

SUNCRUISER



Why SunCruiser?

- Four spacious floorplans
- TrueAir® Maximum Comfort A/C
- Ultraleather™ swivel cab seats
- Available Infotainment Center with Rand McNally RV GPS
- MCD solar/blackout roller shades
- LED ceiling lights
- Corian® countertops
- Generous bedroom and master bath (37F)
- Available stylish Contour windows

SUNCRUISER



Why SunCruiser?

- Four spacious floorplans
- TrueAir® Maximum Comfort A/C
- Ultraleather™ swivel cab seats
- Available Infotainment Center with Rand McNally RV GPS
- MCD solar/blackout roller shades
- LED ceiling lights
- Corian® countertops
- Generous bedroom and master bath (37F)
- Available stylish Contour windows

SUNCRUISER



Click on this icon throughout the brochure to link to more information on the web.



ON THE COVER: 38Q Cardinal Full-Body Paint

38Q Waldorf with Forest Cherry Cabinetry

MORE MOTORHOME THAN EVER

The Itasca SunCruiser® continues to draw rave reviews for delivering diesel-pusher style in the convenience and affordability of a Class A coach. The new 38Q triple-slideout floorplan joins our most exciting and diverse SunCruiser lineup ever. A restyled front cap, full-body paint, and available dual-pane

Contour windows set the stage for a coach filled with luxurious, user-friendly features, including MCD solar/blackout roller shades, Ultraleather™ furniture, and advanced LED lighting. When you want comfort and luxury in a Class A coach, look no further than the Itasca SunCruiser.



RECOGNIZED QUALITY The RV Dealers Association bestows its annual Quality Circle Award based on dealer ratings to manufacturers that provide exceptional products, service and support. Only one manufacturer has received this award for seventeen consecutive years: Winnebago Industries®.



ON THE COVER: 38Q Cardinal Full-Body Paint

38Q Waldorf with Forest Cherry Cabinetry

MORE MOTORHOME THAN EVER

The Itasca SunCruiser® continues to draw rave reviews for delivering diesel-pusher style in the convenience and affordability of a Class A gas coach. The new 38Q triple-slideout floorplan joins our most exciting and diverse SunCruiser lineup ever. A restyled front cap, full-body paint, and available dual-pane

Contour windows set the stage for a coach filled with luxurious, user-friendly features, including MCD solar/blackout roller shades, Ultraleather™ furniture, and advanced LED lighting. When you want comfort and luxury in a Class A coach, look no further than the Itasca SunCruiser.



RECOGNIZED QUALITY The RV Dealers Association bestows its annual Quality Circle Award based on dealer ratings to manufacturers that provide exceptional products, service and support. Only one manufacturer has received this award for seventeen consecutive years: Winnebago Industries®.

BEST IN CLASS

See how Winnebago Industries takes motorhome design and function to the next level, and why we've earned the right to be called the Most Recognized Name in Motorhomes.®



Click on this icon throughout the brochure to link to more information on the web.



The **BIG Shower** lives up to its name with a wide entrance and plenty of elbow room (37F).



The **OnePlace® Systems Center** lets you monitor and control key systems from one convenient location.



Choose a set of two plush **Ottomans** for extra storage and seating or to rest your legs while relaxing on your sofa (38Q).



With a simple switch you can quickly convert your **Rest Easy® Extendable Sectional Sofa** into a comfortable, contoured bed.



Adjust your preferred light and privacy settings with the smooth-operating **MCD Solar/Blackout Roller Shades**.



Full-Extension Drawer Slides make it easy to open drawers wide and maximize their storage space.



The available **Infotainment Center with Rand McNally RV GPS** offers turn-by-turn voice guidance and more.

BEST IN CLASS

See how Winnebago Industries takes motorhome design and function to the next level, and why we've earned the right to be called the Most Recognized Name in Motorhomes.®



Click on this icon throughout the brochure to link to more information on the web.



The **BIG Shower** lives up to its name with a wide entrance and plenty of elbow room (37F).



The **OnePlace® Systems Center** lets you monitor and control key systems from one convenient location.



Choose a set of two plush **Ottomans** for extra storage and seating or to rest your legs while relaxing on your sofa (38Q).



With a simple switch you can quickly convert your **Rest Easy® Extendable Sectional Sofa** into a comfortable, contoured bed.



Adjust your preferred light and privacy settings with the smooth-operating **MCD Solar/Blackout Roller Shades**.



Full-Extension Drawer Slides make it easy to open drawers wide and maximize their storage space.



The available **Infotainment Center with Rand McNally RV GPS** offers turn-by-turn voice guidance and more.



38Q Waldorf with Forest Cherry Cabinetry

Style and comfort meet in this luxurious lounge, complete with a Rest Easy® extendable sectional sofa (38Q), a Euro recliner (37F, 38Q) with a hoop base allowing the recliner to be moved when the coach is parked, and an impressive entertainment center that includes a 46" HDTV (38Q). You'll appreciate the MCD solar/blackout roller shades, the Blu-Ray™ Home Theater System, and the comfortable sofa/bed (32H) —perfect for everything from a mid-day nap to a late night movie. The available Contour windows offer an even more attractive look and reduce wind noise.



Euro Recliner



Rest Easy Extendable Sectional Sofa with Ottomans (38Q)



Rest Easy Extendable Sectional Sofa Extended (38Q)



38Q Waldorf with Forest Cherry Cabinetry

Style and comfort meet in this luxurious lounge, complete with a Rest Easy® extendable sectional sofa (38Q), a Euro recliner (37F, 38Q) with a hoop base allowing the recliner to be moved when the coach is parked, and an impressive entertainment center that includes a 46" HDTV (38Q). You'll appreciate the MCD solar/blackout roller shades, the Blu-Ray™ Home Theater System, and the comfortable sofa/bed (32H) —perfect for everything from a mid-day nap to a late night movie. The available Contour windows offer an even more attractive look and reduce wind noise.



Euro Recliner



Rest Easy Extendable Sectional Sofa with Ottomans (38Q)



Rest Easy Extendable Sectional Sofa Extended (38Q)



38Q Galley

Whether it's a quick meal or a gourmet dinner, this elegant galley is equipped to help with your preparation and presentation. You will love the residential appliances, Corian® countertops, and the abundance of storage. With the stainless steel microwave/convection oven, you can create culinary masterpieces, while the extendable island offers plenty of extra prep space.



Pantry with Pull-Out Shelves



38Q French Door Residential Refrigerator



Glide-Out Freezer Door



Whether it's a quick meal or a gourmet dinner, this elegant galley is equipped to help with your preparation and presentation. You will love the residential appliances, Corian® countertops, and the abundance of storage. With the stainless steel microwave/convection oven, you can create culinary masterpieces, while the extendable island offers plenty of extra prep space.



Whether you want the convenience of a U-shaped dinette (32H) or the sophistication of a dining table/ buffet with a retractable 40" HDTV (37F), the Suncruiser has versatile options for the dining experience you prefer. There is also the popular BenchMark® full comfort dinette with additional storage (35P) and the innovative Glide and Dine™ table that easily extends and glides to the left or right for maximum dining comfort and usability (38Q).



38Q Glide and Dine Dining Table and Chairs



38Q Glide and Dine Table Extended for Four

Whether you want the convenience of a U-shaped dinette (32H) or the sophistication of a dining table/ buffet with a retractable 40" HDTV (37F), the Suncruiser has versatile options for the dining experience you prefer. There is also the popular BenchMark® full comfort dinette with additional storage (35P) and the innovative Glide and Dine™ table that easily extends and glides to the left or right for maximum dining comfort and usability (38Q).



38Q Glide and Dine Dining Table and Chairs



38Q Glide and Dine Table Extended for Four



Whether you're reading a book or watching a movie on the large HDTV, the powered king bed (37F, 38Q) adjusts at the press of a button. Sleep comes easier on the Ideal Rest® Natural Reserve digital comfort control mattress (available in 32H, 35P, standard in 37F, 38Q) with its ability to individually adjust the firmness of each side of the bed. The cotton and bamboo fiber cover with a duo-firmness reversible insert adds to your total comfort. The bedroom includes a dedicated 110-volt outlet connected to a 1,000-watt inverter, allowing for power without the use of a generator when shoreline power is not available.





Whether you're reading a book or watching a movie on the large HDTV, the powered king bed (37F, 38Q) adjusts at the press of a button. Sleep comes easier on the Ideal Rest® Natural Reserve digital comfort control mattress (available in 32H, 35P, standard in 37F, 38Q) with its ability to individually adjust the firmness of each side of the bed. The cotton and bamboo fiber cover with a duo-firmness reversible insert adds to your total comfort. The bedroom includes a dedicated 110-volt outlet connected to a 1,000-watt inverter, allowing for power without the use of a generator when shoreline power is not available.





38Q Bathroom



38Q Vanity



37F BIG Shower

Each bathroom features Corian countertops, a textured glass shower door, and a flexible showerhead. The 32H and 35P feature mid-coach baths, while the 38Q comes with a cross-aisle split bath. The 37F boasts a master bath featuring the BIG Shower as well as a guest bath.

**38Q** Bathroom**38Q** Vanity**37F** BIG Shower

Each bathroom features Corian countertops, a textured glass shower door, and a flexible showerhead. The 32H and 35P feature mid-coach baths, while the 38Q comes with a cross-aisle split bath. The 37F boasts a master bath featuring the BIG Shower as well as a guest bath.



Dash

Life on the road is easier and more comfortable thanks to sideview and rearview cameras incorporated into the touch screen radio and the power Ultraleather cab seats. MCD solar/blackout roller shades keep driving and evenings comfortable, while the dash workstation provides the co-pilot with a convenient work surface.



Cab Seat



Dash Workstation



MCD Solar/Blackout Powered Roller Shades



Dash

Life on the road is easier and more comfortable thanks to sideview and rearview cameras incorporated into the touch screen radio and the power Ultraleather cab seats. MCD solar/blackout roller shades keep driving and evenings comfortable, while the dash workstation provides the co-pilot with a convenient work surface.



Cab Seat



Dash Workstation



MCD Solar/Blackout Powered Roller Shades

For outdoor enjoyment, a powered patio awning and available exterior entertainment center (featuring a 32" HDTV mounted on an adjustable bracket for easy viewing) maximize relaxation in the open air. You'll appreciate the abundant storage that allows you to bring all your gear—both the necessities and the extras. The leveling jacks include 3-position controls, allowing you to level the coach from the cab, service center, or the entrance door. With ergonomic controls and color-coded labels in the service center, you'll be surprised at how quick and easy hookups can be.



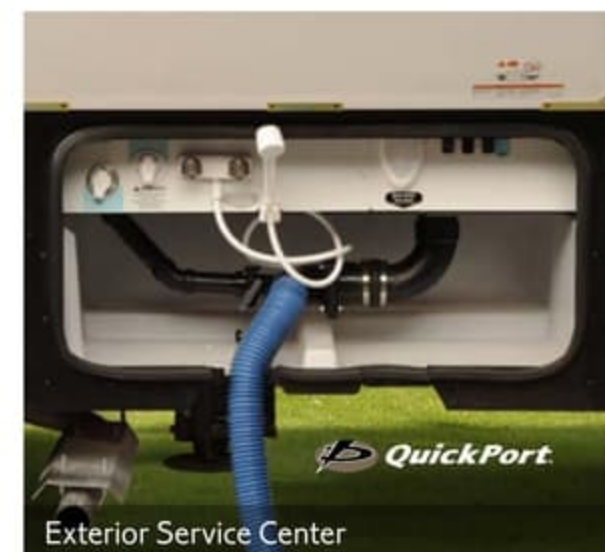
Powered Patio Awning with LED Lighting



Available Exterior Entertainment Center



Stylized Aluminum Wheels



Exterior Service Center

For outdoor enjoyment, a powered patio awning and available exterior entertainment center (featuring a 32" HDTV mounted on an adjustable bracket for easy viewing) maximize relaxation in the open air. You'll appreciate the abundant storage that allows you to bring all your gear—both the necessities and the extras. The leveling jacks include 3-position controls, allowing you to level the coach from the cab, service center, or the entrance door. With ergonomic controls and color-coded labels in the service center, you'll be surprised at how quick and easy hookups can be.



Powered Patio Awning with LED Lighting



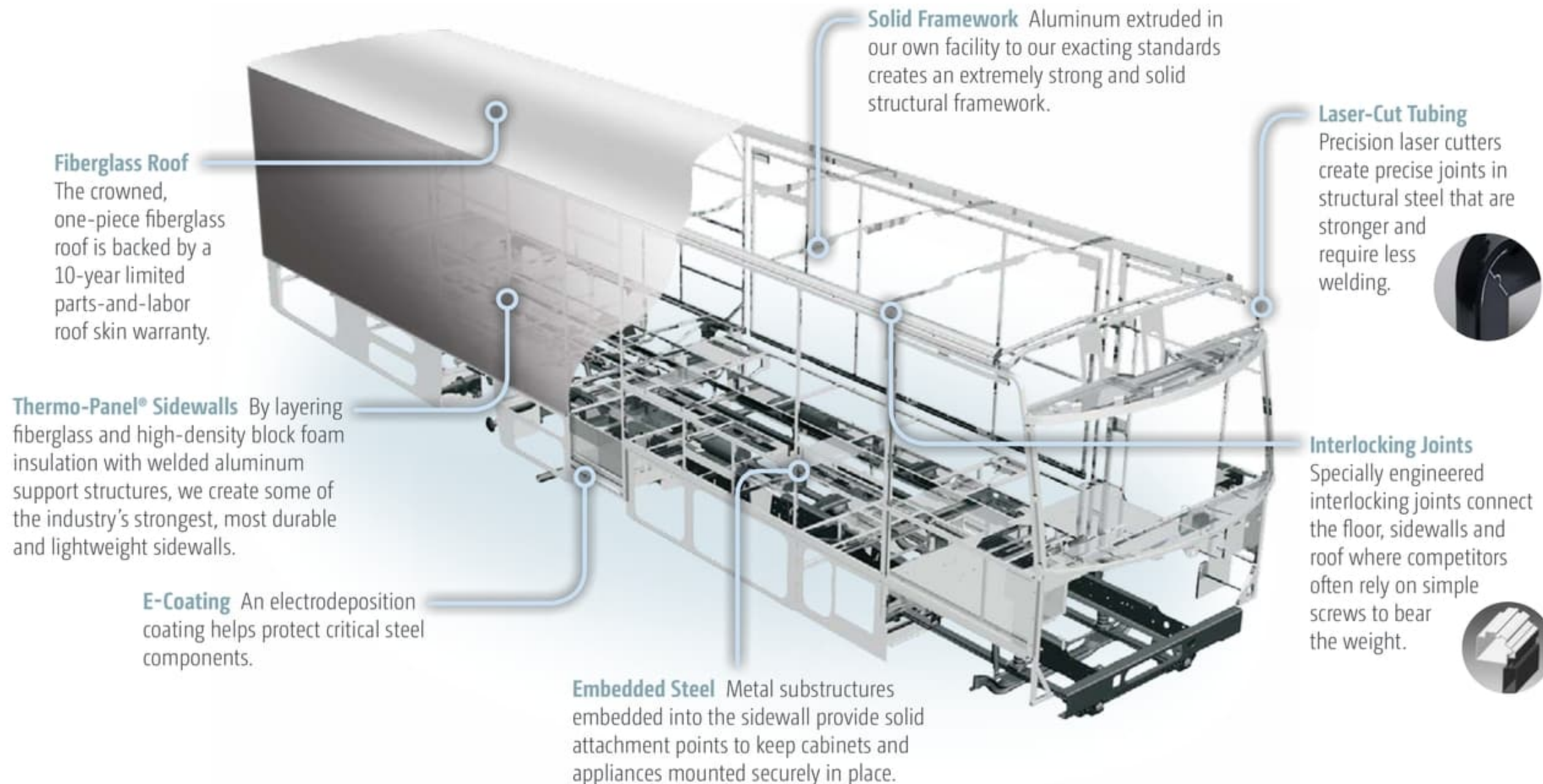
Available Exterior Entertainment Center



Stylized Aluminum Wheels

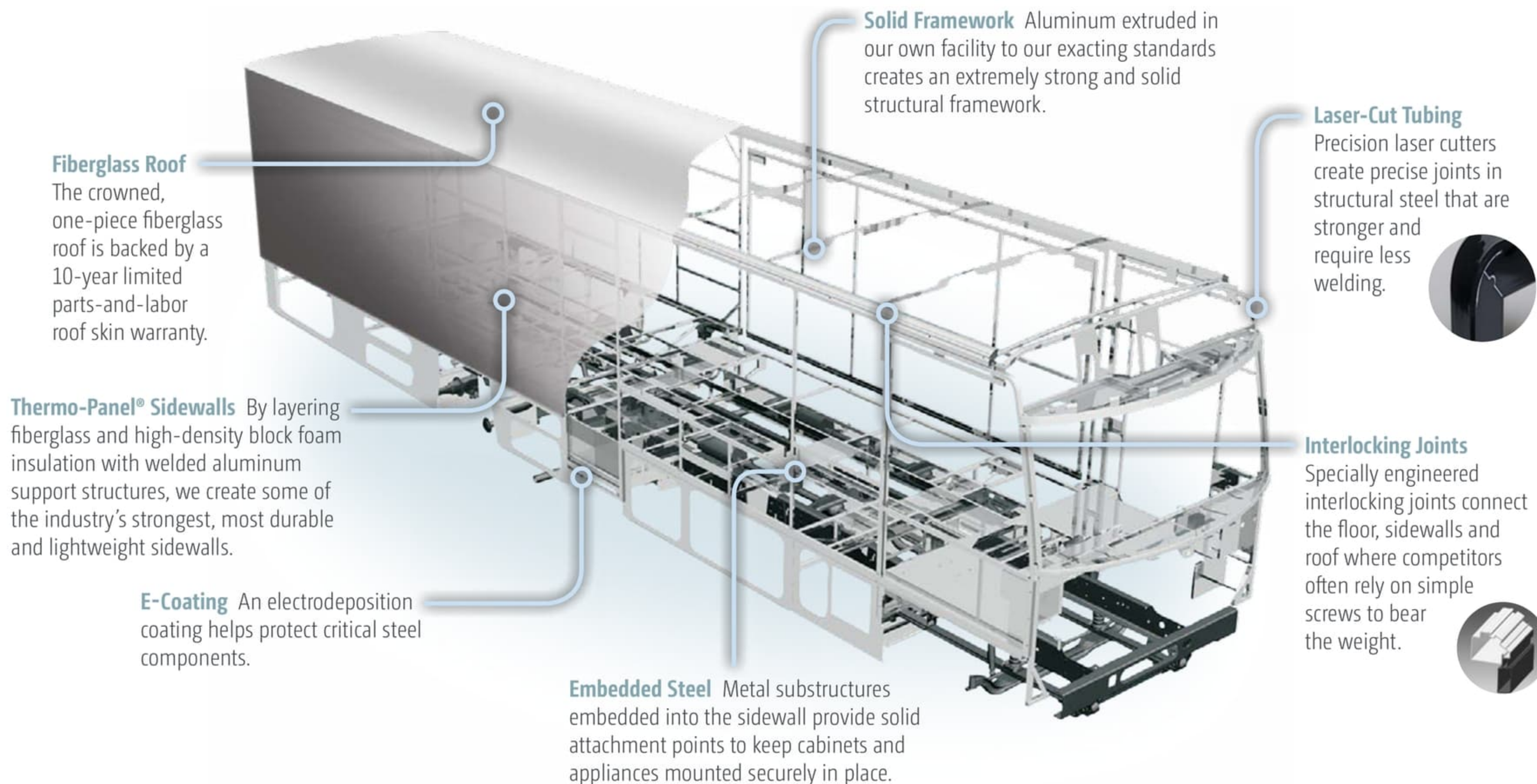


Exterior Service Center



**SUPER
STRUCTURE**
BUILT TO LAST

Every coach—from our smallest Class C to our largest diesel-pusher model—is built to Winnebago Industries'® legendary SuperStructure® construction standards. It's a process developed and refined over more than 50 years of building some of the strongest, most durable coaches in the industry.



**SUPER
STRUCTURE**
BUILT TO LAST

Every coach—from our smallest Class C to our largest diesel-pusher model—is built to Winnebago Industries'® legendary SuperStructure® construction standards. It's a process developed and refined over more than 50 years of building some of the strongest, most durable coaches in the industry.

TESTING Before rolling out of our factories, every coach undergoes an extensive 113-point inspection. Each coach also passes a high-pressure water test that simulates rain at a rate of 50-inches per hour to check for leaks. During the design process, our computer simulations, physical testing center, and rigorous test track ensure each model is built to last.



DETAILS At Winnebago Industries, we treat the features you can't see with the same care as the ones you can. Look in the access panels of some of our competitors' coaches and you'll see loose insulation and wires haphazardly strewn about. Winnebago Industries maintains a clean fit and finish throughout so your coach will last for the long haul.



BUILT IN-HOUSE We extrude our own aluminum. We rotocast our own plastic components. In fact, we manufacture most of our own parts so they are designed to fit the space, rather than fitting the space to an awkward off-the-shelf component size.



**SUPER
STRUCTURE**
BUILT TO LAST

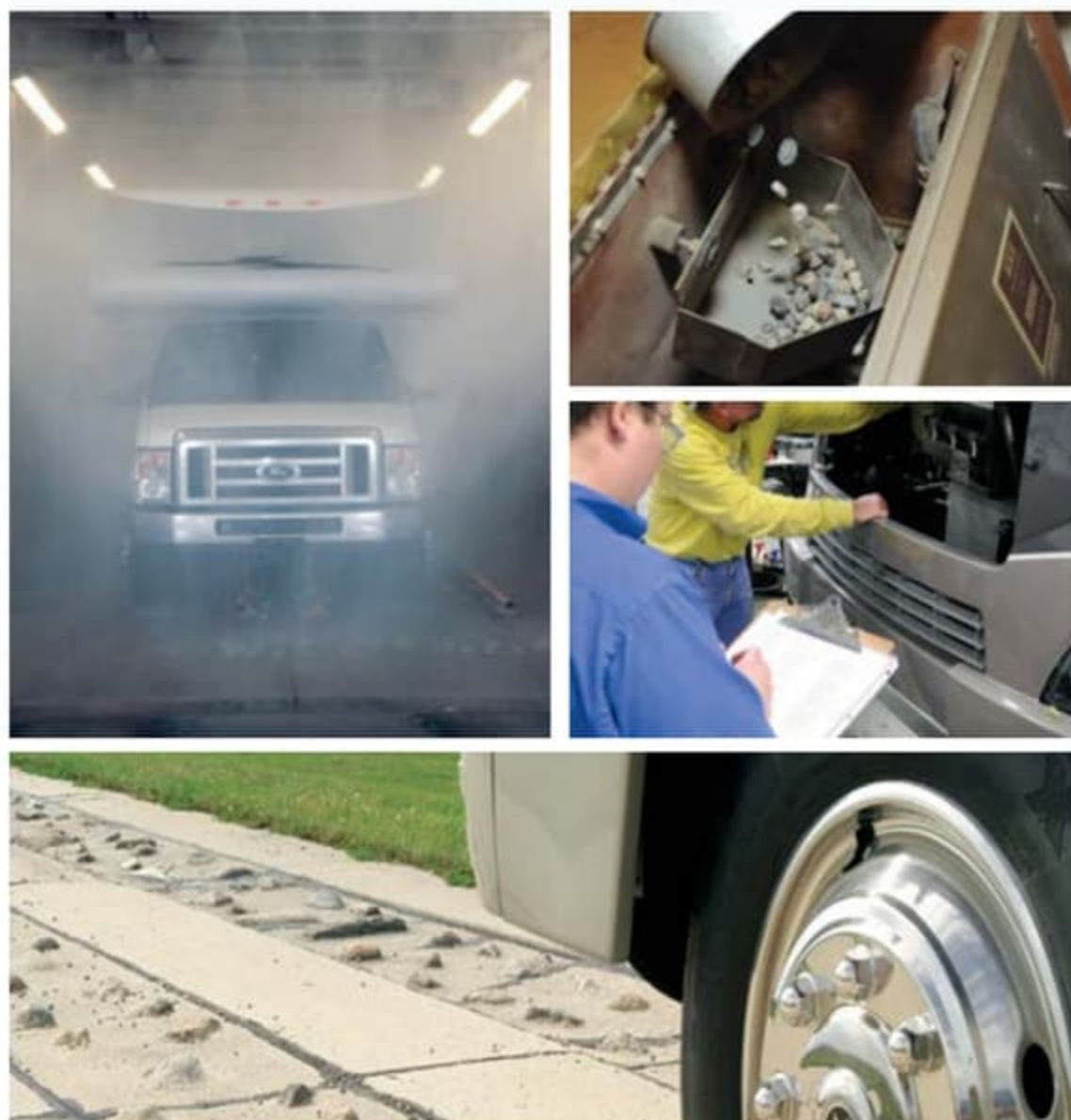
Visit BetterBuiltRVs.com to gain real insight into what goes into a Winnebago Industries motorhome.

TAKE A TOUR We're proud of our processes, state-of-the-art facilities, and the people who make Winnebago Industries number one. We invite you to visit our complex in Forest City, Iowa, for a first-hand look at the dedication and technology behind every motorhome we build.



TESTING

Before rolling out of our factories, every coach undergoes an extensive 113-point inspection. Each coach also passes a high-pressure water test that simulates rain at a rate of 50-inches per hour to check for leaks. During the design process, our computer simulations, physical testing center, and rigorous test track ensure each model is built to last.



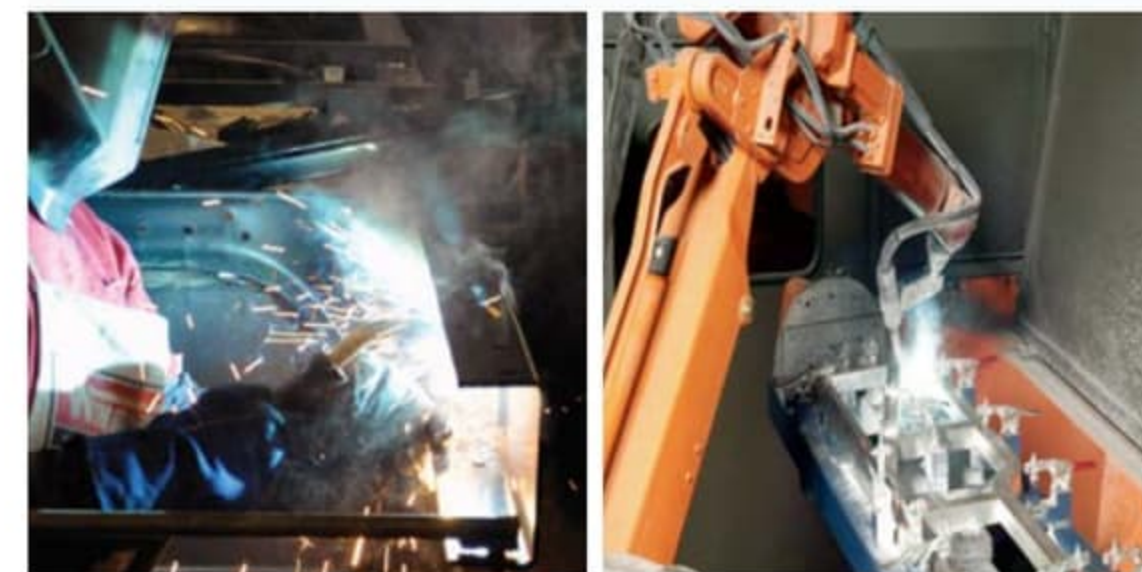
DETAILS

At Winnebago Industries, we treat the features you can't see with the same care as the ones you can. Look in the access panels of some of our competitors' coaches and you'll see loose insulation and wires haphazardly strewn about. Winnebago Industries maintains a clean fit and finish throughout so your coach will last for the long haul.



BUILT IN-HOUSE

We extrude our own aluminum. We rotocast our own plastic components. In fact, we manufacture most of our own parts so they are designed to fit the space, rather than fitting the space to an awkward off-the-shelf component size.



**SUPER
STRUCTURE**
BUILT TO LAST

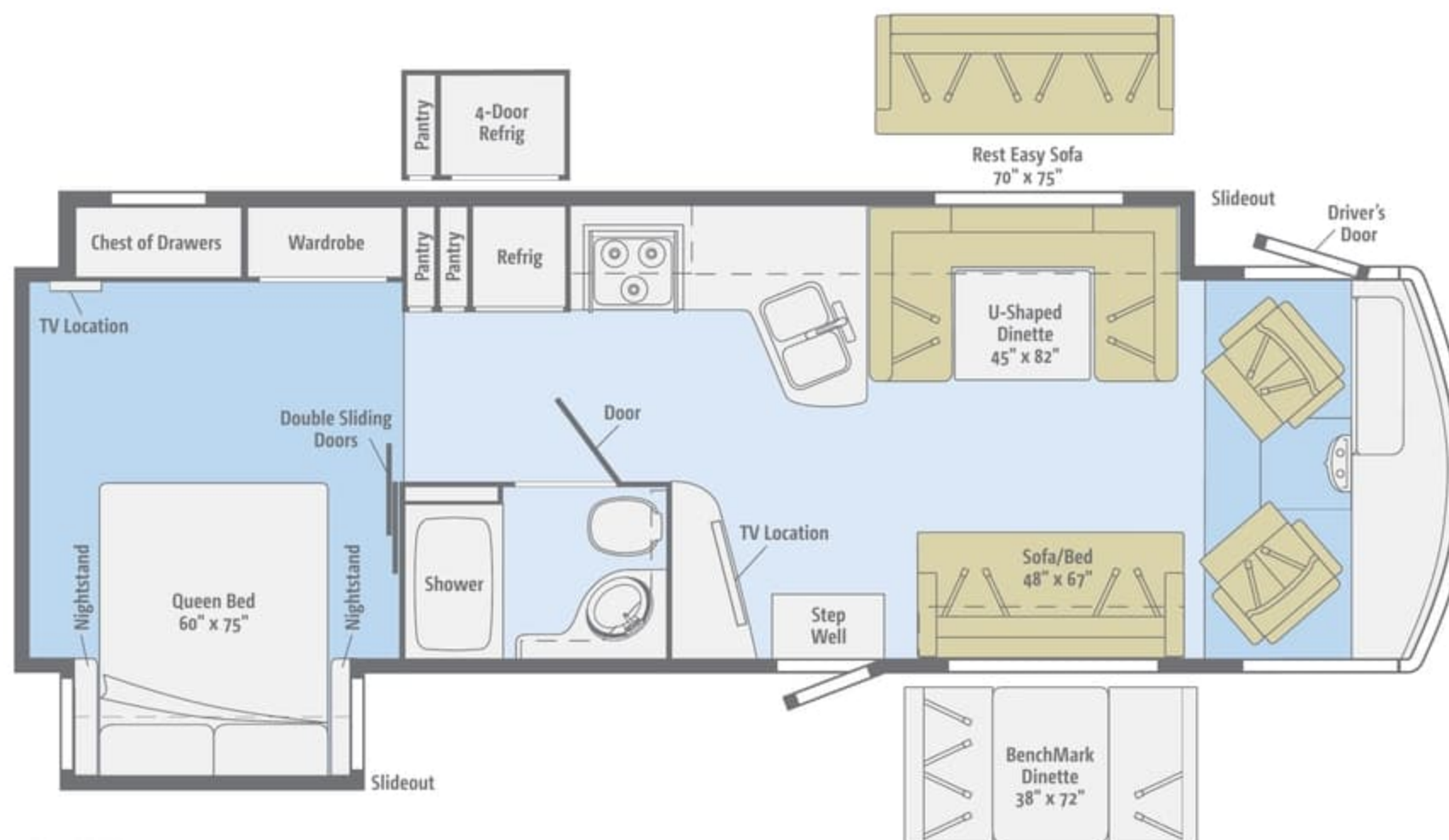
Visit BetterBuiltRVs.com to gain real insight into what goes into a Winnebago Industries motorhome.

TAKE A TOUR

We're proud of our processes, state-of-the-art facilities, and the people who make Winnebago Industries number one. We invite you to visit our complex in Forest City, Iowa, for a first-hand look at the dedication and technology behind every motorhome we build.



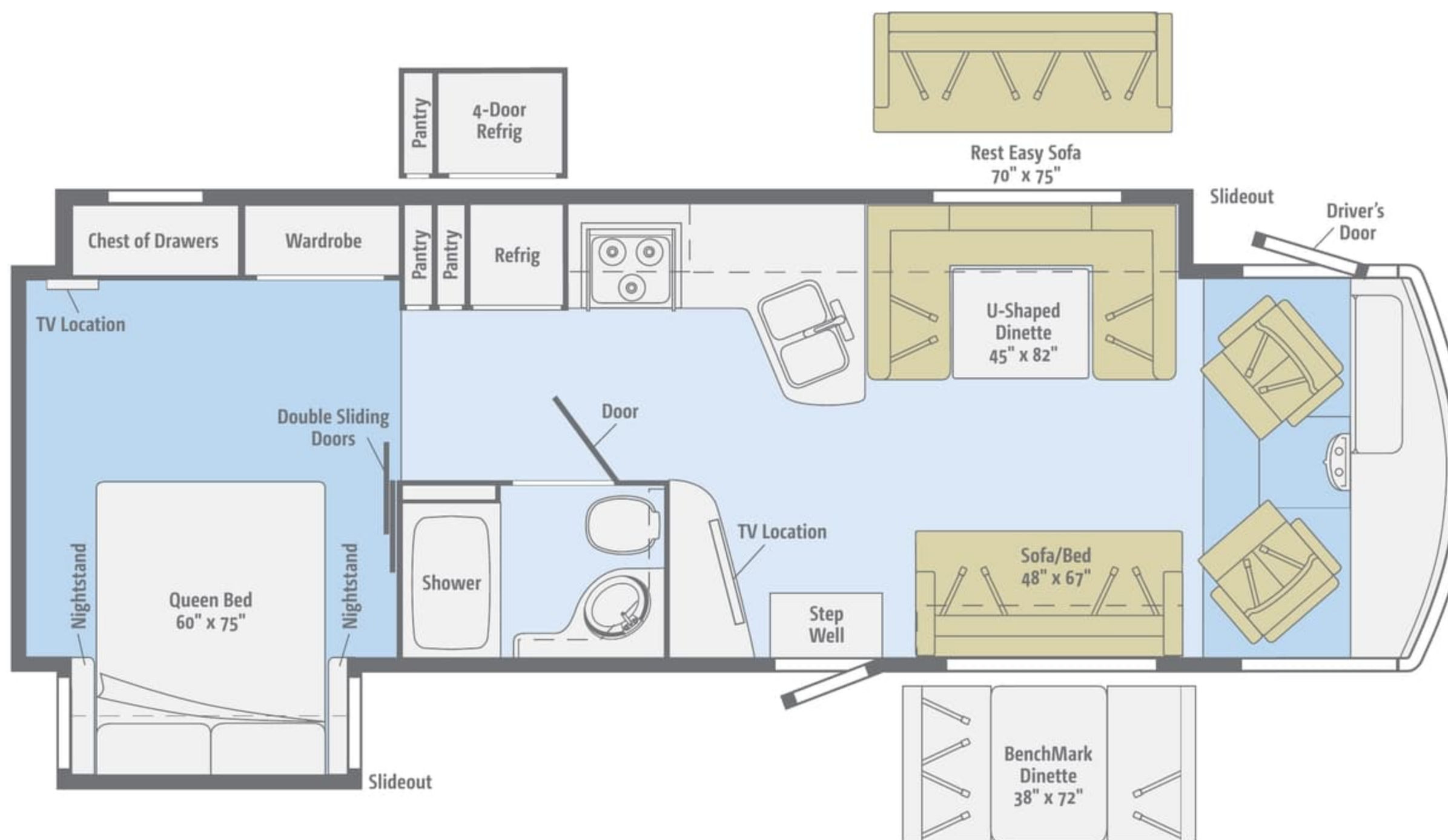
Dimensions shown are for sleeping space only and may vary due to styling differences. Dashed lines denote overhead storage areas. Floorplans and specifications are also available online at Goltasca.com.



32H

Highlights of this dual-slideout coach include a U-shaped dinette, sofa/bed, an open-concept galley, a spacious mid-coach bath, a large wardrobe, and a chest of drawers.

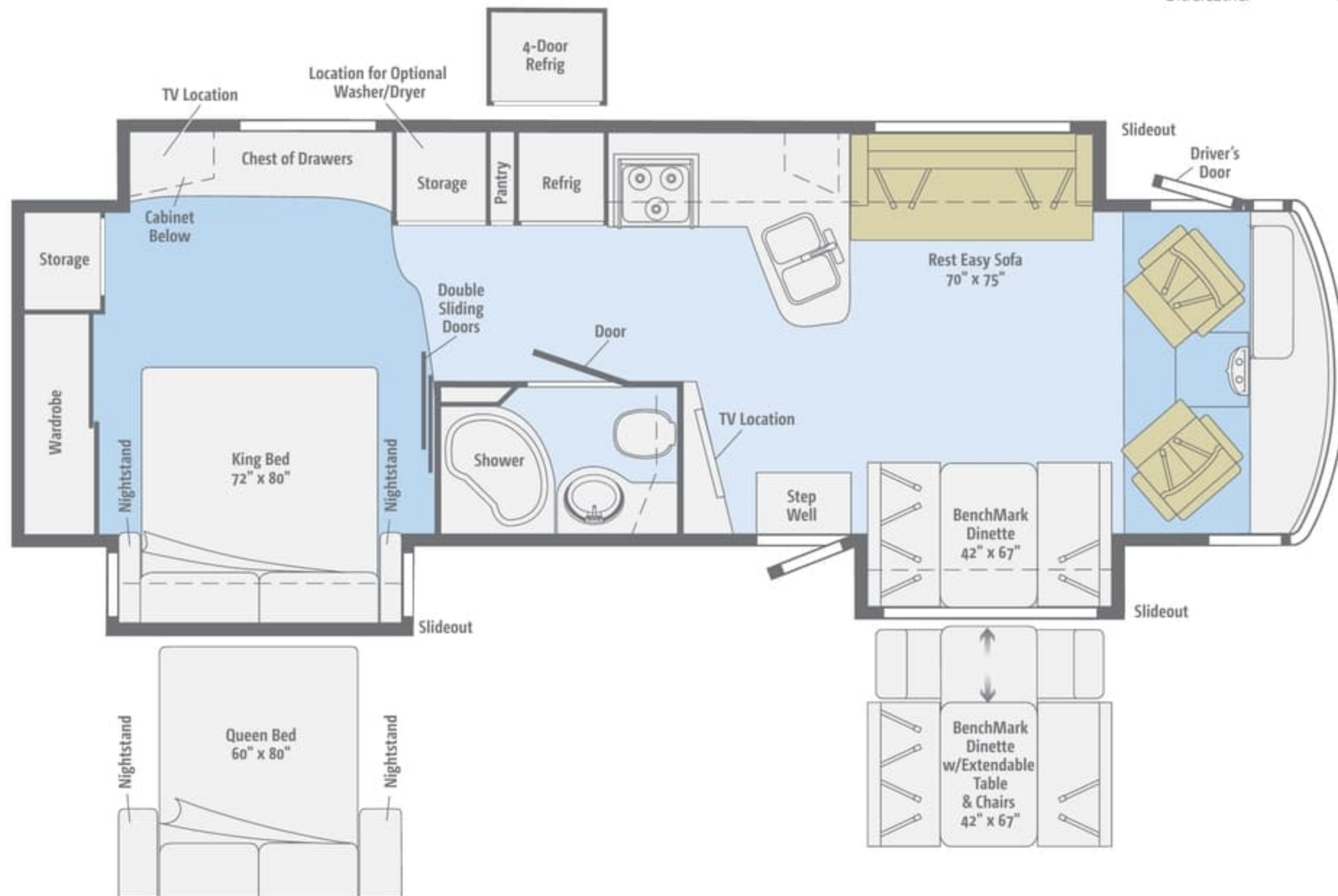
Dimensions shown are for sleeping space only and may vary due to styling differences. Dashed lines denote overhead storage areas. Floorplans and specifications are also available online at Goltasca.com.



32H

Highlights of this dual-slideout coach include a U-shaped dinette, sofa/bed, an open-concept galley, a spacious mid-coach bath, a large wardrobe, and a chest of drawers.

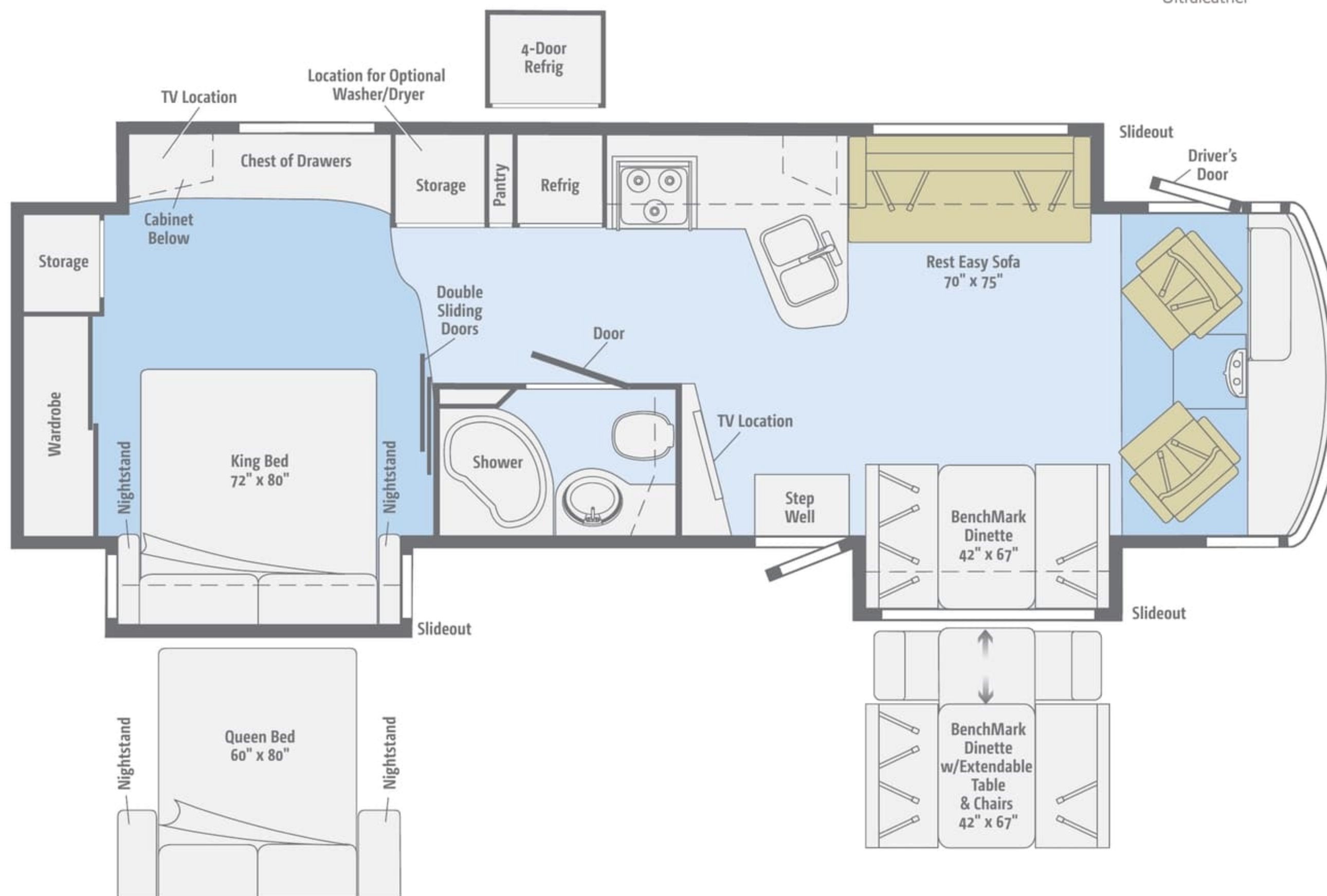
Dimensions shown are for sleeping space only and may vary due to styling differences. Dashed lines denote overhead storage areas. Floorplans and specifications are also available online at Goltasca.com.



35P

With three slideouts, including a full-wall slide, this impressive floorplan features the BenchMark® dinette and a master bedroom with a king bed, large wardrobe, and a chest of drawers.

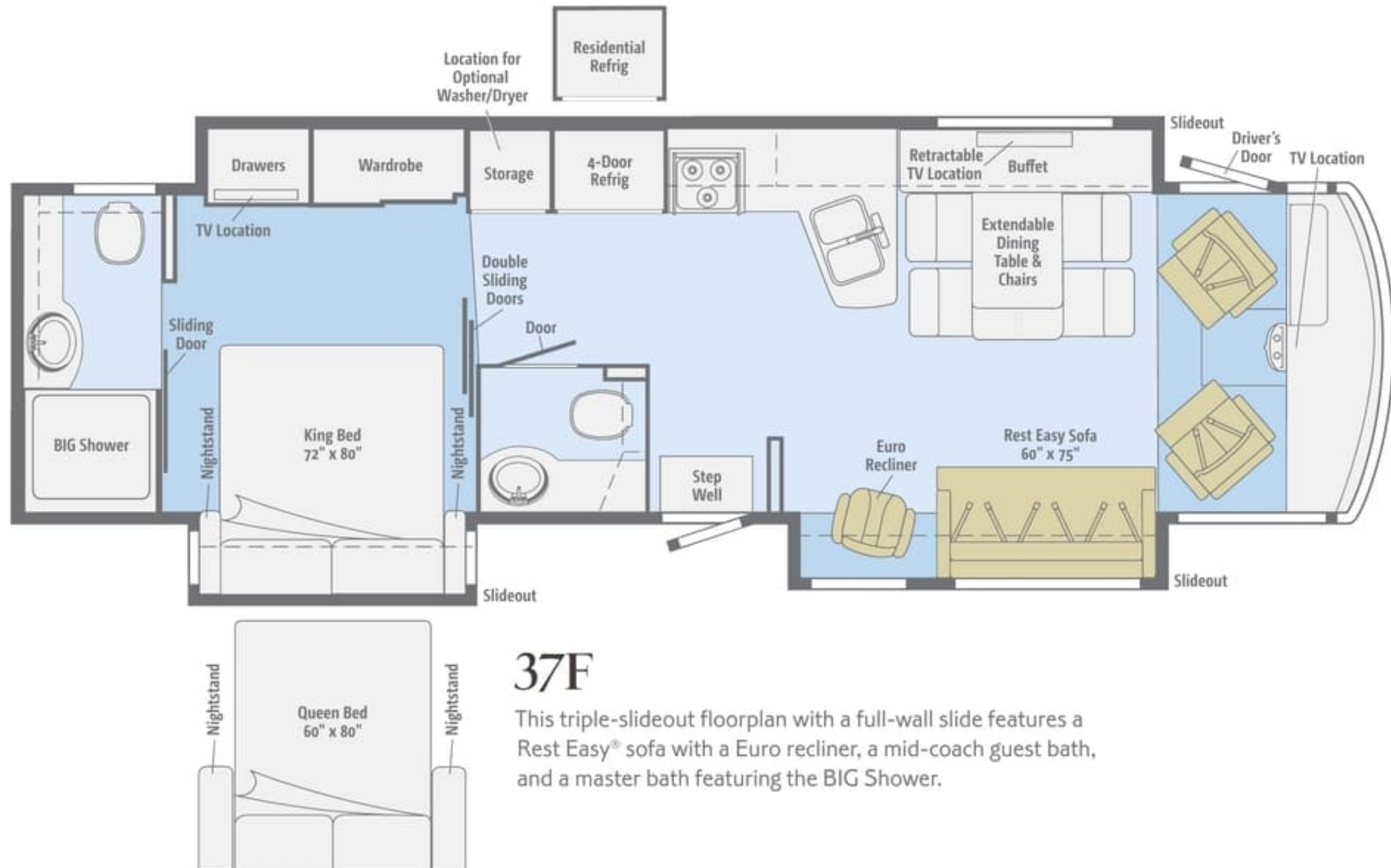
Dimensions shown are for sleeping space only and may vary due to styling differences. Dashed lines denote overhead storage areas. Floorplans and specifications are also available online at Goltasca.com.



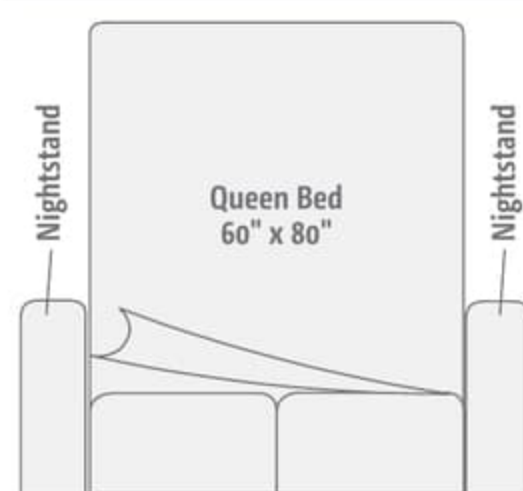
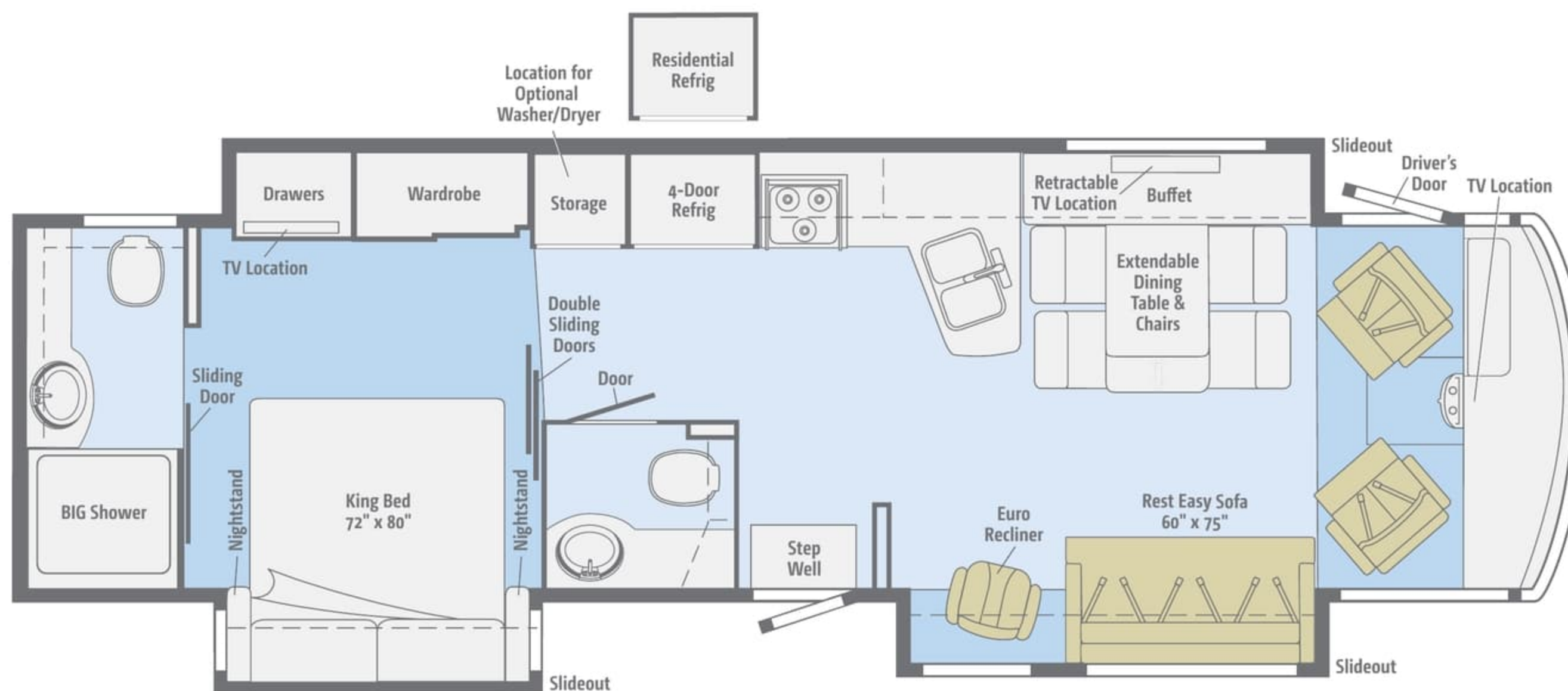
35P

With three slideouts, including a full-wall slide, this impressive floorplan features the BenchMark[®] dinette and a master bedroom with a king bed, large wardrobe, and a chest of drawers.

Dimensions shown are for sleeping space only and may vary due to styling differences. Dashed lines denote overhead storage areas. Floorplans and specifications are also available online at Goltasca.com.



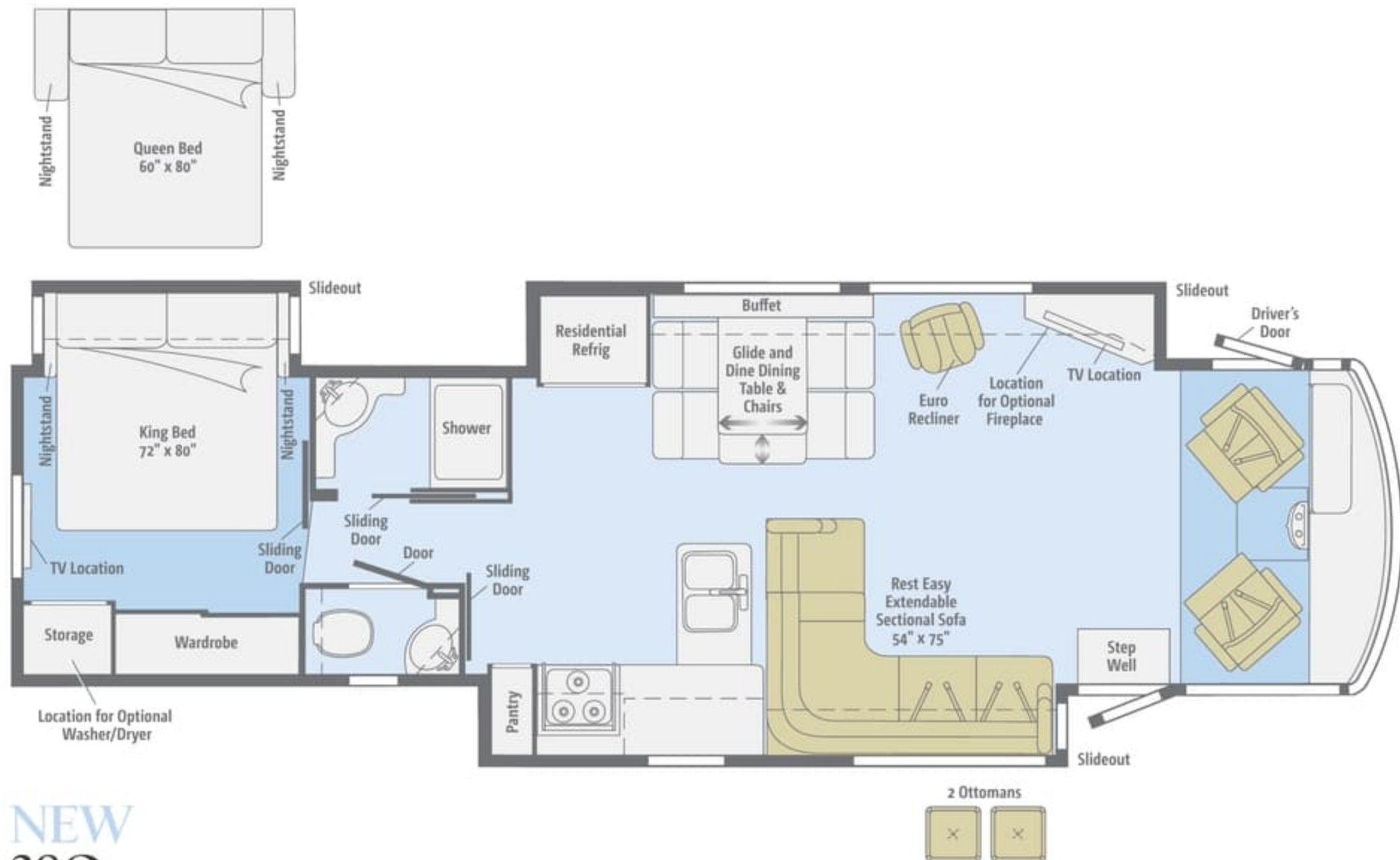
Dimensions shown are for sleeping space only and may vary due to styling differences. Dashed lines denote overhead storage areas. Floorplans and specifications are also available online at Goltasca.com.



37F

This triple-slideout floorplan with a full-wall slide features a Rest Easy® sofa with a Euro recliner, a mid-coach guest bath, and a master bath featuring the BIG Shower.

Dimensions shown are for sleeping space only and may vary due to styling differences. Dashed lines denote overhead storage areas. Floorplans and specifications are also available online at Goltasca.com.



NEW 38Q

Our newest triple-slideout floorplan offers you a spacious lounge area with a Rest Easy® extendable sectional sofa, a cross-aisle split bath, and your choice of a powered king or queen bed.

Dimensions shown are for sleeping space only and may vary due to styling differences. Dashed lines denote overhead storage areas. Floorplans and specifications are also available online at Goltasca.com.



NEW 38Q

Our newest triple-slideout floorplan offers you a spacious lounge area with a Rest Easy® extendable sectional sofa, a cross-aisle split bath, and your choice of a powered king or queen bed.

Choose from three fabric collections and five wood finishes, each with Satin Nickel hardware.

Waldorf



Main



Ultraleather



Accent



Bedsread



Corian Countertop



Wall Board



Carpet



Vinyl Tile



Honey Cherry



Forest Cherry



Coffee-Glazed
Vienna Maple



Coffee-Glazed
Honey Cherry



Coffee-Glazed
Forest Cherry

Winnebago Industries® reserves the right to change décor materials and specifications without notice or obligation.

Choose from three fabric collections and five wood finishes, each with Satin Nickel hardware.

Waldorf



Main



Ultraleather



Accent



Bedspread



Corian Countertop



Wall Board



Carpet



Vinyl Tile



Honey Cherry



Forest Cherry



Coffee-Glazed
Vienna Maple



Coffee-Glazed
Honey Cherry



Coffee-Glazed
Forest Cherry

Winnebago Industries® reserves the right to change décor materials and specifications without notice or obligation.

Choose from three fabric collections and five wood finishes, each with Satin Nickel hardware.

Westcott



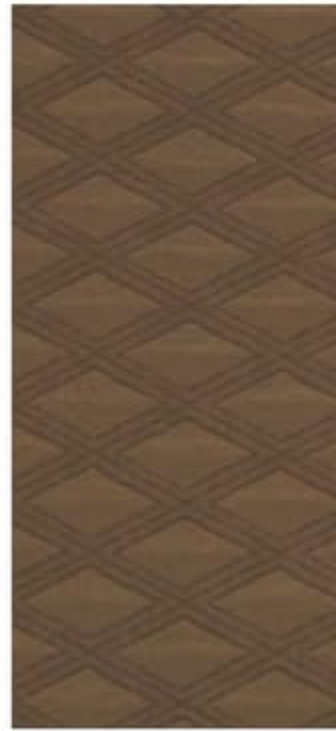
Main



Ultraleather



Accent



Bedspread



Corian Countertop



Wall Board



Carpet



Vinyl Tile



Honey Cherry



Forest Cherry



Coffee-Glazed
Vienna Maple



Coffee-Glazed
Honey Cherry



Coffee-Glazed
Forest Cherry

Winnebago Industries® reserves the right to change décor materials and specifications without notice or obligation.

Choose from three fabric collections and five wood finishes, each with Satin Nickel hardware.

Westcott



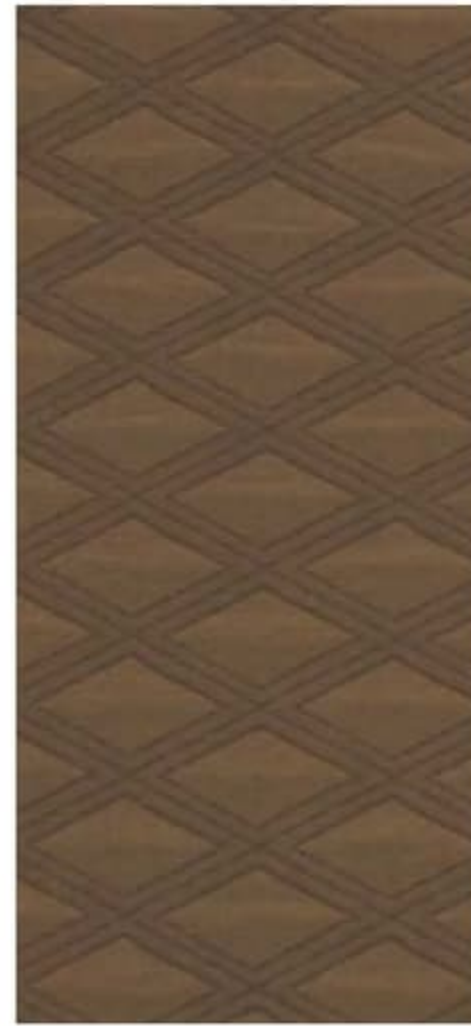
Main



Ultraleather



Accent



Bedspread



Corian Countertop



Wall Board



Carpet



Vinyl Tile



Honey Cherry



Forest Cherry



Coffee-Glazed
Vienna Maple



Coffee-Glazed
Honey Cherry



Coffee-Glazed
Forest Cherry

Winnebago Industries® reserves the right to change décor materials and specifications without notice or obligation.

Choose from three fabric collections and five wood finishes, each with Satin Nickel hardware.

Whitesand



Main



Ultraleather



Accent



Bedspread



Corian Countertop



Wall Board



Carpet



Vinyl Tile



Honey Cherry



Forest Cherry



Coffee-Glazed
Vienna Maple



Coffee-Glazed
Honey Cherry



Coffee-Glazed
Forest Cherry

Winnebago Industries® reserves the right to change décor materials and specifications without notice or obligation.

Choose from three fabric collections and five wood finishes, each with Satin Nickel hardware.

Whitesand



Main



Ultraleather



Accent



Bedspread



Corian Countertop



Wall Board



Carpet



Vinyl Tile



Honey Cherry



Forest Cherry



Coffee-Glazed
Vienna Maple



Coffee-Glazed
Honey Cherry



Coffee-Glazed
Forest Cherry

Winnebago Industries® reserves the right to change décor materials and specifications without notice or obligation.

Choose from four stylish full-body paint selections.



Pewter Pearl
FULL-BODY PAINT



Indigo
FULL-BODY PAINT



Cardinal
FULL-BODY PAINT



Sandstone
FULL-BODY PAINT

Choose from four stylish full-body paint selections.



Pewter Pearl
FULL-BODY PAINT



Indigo
FULL-BODY PAINT



Cardinal
FULL-BODY PAINT



Sandstone
FULL-BODY PAINT

Weights & Measures

Length	33'3"
Exterior Height ¹	12'8"
Exterior Width ²	8'5.5"
Exterior Storage ³ (cu. ft.)	112.3
Awning Length	17'
Interior Height	7'
Interior Width	8'0.5"
Freshwater Tank Capacity ⁴ (gal.)	78
Water Heater Capacity (gal.)	10
Holding Tank Capacity - Black/Gray ⁴ (gal.)	43/47
LP Capacity ⁵ (gal.)	23
Fuel Capacity (gal.)	80
GCWR ⁶ (lbs.)	26,000 ^A
GVWR (lbs.)	22,000 ^A
GAWR - Front (lbs.)	8,000 ^A
GAWR - Rear (lbs.)	15,000 ^A
Wheelbase	220"

32H

33'3"
12'8"
8'5.5"
112.3
17'
7'
8'0.5"
78
10
43/47
23
80
26,000 ^A
22,000 ^A
8,000 ^A
15,000 ^A
220"

35P

35'9"
12'8"
8'5.5"
125.5
17'
7'
8'0.5"
78
10
43/57
28
80
26,000 ^A /30,000 ^B
22,000 ^A /24,000 ^B
8,000 ^A /9,000 ^B
15,000 ^A /15,500 ^B
228"

37F

37'9"
12'8"
8'5.5"
121.7
18'
7'
8'0.5"
78
10
52/71
28
80
30,000 ^B
24,000 ^B
9,000 ^B
15,500 ^B
248"

38Q

39'1"
12'8"
8'5.5"
121.9
14'
7'
8'0.5"
75
10
75/59
28
80
30,000 ^C
26,000 ^C
9,000 ^C
17,500 ^C
248"

A Ford F53 22,000-lb. Chassis w/22.5" tires B Ford F53 24,000-lb. Chassis w/22.5" tires C Ford F53 26,000-lb. Chassis w/22.5" tires

CHASSIS

Ford® F53 22,000-lb. Chassis 362-hp 6.8L V10 SEFI Triton® engine, TorqShift™ 5-speed automatic overdrive transmission w/tow/haul, Hydro-Max brakes w/ABS, 175-amp. alternator (32H, 35P)

Ford F53 24,000-lb. Chassis (37F)

Ford F53 26,000-lb. Chassis (38Q)

Trailer Hitch 5,000-lb. drawbar/500-lb. maximum vertical tongue weight w/7-pin connector

Stylized aluminum wheels

Hydraulic leveling jacks w/3-position controls

Optional Equipment

Ford F53 24,000-lb. Chassis (35P)



Ford F53 Chassis

Cab Conveniences

Radio/Rearview Monitor System 6" LCD color touch screen, remote, iPod®/MP3 input, rear color camera

Chassis/house battery radio power switch

Cab seats adjustable armrests, lumbar support, multi-adjustable recline and swivel/slide

6-way power-assist driver seat

3-point seat belts

Defroster fans

Cab sound control package

Cruise control

12-volt powerpoints

Map lights

Power steering w/tilt wheel

Dash workstation

C.B. wire prep kit

Power mirrors w/defrost and sideview cameras

MCD solar/blackout powered front shade, privacy curtain for driver and passenger windows

Sideview video color camera system

Light-filtering roller shades for driver and passenger windows

Optional Equipment

Infotainment Center w/Rand McNally RV GPS 6" touch screen color monitor w/split screen function, Rand McNally RV GPS safe & easy routing, amenities & tools, trips & content, turn-by-turn voice guidance, AM/FM radio w/CD/DVD player, handheld remote, SiriusXM™ (subscription not included) compass, outside temperature, iPod/iPhone® audio integration, Bluetooth™, color rearview camera

Passenger seat w/footrest (35P, 37F, 38Q)

Interior

Dining table/buffet/chairs w/retractable 40" HDTV (37F)

32" HDTV (32H)

40" HDTV (35P)

46" HDTV (38Q)

Digital HDTV amplified antenna system

Blu-Ray™ Home Theater Sound System amplifier, CD/DVD player, iPhone/iPod dock w/video, receiver, 5 speakers, and subwoofer

Weights & Measures

Length	33'3"
Exterior Height ¹	12'8"
Exterior Width ²	8'5.5"
Exterior Storage ³ (cu. ft.)	112.3
Awning Length	17'
Interior Height	7'
Interior Width	8'0.5"
Freshwater Tank Capacity ⁴ (gal.)	78
Water Heater Capacity (gal.)	10
Holding Tank Capacity - Black/Gray ⁴ (gal.)	43/47
LP Capacity ⁵ (gal.)	23
Fuel Capacity (gal.)	80
GCWR ⁶ (lbs.)	26,000 ^A
GVWR (lbs.)	22,000 ^A
GAWR - Front (lbs.)	8,000 ^A
GAWR - Rear (lbs.)	15,000 ^A
Wheelbase	220"

32H

33'3"
12'8"
8'5.5"
112.3
17'
7'
8'0.5"
78
10
43/47
23
80
26,000 ^A
22,000 ^A
8,000 ^A
15,000 ^A
220"

35P

35'9"
12'8"
8'5.5"
125.5
17'
7'
8'0.5"
78
10
43/57
28
80
26,000 ^A /30,000 ^B
22,000 ^A /24,000 ^B
8,000 ^A /9,000 ^B
15,000 ^A /15,500 ^B
228"

37F

37'9"
12'8"
8'5.5"
121.7
18'
7'
8'0.5"
78
10
52/71
28
80
30,000 ^B
24,000 ^B
9,000 ^B
15,500 ^B
248"

38Q

39'1"
12'8"
8'5.5"
121.9
14'
7'
8'0.5"
75
10
75/59
28
80
30,000 ^C
26,000 ^C
9,000 ^C
17,500 ^C
248"

A Ford F53 22,000-lb. Chassis w/22.5" tires B Ford F53 24,000-lb. Chassis w/22.5" tires C Ford F53 26,000-lb. Chassis w/22.5" tires

CHASSIS

Ford® F53 22,000-lb. Chassis 362-hp 6.8L V10 SEFI Triton® engine, TorqShift™ 5-speed automatic overdrive transmission w/tow/haul, Hydro-Max brakes w/ABS, 175-amp. alternator (32H, 35P)

Ford F53 24,000-lb. Chassis (37F)

Ford F53 26,000-lb. Chassis (38Q)

Trailer Hitch⁶ 5,000-lb. drawbar/500-lb. maximum vertical tongue weight w/7-pin connector

Stylized aluminum wheels

Hydraulic leveling jacks w/3-position controls

Optional Equipment

Ford F53 24,000-lb. Chassis (35P)



Ford F53 Chassis

Cab Conveniences

Radio/Rearview Monitor System 6" LCD color touch screen, remote, iPod®/MP3 input, rear color camera

Chassis/house battery radio power switch

Cab seats adjustable armrests, lumbar support, multi-adjustable recline and swivel/slide

6-way power-assist driver seat

3-point seat belts

Defroster fans

Cab sound control package

Cruise control

12-volt powerpoints

Map lights

Power steering w/tilt wheel

Dash workstation

C.B. wire prep kit

Power mirrors w/defrost and sideview cameras

MCD solar/blackout powered front shade, privacy curtain for driver and passenger windows

Sideview video color camera system

Light-filtering roller shades for driver and passenger windows

Optional Equipment

Infotainment Center w/Rand McNally RV GPS 6" touch screen color monitor w/split screen function, Rand McNally RV GPS safe & easy routing, amenities & tools, trips & content, turn-by-turn voice guidance, AM/FM radio w/CD/DVD player, handheld remote, SiriusXM™ (subscription not included) compass, outside temperature, iPod/iPhone® audio integration, Bluetooth™ color rearview camera

Passenger seat w/footrest (35P, 37F, 38Q)

Interior

Dining table/buffet/chairs w/retractable 40" HDTV (37F)

32" HDTV (32H)

40" HDTV (35P)

46" HDTV (38Q)

Digital HDTV amplified antenna system

Blu-Ray™ Home Theater Sound System amplifier, CD/DVD player, iPhone/iPod dock w/video, receiver, 5 speakers, and subwoofer

OnePlace® systems center

Satellite system ready, including bedroom TV

MCD solar/blackout roller shades (MCD blackout roller shade galley 38Q)

Tinted, dual-glazed, thermo-insulated windows

LED ceiling and accent lighting

Soft vinyl ceilings

Key-activated slideroom master lock switch

HDMI 4x4 Matrix central video selection system

Powered ventilator fan (galley)

Powered roof vent (bath)

Washer/dryer prep (35P, 37F, 38Q)

Optional Equipment

Winegard® in-motion TV antenna system

Winegard Trav'ler® automatic HDTV antenna system

Stackable washer/dryer (35P, 37F, 38Q)

Vinyl tile throughout (slideouts and cab are carpeted)

Contour tinted, dual-glazed, thermo-insulated windows

Electric fireplace (38Q)

Galley

Corian® solid-surface countertop, flip-up extension, and backsplash

Microwave/convection oven w/range fan

3-burner range top w/storage below

Corian sink and range covers

2-door refrigerator/freezer (32H, 35P)

4-door refrigerator/freezer w/icemaker (37F)

French door residential refrigerator, counter-depth, stainless steel, interior water dispenser, icemaker and glide-out bottom drawer freezer (38Q)

Cold water filtration system

Optional Equipment

3-burner range w/oven

4-door refrigerator/freezer w/icemaker (32H, 35P)

French door residential refrigerator, counter-depth, stainless steel, interior water dispenser, icemaker and glide-out bottom drawer freezer (37F) (also includes four AGM batteries)

Bath

Textured glass shower door

Flexible showerhead

Corian countertop

Skylight (32H, 35P)

Water pump switch(es)

Bedroom

Powered king bed w/Ideal Rest® Natural Reserve digital comfort control mattress w/remotes (37F, 38Q)

King bed w/innerspring mattress and storage below (35P)

Queen bed w/innerspring mattress and storage below (32H)

24" HDTV (32H)

28" HDTV (37F)

32" HDTV (35P, 38Q)

Bedsread, pillow shams, and pillows

Ceiling fan

Optional Equipment

Queen Ideal Rest Natural Reserve digital comfort control mattress w/remotes (32H, 35P)

King Ideal Rest® Natural Reserve digital comfort control mattress w/remotes (35P)

Powered queen bed w/Ideal Rest Natural Reserve digital comfort control mattress w/remotes and storage below (37F, 38Q)

Queen bed w/innerspring mattress and storage below (35P)

Exterior

Driver's side service light

TriMark® KeyOne™ lock system

Lower front protective mask

Porch light

Automatic entrance steps

Powered entrance awning (38Q)

Powered patio awning w/LED lighting, metal wrap and WeatherMAX™ fabric

Ladder

Front and rear mud flaps

Lighted storage compartments (in select compartments)

Optional Equipment

Exterior Entertainment Center 32" HDTV mounted to adjustable bracket, stereo w/remote

Heating & Cooling System

35,000 BTU low-profile furnace (32H)

40,000 BTU low-profile furnace (35P, 37F, 38Q)

TrueAir® Maximum Comfort A/C two 13,500 BTU, low-profile roof air conditioners w/heat pumps

Electrical System

AC/DC distribution system

55-amp. converter/charger

Service Center cable TV input, 50-amp. power cord, QuickPort® service connection hatch, portable satellite dish hookup

Cummins Onan® Energy Command™ automatic generator start system

Exterior AC duplex receptacle

Exterior antenna jack

5,500-watt Cummins Onan Marquis Gold™ generator

1,000-watt inverter w/remote panel (32H, 35P)

2,000-watt inverter/charger (37F, 38Q)

PowerLine® Energy Management System

Auxiliary start circuit

Two deep-cycle Group 31 batteries (NA 38Q)

Four deep-cycle Marine/RV batteries (38Q)

Battery disconnect systems (coach and chassis)

Automatic dual-battery charge control

Generator/shoreline automatic changeover switch

Optional Equipment

100-watt solar panel battery charger

Plumbing System

LPG accessory connection (patio area)

Service Center QuickPort service connection hatch, exterior wash station w/pump switch, pressurized city water hookup w/diverter valve, drainage valves, 10' sewer hose, black tank flushing system

Permanent-mount LP tank w/gauge

TrueLevel™ holding-tank monitoring system

On-demand water pump

Heated holding tank compartment

Winterization Package water heater bypass valve and siphon tube

10-gallon water heater, 110 V/LP gas w/motoraid and auxiliary auto heater

Gravity water tank fill w/lockable door

Safety

Child seat tether anchor (dinette) (NA U-Shaped dinette)

LP, smoke and carbon monoxide detectors

10 BC fire extinguisher

Ground fault interrupter

Fog lamps

High-mount brake lamps

Warranty⁷

12-month/15,000-mile basic limited warranty⁸

36-month/36,000-mile limited warranty on structure⁸

10-year limited parts-and-labor warranty on roof skin⁸

1 The height of each model is measured to the top of the tallest standard feature and is based on the curb weight of a typically equipped unit. The actual height of your vehicle may vary by several inches depending on chassis or equipment variations. Please contact your dealer for further information.

2 Floorplans feature a wide-body design – over 96" in making your purchase decision, you should be aware that some states restrict access on some or all state roads to 96" in body width. Before making your purchase decision, you should confirm the road usage laws in the states of interest to you.

3 The load capacity of your motorhome is designated by weight, not by volume, so you cannot necessarily use all available space when loading your motorhome.

4 Capacities are based on measurements prior to tank installation. Slight capacity variations can result due to installation applications.

5 Capacities shown are tank manufacturer's listed water capacity (W.C.). Actual filled LP capacity is 80% of listing due to overfilling prevention device on tank.

6 Actual towing capacity is dependent on your particular loading and towing circumstances, which includes the GVWR, GAWR, and GCWR as well as adequate trailer brakes. Please refer to the Operator's Manual of your vehicle for further towing information.

7 See separate chassis warranty.

8 See your dealer for complete warranty information.

NA Not Available

Not all items available in combination. See dealer for details.

Winnebago Industries® continuing program of product improvement makes specifications, equipment, model availability, and prices subject to change without notice. Published content reflects the most current product information at time of printing. Please consult your dealer for individual vehicle features and specifications.

OnePlace® systems center**Satellite system ready, including bedroom TV****MCD solar/blackout roller shades** (MCD blackout roller shade galley 38Q)**Tinted, dual-glazed, thermo-insulated windows****LED ceiling and accent lighting****Soft vinyl ceilings****Key-activated slideroom master lock switch****HDMI 4x4 Matrix central video selection system****Powered ventilator fan** (galley)**Powered roof vent** (bath)**Washer/dryer prep** (35P, 37F, 38Q)*Optional Equipment***Winegard® in-motion TV antenna system****Winegard Trav'ler® automatic HDTV antenna system****Stackable washer/dryer** (35P, 37F, 38Q)**Vinyl tile throughout** (slideouts and cab are carpeted)**Contour tinted, dual-glazed, thermo-insulated windows****Electric fireplace** (38Q)**Galley****Corian® solid-surface countertop, flip-up extension, and backsplash****Microwave/convection oven w/range fan****3-burner range top w/storage below****Corian sink and range covers****2-door refrigerator/freezer** (32H, 35P)**4-door refrigerator/freezer w/icemaker** (37F)**French door residential refrigerator, counter-depth, stainless steel, interior water dispenser, icemaker and glide-out bottom drawer freezer** (38Q)**Cold water filtration system***Optional Equipment***3-burner range w/oven****4-door refrigerator/freezer w/icemaker** (32H, 35P)**French door residential refrigerator, counter-depth, stainless steel, interior water dispenser, icemaker and glide-out bottom drawer freezer** (37F) (also includes four AGM batteries)**Bath****Textured glass shower door****Flexible showerhead****Corian countertop****Skylight** (32H, 35P)**Water pump switch(es)****Bedroom****Powered king bed w/Ideal Rest® Natural Reserve digital comfort control mattress w/remotes** (37F, 38Q)**King bed w/innerspring mattress and storage below** (35P)**Queen bed w/innerspring mattress and storage below** (32H)**24" HDTV** (32H)**28" HDTV** (37F)**32" HDTV** (35P, 38Q)**Bedsread, pillow shams, and pillows****Ceiling fan***Optional Equipment***Queen Ideal Rest Natural Reserve digital comfort control mattress w/remotes** (32H, 35P)**King Ideal Rest® Natural Reserve digital comfort control mattress w/remotes** (35P)**Powered queen bed w/Ideal Rest Natural Reserve digital comfort control mattress w/remotes and storage below** (37F, 38Q)**Queen bed w/innerspring mattress and storage below** (35P)**Exterior****Driver's side service light****TriMark® KeyOne™ lock system****Lower front protective mask****Porch light****Automatic entrance steps****Powered entrance awning** (38Q)**Powered patio awning w/LED lighting, metal wrap and WeatherMAX™ fabric****Ladder****Front and rear mud flaps****Lighted storage compartments** (in select compartments)*Optional Equipment***Exterior Entertainment Center 32" HDTV** mounted to adjustable bracket, stereo w/remote**Heating & Cooling System****35,000 BTU low-profile furnace** (32H)**40,000 BTU low-profile furnace** (35P, 37F, 38Q)**TrueAir® Maximum Comfort A/C** two 13,500 BTU, low-profile roof air conditioners w/heat pumps**Electrical System****AC/DC distribution system****55-amp. converter/charger****Service Center** cable TV input, 50-amp. power cord, QuickPort® service connection hatch, portable satellite dish hookup**Cummins Onan® Energy Command™ automatic generator start system****Exterior AC duplex receptacle****Exterior antenna jack****5,500-watt Cummins Onan Marquis Gold™ generator****1,000-watt inverter w/remote panel** (32H, 35P)**2,000-watt inverter/charger** (37F, 38Q)**PowerLine® Energy Management System****Auxiliary start circuit****Two deep-cycle Group 31 batteries** (NA 38Q)**Four deep-cycle Marine/RV batteries** (38Q)**Battery disconnect systems** (coach and chassis)**Automatic dual-battery charge control****Generator/shoreline automatic changeover switch***Optional Equipment***100-watt solar panel battery charger****Plumbing System****LPG accessory connection** (patio area)**Service Center** QuickPort service connection hatch, exterior wash station w/pump switch, pressurized city water hookup w/diverter valve, drainage valves, 10' sewer hose, black tank flushing system**Permanent-mount LP tank w/gauge****TrueLevel™ holding-tank monitoring system****On-demand water pump****Heated holding tank compartment****Winterization Package** water heater bypass valve and siphon tube**10-gallon water heater, 110 V/LP gas w/motoraid and auxiliary auto heater****Gravity water tank fill w/lockable door****Safety****Child seat tether anchor** (dinette) (NA U-Shaped dinette)**LP, smoke and carbon monoxide detectors****10 BC fire extinguisher****Ground fault interrupter****Fog lamps****High-mount brake lamps****Warranty⁷****12-month/15,000-mile basic limited warranty⁸****36-month/36,000-mile limited warranty on structure⁸****10-year limited parts-and-labor warranty on roof skin⁸**

- 1 The height of each model is measured to the top of the tallest standard feature and is based on the curb weight of a typically equipped unit. The actual height of your vehicle may vary by several inches depending on chassis or equipment variations. Please contact your dealer for further information.
- 2 Floorplans feature a wide-body design – over 96." In making your purchase decision, you should be aware that some states restrict access on some or all state roads to 96" in body width. Before making your purchase decision, you should confirm the road usage laws in the states of interest to you.
- 3 The load capacity of your motorhome is designated by weight, not by volume, so you cannot necessarily use all available space when loading your motorhome.
- 4 Capacities are based on measurements prior to tank installation. Slight capacity variations can result due to installation applications.
- 5 Capacities shown are tank manufacturer's listed water capacity (W.C.). Actual filled LP capacity is 80% of listing due to overfilling prevention device on tank.
- 6 Actual towing capacity is dependent on your particular loading and towing circumstances, which includes the GVWR, GAWR, and GCWR as well as adequate trailer brakes. Please refer to the Operator's Manual of your vehicle for further towing information.
- 7 See separate chassis warranty.
- 8 See your dealer for complete warranty information.

NA Not Available

Not all items available in combination. See dealer for details.

Winnebago Industries® continuing program of product improvement makes specifications, equipment, model availability, and prices subject to change without notice. Published content reflects the most current product information at time of printing. Please consult your dealer for individual vehicle features and specifications.



GOITASCA.COM
HAS ALL THE ANSWERS

Visit **Goltasca.com** on your computer, smartphone or tablet for the latest product information and updates.

COMMITTED TO SERVICE

PREFERRED CARE PROGRAM

We back our motorhomes with best-in-class support both before and after the sale:

- 12-month/15,000-mile basic limited warranty
- 36-month/36,000-mile limited warranty on structure
- 10-year limited parts-and-labor warranty on roof skin
- Complimentary 24-hour roadside assistance program



- TripSaver® Fast Track Parts guarantees that in-stock warranty parts ship directly to your dealer within 24 hours
- National dealer service network



**WIT
CLUB**

JOIN THE CLUB, JOIN THE FUN

As an Itasca motorhome owner, you are invited to join the WIT Club. It's a great way to take full advantage of your new coach and meet fun-loving WIT Club members from across the country who make motorhome adventures a way of life.



Members enjoy:

- Caravans and rallies
- Newsletters
- Local and state group activities
- RV travel benefits

See more at **WITclub.com**



GRAND NATIONAL RALLY

In 1969, two things happened: Neil Armstrong took mankind's first steps on the moon, and Winnebago Industries' WIT Club launched its first Grand National Rally in Forest City, Iowa. Every year since then, thousands of rally-goers connect with old friends to enjoy concerts, tours, activities, and more. Blast off for an adventurous week in July to celebrate 45 years of interstate land roving at the 2014 "Out of This World" Grand National Rally. It's a mission you'll never forget!



GOITASCA.COM HAS ALL THE ANSWERS

Visit **Goitasca.com** on your computer, smartphone or tablet for the latest product information and updates.

COMMITTED TO SERVICE

PREFERRED CARE PROGRAM

We back our motorhomes with best-in-class support both before and after the sale:

- 12-month/15,000-mile basic limited warranty
- 36-month/36,000-mile limited warranty on structure
- 10-year limited parts-and-labor warranty on roof skin
- Complimentary 24-hour roadside assistance program



- TripSaver® Fast Track Parts guarantees that in-stock warranty parts ship directly to your dealer within 24 hours
- National dealer service network



WIT CLUB

JOIN THE CLUB, JOIN THE FUN

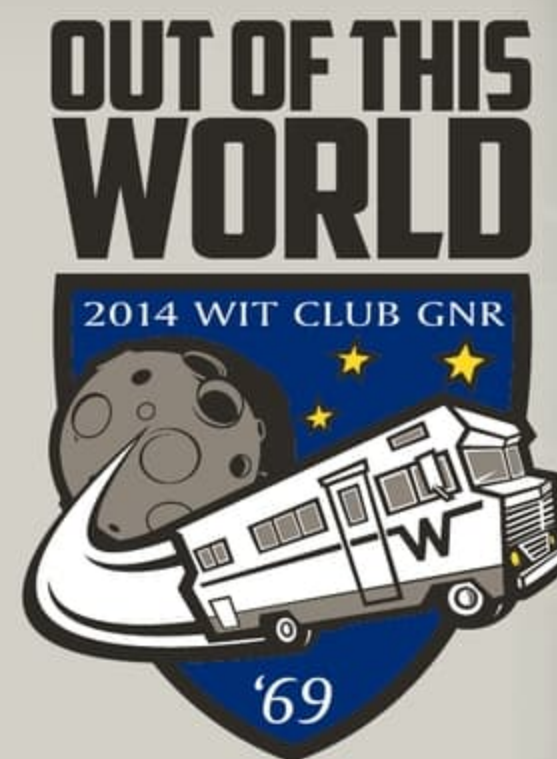
As an Itasca motorhome owner, you are invited to join the WIT Club. It's a great way to take full advantage of your new coach and meet fun-loving WIT Club members from across the country who make motorhome adventures a way of life.



Members enjoy:

- Caravans and rallies
- Newsletters
- Local and state group activities
- RV travel benefits

See more at **WITclub.com**



GRAND NATIONAL RALLY

In 1969, two things happened: Neil Armstrong took mankind's first steps on the moon, and Winnebago Industries' WIT Club launched its first Grand National Rally in Forest City, Iowa. Every year since then, thousands of rally-goers connect with old friends to enjoy concerts, tours, activities, and more. Blast off for an adventurous week in July to celebrate 45 years of interstate land roving at the 2014 "Out of This World" Grand National Rally. It's a mission you'll never forget!