



2015  
**CANYON  
STAR**

GAS MOTOR COACH



WHEN YOU KNOW THE DIFFERENCE <sup>SM</sup>

---

## THE BEST THINGS IN LIFE TRAVEL WELL

FOR DIESEL-COACH STYLE AND amenities in a top-of-the-line gas offering, no one puts it all together quite like the 2015 Canyon Star from Newmar. You'll find comprehensive quality and peerless luxury in a wide variety of floorplans, all featuring the craftsmanship that has set Newmar apart for over a generation. The sleek exterior makes an unmistakable statement, with stainless chrome creating a clean, modern look, plus more vibrant exterior

graphics for an even richer appearance. It's a truly handsome way to glide along life's journey, thanks to a custom Ford F-53 chassis smoothing every mile.

Whatever your needs in a luxury motor coach—from weekend leisure to vacation voyage to a life on full-time cruise control—Canyon Star takes you to the next level in a style few can match.

“

Experience the  
ultimate combination  
of style and comfort.”





---

## 2015 CANYON STAR

*A Joy To Behold*

From stem to stern, Canyon Star looks the part of a luxury coach designed to inspire. You'll appreciate touches like an expansive cockpit windscreen for outstanding visibility and flush-mount slide-outs for a tight fit and quieter ride.

- Full-Paint Masterpiece™ Finish with front protective film
- Ford F-53 Chassis built specifically for Newmar
- 5.5 kW Cummins Onan® Marquis Generator
- Dometic® Weather Pro Power Side Awning with Aluminum Weather Shield



WHEN YOU KNOW THE DIFFERENCE <sup>SM</sup>





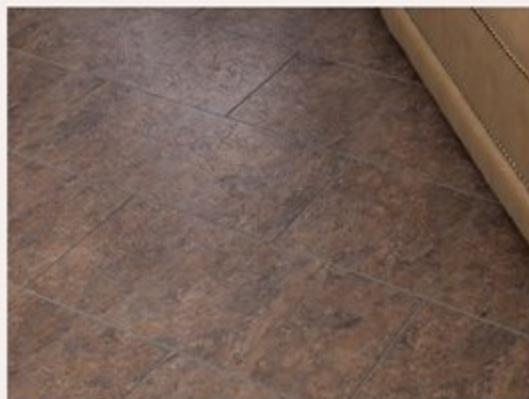
MESQUITE EXTERIOR - FLOORPLAN 3914





DENTON DÉCOR STYLE AND MANHATTAN GLAZED MAPLE CABINETRY - FLOORPLAN 3914





## SPACIOUSLY SPECIAL

The Canyon Star interior is an eminently livable and welcoming space. Friends and family will feel right at home amidst the comforts that come from owning a Newmar.

New furniture styling and luxury vinyl tile flooring, along with new carpeting and fresh artwork, helps set the 2015 Canyon Star apart. And with a Swivel Base Sony® HDTV system, complete with the option of ultra high-quality Blu-Ray DVD, you'll get a whole new angle on your entertainment possibilities.

- Flexsteel® Ultralux leather sofa and driver passenger seats
- LED TV in living and bedroom areas with Blu-Ray DVD player\*
- Luxury vinyl tile floor in kitchen, bathroom and living area

\*Optional





## AT YOUR SERVICE

The family gourmet can make the most of his or her talents in the large, well-appointed Canyon Star kitchen area. There's space to spare, along with residential-caliber conveniences and polished solid surface countertops to help make everything from preparation to clean-up equally effortless.

Custom crafted cabinets with designer glazed doors offer the storage every chef appreciates, while your choice of handy hidden-leaf dinette options means your table is always waiting.

- Three-burner recessed range with glass oven door and Piezo Ignition
- Interior lighting system including slide-out fascia with accent lighting
- Whirlpool® 19.8 refrigerator with icemaker and water dispenser\*
- Whirlpool® two-piece washer and dryer\*

\*Optional













“

It's not a dream.  
It's a Newmar.



Sleeping quarters in the 2015 Canyon Star are roomy, refined and residential-style throughout. The king bed gives you the option to choose Sleep Number® mattress comfort and includes a handsome quilted spread with shams, bed scarf and accent pillows. There's even an optional powerlift to incline the bed while creating an extra wide pathway to the rear bath.

Want more? How about high-end Sony® entertainment and storage everywhere you look, including a fine furniture wardrobe with mirrored doors that can accommodate a washer-dryer combo.

- Sony® LED television in living and bedroom areas
- Sony® Blu-Ray DVD players in living and bedroom areas\*
- Sleep Number® deluxe air mattress\*
- Powered bed lift\*

\*Optional

**SONY®**

---

## CUSTOM CRAFTED TO YOUR LIFESTYLE

Whether you're beginning the day or ending it, the Canyon Star's master bath is prepared to pamper. The spacious shower offers enhanced accessibility and comforts that include a high quality shower head and overhead skylight for enhanced illumination.

- Dometic® Traveler China Toilet
- High Definition Laminate bathroom countertop with solid surface edge and porcelain sink
- ABS shower with glass enclosure
- Demand Water System with SHURflo® Pump





Newmar makes Canyon Star your palette for personalization, with your choice of interior and exterior décor styles, a variety of cabinetry wood options and an array of floorplans that let you design your dream vehicle around your lifestyle, instead of the other way around.

Among the many highlights: a 100" L-shaped sofa with low profile arms for easier lounging. This contemporary sectional not only doubles as a bed, it also faces an angled "televator" TV display to provide the perfect vantage for high definition entertainment.

- Extenda L hide a bed sofa\*
- Custom crafted wrought iron and wood entry handrail
- Auto Motion power dual window shades with remote control\*
- Fantastic® vents with rain sensor in kitchen, bathroom and garage

\*Optional





MESQUITE EXTERIOR - FLOORPLAN 3914





## DESIGNED FOR THE ROAD, BUILT FOR YOU

The comforts of home are never far away when you travel with the quality and craftsmanship of Newmar. We're with you every mile, combining attention to your needs with truly legendary support. Step into the 2015 Canyon Star and leave your cares—and the competition—behind.

- New chrome exterior accents
- Flush-mount entertainment center
- Side-hinged baggage doors
- Frameless dual pane windows





“

With Canyon Star, There's  
Just No Stopping You.”



### 3911

App. Overall Length	39'11"
Width	101.5"
App. Overall Height	12'11"
Interior Width	95.5"
Interior Height	84"
Grey Tank	60 gal.
Sewage Tank	40 gal.
Water Tank	75 gal.
Propane Tank	25 gal.
Furnace	40,000 btu



## ADVENTURE HAS NO LIMITS

Choose the Canyon Star's 3911 Wheelchair-Accessible floorplan and adventure becomes an equal-opportunity destination. Our popular powered wheelchair lift option returns to make mobility a breeze for any owner.

Other accessibility extras include: a 30" wide path from front to bed with slideouts in; an easy-to-reach microwave positioned under the cooktop; lower profile control switches behind the passenger seat; bathroom features such as a roll-in shower door, grab bars, and accessible sink; and an L-shaped dinette with wheelchair seating space.

- Power-opening wheelchair-access door in 3911 floor plan\*
- Wheelchair lift featured in 3911 floor plan
- Wheelchair-accessible dining, bathroom and complete interior in 3911 floor plan

\*Optional



## EXTERIOR DECOR



---

MESQUITE EXTERIOR

## INTERIOR DECOR



---

DENTON INTERIOR



---

KENORA EXTERIOR



---

THUNDER BAY INTERIOR



## OPTIONAL LAMINATE PLANK FLOORING



---

FLOORING 1



---

FLOORING 2

## WOOD OPTIONS



---

HARVEST GLAZED  
MAPLE



---

VERONA GLAZED  
MAPLE



---

MANHATTAN GLAZED  
MAPLE



“

Expand Your Possibilities.”

---

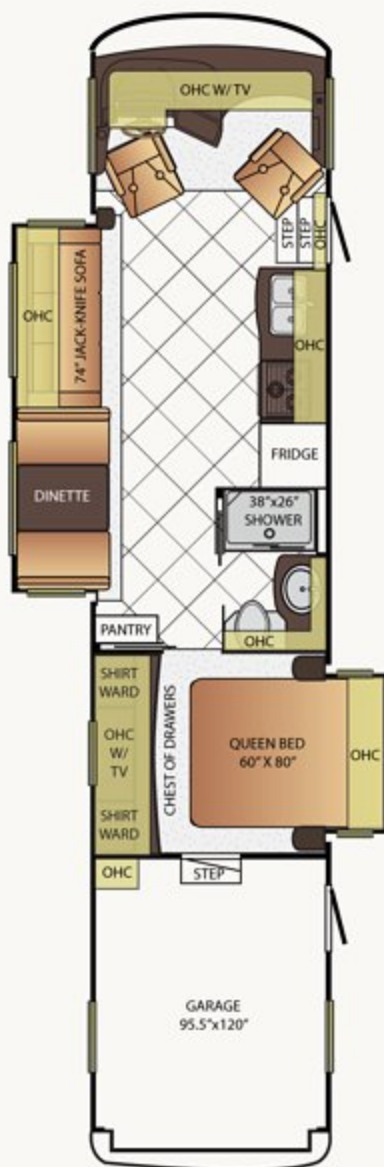
### A GARAGE ON THE GO

The Canyon Star 3920 “Toy Hauler” floorplan adds a versatile rear garage compartment that can be used for anything from storage to kid’s playroom to mobile office. Or add an extra bedroom with the optional aft-accessed half bath and electric bunk beds.



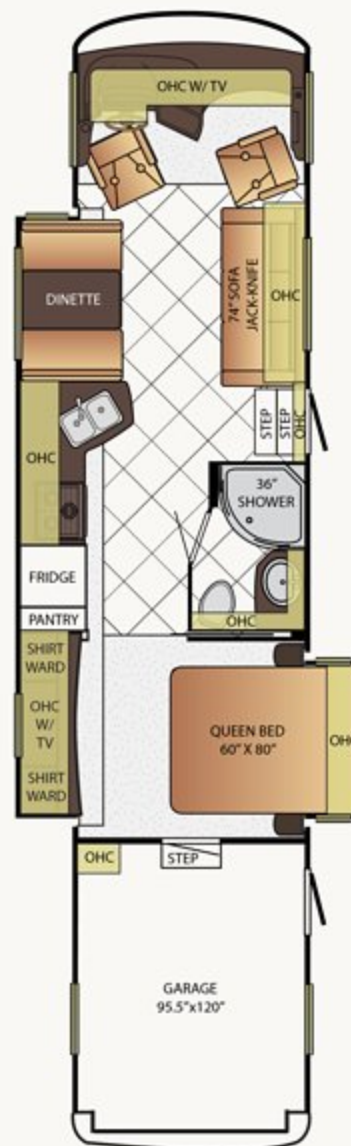


## FLOOR PLANS



### 3920

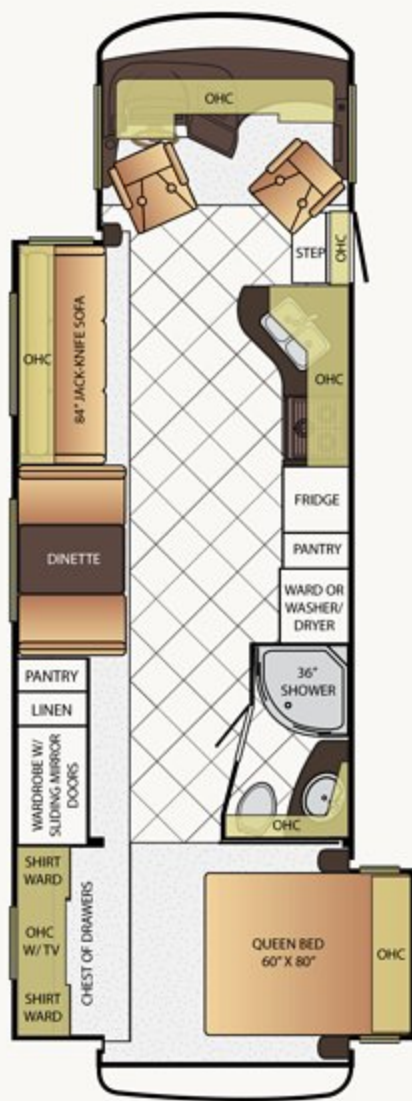
App. Overall Length	39'11"
Width	101.5"
App. Overall Height	12'11"
Interior Width	95.5"
Interior Height	84"
Grey Tank	60 gal.
Sewage Tank	40 gal.
Water Tank	75 gal.
Propane Tank	25 gal.
Furnace	40,000 btu



### 3921

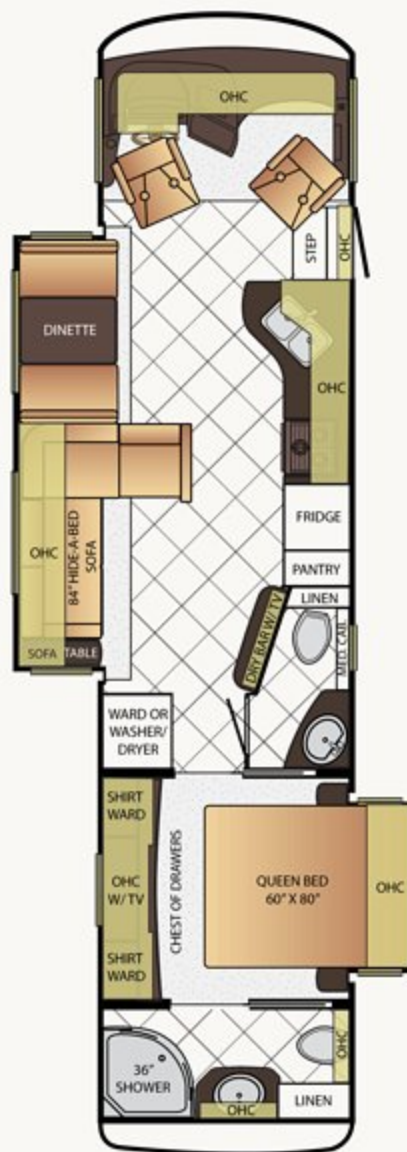
App. Overall Length	39'11"
Width	101.5"
App. Overall Height	12'11"
Interior Width	95.5"
Interior Height	84"
Grey Tank	60 gal.
Sewage Tank	40 gal.
Water Tank	75 gal.
Propane Tank	25 gal.
Furnace	42,000 btu

## FLOOR PLANS



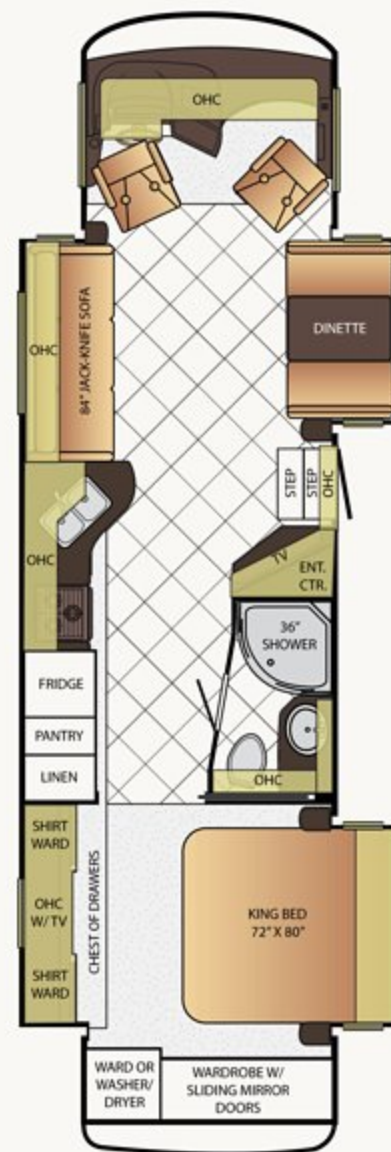
### 3424

App. Overall Length	34'11"
Width	101.5"
App. Overall Height	12'10"
Interior Width	95.5"
Interior Height	84"
Grey Tank	60 gal.
Sewage Tank	40 gal.
Water Tank	75 gal.
Propane Tank	25 gal.
Furnace	40,000 btu



### 3610

App. Overall Length	36'11"
Width	101.5"
App. Overall Height	12'10"
Interior Width	95.5"
Interior Height	84"
Grey Tank	60 gal.
Sewage Tank	86 gal.
Water Tank	75 gal.
Propane Tank	25 gal.
Furnace	40,000 btu





## FLOOR PLANS

### 3612

App. Overall Length	36'11"
Width	101.5"
App. Overall Height	12'10"
Interior Width	95.5"
Interior Height	84"
Grey Tank	60 gal.
Sewage Tank	40 gal.
Water Tank	75 gal.
Propane Tank	25 gal.
Furnace	42,000 btu



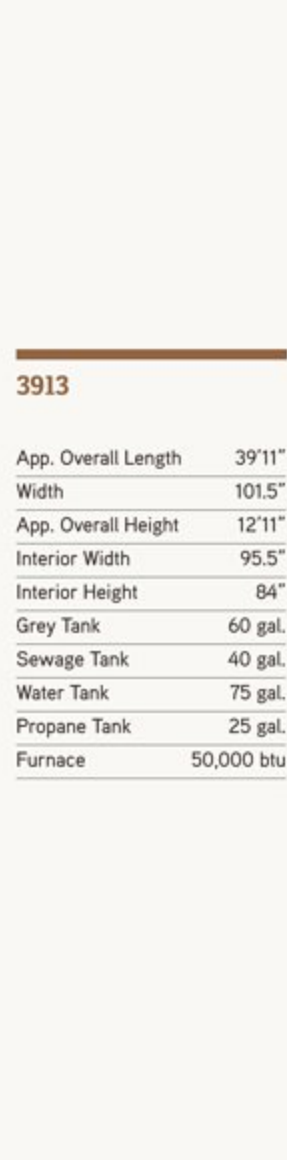
### 3650

App. Overall Length	36'11"
Width	101.5"
App. Overall Height	12'10"
Interior Width	95.5"
Interior Height	84"
Grey Tank	60 gal.
Sewage Tank	40 gal.
Water Tank	75 gal.
Propane Tank	25 gal.
Furnace	40,000 btu

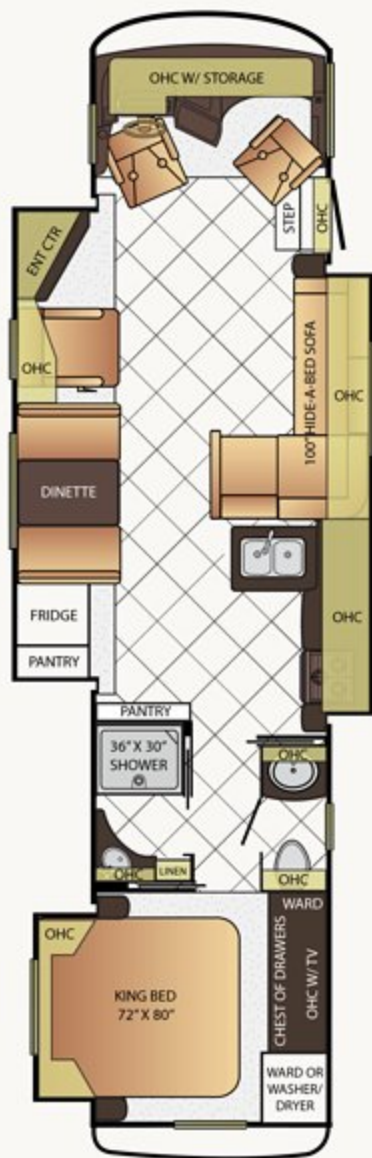


### 3913

App. Overall Length	39'11"
Width	101.5"
App. Overall Height	12'11"
Interior Width	95.5"
Interior Height	84"
Grey Tank	60 gal.
Sewage Tank	40 gal.
Water Tank	75 gal.
Propane Tank	25 gal.
Furnace	50,000 btu

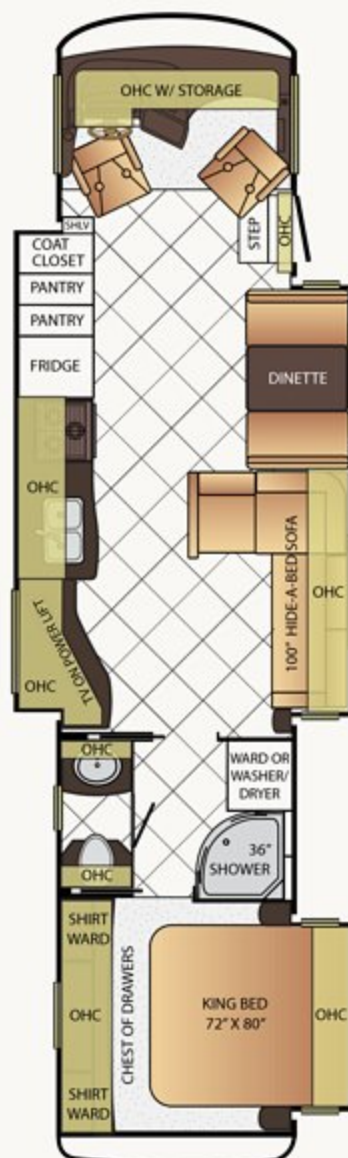


## FLOOR PLANS



### 3914

App. Overall Length	39'11"
Width	101.5"
App. Overall Height	12'11"
Interior Width	95.5"
Interior Height	84"
Grey Tank	60 gal.
Sewage Tank	40 gal.
Water Tank	75 gal.
Propane Tank	25 gal.
Furnace	40,000 btu

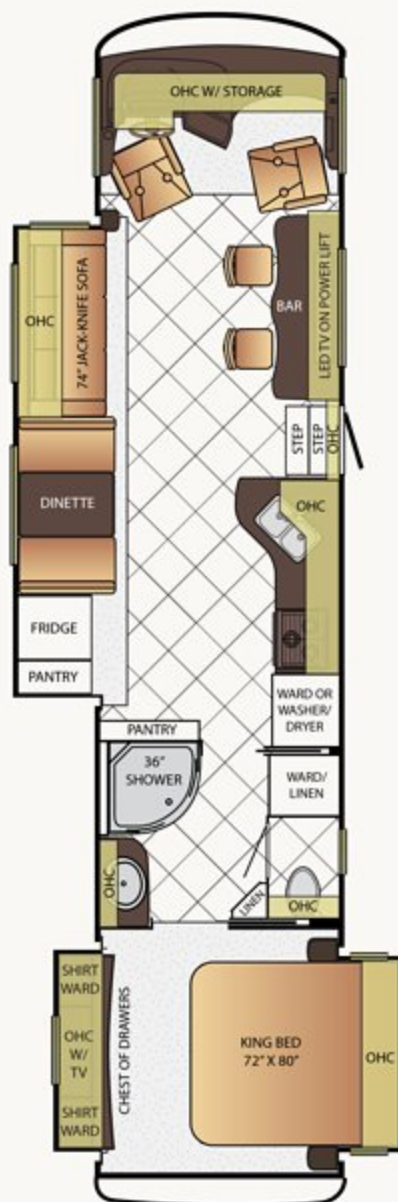


### 3919

App. Overall Length	39'11"
Width	101.5"
App. Overall Height	12'11"
Interior Width	95.5"
Interior Height	84"
Grey Tank	60 gal.
Sewage Tank	40 gal.
Water Tank	75 gal.
Propane Tank	25 gal.
Furnace	40,000 btu



## FLOOR PLANS



### 3941

App. Overall Length	39'11"
Width	101.5"
App. Overall Height	12'11"
Interior Width	95.5"
Interior Height	84"
Grey Tank	60 gal.
Sewage Tank	40 gal.
Water Tank	75 gal.
Propane Tank	25 gal.
Furnace	40,000 btu



### 3953

App. Overall Length	39'11"
Width	101.5"
App. Overall Height	12'11"
Interior Width	95.5"
Interior Height	84"
Grey Tank	60 gal.
Sewage Tank	86 gal.
Water Tank	75 gal.
Propane Tank	25 gal.
Furnace	40,000 btu

# CONSTRUCTION & CHASSIS SPECIFICATIONS





LIKE A FINE HOME, Canyon Star is framed 16 inches on center, allowing the best placement of outlets, switches and other components. Newmar uses only Sikaflex elastic adhesive throughout Canyon Star's construction – one of the strongest bonding agents available. It seals against air and

water and helps dampen sound and vibration. Electrical wiring holes in Canyon Star's aluminum frame are ringed with plastic grommets to protect wires from chafing. And Newmar's Total Comfort™ Central Air is two separate, fully ducted systems that distribute cool air and remove warm air.

#### ROOF R-VALUE = 16

- a. Fiberglass Roof
- b. Fiberglass Batten Insulation
- c. A/C Ducting
- d. Aluminum Rafter Framing
- e. Kraft Paper Vapor Barrier
- f. 5/8" Bead Foam
- g. 3/16" Panel
- h. Padded Vinyl Overlay

#### SIDEWALL R-VALUE = 11

- i. 3/16" Plywood Interior Wall
- j. 5/8" Bead Foam
- k. Kraft Paper Vapor Barrier
- l. Fiberglass Batten Insulation
- m. 3/16" Plywood Exterior Wall
- n. Composite One-Piece Gelcoat Exterior Sidewall
- o. Aluminum Framing with 3 1/2" Header Above

#### FLOOR R-VALUE = 11

- p. Carpet/Tile
- q. Carpet Padding
- r. 5/8" Floor Decking
- s. Fiberglass Batten Insulation
- t. 2"x 3" Wood Framing
- u. Polyethylene Moisture Barrier

1. 15M Penguin™ Heat Pump Central Air Conditioners (3)
2. One-Piece Bonded Windshield
3. Coated Aluminum Wheels
4. Frameless, Double-Pane, Tinted Safety-Glass Windows
5. Side-Hinged Baggage Doors

Floor Plan	Engine HP	Axle Ratio	Fuel Cap.	Wheel Base	Front GAWR*	Rear GAWR*	Tag GAWR*	GVWR*	GCWR*	App. UVW	App. NCC
3424	362	5.38	80 gal.	216+TAG	9,000 lb.	15,500 lb.	0	24,000 lb.	30,000 lb.	20,082 lb.	3,918 lb.
3610	362	5.38	80 gal.	234+TAG	9,000 lb.	15,500 lb.	0	24,000 lb.	30,000 lb.	20,286 lb.	3,714 lb.
3612	362	5.38	80 gal.	228+TAG	9,000 lb.	15,500 lb.	0	24,000 lb.	30,000 lb.	20,682 lb.	3,318 lb.
3650	362	5.38	80 gal.	234+TAG	9,000 lb.	17,500 lb.	0	26,000 lb.	30,000 lb.	20,789 lb.	5,211 lb.
3911	362	5.38	80 gal.	260+TAG	9,000 lb.	17,500 lb.	0	26,000 lb.	30,000 lb.	21,930 lb.	4,097 lb.
3913	362	5.38	80 gal.	266+TAG	9,000 lb.	17,500 lb.	0	26,000 lb.	30,000 lb.	21,850 lb.	4,150 lb.
3914	362	5.38	80 gal.	266+TAG	9,000 lb.	17,500 lb.	0	26,000 lb.	30,000 lb.	21,840 lb.	4,160 lb.
3919	362	5.38	80 gal.	266+TAG	9,000 lb.	17,500 lb.	0	26,000 lb.	30,000 lb.	21,570 lb.	4,430 lb.
3920	362	5.38	80 gal.	266+TAG	9,000 lb.	17,500 lb.	0	26,000 lb.	30,000 lb.	21,576 lb.	4,424 lb.
3921	362	5.38	80 gal.	266+TAG	9,000 lb.	17,500 lb.	0	26,000 lb.	30,000 lb.	21,729 lb.	4,271 lb.
3941	362	5.38	80 gal.	260+TAG	9,000 lb.	17,500 lb.	0	26,000 lb.	30,000 lb.	21,683 lb.	4,317 lb.
3953	362	5.38	80 gal.	260+TAG	9,000 lb.	17,500 lb.	0	26,000 lb.	30,000 lb.	22,788 lb.	3,212 lb.

Lengths, heights, widths and dry weights are approximate. Weight will vary based on optional equipment added to the above base weight.

**GAWR:** Gross Axle Weight Rating is the maximum permissible weight for an axle.

**GVWR:** Gross Vehicle Weight Rating is the maximum permissible weight for a fully loaded motor coach.

**GCWR:** Gross Combination Weight Rating is the value specified by the manufacturer of the vehicle as the maximum allowable loaded weight of this motor coach and any towed trailer or towed vehicle.

**UVW:** Unloaded Vehicle Weight is the weight of this motor coach as built at the factory with full fuel, engine oil and coolants. The UVW does not include cargo, fresh water, propane gas or dealer-installed accessories.

**NCC:** Net Carrying Capacity is the maximum weight of all occupants, including the driver, personal belongings, food, fresh water, waste water, propane gas, tools, tongue weight of towed vehicle, dealer-installed accessories, etc., that can be carried by the motor coach.

\*Specifications supplied by the chassis manufacturer.

## FEATURES & OPTIONS



### Chassis Features

*Built specifically for Newmar with the highest quality in handling, safety, performance and dependability.*

Ford® F-53 24,000 lb. Chassis (3424, 3610, & 3612 Floorplans)

Ford® F-53 26,000 lb. Chassis (3650 & 39' Floorplans)

Hydraulic Leveling Jacks

Tilt Steering Wheel

Aluminum Wheels



### Air Conditioning & Heating

*Total Comfort Air Conditioning and Hydronic Zone Heating systems make climate control simple and effective.*

Two 13.5M Penguin Central Air Conditioners

Driver & Passenger Dash Overhead Ventilation System

Propane Gas Furnace with Ducted Heat

#### OPTIONS

Two 13.5M Penguin™ Heat Pump Central Air Conditioners

13.5M Penguin™ Air Conditioner with Heat Strip in Garage®

Auxiliary Heater in Bedroom



### Appliances

*All of the amenities of a fine home are integrated in the Newmar design, in form and capabilities.*

Three-Burner Recessed Range with Glass Oven Door®

Norcold® 8 Cf. Refrigerator

30" Over the Range Microwave Oven®

10 gal. Gas/Electric Water Heater Direct-Spark Ignition

#### OPTIONS

30" Convection Microwave with Three-Burner Gas Cooktop and Dishwasher

30" Convection Microwave with Three-Burner Gas Cooktop with Piezo Ignition

30" Convection Microwave in Kitchen Overhead with Drawer Below Cooktop

Microwave and a Three Burner Gas Range with Oven

Norcold® 12 Cf. Four-Door Refrigerator with Ice Maker

Whirlpool 19.8 Cf. Refrigerator with Ice Maker, Water Dispenser, 2000 Watt Inverter and six-6 Volt Batteries

Frigidaire® 10 Cf. Refrigerator with Dedicated 1000 Watt Pure Sine Inverter and Two Extra Batteries

Whirlpool® Two Piece Washer & Dryer in Garage Area® (3920 and 3921 Floorplans)

Whirlpool® Two Piece Washer & Dryer

Washer/Dryer Prep

Washer/Dryer Prep in Garage®

Central Vacuum with Deluxe Tool Kit

Shop Vac in Garage®

Electric Fireplace in Living Area®



### Audio, Video, & Accessories

*Stay entertained on the road and off, with spectacular visual and sound options from industry leaders.*

Sony® LED TV and DVD Player in Living and Bedroom Area (TV Sizes Vary Per Floorplan)

AM/FM Dash Radio with CD Player and Bluetooth™

AM/FM Radio and Single-Disc CD Player with Two Exterior and Two Interior Speakers in The Garage®

Rearview Color Monitor System with Audio

Winegard Digital TV Antenna

Satellite Prep on Roof

#### OPTIONS

Dash Radio with Touch Screen Navigation System

Sony® Surround Sound System with Sub-Woofer

Sirius® Satellite Radio Capability (Does not include monthly subscription)

11" Flip-down LCD Monitor/DVD Player with Headphones at Each Bunk®

Sony® 40" LED TV in Front Overhead

Sony® 48" TV on Televator with Fireplace in Place of Front Overhead TV®

Winegard® Digital TV Antenna with Power Lift

Winegard® Automatic Dome Satellite Dish (does not include receiver)

High-Definition Wiring with Blu-Ray DVD Player

Extra TV Located at Dry Bar Style Cabinet In Place of Pantry

LED TV in Garage®

Exterior Entertainment Center in Sidewall with Sony® 32" LED TV and Radio/CD

Exterior Entertainment Center in Storage Compartment with Sony® 32"

LED TV and Radio/CD

Sideview Cameras with Smart Phone Connection®



### Cabinets & Furniture

*Amish craftsmanship and elegance in design meld the wood cabinetry and furniture seamlessly with the Newmar interior.*

Empire Maple Glazed Cabinets with Designer Glazed Doors

Concealed Hinges on Cabinet Doors

Polished Solid Surface Countertop in Kitchen with Under Mounted Stainless Steel Sink

Laminate Countertop with Solid Surface Edge in Bathroom with Porcelain Sink

Laminate Countertop with Solid Surface Edge on Bedroom Nightstands and Chests

Residential-Style Full-Extension Ball Bearing Drawer Guides

Pull-out Pantry Shelves®

Flexsteel® Ultralux Leather Sofa and Driver Passenger Seats

Lambricht Swivel Wall Hugger Recliner®

Six-Way Power Driver Seat

Passenger Seat Work Station

Power Incline Head of Bed with Sleep Number® Deluxe Mattress on 3911 Floorplan

Power Incline Retracting Bed Base with Sleep Number® Deluxe Aire Mattress on 3914 Floorplan

#### OPTIONS

Bisque Maple Cabinets with Designer Glazed Doors

Sienna Maple Cabinets with Designer Glazed Doors

Harvest Maple Hardwood Face Frame Cabinets and Slideout Fascia

Manhattan Maple Hardwood Face Frame Cabinets and Slideout Fascia

Verona Maple Hardwood Face Frame Cabinets and Slideout Fascia

Six Way Power for Passenger Seat

Combination Desk/Dinette with Free Standing Hidden-Leaf Table with Four Chairs

Combination Desk with Buffet Dinette Table (Two Fixed/Two Folding)®

Combination Desk/Dinette with Roll Away Table (Two Fixed/Two Folding)®

Free Standing Hidden Leaf Dinette Table with Four Chairs (Two Fixed/Two Folding)®

Extenda L Hide a Bed Sofa in Place of Extend a L Sofa®

Extend a L Sofa®

Flexsteel® Ultralux Leather Extend a Flex Dinette

Hide-A-Bed Sofa®

Bunk Beds with Extra Door to Bathroom®

Sleep Number® Deluxe Air Mattress

Full Height Power Incline Head of Bed



Full Height Power Incline Retracting Bed Base

Power Incline Retracting Bed Base with Sleep Number® Deluxe Air Mattress

Electric Lift Bunk Beds with Removable Rug in Garage®

Electric Lift Bunk Beds with Seating, Pedestal Table and Removable Floor Rug in Garage®



## Electrical Features

*A Newmar coach's electrical and lighting system is designed for maximum reliability, functionality, and style.*

5.5 kW Cummins Onan® Marquis Generator with Remote Switch and Automatic Changeover

50 Amp Electrical Service with Flexible Cord and Automatic Transfer Switch

Two 12 Volt House Batteries

Battery Disconnect Switch for House Battery

110 Volt Exterior Receptacle

12 Volt Auxiliary Recept on Dashboard

5 Watt Solar Panel to Charge Chassis Battery

60 Amp Converter

Daytime Running Lights

Emergency Engine Start Switch

Accent Lights in Slideout Fascia Trim

LED Ceiling Lights Throughout

Manually Operated Hold-To-Run Slideout Switch

Energy Management System

Recept with Built in USB Charger at Passenger Seat Area

ICC Light Flasher Switch

Fog Lights

Lights in Exterior Storage Compartments, Controlled by an Interior Master Switch

### OPTIONS

600 Watt Inverters for Living Area and Bedroom TVs

7.0 Kw Onan Generator

Solar Prep



## Exterior Features

*The Full-Paint Masterpiece Finish is one of the most beautiful and durable in the industry.*

Full-paint Masterpiece Finish™ with Diamond Shield Protection on Front Cap

Convex Exterior Mirrors with Defrost and Remote Control

Entrance Door with Automatic Step

Entrance Door with Automatic Triple Step in Garage® (3920 and 3921 Floorplans)

Fueling Station in Garage® (3920 and 3921 Floorplans)

Lighted Exterior Storage Compartments with Cargo Liner and Interior Master Switch

Rear Hitch for Towing Car

Rear Ramp Access Designed for ATV and Normal Clearance Motorcycle® (3920 and 3921 Floorplans)

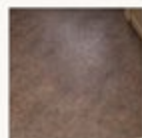
Wheelchair lift on 3911 Floorplan

Stainless Steel Trim Pieces

Undercoating

### OPTIONS

Rear Ladder



## Interior Features

*Flooring – both tile and carpet – is installed with Newmar's own in-house process, ensuring the best in quality and longevity, as well as the finest fit.*

Padded Vinyl Ceiling

Carpeting in Bedroom and On Slideout Floors

Inlaid Six Panel Design Interior Passage Doors

Auto Motion Power Shade at Windshield & Manual Shades at Driver/Passenger Side Windows

Day/Night Pleated Window Shades and Lambrequins

Dash Panel Color Coordinated ABS

Decorative Wall Art

Mini Blinds in Kitchen and Bathroom Windows

Vinyl Tile Floor in Kitchen, Living Area and Bathroom

Recessed Flip Down Counter Top in Garage Area® (3920 and 3921 Floorplans)

Shoe Storage Located in Entrance Door Step Compartment

Diamond Tread Rubber Flooring in Garage® (3920 and 3921 Floorplans)

Tie-down Track in Garage® (3920 and 3921 Floorplans)

10 Bc Fire Extinguisher, Smoke Detector and Carbon Monoxide Detector

10 Bc Fire Extinguisher in Garage (3920 & 3921 floorplan)



## Plumbing & Bath Features

*The Demand Water Systems residential flow response ensures that the comfort and reliability of home are never far away.*

Demand Water System

Sewage Holding Tank Rinse

Water Heater Bypass System

Dometic® Traveler China Toilet®

ABS Shower with Glass Enclosure®

Exterior Shower

Water Filter for Entire Unit

Systems Monitor Panel

### OPTIONS

110 Volt Heat Pads for Holding Tanks

Half Bath in Garage Area®



## Construction Features

*From the Chassis up, Newmar coaches are built to be dependable, durable, comfortable, and beautiful.*

BriteTEK™ Roof with Walkable Decking

5/8" Foam Insulation Laminated in Sidewalls and Ceiling

Gelcoated Fiberglass Exterior Sidewalls, Front and Rear Caps

Aluminum-Frame Sidewalls & Roof Construction, 16" on Center

### OPTIONS

One Piece Molded Fiberglass Roof

Polar Pak R19 Batten Insulation in Roof

Power Opening Wheelchair Lift Entrance Door on 3911 Floorplan



## Windows, Awnings & Vents

*Experience as much – or as little – of the outdoors as you want in comfort and style.*

Frameless Double-Pane Tinted Safety Glass Windows

Fantastic® Vent with Rain Sensor in Kitchen, Bathroom and Garage®

Skylight Above Shower

Dometic® Weather Pro Power Awning with Aluminum Weather Shield

Dometic® Slideout Covers

One Piece Tinted Windshield

### OPTIONS

Kitchen Window

Rear Window in Bedroom

Driver's Door with Power Window

Bunk Windows®

Screen for Rear Cargo Door ®

\*Check With Dealership On Floorplan Availability

---

## OUR PARTNERS

WHERE THE FINEST NAMES IN QUALITY AND PERFORMANCE ARE ALONG FOR THE RIDE.

To assure that you experience only the best in comfort, control and unsurpassed convenience in our incomparable family of Luxury Coaches, Newmar partners with the most prestigious names in mobile lifestyle, entertainment and technology. These brands are leaders in their fields – and legends in providing customers with new, unsurpassed levels of quality and reliability. Best in class performance from names you can trust. At Newmar, that's our difference. And our promise.



---

## TRUST

THE STRONGEST POSSIBLE FOUNDATION FOR A MOTOR COACH.

According to Newmar president Matthew Miller, "Customers say they're loyal to us because they trust us to stand behind our products – from support, parts and service to paying our warranties. It feels good to own a coach that has all of that behind it."

How do we sustain this high level of service? At Newmar, there's a Miller way of doing things. These principles guide us every day. Courtesy. Integrity. And reliability. So when you buy from Newmar, you know that every single person who touches your coach or talks with you has your back. Period.



*Matthew Miller, Newmar President, lifelong motor coach enthusiast.*





# 2015 CANYON STAR

## NEWMAR EXPRESS LIMITED WARRANTY

Every Canyon Star Gas motor coach is backed by Newmar's one-year limited warranty/unlimited miles. Ask your Newmar dealer for details.

## NEWMAR EXPRESS LIMITED WARRANTY

If any part of your Newmar recreational vehicle superstructure (which is the steel/aluminum structure of the sidewall, roof or frame) fails to perform properly within five years from the date of purchase because of faulty workmanship or material supplied by Newmar, it will be repaired without charge for either parts or labor by Newmar. This structural warranty is available only to the original purchaser and is non-transferable.

Some features in our literature are optional. Colors and finishes are photographic representations. The actual materials may look different. Prices, specifications and floor plans are subject to change at Newmar's discretion, without prior notice or obligation. Please see your dealer for actual samples and specifications.



WHEN YOU KNOW THE DIFFERENCE<sup>SM</sup>

NEWMAR CORPORATION | 355 N DELAWARE ST | PO BOX 30 | NAPPANEE IN 46550-0030 | 574-773-7791 Fax 574-773-2895

[www.newmarcorp.com](http://www.newmarcorp.com)