



Explore Southwind's Features and Benefits.

Power Gear Automatic Levelers — Fully automatic system provides convenient operation.

Larger Bedroom Slide-Out Rooms — Slide-out travel increases to 30" to allow more living space in the master suite.

Vertical Tail Lights — Mounted high on the rear cap to provide improved visibility.

Laminated EZ Store Luggage Compartments — These aluminum framed, insulated panels reduce road noise and add strength to the slide-out compartment.

Flush Floor Slide-Out System — Add a residential feel to the living area and allow the use of free-standing chairs.

Side Mounted Furnace Ducts — By utilizing side mounted furnace ducts, owners never have to worry about cleaning, or stepping on a hot floor mounted grill.

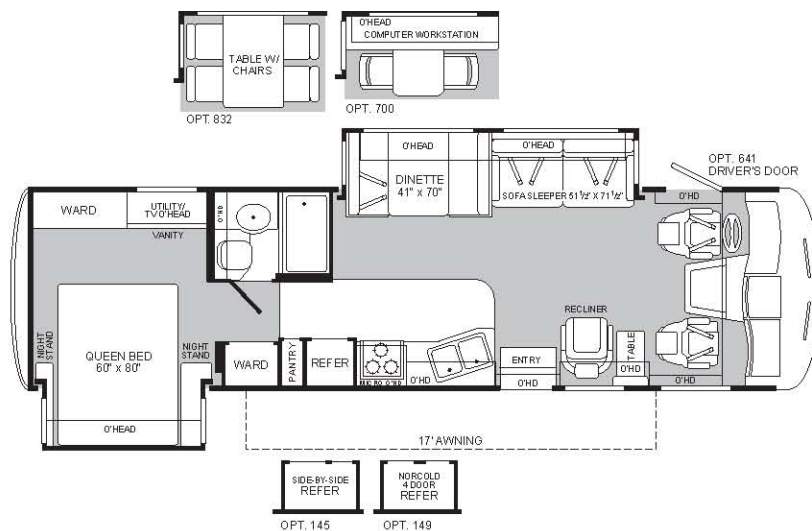
Coleman Mach A/C with Chill Grill — Both air conditioning units are equipped with "Chill Grills" to provide a quick cool down on those scorching hot days.

Rear Departure Angle — Rear Luggage Compartments are angled up to provide ground clearance and protect the coach against scuffing when traveling thru a depression in the road.

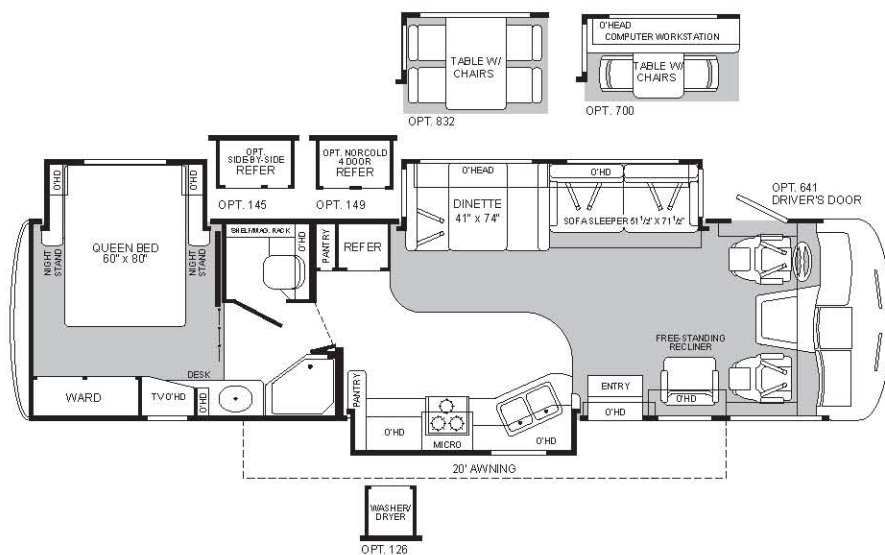
Aluminum Luggage Doors — Insulated and offer ease of operation, corrosion resistance and strength uncommon in competitor's fiberglass doors.

By Fleetwood — a name you know, a name you trust.

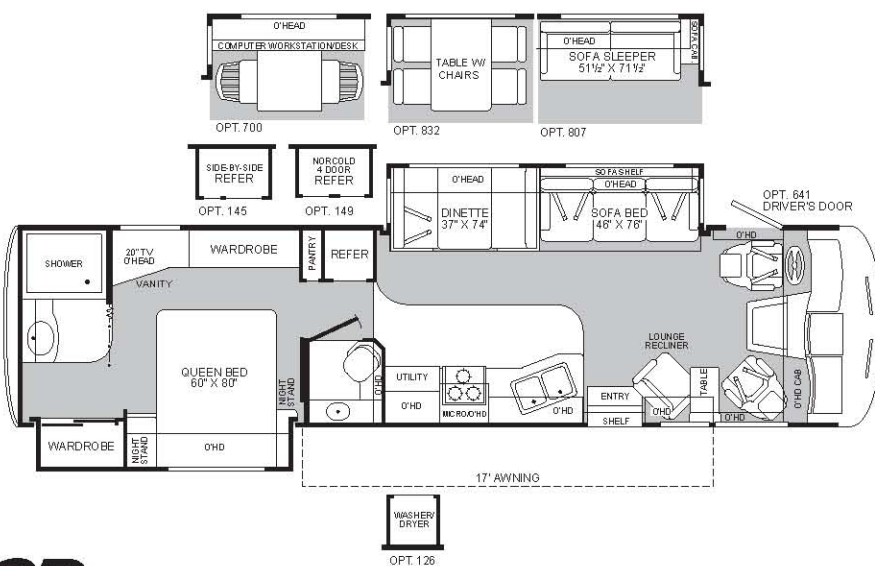
Model 32VS



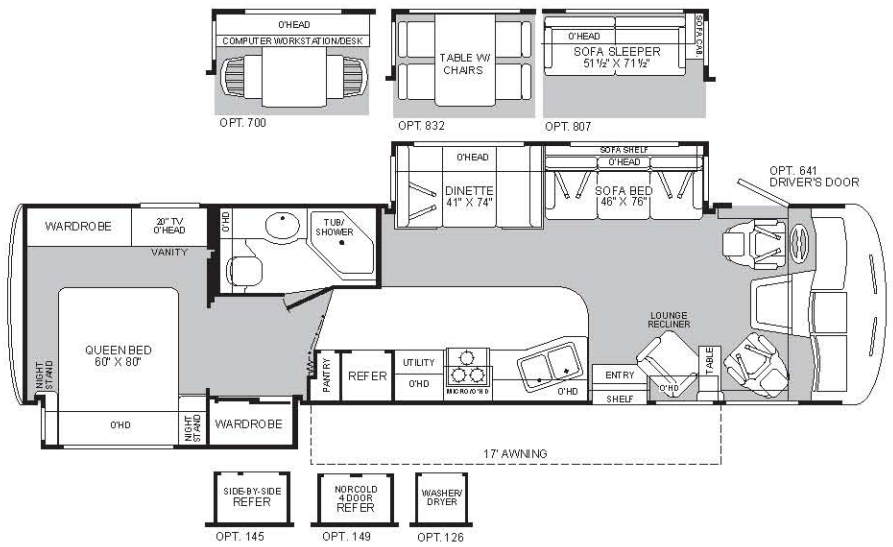
Model 36B



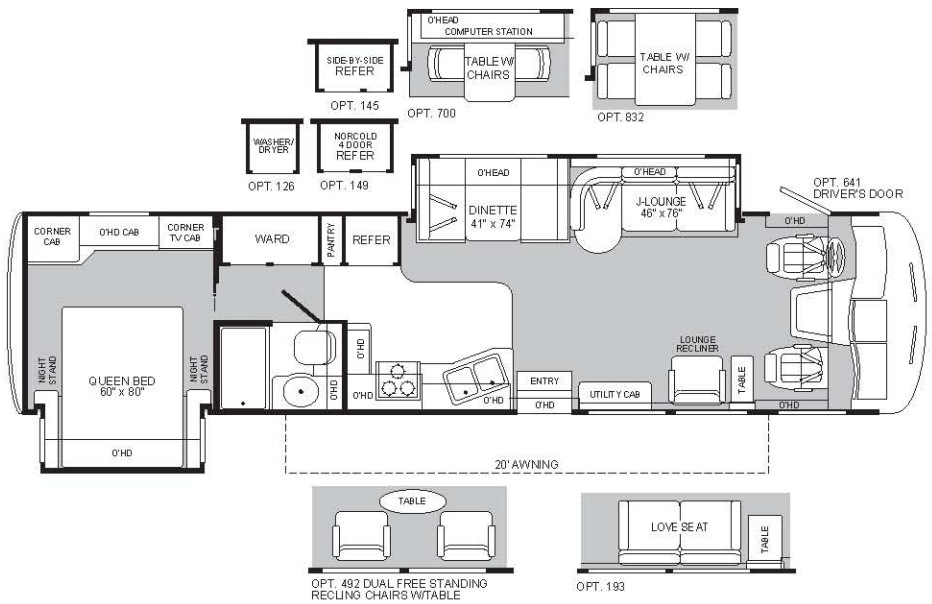
Model 36E



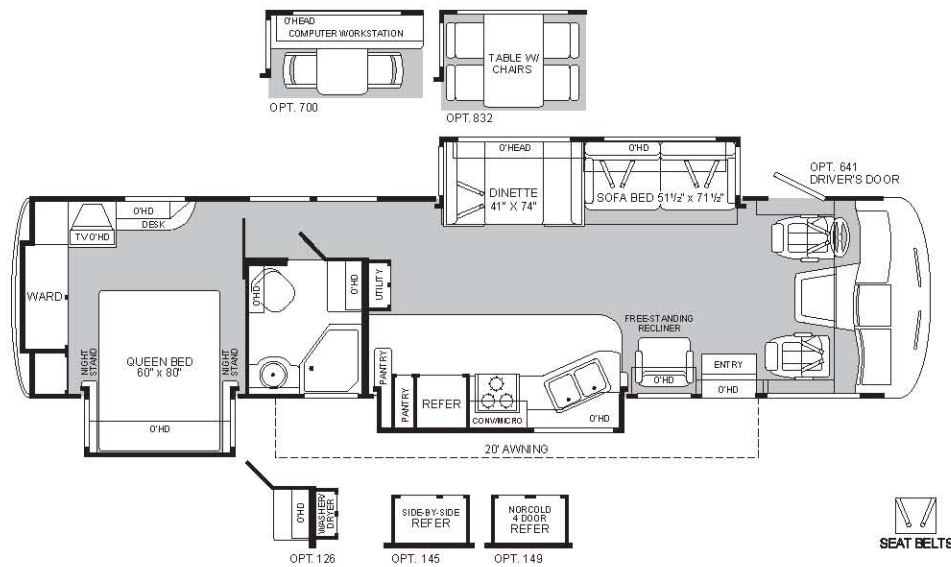
Model 36RS



Model 37A



Model 37C



Standard Features

Appliances

- Front 27" Panasonic® TV In Overhead
- Smoke Detector/Alarm
- LPG Leak Detector/Alarm
- CO Detector/Alarm
- 10-Gallon, Quick-Recovery Water Heater with D.S.I. (Gas/Electric)
- 22" 3-Sealed Burner, High-Output Cooktop with Oven
- Light/Power Range Hood
- Range Cover—Flush Mount
- 1-cu. ft. Microwave (1.4 cu. ft.—36B and 37C)
- Furnace 34,000 BTU (30,000, 20,000—36B and 37C)
- Dual Roof A/C High Efficiency with Solar Panel on Front A/C
- Water Heater Bypass System
- Porcelain Toilet with Water Saver
- Toilet Tank San-T-Flush™ System
- 8-cu. ft. Dometic® Double-Door Refrigerator
- Single-Lever Galley Faucet
- Water Filter with Faucet
- Demand Water Pump with Filter
- Power Bath Vent
- Hi-Fi VCR
- Rear Bedroom 20" Panasonic® TV
- TV Antenna
- Fan-Tastic® Power Roof Vent
- Fire Extinguisher
- Telephone Jack in Dash and Bedroom
- Rear Speakers in Bedroom
- DSS Manual Lift/Satellite Dish

Body Structure

- Vacubond Upper/Lower Floors
- Vacubond Walls with Smooth, High-Gloss Exterior Fiberglass
- Aluminum Wall/Ceiling Framing
- Radius Roof with Ducted A/C—Flat Interior Ceiling
- Royal Tuff-Ply™ Roof

Electrical

- Dual Patio Receptacles
- 120V/12V AC/DC Converter Central Electrical Panel
- 3-Way Water Pump Switch
- 5.5kW Generator
- 30-amp Service
- Wall Switches
- Electronic Climate Control
- Dual 6V/Deep-Cycle 218-amp House Batteries

Exterior

- Fiberglass Front/Rear Cap
- Swing-Down Engine Access Door
- Molded Front Quarter Panels
- Molded Rear Wheel Well Trims
- Entry Door with Deadbolt Latch
- Dual Pane Slider Windows
- Stainless Steel Mesh Front Grille
- Utility Compartment with Exterior Shower

- 4-Point Automatic Leveling System
- Roof Ladder
- Exterior Assist Handle
- Heated Remote Rear View Mirrors
- Park Cable Receptacle
- Awning Rail/Drip Molding (Both Sides)
- Power Entry Step
- Porch Light
- 3 Colorway Graphics to Match Decor
- Awning

Exterior Automotive

- Large, Curved Aerodynamic Windshield
- Stainless Steel Wheel Simulators
- Mud Flaps
- Underhood Utility Lights
- Steel Surface on Bulkhead
- Trailer Hitch with 7-Point Electrical Hook-Up*
- Halogen Headlights
- Fog Lights
- Rear Vision Camera with One-Way Sound
- Single Motor Windshield Wipers with Wet Arm

Exterior Storage

- Insulated Luggage Doors/Aluminum Skin
- Single Paddle/Latches
- Continuous One-Piece Bulb Seal
- Gas Lift Strut Supports
- Lighted Compartments
- Steel Seal Frames

Interior

- 3 Interior Decors
- Woven Jacquard Feature Fabrics
- Skylight in Tub/Shower and Galley
- Cherry Wood Grain or Maple Wood Grain
- Wall-to-Wall Nylon Carpet with Carpet Pad
- Vinyl Floor Covering—Bath
- Wood Drawers
- Roller Guide Drawer Slides with Transit Ship Locks
- Radius Corner Cabinetry
- Brushed Chrome Finish Cabinet Hardware
- 3-Point Front Seat Belts
- Bedspread with Decor Pillows
- Restonic® Deluxe Pillow Top Innerspring Mattress
- Solid Surface Galley Countertops
- Lounge Recliner
- Headboard
- Beveled Mirrors
- Slide-Out Dinette Bins with Latches
- Day/Night Shades (Living Area)
- Pleated Shades (Bedroom Area)
- Trash Basket in Galley
- Molded Tub/Shower Acrylic with One-Piece Enclosure
- Chrome Bath Accessories
- Residential Seat Styling
- Interior Egress Assist Rail (Brushed Nickel)
- Adjustable Cabinet Shelves (Selected Cabinets)
- TV Cabinet—Rear Bed
- Sink Cutting Board
- Solid Divider Doors
- Large, Double Stainless Steel Sink

Interior Automotive

- Intermittent Wiper Control
- Double-Swivel Sun Visors with Map Pockets
- Engine Cover Convenience Tray
- Cruise Control
- Low Profile Engine Cover
- Radio with CD AM/FM/MX—Electronic Tuning
- Tilt Steering Wheel
- Computer Workstation in Dash
- Auxiliary Start Circuit
- Battery Disconnect System
- Auto A/C Heater Combo
- Radio Switch—Main/Auxiliary Power
- Driver/Passenger Ultraleather™ Captain's Chairs with Reclining Back/Slide Controls with Power Driver Seat
- Dash Fans

Interior Lighting

- Wardrobe Lighting
- Fluorescent Ceiling with Dual Bulbs
- Decor Lighting
- Incandescent Lighting
- Make-Up Lights in Bath

Platform Construction

- Power Platform
- Basement Floor Configuration
- Heated Water & Holding Tank Compartments
- Polyethylene Luggage Compartment Boxes
- Steel Outriggers

*The chassis manufacturer recommends the installation of a supplemental brake control system to activate the brakes on the vehicle or trailer you are towing.

Options

Appliances

- 12-cu. ft. Side-by-Side Dometic® Refrigerator w/Ice Maker
- Norcold® 4-Door Refrigerator w/Ice Maker
- 8-cu. ft. Dometic® Stainless Steel Double Door Refrigerator w/Ice Maker
- Convection Microwave
- Washer/Dryer (Select Models)

Exterior Automotive

- CSA Package
- Electronic Awning—Weather Pro
- Ford® Chassis 6.8L Triton™ V10 Engine
- Workhorse® Chassis 8.1L Vortec Engine

Interior

- Dinette Table w/Free-Standing Chairs
- Dinette/Computer Workstation
- Driver's Door with Manual Crank Window Lift

Interior Automotive

- CB Radio Ready
- Stereo AM/FM with CD/Cassette

Ford® Chassis	32VS	36B	36E	36RS	37A	37C
Wheelbase	208"	228"	228"	228"	228"	N/A
GVWR (lbs) (1)	20,500	22,000	22,000	22,000	22,000	N/A
Front GAWR (lbs) (2)	7,000	7,500	7,500	7,500	7,500	N/A
Rear GAWR (lbs) (2)	13,500	14,500	14,500	14,500	14,500	N/A
Base Weight (lbs) (3)	16,710	17,880	17,870	17,260	17,780	N/A
GCWR (lbs) (4)	25,500	26,000	26,000	26,000	26,000	N/A
Hitch Rating Weight (lbs)*	5,000	5,000	5,000	5,000	5,000	N/A
Tongue Weight (lbs)*	500	500	500	500	500	N/A
Fuel Capacity (gal)	75	75	75	75	75	N/A

Workhorse® Chassis

Wheelbase	208"	228"	228"	228"	228"	242"
GVWR (lbs) (1)	20,700	22,000	22,000	22,000	22,000	22,000
Front GAWR (lbs) (2)	7,500	8,000	8,000	8,000	8,000	8,000
Rear GAWR (lbs) (2)	13,500	14,500	14,500	14,500	14,500	14,500
Base Weight (lbs) (3)	17,220	18,840	18,080	18,060	18,120	18,480
GCWR (lbs) (4)	25,700	26,000	26,000	26,000	26,000	26,000
Hitch Rating Weight (lbs)*	5,000	5,000	5,000	5,000	5,000	5,000
Tongue Weight (lbs)*	500	500	500	500	500	500
Fuel Capacity (gal)	75	75	75	75	75	75

Dimensions and Capacities

Overall Length (5)	32' 10"	35' 10"	36' 4"	36' 4"	37' 4"	37' 4"
Overall Height (with A/C) (8)	12' 2"	12' 2"	12' 2"	12' 2"	12' 2"	12' 2"
Overall Width (maximum) (6)	102"	102"	102"	102"	102"	102"
Interior Height (maximum)	79"	79"	79"	79"	79"	79"
Interior Width (maximum)	96"	96"	96"	96"	96"	96"
Fresh Water Holding Tank (gal)	100	100	100	100	100	100
Grey Water Holding Tank (gal)	58	58	58	58	58	58
Black Water Holding Tank (gal)	42	42	42	42	42	42
Appliance LPG Tank (gal) (WC) (7)	25	25	25	25	25	25
Water Heater Tank (gal)	10	10	10	10	10	10

Liquid Weight Reference: Water (gal) = (8.3 lbs/3.8 kgs) Fuel (gal) = (6.1 lbs/2.8 kgs) LPG (gal) = (4.2 lbs/1.9 kgs)

Metric Conversion: Multiply pounds x 0.453 to obtain kilograms Multiply gallons x 3.785 to obtain liters

1. GVWR (Gross Vehicle Weight Rating): Means the maximum permissible loaded weight of the motor home. The GVWR is equal to or greater than the sum of the unloaded vehicle weight plus the net carrying capacity.
 2. GAWR (Gross Axle Weight Rating): Means the maximum permissible loaded weight a specific axle is designed to carry.
 3. Base Weight: Means the estimated weight of the motor home without fuel, options, water, cargo or passengers.
 4. GCWR (Gross Combined Weight Rating): Means the value specified by the motor home manufacturer as the maximum allowable loaded weight of this motor home with its towed vehicle. Towing and braking capacities may differ. Refer to Fleetwood and chassis manufacturer manuals for complete information.
 5. Length taken from front bumper to rear bumper (excludes accessories).
 6. Excludes safety equipment and awnings.
 7. Tank Manufacturer's listed water capacity (WC). Actual LPG capacity is 80% of water listing as required by the safety code.
- * The chassis manufacturer recommends the installation of a supplemental brake control system to activate the brakes on the vehicle or trailer you are towing.

IMPORTANT — PLEASE READ: Product information, photography and illustrations included in this publication were as accurate as possible at the time of printing. For further product information and changes, please visit our website at www.fleetwoodrv.com or contact your local Fleetwood dealer. Prices, materials, design and specifications are subject to change without notice. All weights, fuel, liquid capacities and dimensions are approximate. Fleetwood has designed its recreational vehicles to provide a variety of uses for its customers. Each vehicle features optimal seating, sleeping, storage and fluid capacities. The user is responsible for selecting the proper combination of loads (i.e. occupants, equipment, fluids, cargo, etc.) to ensure that the vehicle's capacities are not exceeded.



RV OWNERCARE...

is a limited one-year/three-year or 15,000 mile warranty, whichever occurs first, and it is fully transferable for the first 12 months.



RV OWNERCARE is one of the RV industry's most comprehensive programs and includes systems, appliances, components, and construction, with no deductible and no service charge.

RV OWNERCARE coverage is provided from a company that will be around in the future to service your needs. See your nearest Fleetwood dealer for a full explanation of benefits and restrictions.

Club Fleetwood...

As a Fleetwood owner, you're eligible to become a member of our owners group, Club Fleetwood. It's a perfect way to meet other Fleetwood owners who love to travel to beautiful resorts and vacation spots all across America. Call (877) 577-2560 and join the fun!



What Drives You?

Maybe it's feeling like you're the only one on Earth. Perhaps it's the unique sense of closeness with the great outdoors. Or, it might be the joy that comes from spending quality time with family and friends.

Whatever the reason, we know that you have a strong drive to experience everything that comes with spending time on the road. And for more than 50 years, we've shared that passion with you.

Because we're RV enthusiasts ourselves, you can see our passion in the vehicles we design and build. Own a Fleetwood, and you'll feel like you're not just traveling, but embarking on an experience unlike any other.

Set your own course for adventure and get out there and explore the world around you. Once you do, you'll see what it is that drives us — it's you.



Your local Fleetwood dealer is:

www.fleetwoodrv.com Visit our website to find a dealer near you or learn more about other Fleetwood products. Or call 1-800-444-4905.

IMPORTANT—PLEASE READ: Product information, photography and illustrations included in this publication were as accurate as possible at the time of printing. For further product information and changes, please visit our website at www.fleetwoodrv.com or contact your local Fleetwood dealer. Prices, materials, design and specifications are subject to change without notice. All weights, fuel, liquid capacities and dimensions are approximate. Fleetwood has designed its recreational vehicles to provide a variety of uses for its customers. Each vehicle features optimal seating, sleeping, storage and fluid capacities. The user is responsible for selecting the proper combination of loads (i.e. occupants, equipment, fluids, cargo, etc.) to ensure that the vehicle's capacities are not exceeded.

