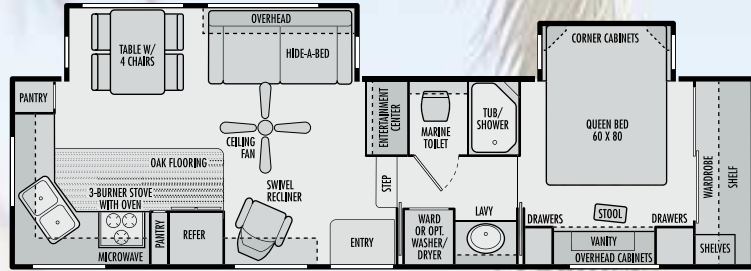
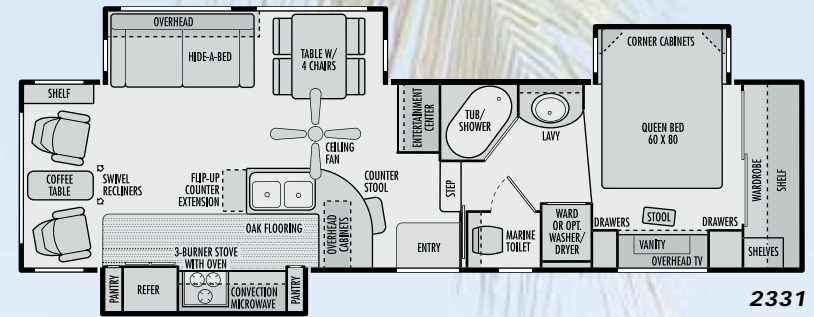


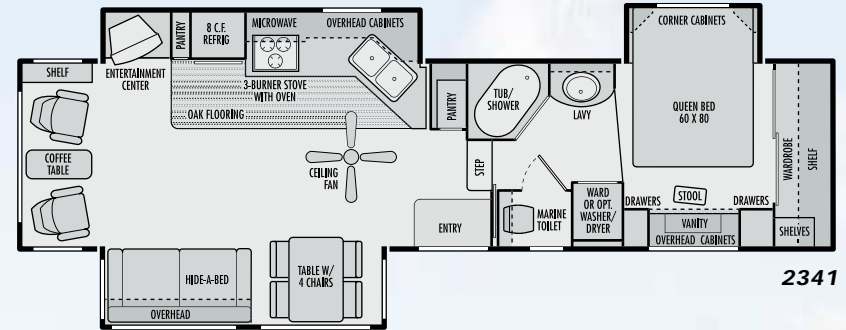
# Sea Breeze



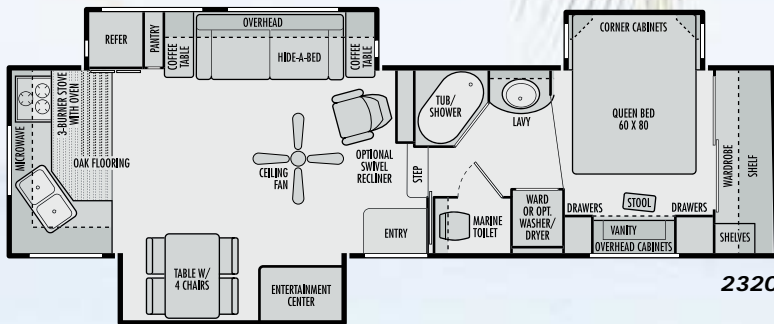
2300



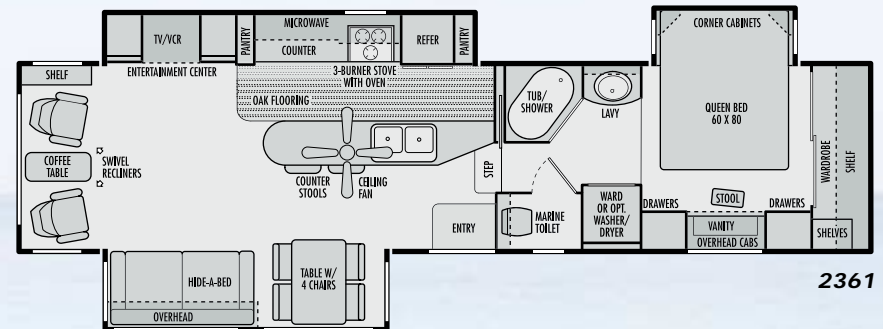
2331



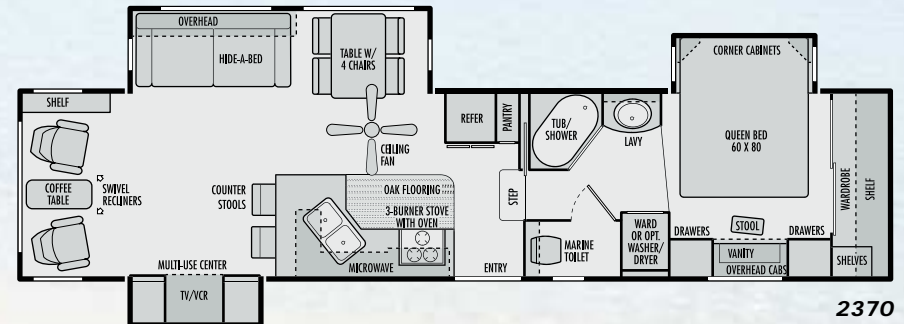
2341



2320



2361



2370



Due to continued product improvement, National R. V., Inc. reserves the right to change materials, colors, specifications and prices at any time without notification. Copyright © 2001 by National R. V., Inc. 09/01

# SEA BREEZE FEATURES & SPECIFICATIONS

## CHASSIS & BODY CONSTRUCTION

12" steel "I" beam main frame  
Steel framed walls with 1" x 1 1/2" tubular steel  
Laminated high gloss Mende® fiberglass walls  
Steel framed EDPM® rubber laminated roof  
Front and rear molded gel-coat fiberglass caps  
Steel framed laminated floor  
Dent resistant Centrex® lower skirting  
Ozite® fabric ceiling  
Fully insulated and heated holding tanks with Centrex® panels  
Stabilizer jacks on rear  
Heavy duty electric front jacks  
Heavy duty independent electric front jacks (2361 and 2370)  
6,000 lb. axles with 12" brakes  
Triple axle (2361 and 2370)  
Shock absorbers  
Spare tire and wheel  
Spare tire storage under unit  
16" wheels and 8 lugs  
Rear aluminum ladder (2300 and 2320)

## APPLIANCES & ACCESSORIES

Large double door Dometic® refrigerator  
Three-burner range with large 21" oven  
GE® SpaceMaker microwave oven with fan and light  
Systems monitor panel  
Two telephone jacks

TV antenna and booster with 12V receptacle and jacks  
27" color TV with remote in living area  
Video switch box  
Stereo VCR with remote  
Home theater surround sound system with CD player  
Wall mounted Sunbeam® hair dryer in bathroom  
Black & Decker® dust buster vacuum cleaner  
Washer/dryer prep

## HEATING VENTS AND AIR CONDITIONER

One 15,000 BTU ducted roof air conditioner with electronic thermostat  
35,000 BTU ducted furnace  
12V roof vent in bathroom  
Skylight in shower

## INTERIORS

Corian® countertops in kitchen  
Solid oak raised panel cabinet doors (upper and lower)  
Solid oak drawer fronts  
Telestrut hardware on overhead cabinet doors  
Ball bearing roller drawer guides  
Laminate tops with designer edge in bathroom  
Laminate tops on night stands in bedroom  
Oak plank floor in kitchen  
Slide-out pantry  
Mini-blinds in kitchen area

Rubbermaid® kitchen waste basket  
Built-in knife holder in kitchen countertop  
Deluxe bar stool (2331)  
Two deluxe bar stools (2361 and 2370)  
Deluxe hide-a-bed sofa  
Deluxe swivel recliner chair (2300)  
Two deluxe swivel recliner chairs (2331, 2361 and 2370)  
Dining table with four chairs  
Accessory table (2320, 2331, 2361 and 2370)  
Day/night shades in living area and bedroom  
Nylon carpet with pad in living area, bedroom and bath  
60" x 80" queen size bed  
Mirrored closet doors  
Color coordinated bedspread, pillows and shams  
Designer wall clock  
Designer white ceiling fan

## WINDOWS, DOORS AND AWNINGS

Living room slide-out with end wall windows  
Slide room topper awning(s)  
Main patio awning with metal cover

## ELECTRICAL SYSTEMS

12V electrical harness with connectors  
45 amp power converter with battery charger  
120V centrally located electrical breaker box

## SAFETY FEATURES

Fire extinguisher  
LP gas detector  
Smoke detector  
120V GFI protected circuit in kitchen, bath and exterior  
Deadbolt lock on entrance door  
Egress windows  
One year complimentary Coach Net® 24-hour roadside assistance

## PLUMBING AND LPG SYSTEMS

Porcelain kitchen sink with single lever faucet  
One-piece fiberglass tub/shower custom made by National RV with skylight  
Glass shower door (n/a 2300)  
Deluxe water flush toilet  
Demand water system with water pump  
10 gallon gas/electric water heater with electric ignition (DSI)  
Water heater by-pass valve  
Pressurized and gravity water fill  
Outside shower  
Two 30 lb. propane tanks with automatic change over  
Systems compartment with easy access to hook-ups  
Heated enclosed holding tanks and valves  
Holding tank rinse system (waste tank only)

## OPTIONAL FEATURES

12 cu. ft. side-by-side refrigerator with icemaker  
Icemaker  
GE® convection microwave oven  
Fan-Tastic® Vent with rain sensor in living area and bedroom  
Water filter in kitchen  
Accessory table (2300)  
Skylight with shade in living area  
Deluxe swivel recliner (2320)  
Fixed booth dinette  
Deluxe porcelain toilet with sprayer  
Stacked combination washer/dryer unit (n/a 2300)  
Combination washer/dryer (2300, 2320 and 2331)  
13" color TV with remote in bedroom  
Radius dual pane tinted safety glass windows  
Battery disconnect switch  
Joey slide-out storage box  
Generator  
Generator prep: Includes gas tank, prewire and CO detector  
11,000 BTU ducted air conditioner (second air conditioner)  
Solar battery charger (5 watt)  
Heavy duty independent electric front jacks (2300, 2320 and 2331)  
Aluminum roof rack  
Rear aluminum ladder (2331, 2361 and 2370)

WEIGHTS	2300	2320	2331	2341	2361	2370
Gross Vehicle Rating	14,000 lbs.	14,000 lbs.	14,000 lbs.	TBD	18,000 lbs.	18,000 lbs.
Gross Axle Rating	12,000 lbs.	12,000 lbs.	12,000 lbs.	TBD	18,000 lbs.	18,000 lbs.
Hitch Weight	2,200 lbs.	2,180 lbs.	2,040 lbs.	TBD	2,200 lbs.	2,600 lbs.
Unloaded Vehicle Weight	10,800 lbs.	11,690 lbs.	11,950 lbs.	TBD	12,950 lbs.	13,100 lbs.
Maximum Carrying Capacity	3,200 lbs.	2,310 lbs.	2,050 lbs.	TBD	5,050 lbs.	4,950 lbs.
MEASUREMENTS	2300	2320	2331	2341	2361	2370
Overall Length	30' 3"	32' 6"	33'	TBD	35' 6"	36' 11"
Overall Height (Inc. Std. A/C)	12' 3"	12' 3"	12' 3"	TBD	12' 3"	12' 3"
Interior Height	84"	84"	84"	TBD	84"	84"
Interior Width	92"	92"	92"	TBD	92"	92"
Exterior Width	96"	96"	96"	TBD	96"	96"
TANK CAPACITIES	2300	2320	2331	2341	2361	2370
Water Heater	10 gal.	10 gal.	10 gal.	10 gal.	10 gal.	10 gal.
Grey Tank #1	50 gal.	50 gal.	50 gal.	50 gal.	50 gal.	50 gal.
Grey Tank #2	50 gal.	50 gal.	50 gal.	50 gal.	50 gal.	50 gal.
Black Tank	50 gal.	50 gal.	50 gal.	50 gal.	50 gal.	50 gal.
Fresh Water Tank	100 gal.	100 gal.	100 gal.	100 gal.	100 gal.	100 gal.
Two LPG Tanks (Wet Cap.)	60 lb.	60 lb.	60 lb.	60 lb.	60 lb.	60 lb.

# Sea Breeze EX

Fabrics



CHEYENNE

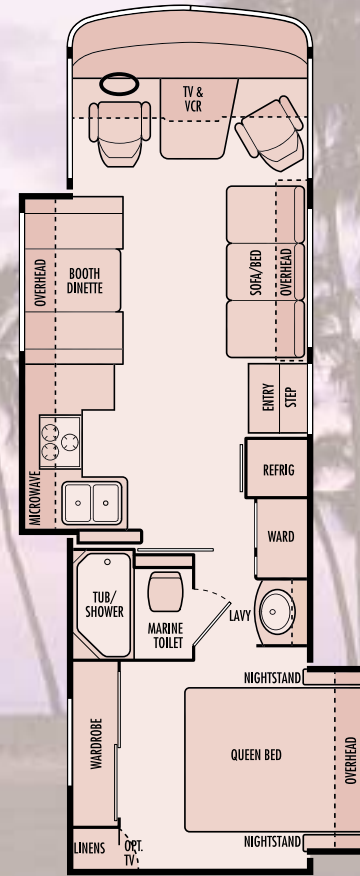


LAGOON

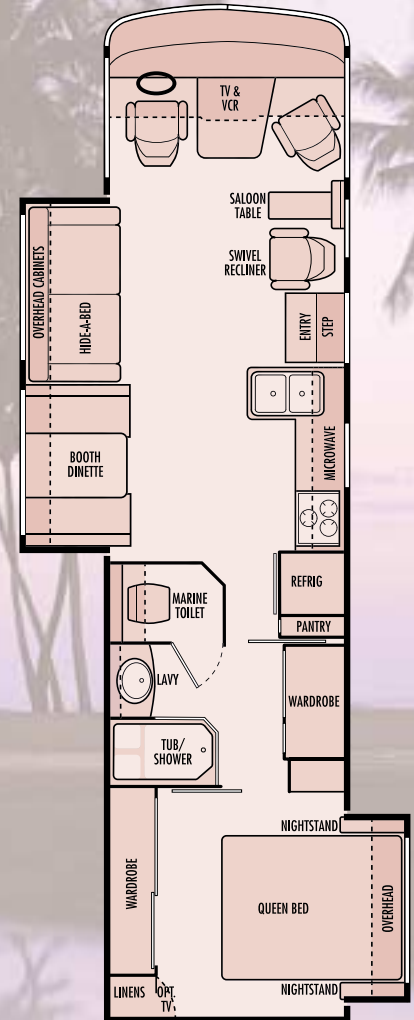
Woods



OAK



8311



8341



Due to continued product improvement, National R. V., Inc. reserves the right to change materials, colors, specifications and prices at any time without notification. Copyright © 2001 by National R. V., Inc. 12/01



SEA BREEZE LX FEATURES & SPECIFICATIONS

BODY CONSTRUCTION

- Duraframe® patented steel sub floor construction
- Steel framed laminated floor
- Steel framed crowned laminated fiberglass roof
- Steel framed laminated fiberglass high gloss walls
- Front and rear molded fiberglass caps
- High impact Centrex® front and rear bumpers
- Full panoramic tinted windshield
- Soft fabric ceiling material
- Electric slide-out room with overhead cabinets (flush floor on lounge slide models only)
- High impact Centrex® exterior storage compartment doors with integrated latches and gas struts
- One-piece rotocast polyethylene storage compartments
- Lighted storage compartments and service area
- Exterior assist handle
- Aluminum rear ladder
- Awning rail/rain gutter with drip spouts
- Spare tire and wheel
- Automotive undercoating
- Custom vinyl exterior graphics

COCKPIT FEATURES

- AM/FM stereo and CD with four speakers
- Driver and passenger map light with switch on dash
- Custom dash with full gauge package
- Convenience tray
- Audible turn signals
- Pantographic windshield wipers
- Power steering
- Cruise control
- Tilt steering wheel
- Rear vision system with built-in microphone
- Overhead dash fans (two speed)
- Power heated rear view mirrors with convex
- Driver and passenger recliner seats
- Passenger work station with 12V/120V receptacle and telephone jack in console
- Aviation style sun visors
- Hydraulic leveling jacks with dash mounted controls
- Generator hour meter and auxiliary switch on dash
- Wraparound privacy curtain with easy reach wand

APPLIANCES & ACCESSORIES

- 8 cu. ft. double door refer
- Three burner cook top with flush mount Corian® range cover
- Over-the-counter microwave oven with built-in range hood, lights and fan
- Systems monitor panel
- Cable TV hook-up and telephone jack
- TV antenna and booster
- 19" color TV with remote control in living area and bedroom
- Video control box
- Hair dryer with nightlight (mounted in bathroom)

INTERIORS

Throughout Coach

- Solid oak cabinet doors and drawer fronts
- Telestrut hardware on overhead doors and positive catches on others
- Ball bearing roller drawer guides

Living Area

- 74" Wonder-Bed sleeper sofa (8311) or 68" hide-a-bed sofa (8341)
- Deluxe rocker recliner with swivel base (8341)
- Booth dinette with slide-out storage drawers
- Deluxe nylon carpet and pad
- Day/night shades with designer valances
- Solid oak raised panel cabinet doors in overheads

Kitchen Area

- Corian® kitchen countertop with Corian® flush mount stove cover
- Sink cover (wood cutting block)
- Porcelain sink with single lever faucet
- Waste basket
- Armstrong® vinyl flooring
- Venetian mini-blinds and valances (8341)

Bath Area

- Armstrong® vinyl flooring
- Decorative opaque shower glass etching
- Flat panel doors
- Laminate bathroom lavy top with woodgrain edge
- Medicine cabinet
- Towel bars

Bedroom Area

- Deluxe nylon carpet and pad
- Venetian mini-blinds and valances
- Flat panel doors
- Wardrobe with mirrored sliding doors
- Color coordinated bedspread, pillows and shams
- Radius padded headboard
- Slide-out queen bed with under bed storage bay
- Laminate top nightstands with woodgrain edge

ELECTRICAL SYSTEMS & LIGHTS

- 50 Amp MagneTek® power converter and charger
- 50 Amp 120V distribution panel and cord
- Generac® 5.5 kW generator
- Two 6V deep cycle house batteries (217 amp/hour)
- Battery disconnect switch for house batteries
- Porch light with interior switch
- 110V patio receptacle
- Incandescent lights in ceiling
- Adjustable reading lights
- Designer lights in living and bedroom areas
- Cosmetic light in bathroom
- GFI protected electrical circuit
- Entry step light

PLUMBING & LPG SYSTEMS

Coach Exterior

- Heated systems compartment with easy access to hook-ups
- Demand water system and water pump
- Holding tank rinse system (black tank only)
- Winterization antifreeze inlet to pump
- Outside shower
- Water heater by-pass valve
- Pressurized water fill
- Six gallon LPG water heater with electric ignition (DSI)

Kitchen Area

- Decorative kitchen and bath faucets

Bath Area

- One-piece fiberglass tub/shower
- Glass shower door and enclosure

SAFETY FEATURES

- Extra large double convex rear view mirrors
- Driver and passenger three point lap and shoulder seatbelts
- Deadbolt lock on entry door
- Fire extinguisher
- Smoke, carbon monoxide (CO) and LPG detectors
- Egress window(s)

WINDOWS, DOORS & AWNINGS

- Radius tinted safety glass windows (sliding windows in living area and jalousie windows in kitchen and bedroom)
- Radius entrance door with clear glass, shade and screen door
- Electric double entry step with light
- Slide-out rooms topper awnings\*
- Tinted skylight in bathroom (8341)

HEATING, VENTS & AIR CONDITIONING

- Thermostatically controlled dual 13,500 BTU ducted roof A/Cs
- 35,000 BTU electronic ignition furnace
- Ducted heating system
- 12V Fan-Tastic® Vent with wall thermostat and rain sensor in galley/living area
- 12V roof exhaust fan in bathroom
- Dash automotive heating and A/C system with defroster

OPTIONAL FEATURES

Coach Exterior

- Dual pane windows
- Patio awning with metal cover\*

Cockpit Area

- JVC® VCR with remote control
- JVC® DVD player (replaces VCR)
- Ten disc CD changer

Living Area

- Dining table with two wooden and two folding chairs (8341)

Kitchen Area

- 21" high output three-burner range with oven (surface mounted)
- Convection microwave oven with carousel, built-in light and fan
- 12V Fan-Tastic® Vent with wall thermostat and rain sensor in galley/living area

CHASSIS SPECIFICATIONS

	FORD
<b>Chassis</b>	<b>Ford® Super Duty (22,000 GWR)</b>
Tires	Goodyear® RV 245/70R 19.5F
Wheels	19.5X6, 8-lug steel, SS liner
Brakes	Hydro-Boost, 4-wheel disc ABS
Drive Axle gear Ratio	5.38:1
Alternator	115 Amp
Chassis Batteries	(1) 750 CCA
Shock Absorbers	Tuned Bilstein®
Fuel Capacity	75 gallon
Hitch Capacity	5,000 lb. Class III
Chassis Warranty	3 years/36,000 miles
<b>Engine</b>	<b>Ford® Triton V-10</b>
Displacement	6.8 liters (415 cu. in.)
Peak Horsepower	310 HP @ 4,250 RPM
Peak Torque	425 lb.-ft. @ 3,250 RPM
Engine Warranty	3 year/36,000 miles
<b>Transmission</b>	<b>Ford® 4R100</b>
Transmission Type	4-speed automatic overdrive
Transmission Warranty	3 years/36,000 miles

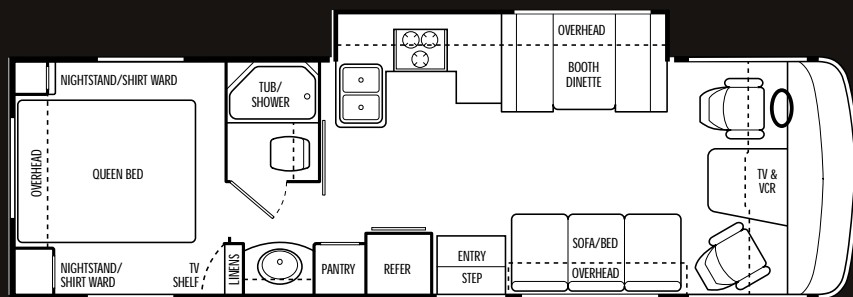
WEIGHTS (POUNDS)	8311	8341
Gross Vehicle Weight Rating	22,000 lbs.	22,000 lbs.
Gross Combined Weight Rating	26,000 lbs.	26,000 lbs.
Front Gross Axle Weight Rating	7,000 lbs.	7,000 lbs.
Rear Gross Axle Weight Rating	15,000 lbs.	15,000 lbs.
Unloaded Vehicle Weight	15,840 lbs.	16,820 lbs.
Maximum Carrying Capacity	6,160 lbs.	5,180 lbs.
Cargo Carrying Capacity	4,851 lbs.	3,680 lbs.
MEASUREMENTS	8311	8341
Overall Length	31' 8"	34' 11"
Overall Height (Road Height)	11' 8"	11' 8"
Interior Height	79½"	79½"
Interior Width	98½"	98½"
Exterior Width	102"	102"
Wheelbase	208"	228"
TANK CAPACITIES	8311	8341
Water Heater (Gas/Electric)	6 gal.	6 gal.
Gray Tank	60 gal.	60 gal.
Black Tank	50 gal.	50 gal.
Fresh Water Tank(s)	100 gal.	100 gal.
LPG Tank (Volume W.C.)	24.2 gal.	24.2 gal.

\*Not available on CSA units

Due to continued product improvement. National R. V., Inc. reserves the right to change materials, colors, specifications and prices at any time without notification. Copyright © 2001 by National R. V., Inc. 12/01

# Sea Breeze SCOUT

two thousand two



SB300

**NATIONAL RV**  
[www.nationalrv.com](http://www.nationalrv.com)

3411 North Perris Blvd. Perris, CA 92571  
909.943.6007

Due to continued product improvement, National R. V., Inc. reserves the right to change materials, colors, specifications and prices at any time without notification. Copyright © 2001 by National R. V., Inc. 05/01



## SEA BREEZE SCOUT FEATURES & SPECIFICATIONS

### Body Construction

- Duraframe® Steel Sub Floor Construction with Pass-Through Storage
- Steel Framed Floor
- Steel Framed Crowned Ducted Fiberglass Roof
- Laminated Steel Framed Gel-Coat Fiberglass Exterior Walls
- Molded High Gloss Fiberglass Front Cap with Integrated Bumper
- Molded High Gloss Fiberglass Rear Cap with ABS Centrex® Rear Bumper and Rear Fuel Fill
- Soft Touch Ceiling Material
- Electric Slide-Out Room with Overhead Cabinets
- Custom Vinyl Exterior Graphics
- Molded Fiberglass Exterior Compartment Doors, Insulated with Integrated Single Paddle Latch and Gas Strut
- Steel Framed Exterior Compartments with Insulated Bottoms and Compartment Liner
- Steel Front Bulkhead
- Fiberglass Stepwell and Battery Storage Compartment
- Rear Mud Flaps
- Awning Rail with Drain Spouts
- Automotive Undercoating As Required
- Patio Awning (17 ft.)

### Chassis, Engine & Suspension

- Ford Triton V10, 415 Cubic Inch Displacement (6.8 Liter) 310 HP @ 4,250 RPM, 425 lbs.-ft. Torque @ 3,250 RPM
- Electronic Fuel Injection Gasoline Engine
- Transmission: 4r100 Automatic Transmission 4 Speed Overdrive with Electronic Control
- 75 Gallon Fuel Capacity
- Front Suspension: GAWR: 7,000 lbs. with Stabilizer Bar and Shocks
- Rear Suspension: Multi Leaf Springs, GAWR: 11,000 lbs. with Stabilizer Bar and Shocks
- GVWR: 18,000 lbs.
- Rear Axle: Dana® 80, 5.38:1 Gear Ratio
- Stainless Steel Wheel Liners with Inner Wheel Valve Extensions
- Radial Tires 245/70R x 19.5f
- 130 AMP Alternator
- 5,000 lb. Class III Hitch Receiver and Electrical Connector

### Cockpit Features

- AM/FM Stereo with CD Player and Four Speakers
- 12 Volt Outlet in Dash
- Auxiliary Start Switch
- Generator Hour Meter, Start/Stop Switch in Dash
- Front Privacy Drapes with User Friendly Wand Levers

- Side Console with Automotive Fuse Block and Coach Level Indicator
- Driver and Passenger Map Lights
- Audible Turn Signals
- Pantographic Windshield
- Pantographic Windshield Wipers with Intermittent Switch
- Power Steering
- Electronic Cruise Control
- Tilt Steering Wheel
- Driver and Passenger Recliner Seats with Swivel Bases
- 12 Volt, 110 Volt and Phone Receptacle in Passenger Side Console
- Flip-Down Acrylic Sun Visors
- Low Mount, (2 Head) Power Heated Exterior Rear View Mirrors
- Contemporary Dash Design with Passenger Pull-Out Drawer
- Convenience Tray with Cup Holders

### Appliances & Accessories

- 6 Cu. Ft. Two Way Refrigerator
- 21" High Output Three-Burner Range with Oven
- Over-the-Counter Mounted Microwave with Built-In Range Hood and Lights
- TV Antenna and 12 Volt Booster with 110 Volt Receptacle
- 19" Color TV with Remote Control in Living Room
- TV/VCR Switch Box
- Cable TV Hook-Up and Telephone Jacks

### Interiors

- Solid Praxis Oak Square Raised Panel Upper Cabinet Doors
- Overhead Storage Doors with Catches
- Ball Bearing Roller Drawer Guides
- Laminate Kitchen Countertops with Back Splash and Wood Cutting Block Sink Cover
- Decorative Border in Kitchen above Back and Side Splashes
- Trash Container in Kitchen
- Deep Pull-Out Storage Drawers in Kitchen
- Laminate Lavy Top
- Stainless Steel Double Sink (Surface Mount)
- Bathroom Mirror
- Towel Bar(s) in Bathroom
- 60" x 76" Queen Bed
- Bedspread and Shams with Pillows
- Off-Set Shirt Wardrobes
- Off-Set Nightstands with Laminate Tops
- Wonder-Bed Sofa with Designer Pillows
- Storage under Lift-Up Bed
- Swivel Chair with Seat Belt

- Nylon Carpeting and Pad in Bedroom and Living Areas
- Vinyl Flooring in Kitchen and Bathroom
- Mini-Blinds, Valances and Lambrequins in Living Room and Bedroom
- Mini Blinds and Valance in Kitchen
- Interior Wall Vinyl

### Electrical System & Lights

- 30 Amp 120 Volt Distribution Panel and Cord
- Easy Access 12 Volt Fuse Block in Luggage Compartment
- Generac® 5.0 kW Generator
- Dual 6 Volt Deep Cycle Auxiliary Batteries
- Battery Disconnect Switch
- Porch Light
- Patio Receptacle inside Luggage Compartment
- Entry Step Light
- Three Water Pump Switches (Kitchen, Bath and Service/Dump Station Bay)
- Cosmetic Light in Bathroom (3-Light)
- Recessed Controls Center in Hallway
- Adjustable Reading Lights above Sofa

### Plumbing & LPG Systems

- Service/Dump Station Compartment
- Demand Water System and Shur-Flo® Water Pump
- 6-Gallon LPG Water Heater with Electronic Ignition (DSI)
- Water Heater By-Pass Valve
- Pressurized Water Fill and Water Distribution System with Pressure Regulator
- Black Tank Flush-Out System
- One-Piece Fiberglass Tub and Shower
- Clear Glass Shower Enclosure
- Marine Toilet with Foot Controls
- Heated Systems Compartment with Easy Access to Hook-Ups
- Heated Tank Compartments with Return Air
- Outside Shower
- Single-Lever Kitchen Faucet
- Decorative Bath Faucet

### Safety Features

- Fire Extinguisher
- Deadbolt Lock on Entrance Door
- 120 Volt GFI Protected Circuit in Kitchen, Bath and Exterior
- LPG Detector
- Smoke Detector
- Carbon Monoxide Detector
- Driver and Passenger 3-Point Seat Belts
- Egress Window(s)
- Chrome Plated Exterior Grab Handle

### Windows, Doors & Awnings

- Radius Windows with Tinted Safety Glass
- Rear Bedroom Picture Window
- Power Double Step Entrance with Light
- Radius Entrance Door with Clear Glass and Roller-Shade
- Entry Screen Door and Anti-Skid Steps
- Living Room Slide-Out Topper

### Heating, Vents & Air Conditioning

- 15,000 BTU Ducted Roof A/C at Living Room
- Dash Heating and A/C System with Defroster
- Ducted Electronic Ignition Furnace
- 12 Volt Roof Vent in Bath

### Options

- Attic Fan with Thermostat Control
- Max Air Package: 5.5 Generac® Generator, 13,500 BTU and 11,000 BTU Bedroom A/C with 50 AMP Service
- Hydraulic Leveling Jacks (4-Point)
- VCR
- 13" Color TV with Remote in Bedroom
- Kitchen Counter Top Laminate Extension
- 8 Cu. Ft. Refrigerator
- 8 Cu. Ft. Refrigerator with Ice Maker
- Pleated Day/Night Shades in Living and Bedroom Areas
- Dining Table with Two Wooden and Two Folding Chairs
- Ladder
- Back Up Camera/Monitor

### Weights (lbs.) SB300

Gross Vehicle Weight Rating	18,000
Gross Combined Weight Rating	23,000
Front Gross Axle Weight Rating	7,000
Rear Gross Axle Weight Rating	11,000
Unloaded Vehicle Weight	15,000
Maximum Carrying Capacity	3,000

### Measurements SB300

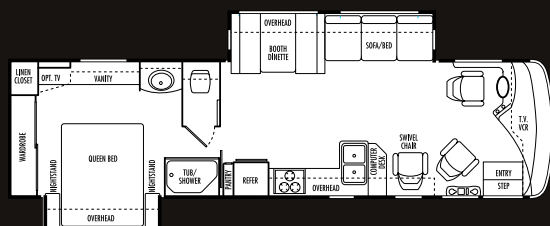
Wheelbase	208"
Overall Length	30' 11"
Overall Height (Road)	11' 9"
Interior Height	79 1/4"
Interior Width	98 1/4"
Exterior Width	102"

### Tank Capacities (gal.) SB300

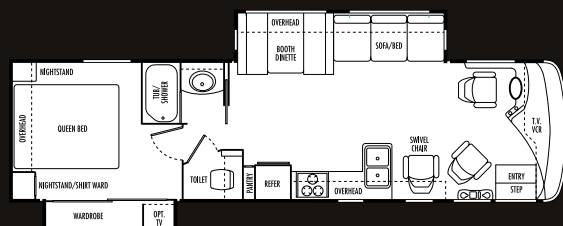
Water Heater	6
Grey Tank	40
Black Tank	40
Fresh Water Tank(s)	60
LPG Tank (Wet Capacity)	24.2

# Sea Breeze BUS

two thousand two



SB340D



SB341D

**NATIONAL RV**  
[www.nationalrv.com](http://www.nationalrv.com)

3411 North Perris Blvd. Perris, CA 92571  
 909.943.6007

Due to continued product improvement, National R. V., Inc. reserves the right to change materials, colors, specifications and prices at any time without notification. Copyright © 2001 by National R. V., Inc. 05/01

## SEA BREEZE BUS FEATURES & SPECIFICATIONS

### Body Construction

- Duraframe® Steel Sub Floor Construction with Pass-Through Storage
- Steel Framed Floor
- Steel Framed Crowned Laminated Fiberglass Roof
- Laminated Steel Framed Gel-Coat Fiberglass Exterior Walls
- Molded High Gloss Fiberglass (2-pc) Front Cap/Bumper
- Molded High Gloss Fiberglass (1-pc) Rear Cap/Bumper
- Soft Touch Ceiling Material
- Electric Slide-Out Room(s)
- Custom Vinyl Exterior Graphics
- Molded Fiberglass Insulated Exterior Compartment Doors with Paddle Latches and Gas Struts
- Steel Framed, Insulated Compartment Floors with Trunk Liner (Not Sides)
- Steel Front Bulkhead
- Automotive Undercoating As Required

### Chassis, Engine & Suspension

- Spartan® Summit 2000 Series Chassis
- Cummins® ISB Electronic 5.9 Liter Diesel Engine with 260 HP
- Wheelbase: 208"
- Torque: 550 ft./lbs. @ 1,600 RPM
- Allison® 1000 Series 5 Speed Automatic with Overdrive and Lock-Up Torque Converter
- Morse® T-Handle Shifter
- 100 Gallon Fuel Capacity
- Leece-Neville® 160 Amp Alternator
- Rear Axle Ratio: 4.63:1
- Full Air Suspension with Bilstein® Tuned Gas Shock Absorbers
- TRW TAS 40 Internal Hydraulic Assisted Power Steering Gear
- Stainless Steel Wheel Simulators with Valve Extensions
- Air Over Hydraulic Brakes
- Goodyear® Tires 245/75 R22.5 G159
- Engine Intake Air Heater
- Midland Pure Air Plus Air Dryer
- Farr Air Cleaner
- Engine Mounted Fuel/Water Separator
- Remote Mounted Air Filter Restriction Indicator
- Front GAWR: 8,500 lbs.
- Rear GAWR: 13,500 lbs.
- GVWR: 22,000 lbs.
- Rear and Driver Side Front Mud Flaps
- 5,000 lb. Class III Trailer Hitch and 6-Point Connector

### Cockpit Features

- Passenger Side Console/Convenience Tray with Cup Holders
- Electronic Tuned AM/FM CD Stereo and Four Speakers
- Driver and Passenger Map Lights
- Pantographic Windshield Wipers with Intermittent Switch
- Power Controlled Heated Exterior Mirrors

- Power Steering
- Electronic Cruise Control
- Douglas Tilt and Telescopic Steering Column
- 18" Vinyl Padded Steering Wheel
- Stereo/TV Switch
- Auxiliary Start Switch
- Generator Hour Meter with Start and Stop Switch on Dash
- Flip-Down Acrylic Sun Visors
- Driver and Passenger Recliner Seats with Swivel Bases
- 12 Volt 110 Volt Phone Receptacles in Passenger Side Console
- Driver's Convenience Tray with Cup Holders
- Centrex® Dash and Drive Side Console

### Appliances & Accessories

- 8 Cu. Ft. Two Way Refrigerator
- 21" High Output Three-Burner Range with Oven
- Systems Monitor Panel
- Overhead Cabinet Mounted Microwave
- TV Antenna and 12 Volt Booster with 110 Volt Receptacle and TV Jack(s)
- 27" Color TV with Remote Control in Living Room
- Cable TV Hook-Up and Telephone Jacks

### Interiors

- Praxis Oak Cabinet Paneling
- Solid Wood Square Raised Panel Cabinet Doors (Praxis Oak) on Upper Cabinets
- Side-Opening Overhead Storage Doors
- Catches on All Storage Doors
- Solid Wood Drawer Faces with Dado-Joint Construction
- Praxis Oak Finish Face Frame Cabinetry
- Ball Bearing Roller Drawer Guides
- Corian® Kitchen Countertop with Back Splash and Wood Cutting Block Sink Cover
- Decorative Vinyl Border above Kitchen Back and Side Splashes
- Trash Container in Kitchen
- Pull-Out Pantry (Next to Refrigerator)
- Laminated Lavy Top with Vinyl Molding Edge
- Framed Picture on Bath Wall (In Lounge Area)
- Large Porcelain Double Sink (Undermount)
- Medicine Cabinet with Mirror above Lavy Sink in Bathroom
- Towel Ring Next to Lavy Sink
- Towel Bars on Back of Bathroom Door
- 60" x 80" Queen Bed
- Bedspread and Shams with Pillows
- Wardrobe with Mirrored Sliding Doors
- Swivel Recliner with Seat Belt
- Booth Dinette with Doors
- Nylon Carpeting and Pad in Bedroom and Living Areas
- Vinyl Flooring in Kitchen and Bath
- Recessed Controls Center
- Mini-Blinds and Lambrequins in Living Room and Bedroom
- 72" Wonder-bed Sofa with Designer Pillows

- Nightstands with Laminate Tops with Woodgrain Edge Molding
- Mini-Blinds and Valances in Kitchen
- Interior Wall Vinyl

### Electrical System & Lights

- 30 Amp 120 Volt Distribution Panel and Cord
- Easy Access 12 Volt Fuse Panel Located in Rear Passenger Side Compartment
- LPG Generac® 6.6 kW Generator
- Two Auxiliary 6 Volt Batteries
- Battery Disconnect Switch
- Porch Light
- Patio Receptacle in Luggage Box
- Three Water Pump Switches (Kitchen, Bath and Dump Station)
- Cosmetic Light in Bathroom (3-Light)
- Incandescent Lights in Ceiling
- Fluorescent Light in Galley
- Storage Compartment Lights

### Plumbing & LPG Systems

- Demand Water System and Shur-Flo® Water Pump
- 6-Gallon LPG Water Heater with Electronic Ignition (DSI)
- Water Heater By-Pass Valve
- Pressured Water Fill and Water Distribution System with Pressure Regulator
- Black Tank Flush System
- Outside Shower Located in Service/Dump Station Compartment
- One-Piece Fiberglass Tub and Shower
- Clear Glass Shower Enclosure
- Thetford® Marine Toilet with Foot Controls
- Single Lever Kitchen Faucet
- Decorative Lavy Faucet
- Heated Systems Compartment with Easy Access Hook-Ups
- Heated Holding and Fresh Water Tank Compartments with Return Air

### Safety Features

- Fire Extinguisher
- Deadbolt Lock on Entrance Door
- 120 Volt GFI Protected Circuit (Kitchen, Bath and Exterior)
- LPG Detector
- Smoke Detector
- Carbon Monoxide Detector
- Driver and Passenger 3-Point Seat Belts (Lap and Shoulder)
- Egress Window(s)
- Exterior Grab Handle
- Interior Grab Handle

### Windows, Doors & Awnings

- 15 Foot Patio Awning
- Radius Dual Pane Windows with 22% Tinted Safety Glass
- Power Double Step Entrance with Light

- Sliding Windows in Living Area, Kitchen, Bedroom and Driving Area
- Radius Entrance Door with Clear Glass and Roller Shade
- Entry Screen Door and Anti-Skid Steps

### Heating, Vents & Air Conditioning

- 15,000 BTU Low Profile Ducted Roof A/C with Thermostat
- Dash Heating and A/C System with Defroster
- 35,000 BTU Ducted Electronic Ignition Furnace with Thermostat
- 12 Volt Roof Vent in Bath
- 12 Volt Attic Fan with Wall Thermostat in Living Area

### Options

- Living Room Slide-Out Awning Topper
- Bedroom Slide-Out Awning Topper
- 4-Point Hydraulic Leveling Jacks
- VCR
- DVD Player
- 10-Disc CD Changer
- 19" Color TV with Remote Control in Bedroom
- Kitchen Counter Top Extension
- 8 Cu. Ft. Refrigerator with Ice Maker
- "Max Air Package": Dual Low-Profile Ducted 13,500 BTU Roof A/C's with 50 AMP Service
- Dining Table with Two Wooden and Two Folding Chairs
- Two Dash Fans
- Pleated Day and Night Shades in Living Area and Bedroom
- 6 Gallon Gas/Electric Hot Water Heater
- Diesel 7.5 kW Generac® Generator
- CSA Package
- Rear Back-Up Camera and Monitor
- Aluminum Rear Ladder

Weights (lbs.)	SB340D	SB341D
Gross Vehicle Weight Rating	22,000	22,000
Gross Combined Weight Rating	26,000	26,000
Front Gross Axle Weight Rating	8,500	8,500
Rear Gross Axle Weight Rating	13,500	13,500
Unloaded Vehicle Weight	19,310	TBD
Maximum Carrying Capacity	2,690	TBD

Measurements	SB340D	SB341D
Wheelbase	208"	208"
Overall Length	34' 10"	34' 10"
Overall Height (Road)	11' 9"	11' 9"
Interior Height	79 1/4"	79 1/4"
Interior Width	98 1/4"	98 1/4"
Exterior Width	102"	102"

Tank Capacities (gal.)	SB340D	SB341D
Water Heater	6	6
Grey Tank	60	60
Black Tank	45	45
Fresh Water Tank(s)	84	84
LPG Tank (Wet Capacity)	69	69



For more of everything  
National RV Inc. related  
join us at [NRVCLUB.com](http://NRVCLUB.com)



National RV Club (NRVC) is not affiliated with any other club or organization.  
NRVC has no relationship with the defunct National R.V. Inc. or National R.V. Holdings.  
NRVC has no relationship with REV Group, REV Recreation Group, or their motor home brands.