

A Class C
motor home
that grew
up with
Class A's.





Stretch out.

The Minnie Winnie's big, comfortable interior can get even bigger thanks to the hydraulically powered front slideroom. Large interior overhead cabinets slide out with the room for easy access to storage.

Stitchcraft custom furniture, day/night pleated shades and custom interior lighting add coziness and enhance privacy. Thermostat-controlled, floor-ducted heating and ceiling-ducted air conditioning deliver consistent climate control. Dual-glazed thermo-insulated windows are available to make things even cozier.

The available roof air heat pump takes the chill off cool mornings without turning on the furnace.

30V-Loganbrook with Concert Cherry

Class C convenience, Class A comfort.

As the premier Class C offering in the Winnebago lineup, Minnie Winnie is the total package of drivability and user-friendly comfort. You'll find that it's loaded with premium amenities you'd normally expect to find only in a Class A motor home. Standard features include the Sleep Number® Bed by Select Comfort,™ a 27" stereo TV, BenchMark™ Full Comfort Dinette, a 5,000-lb. drawbar and a one-piece radiused fiberglass roof, to name just a few.

You'll notice many other key features in this brochure. We hope it helps you pick the Minnie Winnie that's perfect for you.



A wonderful place to retire.

Minnie Winnie's 30V bedroom slideout area has a large wardrobe with spacious drawers and closet space, plus a desk/vanity with even more storage. For long-lasting beauty, the doors and drawers feature a catalyzed finish typically found in the cabinetry of finer homes. The queen-size bed easily lifts up to access another storage area below.



What's your number?

The queen-size Sleep Number Bed by Select Comfort is another Winnebago Industries exclusive. Using the hand-held remotes on each side of the bed, you can quickly and independently adjust the firmness level of the mattress to your ideal level of comfort and support... your Sleep Number, which is Your Key to a Perfect Night's Sleep.



Driver friendly.

The well-designed cockpit has controls positioned for maximum driver convenience and can be enhanced with the available gray burl dash appliqué (shown). All gauges, switches and controls are full-size and easy to reach—including standard power windows and door locks. An auxiliary start switch lets you start the engine in case the chassis battery loses its charge. In the console, there's a handy storage tray, coin holder, oversized cupholders and a large tip-out storage compartment. Driver and passenger-side airbags are standard.



Cook up a storm.

Prepare great meals with ease in Minnie Winnie's full-featured galley. It comes complete with a large double-door refrigerator/freezer with available icemaker. A standard three-burner Amana® range/oven^d and over-the-range 24" microwave provide cooking flexibility. Solid-surface countertops and a Moen® single-control faucet are also standard. The available water purification system features a separate faucet. The molded, recessed, composite sink is stain resistant and easy to clean. The sink cover and a flip-up countertop extension provide additional work space.



The key to it all.

Minnie Winnie makes use of the KeyOne™ System. Just one key opens most vehicle doors, including compartment doors. What could be simpler?



A bigger picture.

Minnie Winnie's exterior mirrors feature a large field of vision—so important when parking or changing lanes. The electric remote feature makes adjustments easy and includes a defrost function, too.



A clear rearview.

For added convenience when backing up, select the available rearview monitor system. It includes a 6" screen mounted between the visors on an adjustable swivel base. The system also includes one-way audio.



This radio's a "wow."

The RV Radio® features large control knobs, easy-to-operate buttons, an AM/FM stereo cassette/CD player and the built-in weather band feature provides weather updates at the touch of a button. The radio power switch allows you to choose between chassis or house batteries to power your RV Radio. A compact multi-disc changer is also available.



Sit back, relax.

The hoop-base lounge chair is a comfy swivel glider. Best of all, it can be positioned in your favorite spot when you're not traveling. Standard on the 27P and 31C.



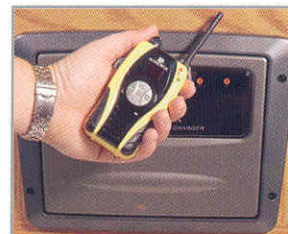
A theater on wheels.

The standard front entertainment center features convenient storage and a 27" stereo TV with video selection system. Enjoy movies, music and TV even more with the Deluxe Sound System. It includes the five-channel QSURROUND™ sound amplifier system and speakers. A stereo DVD/VCR combo is also available. Select the available 300-watt inverter, which provides 110-volt AC power to the TV when shoreline or generator power is not available.



Stay in touch.

For communication in the campground or peace of mind on day trips, the four available two-way radios recharge from the coach's house batteries at their built-in charging station. The nickel-metal hydride batteries provide 15 hours of standby and 90 minutes of talk time on a single charge.



Bed and breakfast.

The BenchMark Full Comfort Dinette is a Winnebago Industries exclusive and features an innerspring cushioned seat to provide you with the feel and comfort of residential furniture. Flip up the seats to access the large storage space or fold down the table to quickly convert the dinette into a comfy bed.

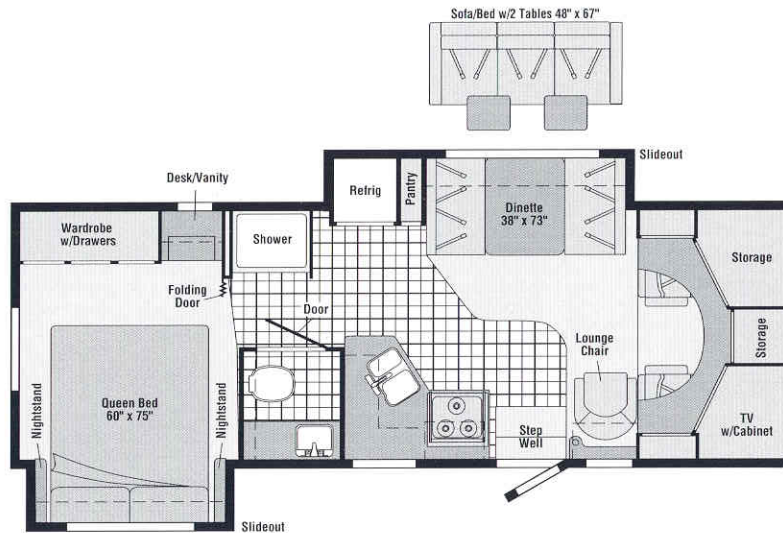


The outside story.

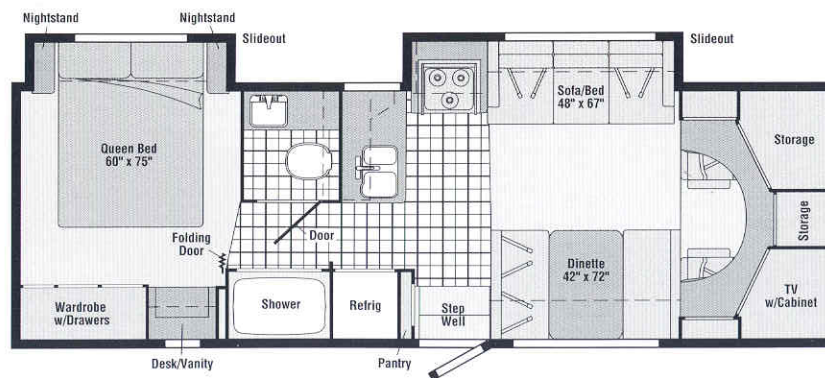
Minnie Winnie's one-piece fiberglass sidewall is amazingly tough—typical for Winnebago Industries' design. Fiberglass running boards are a standard Minnie Winnie feature and help keep the sidewalls clean. Also available: rear auxiliary air springs, to improve the quality of your ride, and stainless steel wheel liners, to resist corrosion over the long haul.

FLOORPLANS

INTERIORS



Model 27P



Model 30V



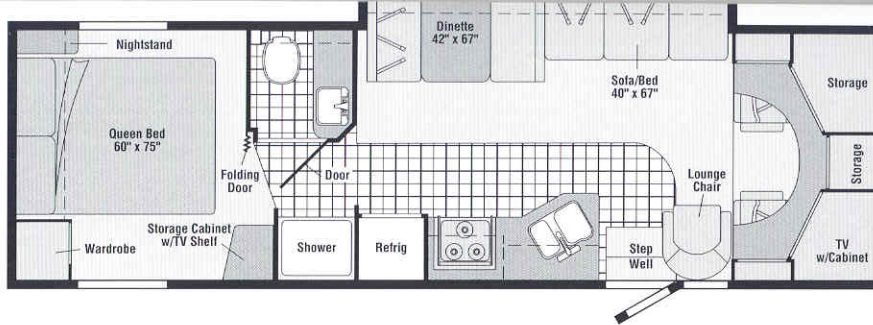
Cotswald Green



Loganbrook



Model 31C



Vinyl Floorcovering



Seat Belts

Note: Dimensions shown are for sleeping space only and may vary due to styling differences. Dashed lines denote overhead storage areas.



Bring the party outside.

Minnie Winnie can be equipped with the available exterior entertainment center that includes AM/FM stereo with antenna, CD player, 12-volt DC receptacle, TV jack, 110-volt outlet, speakers and a removable table.



Get hitched.

The 5,000-lb. capacity and 350-lb. tongue weight hitch come standard.⁹



Easier access.

Say goodbye to wrestling cords and hoses through small holes. The QuickPort™ Service Connection Hatch makes hookups a snap. And the compartment is enclosed to protect hookups from dirt and road grime.



Check it out.

Check vital functions like tank levels, LP gas and battery power with the flush-mounted monitor panel, located in the galley. A battery disconnect switch located in the entry way lets you disconnect your house batteries for storage.



Rain, rain go away.

Minnie Winnie's innovative awning rail, which has a built-in rain gutter, channels the water to the front and rear of the coach. This helps keep you dry and so does the available vinyl patio awning.^d



StoreMore. A lot more.

Extend your storage space and your living space with Winnebago Industries' exclusive StoreMore® slideout system. The 27P and 31C feature front exterior storage compartments that extend along with the slideout to make loading and unloading easier anytime. There's plenty of room here for oversized or odd-shaped items.



More power to you.

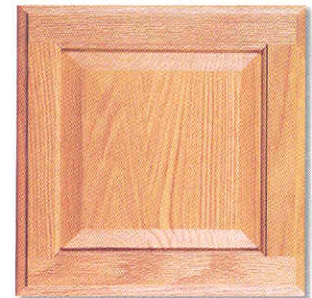
And more efficiency, too, thanks to this available, high-quality Onan® MicroQuiet™ generator. It supplies 4,000-watts of power to Minnie Winnie's 110-volt wiring system. An automatic changeover switch means no more fumbling with plug-ins to enjoy generator power.



Truffle



Concert Cherry



Portsmouth Oak

2004 Winnebago Minnie Winnie® Specifications

	27P	30V	31C
Length	27'11"	30'2"	31'4"
Exterior Height w/A/C ^a	11'7"	11'7"	11'5"
Exterior Width ^b	8'5.5"	8'5.5"	8'5.5"
Exterior Storage ^c (cu. ft.)	50.1	46.2 ^f	73.6
Interior Height	6'8"	6'8"	6'8"
Interior Width	8'	8'	8'
Fresh Water Capacity w/Heater ^d (gal.)	36	41	41
Holding Tank Capacity – Black/Gray (gal.)	42/35	35/38	35/38
LP Capacity ^e (gal.)	18	18	18
Fuel Capacity (gal.)	55	55	55
GCWR (lbs.) ^g	20,000	20,000	20,000
GVWR (lbs.)	14,050	14,050	14,050
GAWR – Front (lbs.)	4,600	4,600	4,600
GAWR – Rear (lbs.)	9,450	9,450	9,450
Wheelbase	190"	205"	216"

Standard - S Optional - O

27P 30V 31C

AUTOMOTIVE/CHASSIS

Chassis – Ford® E450 Super-Duty, 6.8L V10 SOHC Triton® engine, 306-hp, automatic 4-speed overdrive transmission, 4-wheel anti-lock disc brakes, 130-amp. alternator, dual airbags	S	S	S
Tire spare, Tire Tool wrench, Trailer Hitch 5,000-lbs. drawbar/350-lbs. maximum vertical tongue weight & wiring, ^g Wheel Covers (4)	S	S	S
Air Springs auxiliary rear, Wheel Liners stainless steel (4)	O	O	O

CAB AREA & DRIVER CONVENIENCES

Beverage Holder, Cab Seats (fabric) w/3-point adjustable seat belts, armrest, lumbar support fixed, multi-adjustable slide/recline, Cigarette Lighter/12-Volt Powerpoint, Cruise Control, Curtain cab divider, Domelights, Floor Mats (rubber) driver & passenger, Hood Release, Power Door Locks, Power Cab Windows, Steering Wheel tilt w/power assist, Sunvisors (2), Trim Panels driver & passenger doors (chassis supplied) w/map pocket	S	S	S
Cab Seats leather insert w/vinyl surround	O	O	O
Instrument Panel gray burl appliqué	O	O	O
Monitor System rearview w/single camera & 1-way audio, Audiovox®	O	O	O

ENTERTAINMENT

RV-RADIO (Cab) AM/FM stereo cassette/CD player w/weather band, speakers (4), Radio Power Switch main/auxiliary, Satellite System Ready, Telephone input & interior jack, video selection system, TV 27" Color AC Stereo w/remote, video selection system, RCA® TV Enhancement Package antenna (amplified), 12-volt powerpoint(s), interior jack(s), coax wiring, cable input	S	S	S
DVD/VCR combo stereo w/remote, RCA	O	O	O
Entertainment Center (Exterior) AM/FM radio w/CD player & remote, DC receptacle, AC duplex receptacle, TV jack, radio antenna, speakers (2)	O	O	O

27P 30V 31C

BEDROOM

Bed queen, Sleep Number, w/underbed storage, bedspread, pillow shams, throw pillow, Lights decorative wall lamp(s), Lights reading, Wall Border, Wardrobe w/drawers & mirrored door(s) (door-activated light on 27P & 30V), Nightstand(s)	S	S	S
Headboard			S
Shirt Closet w/2 drawers			S
Vanity Cabinet w/flip-up countertop, mirror, folding chair, Powerpoint 12-volt	S	S	






EXTERIOR

Awning Rails w/rain gutters, Door entrance w/separate screen door, deadbolt lock, Entrance Door Steps double, electric w/door jamb switch, Graphics Package Warm Silver Metallic w/green graphics or Warm Silver Metallic w/blue graphics, Ladder, Light porch w/interior switch, Mirrors plate mount, electric/remote w/defrost, Mudflaps rear, Receptacle AC duplex, Running Boards fiberglass, Sidewall Skin one-piece smooth fiberglass, Storage Compartments valance panels, trunk liner, ^d gas cylinders, TriMark® KeyOne System, paddle latch, lights	S	S	S
Awning patio	O	O	O

SYSTEMS

Air Conditioner (Roof) 14,800 BTU, ceiling-ducted w/wall thermostat, Auxiliary Start Circuit, Batteries (Coach) (2) deep-cycle, group 24, Battery (Coach) disconnect system, Battery Charge Control automatic dual, Drain water tank, Electrical Distribution System AC & DC breaker panels, 45-amp. converter/charger, Furnace 30,000 BTU, low profile,	S	S	S
---	---	---	---

lockable compartment, removable TV table			
Radios (4) two-way	O	O	O
Satellite Dish Antenna RV digital, elevation sensing unit	O	O	O
Sound System Deluxe, w/5 Channel QSurround Sound, amplifier, speaker system	O	O	O
INTERIOR			
Ceiling fabric, Clock , Cupholder(s) , ^d Lights ceiling, incandescent w/wall switches, Light halogen (over front TV cabinet), Lights reading, Powerpoint 12-volt, Shades day/night pleated (lounge, dinette, bedroom), mini blinds (galley)	S	S	S
Light swivel, above lounge chair		S	
Mirror wall		S	S
Picture		S	S
Windows dual-glazed/thermo-insulated	O	O	O
CABINETRY			
Portsmouth Oak stile-and-rail construction, raised-panel inserts on upper doors	S	S	S
Concert Cherry stile-and-rail construction, raised-panel inserts on upper doors	O	O	O
COUNTERTOPS			
Solid Surface	S	S	S
FLOORCOVERING			
Carpeting w/pad, Vinyl bath, galley & stepwell area	S	S	S
FURNITURE			
BenchMark ® Dinette access to storage below	S	S	S
Chair lounge, hoop-base (swivel/glider) (must be secure when traveling)	S		S
Sofa w/throw pillow		S	S
Sofa w/2 tables & throw pillow	O		
GALLEY			
Countertop flip-up extension, Faucet single-control, Microwave	S	S	S
Oven w/range fan, vented, Range ^d sealed three-burner w/oven, Amana, Refrigerator/Freezer large double-door, Norcold® Sink double-bowl molded w/sink covers, Wall Border , Wastepaper Basket			
Pantry	S	S	
Coffeemaker Krups®	O	O	O
Refrigerator/Freezer large double-door w/icemaker, Norcold	O	O	O
Water Purification w/separate faucet	O	O	O
BATH			
Cabinet lavatory, Cabinet medicine, Faucet (lavatory) dual-control, Faucet (shower) dual-control w/flexible showerhead, Light shower, Makeup Lights (3) , Magazine Rack , Mirror w/frame, Shower w/removable clothes rod, Shower Door textured glass, Shower Skylight , Sink rectangular, Tissue Holder , Toilet w/foot-pedal flush, Towel Bar , Towel Rack 3-rod, mounted to door	S	S	S
Towel Ring	S	S	

Generator w/water pump, water heater, generator hourmeter gauge, ^d generator start/stop switch, ^d holding tank levels, LP tank level, water heater light(s), water heater switch, water pump switch, water tank level, Holding Tank Flushing System black tank only, Power Cord 30-amp. 25', Roof Vent ^d nonpowered, lounge, bedroom, Roof Vent powered, bath, Service Center (Electrical) cable input, power cord, telephone input, Tank holding, heated compartment, Tank LP, permanent mount w/gauge, Water Heater 6-gallon, electronic ignition, LP gas, Water System Winterization Package water heater bypass valve & siphon tube, Water Hookup city, Water Pump demand, Water Tank Fill gravity, w/locking door			
Generator ^d 4,000-watt, Onan MicroQuiet, gas	O	O	O
Home Comfort Plus Package ^d roof A/C heat pump, auxiliary automotive heater, nonpowered insulated roof vent (bedroom), powered insulated ventilator fans (lounge, bath)	O	O	O
Inverter DC/AC, 300-watt	O	O	O
Roof Vent powered ventilator fan, ^d lounge	O	O	O
Solar Panel ^d 10-watt w/battery charger	O	O	O
Water Heater 6-gallon, electronic ignition, 110 vac/LP gas w/Motoraid, includes energy management system	O	O	O
Service Compartment (Drainage/Water) pressurized city water hookup/tank diverter fill, drainage valves, exterior wash station w/pump switch, 10' sewer hose, holding tank flushing system,  QuickPort Service Connection Hatch	S		S
Service Compartment (Drainage) drainage valves, 10' sewer hose,  QuickPort Service Connection Hatch		S	
Service Compartment (Water) air chucks, ^d pressurized city water hookup/tank diverter fill, drainage valves, exterior wash station w/pump switch, holding tank flushing system,  QuickPort Service Connection Hatch		S	
SLIDEOUT			
 Slideout Room dinette/pantry/refrigerator w/slideroom cover, Slideout Room bed w/slideroom cover		S	
Slideout Room sofa/range w/slideroom cover, Slideout Room bed w/slideroom cover			S
 Slideout Room sofa/dinette w/slideroom cover			S
SAFETY			
Airbags driver & passenger, Assist Bar interior, Assist Handle exterior, Bumpers front & rear, Detectors/Alarms LP leak, smoke, carbon monoxide, Fire Extinguisher 10 B.C., Ground Fault Interrupter , Light center high-mount brake lamp, Light(s) courtesy w/wall switch(es), Seat Belts cab, 3-point, Seat Belts lap (in selected areas), Window escape	S	S	S
WARRANTY ^h			
12-month/15,000-mile basic limited warranty , ⁱ	S	S	S
36-month/36,000-mile warranty on structure , ⁱ			
10-year limited parts & labor warranty on roof skin ⁱ			

- a The height of each model is based on the curb weight of a typically equipped unit on the standard chassis. The actual height of your vehicle may vary by as much as 2" depending on chassis or equipment variations.
- b Minnie Winnie floorplans feature a wide-body design—over 96". In making your purchase decision, you should be aware that some states restrict access on some or all state roads to 96" in body width. Before making your purchase decision, you should confirm the road usage laws in the states of interest to you.
- c Your motor home's load capacity is designated by weight, not by volume, so you cannot necessarily use all available space when loading your motor home.
- d Not all items available in combination. See dealer for details.

- e Capacities shown are tank manufacturer's listed water capacity (W.C.). Actual filled LP capacity is 80% of listing due to overfilling prevention device on tank.
- f Measurements are based on the most recent information available. See your dealer for updated specifications.
- g Actual towing capacity is dependent on your particular loading and towing circumstances, which includes the GVWR, GAWR and GCWR, as well as adequate trailer brakes. Please refer to your vehicle's operator's manual for further towing information.
- h See separate chassis warranty details provided in owner's packet.
- i See your dealer for complete warranty information.
- Winnebago Industries' continuing program of product improvement makes specifications, equipment, model availability and prices subject to change without notice. Comparisons to other motor homes are based on the most recent information available.

Not all motor homes are created equal.

As you take a closer look, you'll see that there is much more to the Winnebago Minnie Winnie than a long list of standard features and compelling floorplans. Beneath it all you'll find a SuperStructure® foundation of strength and durability, and Winnebago Industries' recognized service and warranty support.



We are committed to service.

We back our motor homes with the best after-the-sale service in the industry.

- 12-month/15,000-mile basic limited warranty
- 36-month/36,000-mile warranty on structure
- Standard 10-year limited parts-and-labor roof skin warranty
- Complimentary 24-hour Roadside Assistance Program
- TripSaver Fast Track Parts. TripSaver guarantees that in-stock warranty parts ship directly to your dealer within 24 hours
- Nationwide dealer service network

Certified quality.

Recreation Vehicle Dealer Association members annually rate RV manufacturers on the quality of their products, and on their sales and service support. Winnebago Industries has achieved the coveted Quality Circle Award every year since its inception, the only major motor home manufacturer to do so.

Learn more about what sets Winnebago Industries apart.

Ask your dealer for this guide. It will help you learn what makes Winnebago Industries motor homes distinctly superior to other brands.

Warning: Joining WIT has been known to cause excessive fun.

Winnebago-Itasca Travelers (WIT) is a club for owners of Winnebago Industries motor homes. WIT is a great way to meet people and offers you:

- Caravans and rallies
- Local and state group activities
- Benefits for RVers



©2003 Winnebago Industries, Inc., Forest City, IA 50436. Printed in USA.

Seat belts are your most important hookup. Always buckle up.

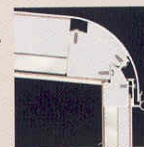
NYSE listing: WGO

Visit us at www.winnebagoind.com

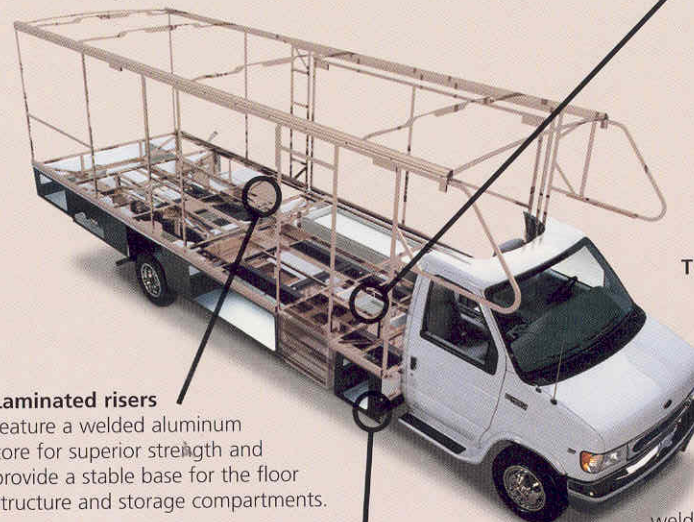


is the term given to Winnebago Industries' structural motor home design and construction. Rather than a single component, it is the culmination of design integration that incorporates steel and aluminum substructures; composite design laminated floor risers; interlocking joint technology; and Thermo-Panel® floor, roof and sidewalls to form a high-strength, durable vehicle body.

Interlocking joint construction utilizes advanced extruded aluminum structural components to create integrated floor-to-sidewall and sidewall-to-roof joints. This design effectively distributes the weight of the walls and roof, making a stronger and more durable body than competitor designs that rely on screws to carry the weight.



The foundation substructure assembly is precision-aligned to maximize strength and cross-coach support as well as durability.



Laminated risers feature a welded aluminum core for superior strength and provide a stable base for the floor structure and storage compartments.

Critical steel components are treated using an advanced electrodeposition coating process that provides superior corrosion protection.

The sidewalls are the result of Winnebago Industries invention and perfection of Thermo-Panel manufacturing. Their composite construction combines a durable exterior panel with welded aluminum support substructures. The substructures are embedded in a high-density block foam insulation core to create a strong, durable, yet lightweight sidewall.



One-year-old competitor's rubber roof



One-year-old Winnebago Industries fiberglass roof

Built to a higher standard.

The Minnie Winnie features a crowned, one-piece fiberglass roof skin backed with a 10-year limited parts-and-labor roof skin warranty. Fiberglass offers superior strength, attractiveness and durability over rubber roofs found on many competitive models. Over time, rubber roofs are susceptible to chalking, streaking and degradation, and have less puncture and tear resistance than fiberglass.