



# *Patriot '96*





Beaver Motor Coaches has spent 30 years building its reputation for unmatched quality and luxury. They achieved this level of excellence by setting the highest standards - then exceeding them with each successive coach. Discerning coach buyers expect uncompromising attention to detail from Beaver. But in the 1996 Patriot they also find something else: the most advanced technology ever in a production motor coach.

From the advanced electronics in the Magnum IntelliDrive™ System to the exotic composite materials used in its construction, the 1996 Patriot is a technological marvel. Backed by a multi-million dollar investment in state-of-the-art facilities, the Beaver engineers have positioned the company at the forefront of modern coach design - poised to



lead the way into the Twenty-First century.

You can see the benefits in the mirror-smooth side-walls and

ultra-rigid caps. You can feel the advantages in the sure, stable handling and fluid ride. Someday all motorhomes may perform as well as the Patriot - but until then it has no equal.

And while the technology is ultra-modern, the craftsmanship remains timeless. The cabinets are still built one at a time in our own shop, the hardwoods grain-matched and hand-rubbed. The tile work and carpet, leatherwork and upholstery match the quality found in the best residences.

The workmanship is impeccable, the attention to detail is remarkable, as a generation of coach enthusiasts has learned to expect from Beaver Motor Coaches.



*Beaver Motor Coaches is a division of SMC Corporation -  
America's Most Successful Luxury Coach Builder*









## ***Indulge Your Senses***

Step into the 1996 Patriot, and step into another world of luxury. At the first glance you'll recognize the impeccable taste that Beaver is known for: the wood, fabrics and carpet come together in a rich tapestry of color and texture. Look closer and you'll see the careful craftsmanship - the hand-rubbed cabinets, the perfectly upholstered furniture. And finally, feel the supple Leathermate™ recliner and run your fingers across the seamless Fountainhead™ counters. The more you experience the Beaver passion for quality, the more you love the Patriot.

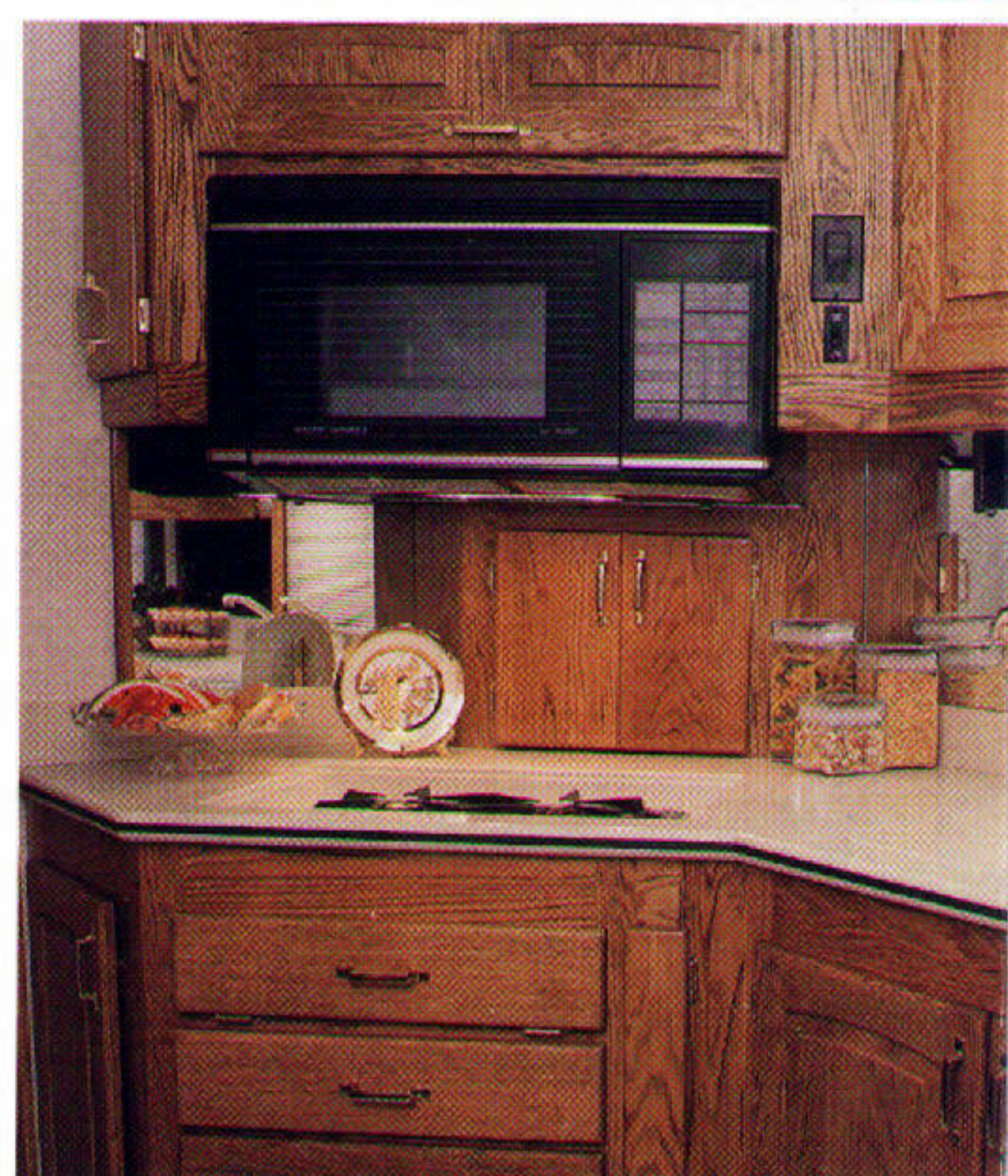
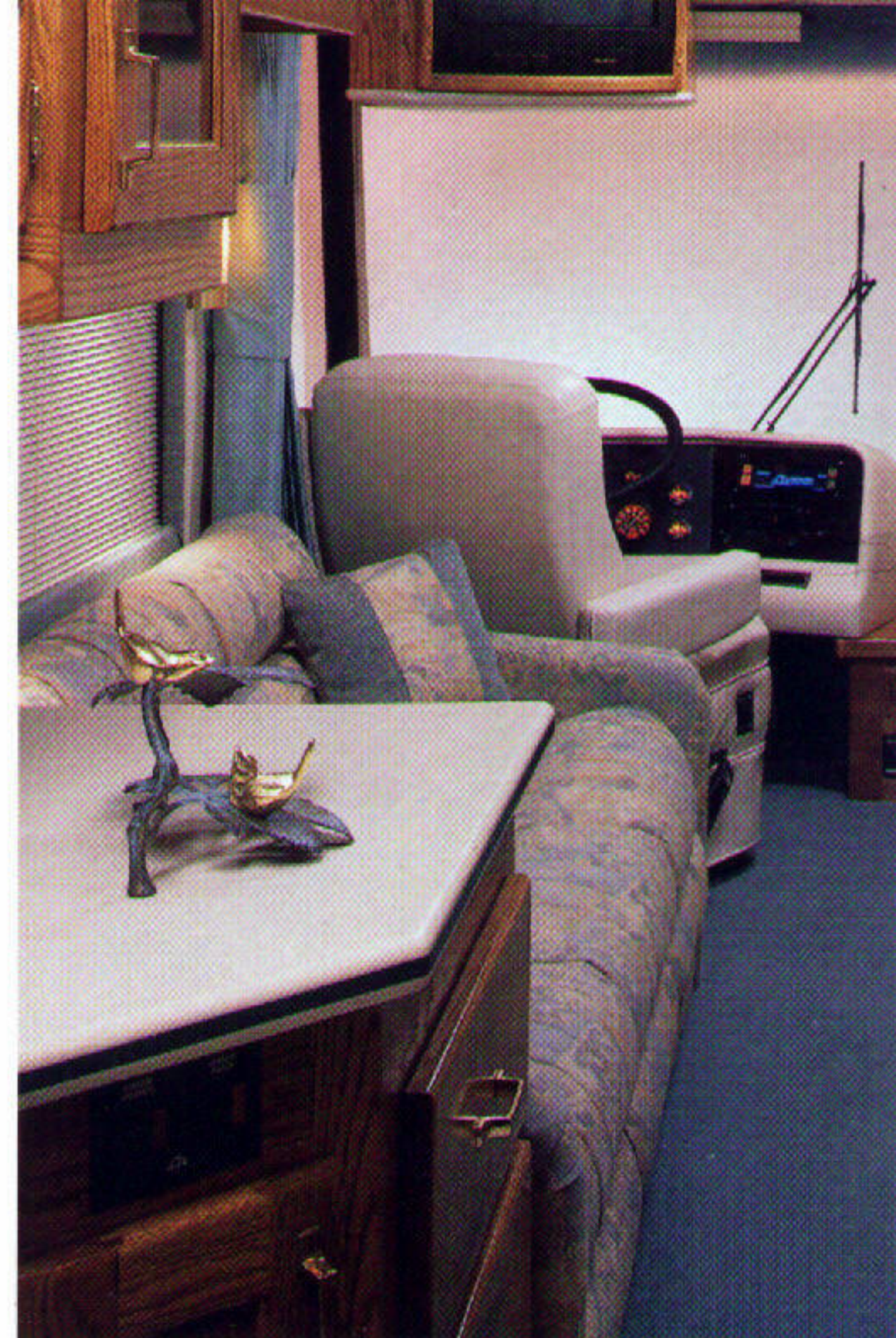
The Beaver buyers search the country for the finest materials to outfit the Patriot. They purchase the highest quality 12" tile, solid wood planking, and plush residential carpet for the floors. Hardwoods are brought in from across the country, including the beautiful rift-cut oak, which is specially milled for SMC and can't be found in other coaches. A great coach begins with the finest materials.

## ***Consider the Smart Design***

The Beaver Patriot is also a very sensible coach. There is plenty of storage, both inside and out. Inside you'll discover large cedar-lined wardrobes and voluminous pantries and cupboards. Outside you'll discover a huge basement - heated, insulated and virtually unobstructed. What other coaches can't carry, the Patriot stores with ease.

You won't find more intelligently designed floor plans than in the Patriot. The galleys are spacious and thoughtfully laid out, able to accommodate the most demanding chef. The living area allows you to easily host surprisingly large groups comfortably. Even the dining table expands for four, and the matching upholstered folding chairs is a standard feature.

The Patriot designers even considered your privacy in the commode - they designed most plans with a private toilet area. That's the kind of foresight experienced RV'ers have learned to expect from Beaver.

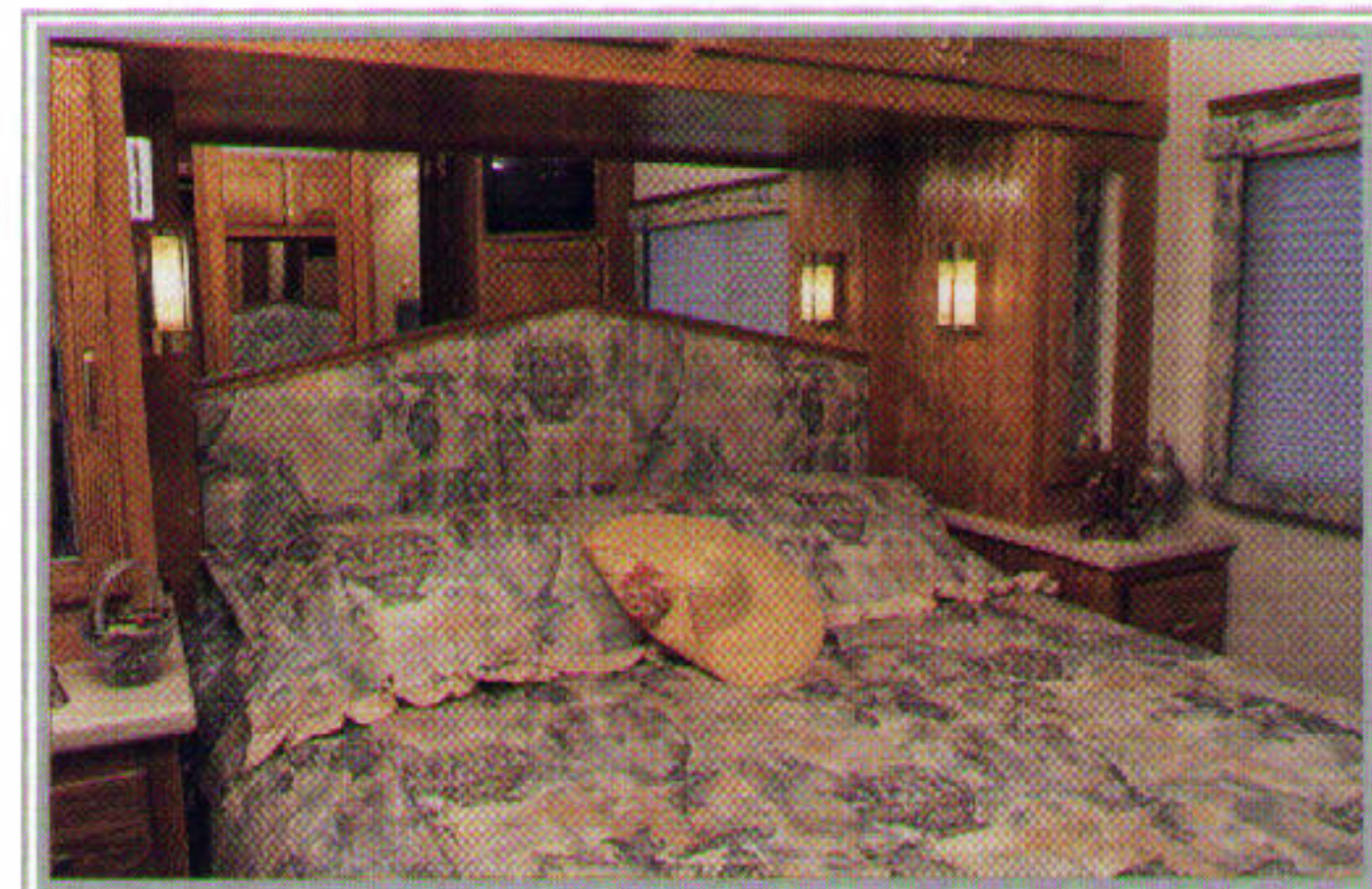






### ***Relax and Enjoy***

Isn't that why you buy a motor coach! To relax in the setting of your choice and enjoy all the luxuries a coach can provide. The Patriot provides a full array of entertainment possibilities. The stereo system is the finest you can find in a coach in this class: a Delco system with optional 10-pack CD changer and a specially designed speaker arrangement. For video, the Patriot includes two 20" televisions and a VCR with remote controls for ease of viewing and convenient placement in the living and bedroom areas.



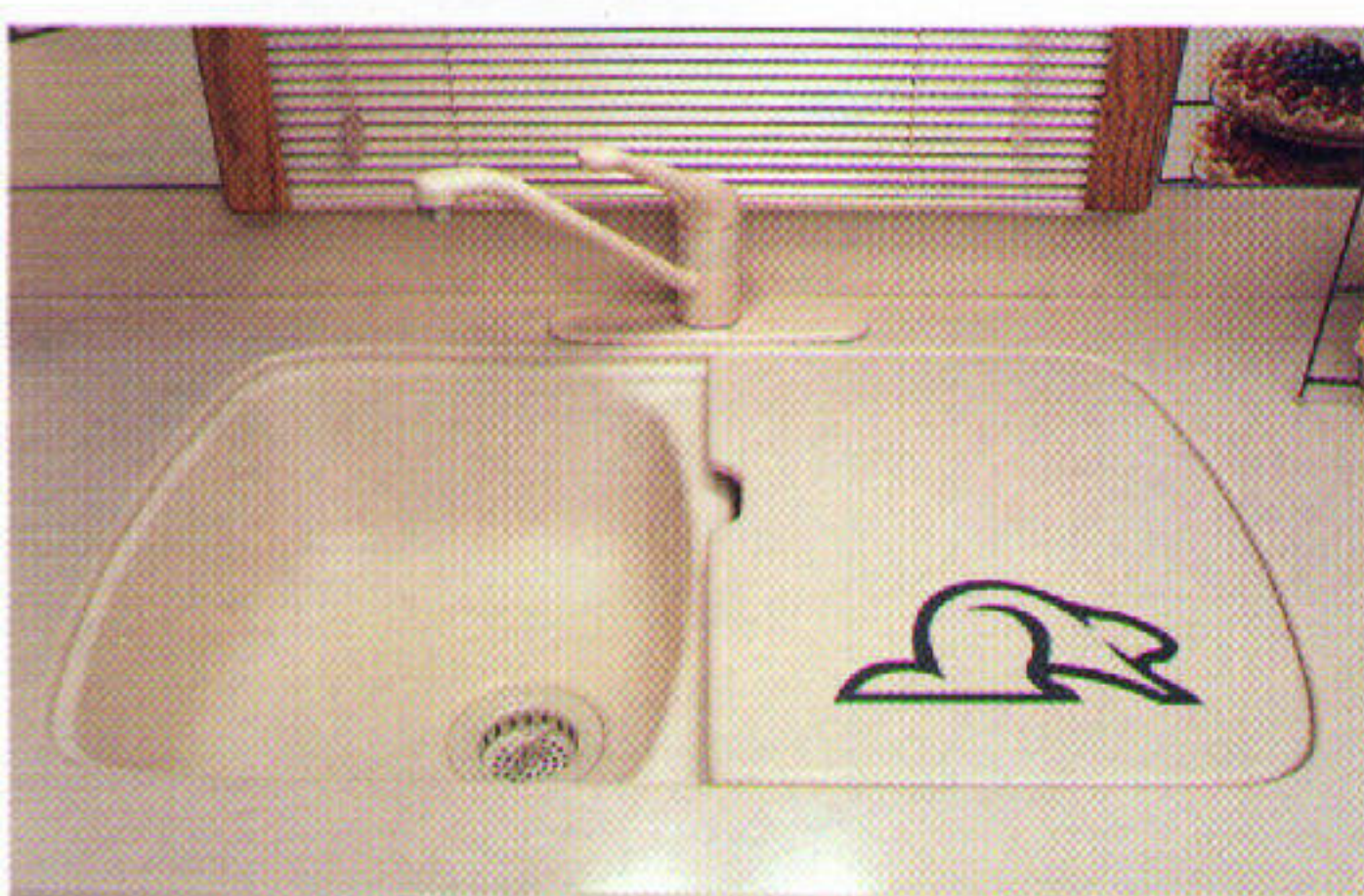
### ***Even Maintenance is Easy***

Here's where the Patriot designers really shine. The house service center is conveniently laid out for easy hookups and dumping, while every routine chassis service item is accessible from a single panel - Magnum's unique chassis center. Gauges, fluids . . . even the air lines are accessible here, a feature that is only available on a Magnum chassis. Spend less time hassling with hookups and maintenance, and more time enjoying the lifestyle the Patriot makes possible.

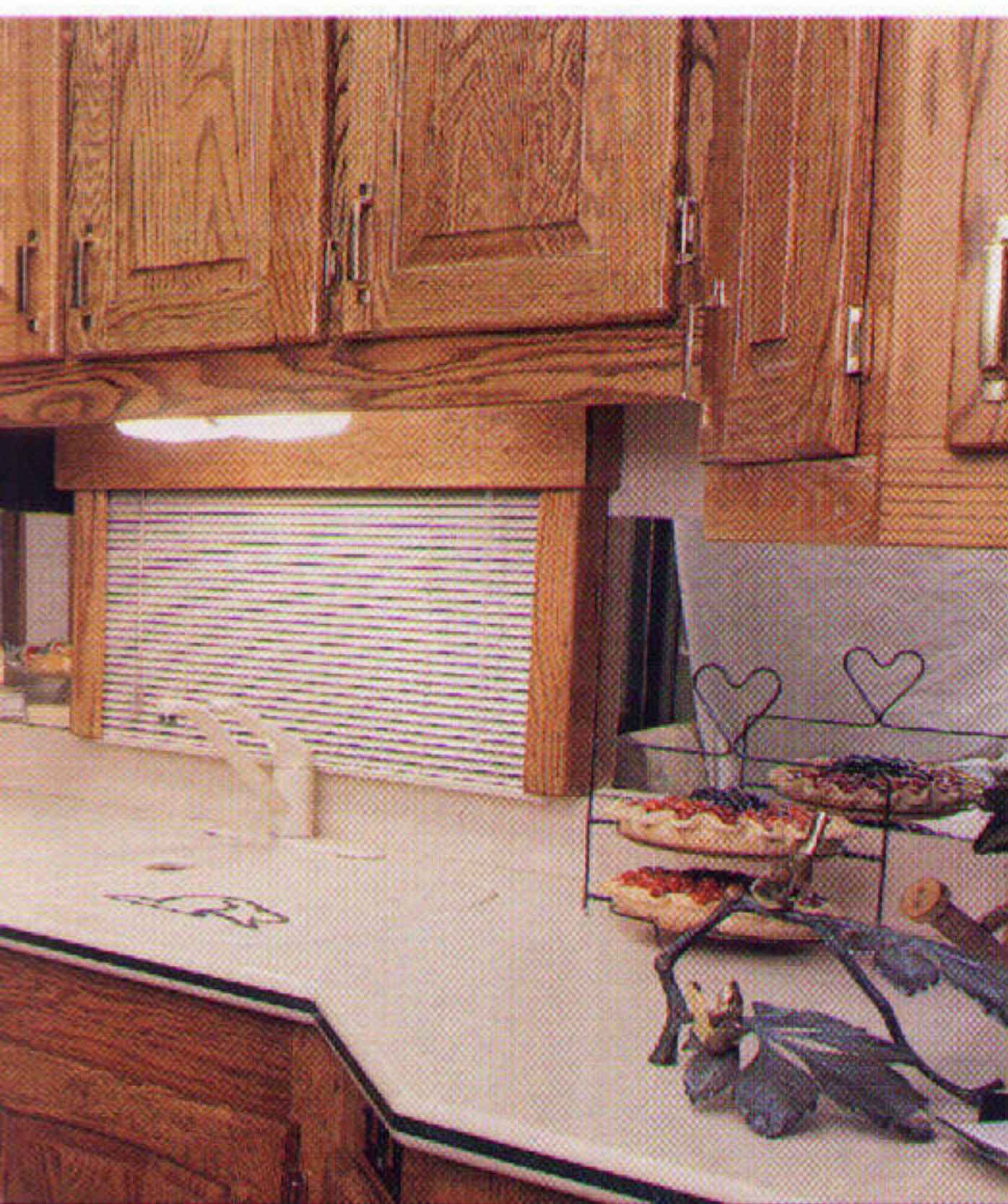


### ***Join the Club***

As a Beaver owner, you become a member of one of America's most active RV clubs, the Beaver Ambassadors Club. The B.A.C. holds rallies and events across the nation, including one rally held right at the Beaver factory in Bend, Oregon. This "Homecoming Rally" gives you a unique opportunity to meet the people who built your motorhome and discover more about



your coach. In addition to comradery and entertainment, you'll also find Beaver service personnel at these rallies, providing the type of goodwill service that has earned Beaver a tremendous reputation for customer satisfaction.

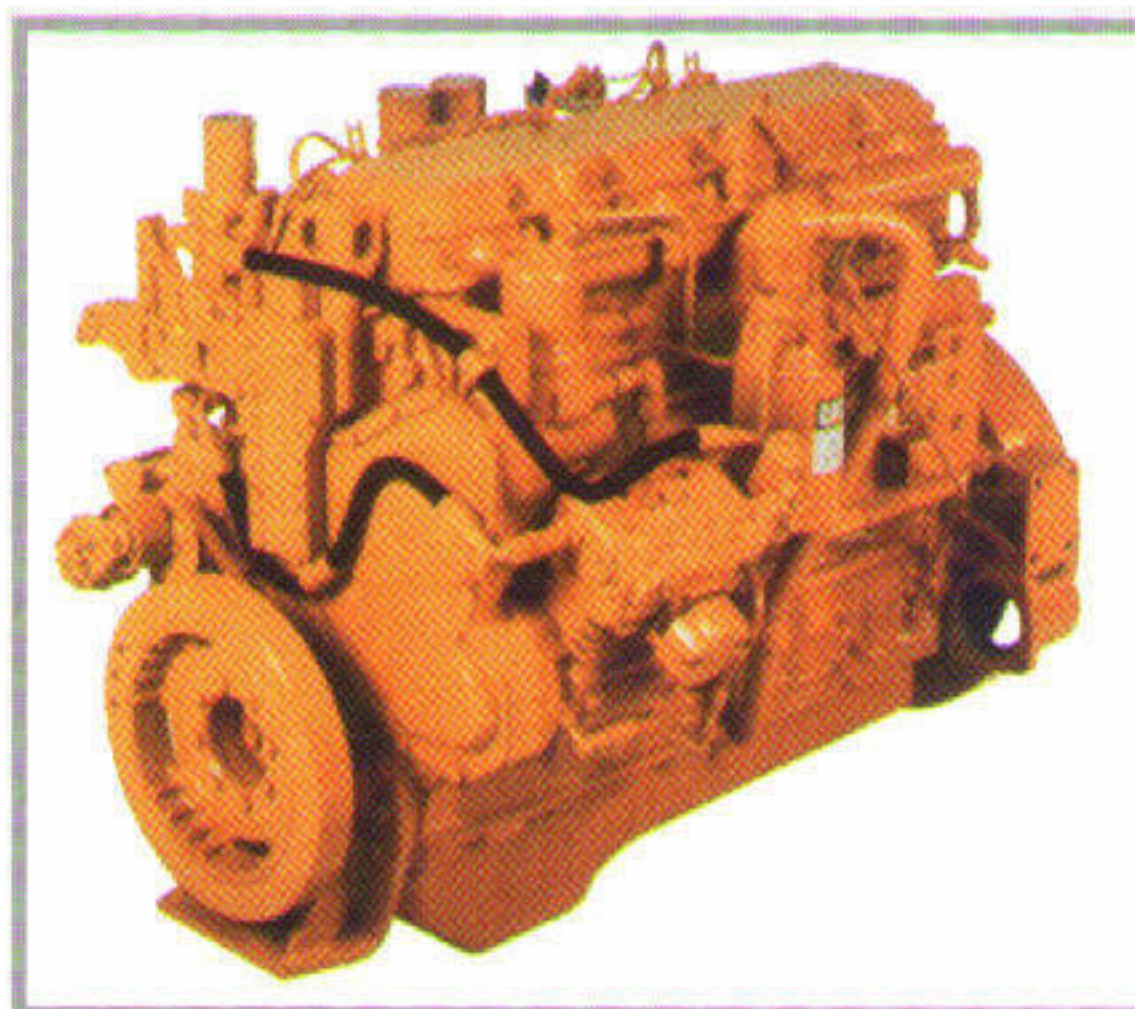




## **Caterpillar's New 3126™ Turbo-Diesel Electronic Engines - A Magnum Exclusive**

The 1996 Patriot is driven by the most sophisticated and powerful engine in its class: the exclusive new Caterpillar 3126™ turbo-diesel electronic engine. This next-generation diesel engine runs so efficiently, it already meets 1998 emission requirements *without a catalytic converter!* You'll notice more horsepower, better fuel economy, and longer service intervals.

The proof: compared with a Cummins engine with the same rating, the 300HP Caterpillar provides substantially more torque - power to



the road - especially at low rpms. The secret is called HEUI™ - electronically controlled hydraulic fuel injectors that provide greater intake pressure at low rpms, for the best acceleration "off-the-dime."

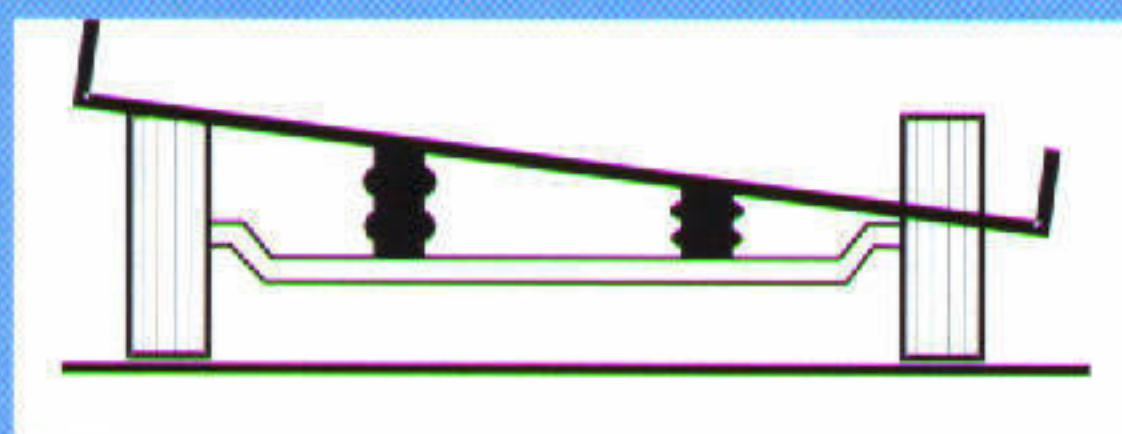
The Cat 3126 is just one part of the Magnum IntelliDrive™ System - a sophisticated group of electronic components, including engine, transmission, and driver console, that communicate through a digital data link to provide improved performance, economy, and reliability.



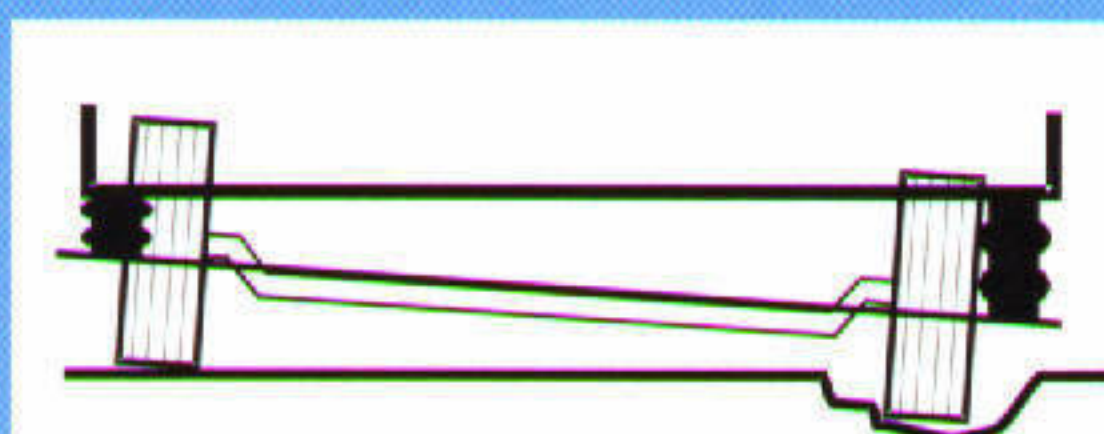
*Magnum IntelliDrive™ Display*

## **Magnum Air™ Suspension Solves Two Air-Ride Problems of the Past:**

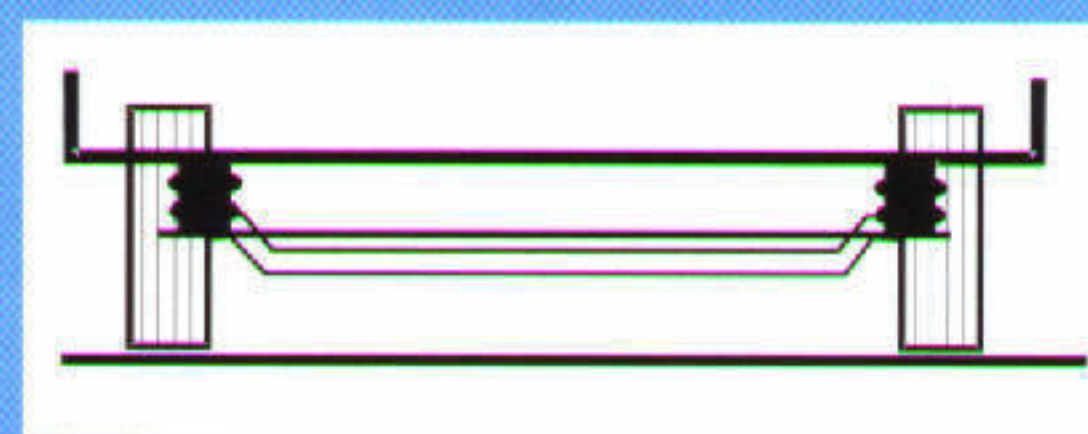
- **Lack of Stability**
- **Lack of Suspension Travel**



*Standard rail-mount systems lack stability in crosswinds and curves.*



*Outboard systems don't allow enough travel. Large bumps can actually twist the coach.*

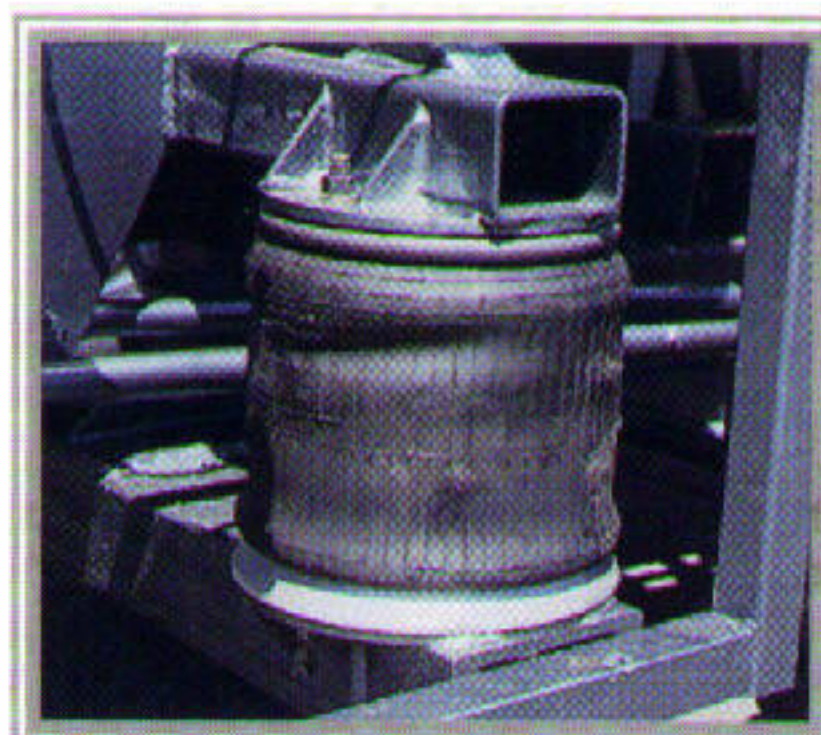


*Only the Magnum Air™ is mathematically designed for optimum stability and travel.*

Until today, the coach buyer who demanded the smooth feel of an air-ride chassis had to choose between two inadequate systems. Most coaches use a rail-mount system, with a narrow stance that causes the coach to sway in crosswinds and on curvy roads. A few builders use an outboard system, which although more stable, have a

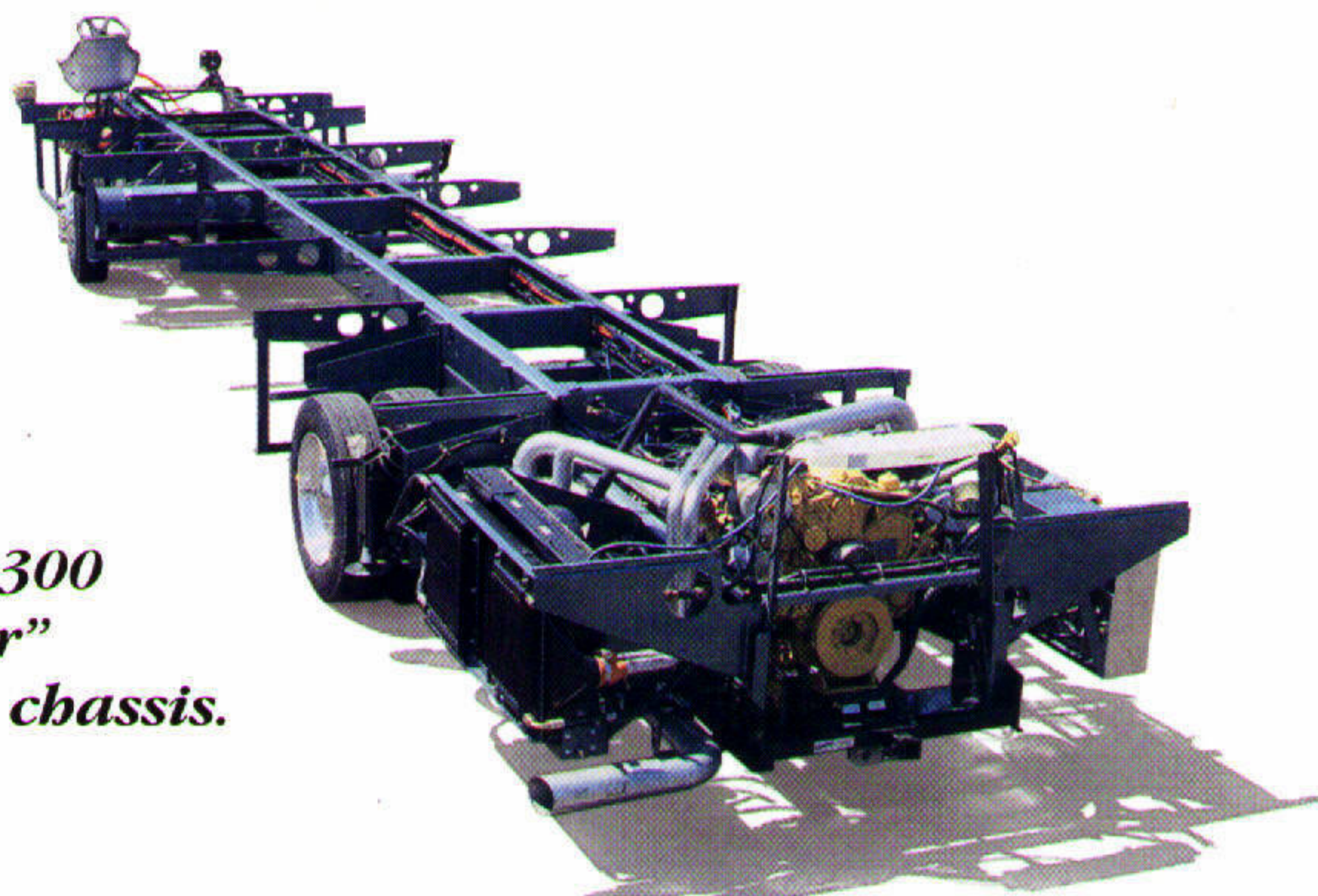
limited capacity for large bumps. If a bump is too large for the suspension, the coach itself twists

under the shock, with severe consequences for the coach. But the Magnum Air™ was scientifically engineered to handle all of these conditions. No wonder Magnum has already applied for a patent.





# MAGNUM



**Magnum B30A300**  
**"Magnum Air"**  
*The ultimate air-ride chassis.*

**M**agnum Manufacturing - America's fastest growing chassis builder - introduces the B30A300 "Magnum Air" - a chassis specifically designed for the 1996 Patriot. Engineered to be the ultimate air-ride chassis, the Magnum Air brings a new level of quality and innovation into this class of motor coach.

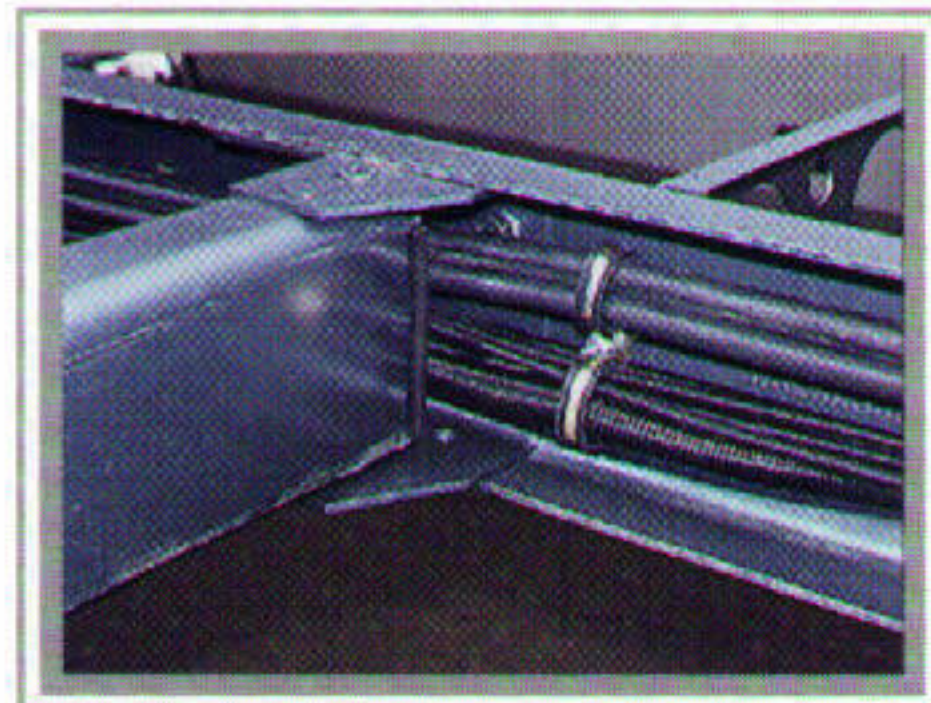
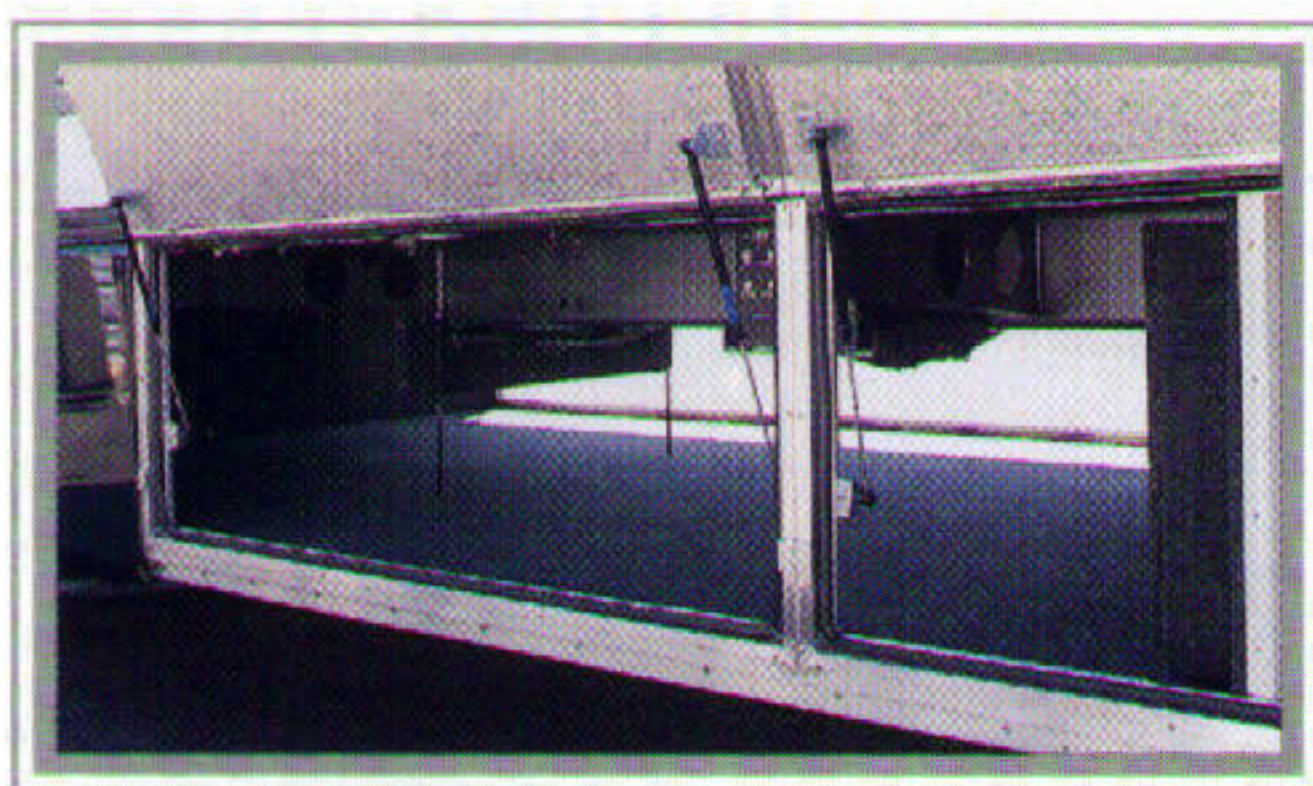
The Magnum engineers worked closely with their counterparts at Beaver to ensure that this chassis matched the Patriot perfectly. Using "goal-convergent

design", the two teams worked together through the entire design

process. They selected high-strength steel alloys, computer formed for precise fit. They designed entirely new drive

train and suspension systems for maximum performance and driver comfort. They started with a "white paper", and never compromised the design.

The result: improved balance and handling; increased storage; better fit and finish; and increased reliability of the entire coach. No chassis is easier to service, and no chassis offers a more durable foundation for the finished coach. The Patriot and Magnum Air - the perfect union of coach and chassis.

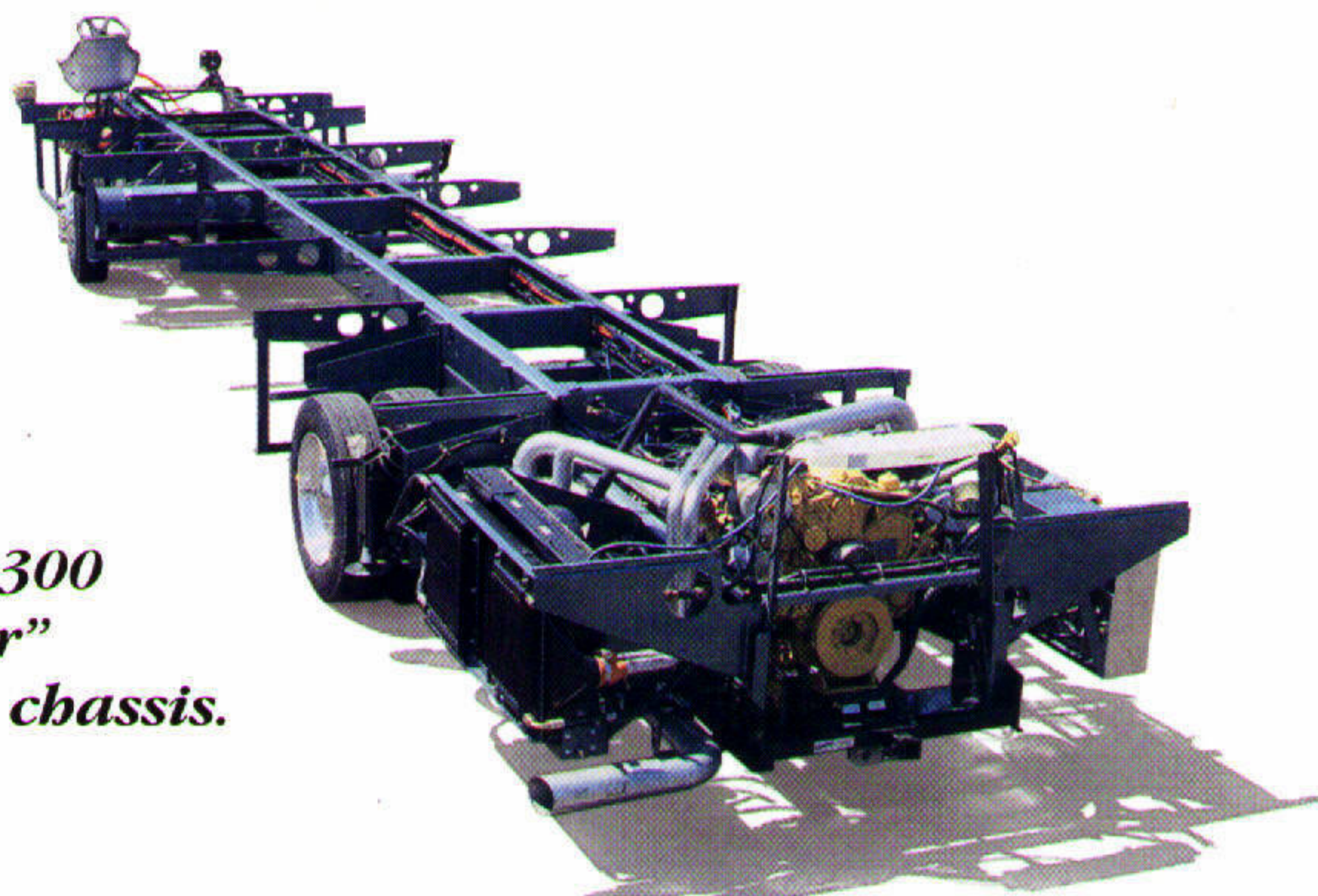


## Magnum B30A300 "Magnum Air"™

GVWR:	30,000 lbs
GCVW:	36,000 lbs
Engine:	Caterpillar 3126™ Turbo Diesel
Horsepower:	300 HP @ 2,200 rpm
Torque:	860 ft-lbs @ 1,400 rpm
Transmission:	Allison MD3060 World™ 6-Speed Transmission
Suspension:	Magnum Air™ Eight Bag
Engine Retarder:	PacBrake™
Brakes:	Dual Air/Hydraulic Brakes
Cooling:	Charge Air Cooled Side Radiator
	Air-to-Oil Transmission Cooler
	Air-to-Oil Hydraulic Cooler
	Electric Clutch Activated Hydraulic Fan
Rear Axle Mfg.:	Eaton
Front Axle Mfg.:	Westport
Tires:	255/70R 22.5 Radials



# MAGNUM



## *Magnum B30A300 "Magnum Air" The ultimate air-ride chassis.*

**M**agnum Manufacturing - America's fastest growing chassis builder - introduces the B30A300 "Magnum Air" - a chassis specifically designed for the 1996 Patriot. Engineered to be the ultimate air-ride chassis, the Magnum Air brings a new level of quality and innovation into this class of motor coach.

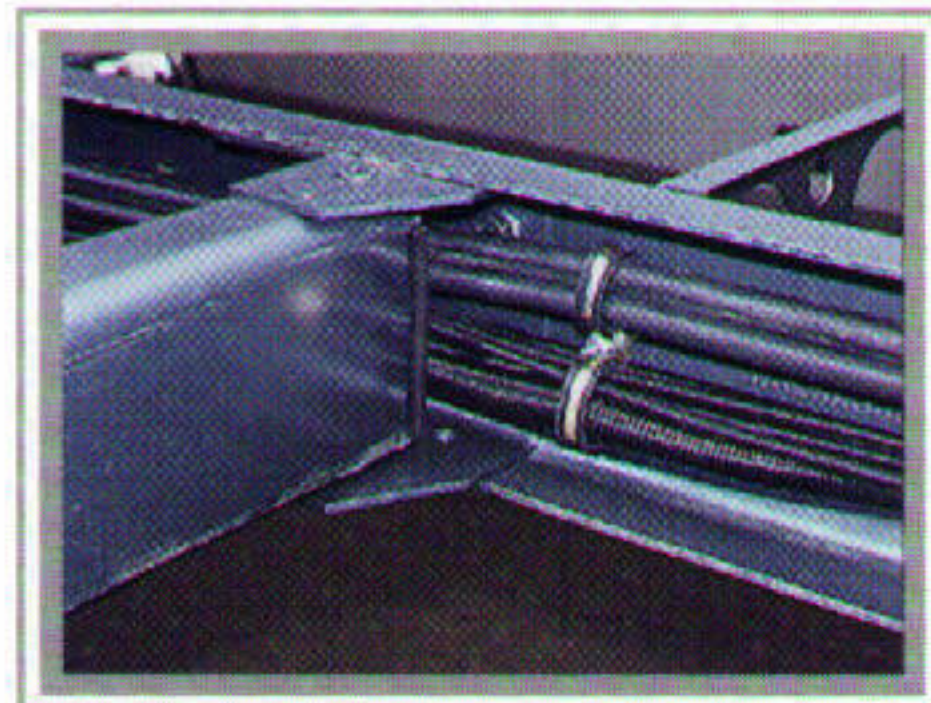
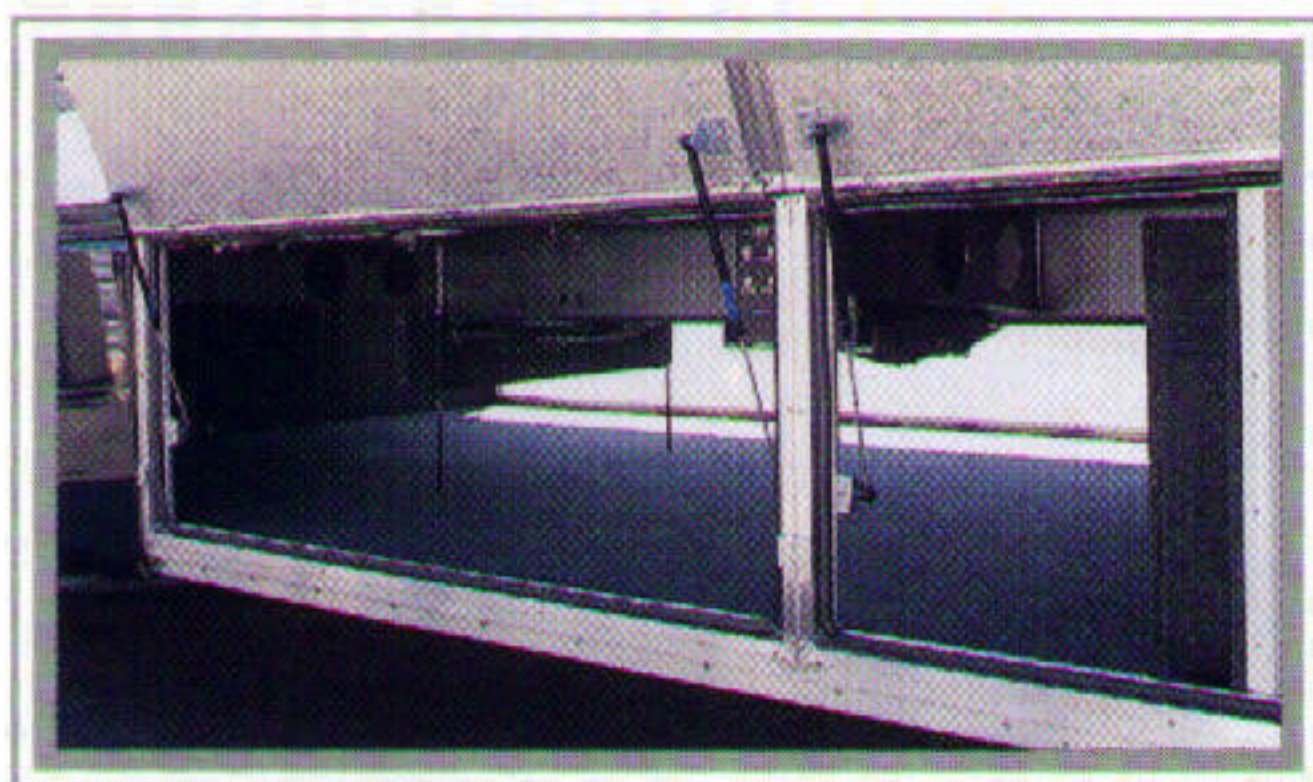
The Magnum engineers worked closely with their counterparts at Beaver to ensure that this chassis matched the Patriot perfectly. Using "goal-convergent

design", the two teams worked together through the entire design

process. They selected high-strength steel alloys, computer formed for precise fit. They designed entirely new drive

train and suspension systems for maximum performance and driver comfort. They started with a "white paper", and never compromised the design.

The result: improved balance and handling; increased storage; better fit and finish; and increased reliability of the entire coach. No chassis is easier to service, and no chassis offers a more durable foundation for the finished coach. The Patriot and Magnum Air - the perfect union of coach and chassis.

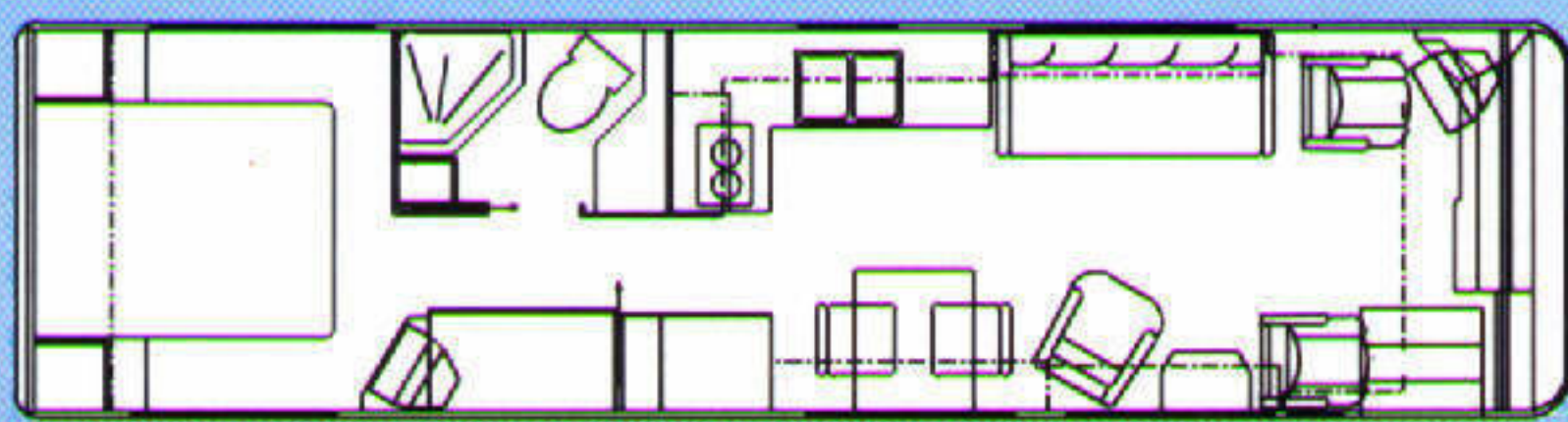


### **Magnum B30A300 "Magnum Air"™**

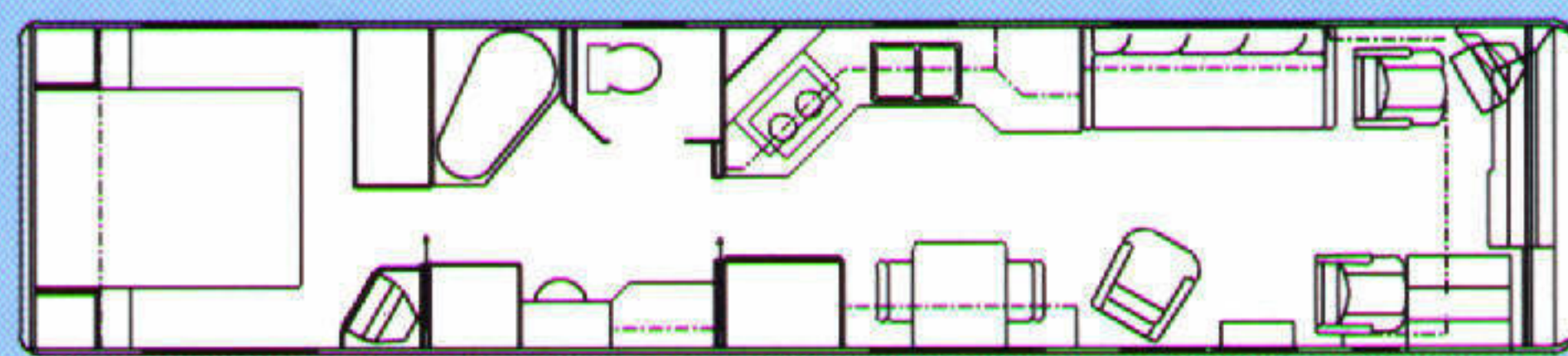
GVWR:	30,000 lbs
GCVW:	36,000 lbs
Engine:	Caterpillar 3126™ Turbo Diesel
Horsepower:	300 HP @ 2,200 rpm
Torque:	860 ft-lbs @ 1,400 rpm
Transmission:	Allison MD3060 World™ 6-Speed Transmission
Suspension:	Magnum Air™ Eight Bag
Engine Retarder:	PacBrake™
Brakes:	Dual Air/Hydraulic Brakes
Cooling:	Charge Air Cooled Side Radiator
	Air-to-Oil Transmission Cooler
	Air-to-Oil Hydraulic Cooler
	Electric Clutch Activated Hydraulic Fan
Rear Axle Mfg.:	Eaton
Front Axle Mfg.:	Westport
Tires:	255/70R 22.5 Radials



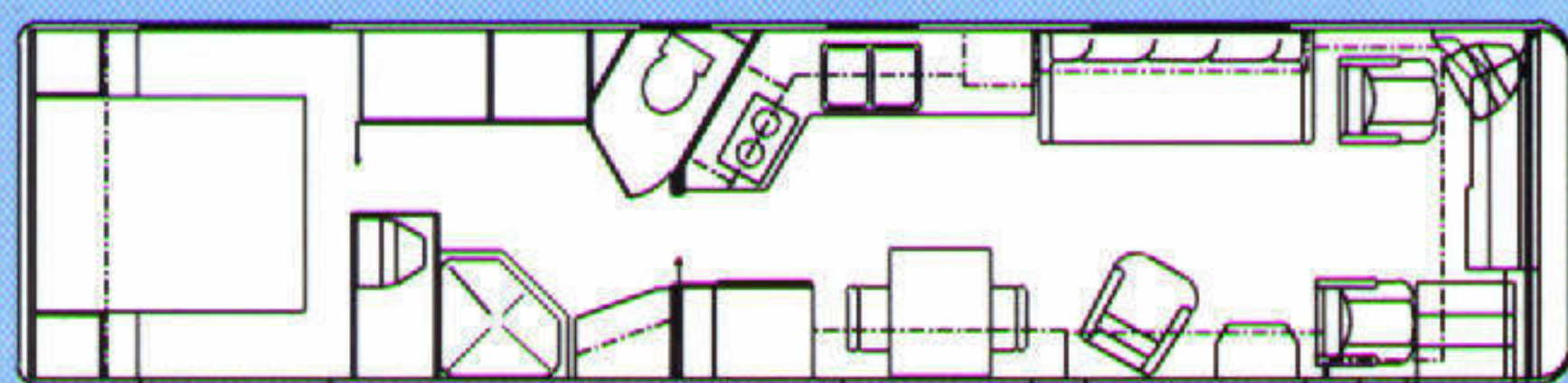
## 1996 Patriot Floor Plans



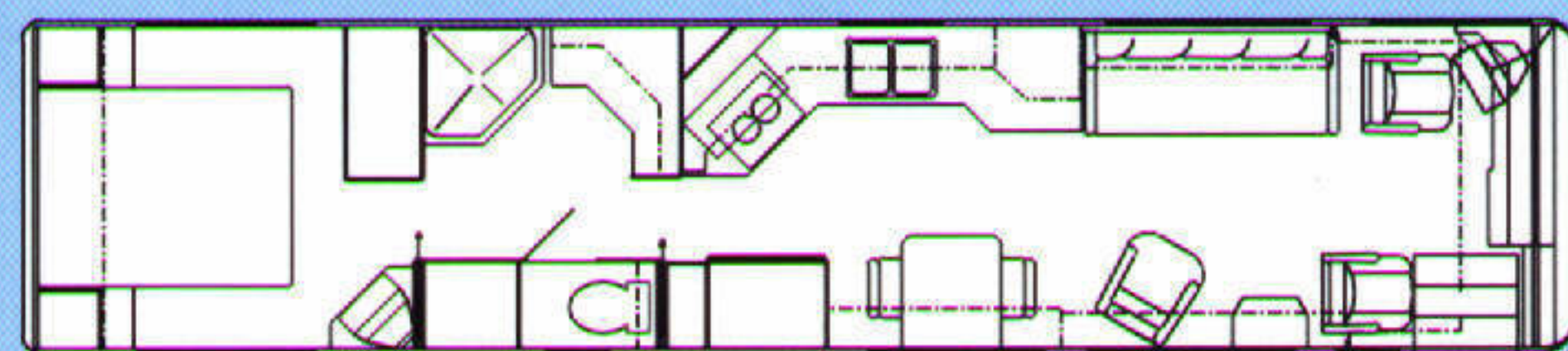
33' Savannah



40' Camden



37' Trenton



40' Yorktown

All Plans Also Available in Side Entry Configurations

## Specifications

### CAPACITIES

Fuel - 100 Gal.

LPG - 50 Gal.

Freshwater - 100 Gal.

Grey Waste - 50 Gal.

Black Waste - 50 Gal.

### KITCHEN FEATURES

Microwave/Convection Oven

Gaggenau Cooktop w/ Cover

Fountainhead™ Countertops

Fountainhead™ Double Sink

Fantastic™ Fan

Two Folding Chairs

12" Tile Floor

10 cft. Refrigerator/Freezer

### DRIVING COMFORTS

Magnum IntelliDrive Display

Power Leathermate Cab Seats

Rear View Monitor

Tilt & Telescoping Steering

Heated Remote Mirrors

Panoramic Windshield

### ENTERTAINMENT

20" TV in Living Area

Delco AM/FM Cassette Stereo

Amplified TV Antenna

VCR

### BATH AMENITIES

12" Tile Floor

Fountainhead™ Countertops

Porcelain Oval Sink

Insulated Skylight

Glass Tub/Shower Enclosure

Fantastic™ Fan

### BEDROOM COMFORTS

20" Remote Control Color TV

Queen Size Walk-Around Bed

Day/Night Shades

Telephone Jack

Ducted Roof Air

### SYSTEMS

6.5 kW Onan LPG Generator

42,000 BTU Furnace

Dual 13,500 BTU Ducted A/C

2000 Watt Freedom™ Inverter

100 Amp Charger

Dual Regulated Solar Panels

50 Amp Power Service

### EXTERIOR FEATURES

Fully Painted Graphics

Clear Coat Finish

Heated & Insulated Basement

Enclosed Water Tank

Enclosed Waste Tanks

Patio and Window Awnings

Automotive Undercoating

Black Holding Tank Flush

Exterior Hot and Cold Water

Trailer Hitch and Connector

### PATRIOT LUXURY PACKAGE

Power Passenger Footrest

Pilot Seat w/Lumbar Support

Electric Locking Bay Doors

Rear Full Width Mud Flap

Leathermate Recliner

Roll-Out Cargo Tray

Sculptured Carpet

Electric Bay Door Locks

### POPULAR OPTIONS

Thermopane Windows

Washer/Dryer Combination

Delco Stereo/CD Upgrade

Leathermate Sofa

Leathermate Love Seat

RV King Bed

Dishwasher (40' only)

4-Burner Gaggenau Stove

All Specifications Subject to  
Change Without Notice or  
Obligation.



**Beaver**   
**Motor Coaches**

20545 Murray Rd. • Bend, OR 97708  
1-800-423-2837

**Patriot Dealer**



Chassis	Magnum B30A300 "Magnum Air"		
Engine	Caterpillar 3126 Turbocharged Computerized Electronic Diesel Engine		
Horsepower	300HP @ 2,200 rpm		
Torque	860 lb-ft @ 1,440 rpm		
Transmission	Allison MD3060 6-Speed World Transmission		
GVWR	30,000 lbs.		
GCWR	36,000 lbs.		
Front Axle	11,000 lbs.		
Rear Axle	19,000 lbs.		
Wheelbase	195"	237"	272"
Floorplans Available	Savannah	Trenton	Camden, Yorktown
Exterior Length	33'7"	37'1"	39'9"
Curb Weight (Approx)	19,800 lbs.	21,200 lbs.	23,700 lbs.
Exterior Height	11'11"		
Fresh Water	100 Gallons		
Holding Tanks	50 Gallons Black, 50 Gallons Gray		
LP Gas	50 Gallons		
Water Heater	10 Gallons		
Fuel	100 Gallons		
Generator	6.5 kw Onan Marquis Front Mount		
Furnace	42,000 BTU		
Air Conditioners	Dual 13,500 BTU		

### Kitchen Features

Microwave/Convection Oven  
Recessed Two Burner Cooktop w/Cover  
Fountainhead® Countertops  
Fountainhead® Double Sink w/Cover  
Fantastic Ventilator Fan w/Remote Switch  
12" Tile Floor

### Driving Comforts

Leathermate™ 6-Way Pilot/Co-Pilot Seats  
Custom Dash Panel  
Rear View Monitor  
Tilt & Telescoping Steering Wheel  
Electronic Engine Readout Panel  
Heated Remote-Control Side Mirrors

### Bath Amenities

12" Tile Floor  
Fountainhead® Countertops  
Porcelain Oval Sink  
Insulated Skylight  
Fiberglass Tub/Shower w/Glass Enclosure  
Fantastic Ventilator Fan w/Remote Switch

### Bedroom Comforts

Nightstands w/Shirt Closets  
20" Remote Control Color TV  
Queen Size Walk Around Bed  
Day/Night Shades  
Telephone Jack  
Ducted Roof Air w/Wall Thermostat

### Power Systems

2000 Watt Inverter  
75 amp Charger  
Dual Solar Panels w/Regulator  
50 amp Cable Hookup  
Two Group 31 Chassis Batteries  
Automatic Power Source Switching

### Exterior Features

Painted Graphics w/Clear Coat Finish  
Spacious Pass-Through Cargo Bays  
Insulated Aluminum Bay Doors  
50 amp Power Cord  
Fresh Water Tank Enclosed & Heated By Forced Air  
Holding Tanks Enclosed & Heated By Forced Air  
Color Coordinated Patio & Window Awnings  
Automotive Undercoating  
Panoramic Windshield  
Exterior Hot & Cold Water w/Sprayer  
Trailer Hitch & Connector

### Chassis & Mechanical

Magnum Eight Air Bag Suspension  
Chassis Service Center  
Three-Point Hydraulic Leveling System  
Hydromax™ Braking System  
Heavy Duty Transmission Cooler  
TRW Ross Power Steering  
Electronic Throttle  
70r22.5 Radial Tires  
Electronic Cruise Control

### Entertainment Features

20" Television In Living Area  
Delco AM/FM Cassette Stereo  
Video Cassette Recorder  
Amplified TV Antenna  
Telephone Jack

### Luxury Comforts

110V Residential Lighting  
Solid Hardwood Cabinetry  
Designer Interiors  
Large Residential Windows

### Optional Equipment

Upgrade Stereo w/CD Changer  
Washer Dryer Combination  
Sculptured Carpet  
Leathermate Recliner  
Leathermate Sofa  
Leathermate Love Seat  
Patriot Luxury Package:  
\*Electric Locking Bay Doors  
\*Leathermate Recliner  
\*Driver's Lumbar Support  
\*Power Passenger Foot Rest  
\*Full Width Rear Mud Flap  
\*Roll-Out Cargo Tray  
\*Sculptured Carpet  
RV King Bed  
Four Burner Gaggenau Stove  
Canadian Approved Package  
Dishwasher (40' Only)  
Mid Entry Door  
Thermopane Windows

**Due To Constant Product Improvements, All Prices & Specifications Are Subject To Change w/out Notice or Obligation.**



Chassis	Magnum B30A300 "Magnum Air"		
Engine	Caterpillar 3126 Turbocharged Computerized Electronic Diesel Engine		
Horsepower	300HP @ 2,200 rpm		
Torque	860 lb-ft @ 1,440 rpm		
Transmission	Allison MD3060 6-Speed World Transmission		
GVWR	30,000 lbs.		
GCWR	36,000 lbs.		
Front Axle	11,000 lbs.		
Rear Axle	19,000 lbs.		
Wheelbase	195"	237"	272"
Floorplans Available	Savannah	Trenton	Camden, Yorktown
Exterior Length	33'7"	37'1"	39'9"
Curb Weight (Approx)	19,800 lbs.	21,200 lbs.	23,700 lbs.
Exterior Height	11'11"		
Fresh Water	100 Gallons		
Holding Tanks	50 Gallons Black, 50 Gallons Gray		
LP Gas	50 Gallons		
Water Heater	10 Gallons		
Fuel	100 Gallons		
Generator	6.5 kw Onan Marquis Front Mount		
Furnace	42,000 BTU		
Air Conditioners	Dual 13,500 BTU		

### Kitchen Features

Microwave/Convection Oven  
Recessed Two Burner Cooktop w/Cover  
Fountainhead® Countertops  
Fountainhead® Double Sink w/Cover  
Fantastic Ventilator Fan w/Remote Switch  
12" Tile Floor

### Driving Comforts

Leathermate™ 6-Way Pilot/Co-Pilot Seats  
Custom Dash Panel  
Rear View Monitor  
Tilt & Telescoping Steering Wheel  
Electronic Engine Readout Panel  
Heated Remote-Control Side Mirrors

### Bath Amenities

12" Tile Floor  
Fountainhead® Countertops  
Porcelain Oval Sink  
Insulated Skylight  
Fiberglass Tub/Shower w/Glass Enclosure  
Fantastic Ventilator Fan w/Remote Switch

### Bedroom Comforts

Nightstands w/Shirt Closets  
20" Remote Control Color TV  
Queen Size Walk Around Bed  
Day/Night Shades  
Telephone Jack  
Ducted Roof Air w/Wall Thermostat

### Power Systems

2000 Watt Inverter  
75 amp Charger  
Dual Solar Panels w/Regulator  
50 amp Cable Hookup  
Two Group 31 Chassis Batteries  
Automatic Power Source Switching

### Exterior Features

Painted Graphics w/Clear Coat Finish  
Spacious Pass-Through Cargo Bays  
Insulated Aluminum Bay Doors  
50 amp Power Cord  
Fresh Water Tank Enclosed & Heated By Forced Air  
Holding Tanks Enclosed & Heated By Forced Air  
Color Coordinated Patio & Window Awnings  
Automotive Undercoating  
Panoramic Windshield  
Exterior Hot & Cold Water w/Sprayer  
Trailer Hitch & Connector

### Chassis & Mechanical

Magnum Eight Air Bag Suspension  
Chassis Service Center  
Three-Point Hydraulic Leveling System  
Hydromax™ Braking System  
Heavy Duty Transmission Cooler  
TRW Ross Power Steering  
Electronic Throttle  
70r22.5 Radial Tires  
Electronic Cruise Control

### Entertainment Features

20" Television In Living Area  
Delco AM/FM Cassette Stereo  
Video Cassette Recorder  
Amplified TV Antenna  
Telephone Jack

### Luxury Comforts

110V Residential Lighting  
Solid Hardwood Cabinetry  
Designer Interiors  
Large Residential Windows

### Optional Equipment

Upgrade Stereo w/CD Changer  
Washer Dryer Combination  
Sculptured Carpet  
Leathermate Recliner  
Leathermate Sofa  
Leathermate Love Seat  
Patriot Luxury Package:  
\*Electric Locking Bay Doors  
\*Leathermate Recliner  
\*Driver's Lumbar Support  
\*Power Passenger Foot Rest  
\*Full Width Rear Mud Flap  
\*Roll-Out Cargo Tray  
\*Sculptured Carpet  
RV King Bed  
Four Burner Gaggenau Stove  
Canadian Approved Package  
Dishwasher (40' Only)  
Mid Entry Door  
Thermopane Windows

**Due To Constant Product Improvements, All Prices & Specifications Are Subject To Change w/out Notice or Obligation.**