

2006 WINNEBAGO ASPECT™

Big in Everything But Size.



THE 2006 ASPECT: THE COMPACT MOTOR HOME THAT'S LONG ON FEATURES.

Choose from three unique floorplans, all featuring warm interiors and rich colors.



26A - Magic Moon with Sierra Maple

ALL THE COMFORTS OF HOME ON THE ROAD.

The 2006 Aspect gives you all the luxuries of home in a nimble, easy-to-maneuver compact package. The new 29H floorplan gives you a rear and a front slideout for incredible spaciousness. The first thing you'll notice in this finely crafted motor home is the premium Stitchcraft furniture, available in your choice of three fabrics and optional UltraLeather HP™ upgrade package. Underfoot, you'll find plush carpeting in the living area as well as great-looking, easy-to-care-for Congoleum® vinyl flooring in the galley and bath area. The elegant bathroom also features a residential-height toilet and a beautiful skylight over the shower.

To ensure your comfort wherever you may roam, the Aspect's floor-ducted heating and ceiling-ducted air conditioning are thermostatically controlled: just set it and forget it. An optional heat pump takes the chill off a cool morning without turning on the furnace. And perfect

lighting is always at your fingertips, thanks to day/night pleated shades and conveniently placed wall switches for the ceiling lights.

The Aspect's unique U-shaped dinette on the 26A is more than a great place to enjoy a meal — it's a great place to spend quality time with your friends and family, recounting the day's adventures or settling in for a game or two.

The dinette also converts easily into a spacious sleeping area. And for even more sleeping options, the sofa (on the 23D and 29H) converts into a comfortable bed as well. Every Aspect is outfitted with additional seat belts to give greater seating flexibility while traveling. A child-seat tether is located in the forward-facing dinette seat.

When you're traveling in the Aspect, the journey itself is truly the destination.



26A

RELAX IN COMFORT. ENTERTAIN IN STYLE.

The Aspect comes fully equipped with everything you need for entertaining. Or being entertained.

GET YOUR FAVORITE SHOW ON THE ROAD.

The standard front entertainment center features a satellite-system-ready 24" Sony® flat-face TV, while the available Deluxe Sound System with 5-channel QSurround™ turns the Aspect into your own personal theater. Settle into the Stitchcraft hoop-base lounge chair (on the 26A), which swivels, glides and can be positioned to your favorite spot when you're not traveling. Or take in the game on the 15" LCD TV available in the bedroom on the new 29H.

And to make sure you don't miss any highlights, select the optional 300-watt inverter, which powers the TV and DVD player even when you're not connected to shoreline or generator power.



THE JOY OF COOKING. ANYWHERE.

Whether you're feeding the whole crew or preparing an elegant dinner for two, the Aspect's carefully planned galley makes cooking easier and more enjoyable. SmartSpace™ design elements include the double-door refrigerator/freezer, pantry with pullout shelving (on the 23D and 26A) and full-extension drawer slides. The molded double sink with cover gives you additional prep space.

Cooks can choose the available three-burner Magic Chef® range with oven or opt for more storage by choosing the standard range top with drawers below. Either way, a microwave/convection oven and vented range hood with light are standard and help make cooking a breeze. The available water filtration system keeps clean, filtered water close at hand.



TAKE COMMAND.

The Aspect puts controls conveniently at hand.



SIRIUS
RV-RADIO

STEP INTO THE COCKPIT.

The Aspect's well-designed cockpit reflects our SmartSpace design philosophy. You'll find all controls, including the standard power windows, positioned for a comfortable driving experience.

The available LCD rearview monitor system gives you a clear view of what's behind you when backing and maneuvering.

Control the RV Radio® with ease using the steering wheel remote. You can also control the radio from the comfort of the couch with the handheld remote. The RV Radio is Sirius® Satellite ready and includes AM/FM stereo, CD player, weather band and large, easy-to-use knobs. Upgrade your RV Radio with the available Sirius Satellite radio package and receive 120 channels of crystal clear programming and a free six-month subscription (not available in Canada).

For added comfort, the high-back multiposition Stitchcraft cab seats have fixed lumbar support and are now available in UltraLeather HP or as part of the UltraLeather HP package.* And when you arrive, our exclusive Trimline™ center console gives you room to move easily from the cab to the living area.

*Interior chassis cab color selection may change at chassis manufacturer's discretion. Please see your dealer for latest details.

THE LITTLE THINGS MAKE THE DIFFERENCE.

The more time you spend with your Aspect, the more you'll appreciate how much its "little" features enhance your RV experience.

For example, you'll never have to fumble for keys, thanks to the keyless remote that lets you unlock the driver, passenger and even the entrance door with the push of a button. And securely locking up your Aspect is just as easy.

Off on an early morning hike? Stay in touch with the available set of four two-way radios. They feature a range of up to five miles and can recharge from the coach's house batteries at their convenient built-in charging station. So if you spot a deer — or it's time to come in for lunch — you can quickly share the word.



STANDARD AND AVAILABLE FEATURES ENHANCE THE EXPERIENCE.

The Aspect takes advantage of the latest technology for added comfort, convenience and enjoyment.



GET SPONTANEOUS WITH THE ASPECT.

The Aspect is the perfect getaway vehicle. It's fully equipped for longer trips, and it excels at making short weekend jaunts seem like full-blown vacations.

Once you arrive, the available exterior awning lets you enjoy the outdoors while providing shelter. And when you do head indoors, our new soft-touch assist handle provides a secure grip.

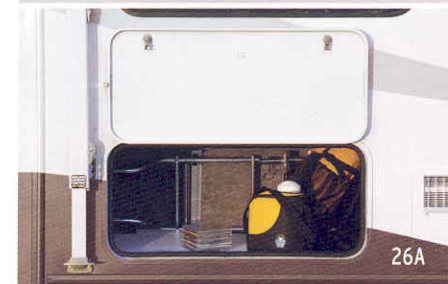
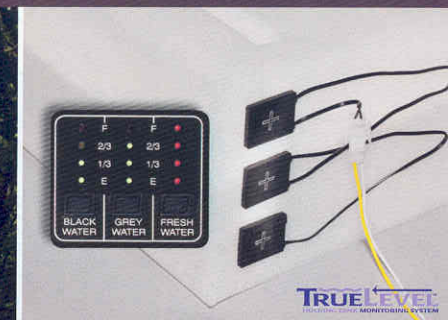
For your convenience, the exterior service center features large color-coded labels making hookups quick and easy. And our exclusive TrueLevel™ holding tank monitoring system incorporates Mirus* detector cells to determine liquid levels from outside the tank. No probes to clog or corrode, just accurate tank-level readings time after time.

LEAVING IT ALL BEHIND DOESN'T MEAN YOU CAN'T TAKE IT WITH YOU.

Cooking out? You don't have to miss a beat. The available exterior entertainment center includes an AM/FM stereo with CD player and remote speakers, 12-volt DC receptacle, 110-volt outlet, TV jack, a removable table and a lockable compartment door.

To make sure you catch all your favorite shows wherever you are, choose the available digital satellite dish or the in-motion RV digital satellite dish from King-Dome® for reception while you're on the road.

And whether you're visiting family or checking out a new park or campground, you can bring along more of your gear, thanks to the large exterior storage compartments. You can also bring along towable playthings using the standard 5,000-pound capacity, 350-pound tongue weight hitch with fixed-mount, 7-pin connector.



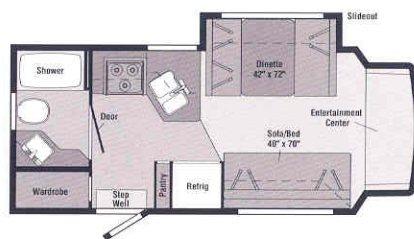
*Mirus is a trademark of Material Sciences Corporation.

EVERY DETAIL IS ACCOUNTED FOR.

We put as much work into the inside of our Aspect as we do the outside.

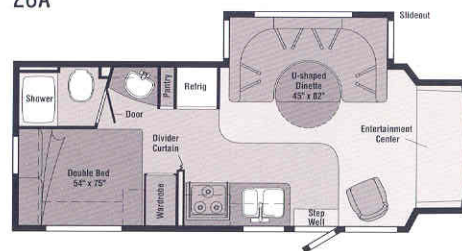
INTERIORS

23D

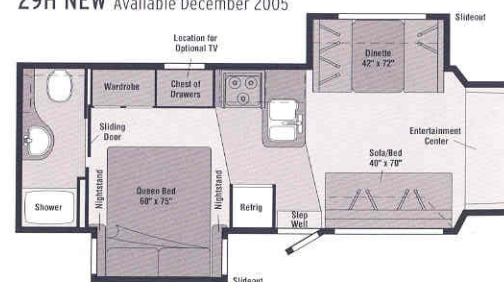


Note: Dimensions shown are for sleeping space only and may vary due to styling differences.

26A



29H NEW Available December 2005



DESIGNED LIVING.

We believe the same high standards we apply to construction should apply to interior design. That's why we create efficient floorplans based on customer input, why we look for durable fabrics in pleasing colors, and why we handcraft our own cabinets using traditional panel-and-rail construction.

The available Deluxe Graphics Package with silver cab, stylized body paint and painted fiberglass running boards with wheel lips is going to turn some heads. And the available flush-mounted, dual-glazed, thermo-insulated coach windows will add comfort in both warm and cool weather.

Standard Graphics



Catalina Blue Metallic



Light Bronzemist Metallic



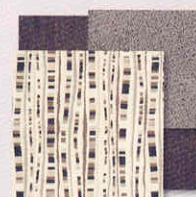
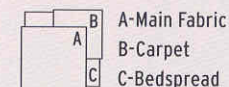
Deluxe Graphics



Kalahari Beige



Rosewood



Magic Moon



Mocha



Oasis



Sierra Maple



Washed Maple

2006 ASPECT SPECIFICATIONS

	23D	26A	29H NEW
Length	23'10"	26'6"	29'11"
Exterior Height^a	10'5"	10'0"	10'0"
Exterior Width	7'11.2"	7'11.2"	7'11"
Exterior Storage^b (cu. ft.)	19.2	43.0	26.3
Interior Height	6'5"	6'5"	6'5"
Interior Width	7'8"	7'8"	7'8"
Freshwater Capacity w/Heater^c (gal.)	33	43	42
Holding Tank Capacity^c - Black/Gray (gal.)	23 / 30	32 / 37	37 / 32
LP Capacity^d (gal.)	18	18	18
Fuel Capacity (gal.)	55	55	55
GCWR^e (lbs.)	18,500 [■] / 20,000 [●]	20,000 [●]	20,000 [●]
GVWR (lbs.)	11,500 [■] / 14,050 [●]	14,050 [●]	14,050 [●]
GAWR - Front (lbs.)	4,600	4,600	4,600
GAWR - Rear (lbs.)	7,800 [■] / 9,450 [●]	9,450 [●]	9,450 [●]
Wheelbase	158"	182"	220"

■ = Chassis A ● = Chassis B

Standard - S Optional - O

23D 26A 29H

AUTOMOTIVE/CHASSIS

Chassis A^f - Ford® E350, 6.8L Super-Duty V10 SOHC Triton® engine, 305-hp, automatic transmission, Torqshift™ 5-speed with tow/haul feature, 4-wheel ABS, 130-amp. alternator, dual air bags (NA deluxe graphics)	S		
Chassis B^f - Ford E450, 6.8L Super-Duty V10 SOHC Triton engine, 305-hp, automatic transmission, Torqshift, 5-speed with tow/haul feature, 4-wheel ABS, 130-amp. alternator, dual air bags	O	S	S
Tire spare, Tire Tool wrench, Trailer Hitch^g 5,000-lb. drawbar/350 lbs. maximum vertical tongue weight & wiring, 7-pin connector, Wheels Liners stainless steel	S	S	S
Air Springs aux. rear, Wheels stylized aluminum	O	O	O

CAB AREA & DRIVER CONVENIENCES

Trimline, Beverage Holder, Cab Seats (fabric), armrest, fixed lumbar support, multiadj. slide/recline, Cigarette Lighter/12-volt DC Powerpoint, Cruise Control, Curtain cab divider, Floor Mats rubber, driver & passenger, Power Door Locks w/remote control, driver/passenger/main entry, Power Cab Windows, Steering Wheel tilt w/power-assist, Sunvisors, Trim Panels driver & passenger doors (chassis-supplied) w/map pocket (Ford)	S	S	S
Cab Seats (UltraLeather HP), Instrument Panel appliqué, Monitor System rearview w/single camera, LCD monitor, Audiovox®	O	O	O

ENTERTAINMENT

RV Radio (cab) AM/FM/stereo/CD player w/weather band, speakers (4) w/remotes, Sirius satellite radio ready, Radio Power Switch main/aux., battery, TV 24" flat-face, color AC stereo w/remote, Sony, TV Enhancement Package 12-volt DC powerpoint, interior jack(s), coax wiring, cable input	S	S	S
DVD w/remote, 12-volt, Entertainment Center (exterior) AM/FM radio w/CD player & remote, DC receptacle, AC duplex receptacle, TV jack, radio antenna, speakers (2), lockable compartment, removable TV table, Radios (4) 2-way, docking port w/charger, Satellite Radio Sirius, includes six-month paid subscription (NA in Canada), Satellite Dish Antenna RV digital, manual, elevation sensing unit, Satellite System RV digital, in-motion, elevation sensing unit, Deluxe Sound System w/5-channel OSurround sound, amplifier, speaker system(s)	O	O	O
TV 15" LCD stereo w/remote, 12-volt			O

INTERIOR

Ceiling fabric, Clock recessed, Cupholder(s) , Lights decorative overhead, dinette, Lights ceiling, incandescent w/wall switches, 12-volt DC Powerpoint , Shades day/night pleated (lounge, dinette & bedroom), Mini Blinds (galley & bath), Roof Vent nonpowered, lounge	S	S	S
Roof Vent powered ventilator fan, lounge, Windows dual-glazed/thermo-insulated	O	O	O
12-volt Powerpoint dining	S	S	S
Lights halogen, Light swivel			S

CABINetry

Sierra Maple or Washed Maple stile-and-rail construction w/raised-panel inserts on upper doors	O	O	O
---	---	---	---

COUNTERTOPS

Laminate w/T-mold edge	S	S	S
-------------------------------	---	---	---

FLOORCOVERING

Carpeting w/pad, Vinyl galley, bath, & stepwell area	S	S	S
--	---	---	---

a The height of each model is measured to the top of the tallest standard feature and is based on the curb weight of a typically equipped unit. The actual height of your vehicle may vary by several inches depending on chassis or equipment variations. Please contact your dealer for further information.

b The load capacity of your motor home is designated by weight, not by volume, so you cannot necessarily use all available space when loading your motor home.

c Capacities are based on measurements prior to tank installation. Slight capacity variations can result due to installation applications.

d Capacities shown are tank manufacturer's listed water capacity (W.C.). Actual filled LP capacity is 80% of listing due to overfilling prevention device on tank.

e Actual towing capacity is dependent on your particular loading and towing circumstances which includes the GVWR, GAWR and GCWR as well as adequate trailer brakes. Please refer to the Operator's Manual of your vehicle for further towing information.

Standard - S Optional - O

23D 26A 29H

FURNITURE

Dinette w/access to storage below, Sofa w/throw pillow	S		S
Chair lounge, hoop-base (swivel/glider) (must be secure when traveling), Dinette U-shaped w/access to storage below, slide-out baskets		S	
UltraLeather HP Furniture Package^f cab seats, dinette, sofa (NA 26A), lounge chair (26A only)	O	O	O

GALLEY

Faucet single-control, Moen® Microwave/Convection Oven Sharp®, Range Top 3-burner, drawer below, Range Hood vented w/light & fan, Receptacle duplex, Refrigerator/Freezer large double-door, two-way, Norcold® Sink double-bowl, molded w/sink cover	S	S	S
Countertop flip-up extension		S	
Pantry	S	S	
Range 3-burner w/oven, Magic Chef, Water Filtration System	O	O	O

BATH

Cabinet lavatory, Cabinet medicine, Faucet (shower) dual-control w/flexible showerhead, Light shower, Roof Vent powered, Shower wall surround w/removable clothes rod, Shower Door folding, Skylight , Toilet w/foot-pedal flush & sprayer	S	S	S
Faucet (lavatory) single-control, Mirror			S
Faucet (lavatory) dual-control	S	S	
Magazine Rack	S		S
Sink oval		S	S
Sink rectangular w/molded soap dishes	S		

BEDROOM

Bed double, bedspread, pillows, pillow shams, throw pillow, Shirt Closet		S	
Wardrobe clothes rod	S	S	S
Bed queen, split mattress, headboard, Chest of Drawers , Light decorative wall			S

EXTERIOR

Awning Rails w/rain gutters, Door entrance w/separate screen door, deadbolt lock, remote keyless entry, Entrance Door Steps single, manual, Exterior Graphics Package Catalina Blue Metallic, Lt. Bronzest Metallic, Ladder , Light porch w/interior switch, Mirrors plate-mounted, manual adjust w/convex, Mudflaps rear, Receptacle AC duplex, Running Boards fiberglass w/front mud guard, Sidewall Skin one-piece smooth fiberglass, Storage Compartments w/trunk liner	S	S	S
Awning patio, metal wrap, Entrance Door Step double, electric w/doorjamb switch, Deluxe Graphics Package (NA Chassis A) Kalahari Beige, Rosewood w/full-body painted silver cab, running boards w/wheel lips (w/protective film below entry door), Mirrors plate-mounted, electric/remote w/defroster	O	O	O

SYSTEMS

Automotive Heater/A/C, A/C (roof) 13,500 BTU, ceiling-ducted w/wall thermostat, Aux. Start Circuit , Batteries (1) (coach) Group 24 deep-cycle, Battery (coach) disconnect system, Battery Charge Control automatic dual, Drain water tank, 1" brass ball valve w/lever, Electrical Distribution System AC breaker panels, DC automotive fuses, 45-amp. converter/charger, Generator Prep Kit , Monitor Panel battery condition gauge, generator hourmeter gauge, generator start/stop switch, holding tank levels, LP tank level, water heater light(s), water heater switch, water pump switch, water tank level, Power Cord 30-amp, 25', Service Compartment (drainage/water) pressurized city water hookup/tank diverter fill, drainage valves, 10' sewer hose, Service Center (electrical) cable input, power cord, portable satellite dish hookup, Tank holding, heated compartment (26A/29H only), Tank LP , permanent mount w/gauge, TrueLevel holding tank monitoring system, Water Heater 6-gallon electronic ignition, LP gas, Water System Winterization Package water heater bypass valve & siphon tube, Water Pump demand, permanent magnet motor w/diaphragm, Water Tank Fill gravity w/locking door	S	S	S
A/C Heat Pump, Batteries (2) (sofa) Group 24 deep-cycle, Exterior Wash Station w/lighted pump switch, Generator 4,000-watt Onan® MicroQuiet™ gas, Inverter DC/AC, 300-watt	O	O	O
Drainage System heated, electric	O		
Furnace 25,000 BTU, low-profile	S		
Furnace 30,000 BTU, low-profile		S	S

SLIDEOUT

Slideout Room dinette w/slidoor cover	S	S	S
Slideout Room rear bed/sofa conversion w/slidoor cover			S

SAFETY

Airbags driver & passenger, Assist Bar interior, Assist Handle exterior, soft touch, Bumpers front & rear, Child-Seat Tether Anchor , Detectors/Alarms LP leak, smoke, carbon monoxide, Fire Extinguisher 10 BC, Ground Fault Interrupter , Lights high-mount brakelamps, Seat Belts cab, 3-point adj., Seat Belts lap (in selected areas), Window escape	S	S	S
---	---	---	---

WARRANTY^g

12-month/15,000-mile basic warranty^h, 36-month/36,000-mile warranty on structure^h, 10-year limited parts & labor warranty on roof skin^h	S	S	S
---	---	---	---

^f The chassis interior cab color is expected to change during 2006 model year. Please see your dealer for the latest specifications.

^g See separate chassis warranty details provided in owner's manual.

^h See your dealer for complete warranty information.

Not all items available in combination. See dealer for details.

Winnebago Industries® continuing program of product improvement makes specifications, equipment, model availability and prices subject to change without notice. Comparisons to other motor homes are based on the most recent information available.

NOT ALL MOTOR HOMES ARE CREATED EQUAL. As you take a closer look, you'll see that there is much more to the Winnebago Aspect than a long list of standard features and compelling floorplans. Beneath it all you'll find a SuperStructure® foundation of strength and durability, and Winnebago Industries' recognized service and warranty support.



We are committed to service. We back our motor homes with the best after-the-sale service in the industry. This includes a 12-month/15,000-mile basic limited warranty; 36-month/36,000-mile warranty on structure; standard 10-year limited parts-and-labor roof skin warranty; and complimentary 24-hour Roadside Assistance Program. TripSaver Fast Track Parts guarantees that in-stock warranty parts ship directly to your dealer within 24 hours. Winnebago Industries has a nationwide dealer service network.



Certified quality. Recreation Vehicle Dealer Association members annually rate RV manufacturers on the quality of their products, and on their sales and service support. Winnebago Industries has achieved the coveted Quality Circle Award every year since its inception, the only RV manufacturer to do so.



Warning: Joining WIT has been known to cause excessive fun. Winnebago-Itasca Travelers (WIT) is a club for owners of Winnebago Industries motor homes. WIT is a great way to meet people and offers you caravans and rallies, local and state group activities, and other benefits for RVers.



Seat belts are your most important hookup. Always buckle up.

NYSE listing: WGO

Visit www.winnebagoind.com for virtual product tours and the latest product updates.

©2005 Winnebago Industries Inc., Forest City, IA 50436. Printed in USA.



SUPERSTRUCTURE is the term given to Winnebago Industries' structural motor home design and construction. Rather than a single component, it is the culmination of design integration that incorporates steel and aluminum substructures; welded tubular steel floor supports; interlocking joint technology; and Thermo-Panel® floor, roof and sidewalls to form a high-strength, durable vehicle body.

Thermo-Panel manufacturing combines a durable aluminum exterior panel with welded aluminum support substructures. The substructures are embedded in a high-density, block-foam insulation core to create a strong, durable, yet lightweight sidewall. Just another Winnebago Industries invention.

- A** Interlocking joint construction utilizes advanced extruded aluminum structural components to create integrated floor-to-sidewall and sidewall-to-roof joints. This design effectively distributes the weight of the walls and roof, making a stronger and more durable body than competitor designs that rely on screws to carry the weight.
- B** The foundation substructure assembly is precision-aligned to maximize strength and cross-coach support as well as durability.
- C** Tubular steel floor supports provide a stable base for the floor structure and storage compartments.
- D** Critical steel components are treated using an advanced electrodeposition coating process that provides superior corrosion protection.

One-year-old Winnebago Industries' fiberglass roof



One-year-old competitor's rubber roof



BUILT TO A HIGHER STANDARD.

The Aspect features a crowned, one-piece fiberglass roof skin backed with a 10-year limited parts-and-labor roof skin warranty. Fiberglass offers superior strength, attractiveness and durability compared to rubber roofs found on many competitive models. Over time, rubber roofs are susceptible to chalking, streaking and degradation, and have less puncture and tear resistance than fiberglass.