

CHARLESTON

BY FOREST RIVER

THERE'S A BETTER WAY TO TRAVEL.



FOREST RIVER  
is proud to offer  
**ROADSIDE  
ASSISTANCE**  
by Charleston



# *Luxurious living in style.*

THERE'S A BETTER WAY TO TRAVEL.

Enjoy a relaxing day lounging in your spacious living room featuring seven feet ceilings. The Charleston offers you many variations of both décor and comfort. Choose from an assortment of colors, textures and styles including ultra soft leather and cloth fabric. Charleston's cabinets are built with only the best furniture grade wood featuring natural maple or cherry maple and raised cathedral doors, hidden hinge hardware and slide-out fascia crown molding. Day/Night shades offer ability to gain minimal to total privacy. Soft white fluorescent lighting, mood lighting with dimmer controls, and individual reading lights will provide you flexibility whether you are reading an exciting novel or entertaining friends. From grouted tile flooring to plush carpet, Charleston will give you all the comforts of home.





## FINE DINING AWAITS.

(Left) Charleston's kitchen galley slide-out room features standard Corian countertops with backsplash, a kitchen faucet extension, a microwave oven and a cook-top. The kitchen is enhanced by a slide-out counter-top extension equipped with drawers and a pantry for storage of household items or providing additional space while preparing meals or entertaining guests. Even with spacious 7 feet ceiling heights, your Charleston is designed with reachable overhead cabinetry.

## BEAUTIFUL. CLEAN. ELEGANT.

(Right) Most Charleston floor plans are equipped with a second lavatory featuring Corian counter-tops, a one-piece molded sink basin, a medicine cabinet with mirror, and overhead vanity lighting. The 400TS shown, also comes equipped with a large chest of drawers for clothing storage.



## PEACE OF MIND FOR THE ROAD.

Forest River has yet another exclusive feature to offer: One year of free roadside assistance will be given to every 2005 Charleston customer. This is just one more way to say "Thank you" and to ensure an enjoyable camping experience.





The cockpit is designed so that every control is at your fingertips allowing you to keep your eyes on the road while traveling. The ultra leather pilot and co-pilot seats swivel 360 degrees. The overhead cabinetry in the cockpit features a standard 27" flat screen TV w/ an available VHS player, DVD player and satellite ready. The Charleston has many available seating configurations for your selection.



ELECTRIC COMPARTMENT



WATER MANAGEMENT CENTER



SIDE HINGED BASEMENT STORAGE COMPARTMENTS



POWERED GENERATOR SLIDE TRAY

*Sleep comfortably in peace.*  
DESIGNED WITH STYLE AND CLASS.

(Below) Each bedroom is equipped with elegant fabrics on the throw pillows and bedspread and the dual pane window is accented with valances, lambrequins and day/night shades. In addition, the bedroom in your Charleston features a full size closet with mirror, overhead cabinetry storage and dual nightstands.





# CHARLESTON STANDARDS & OPTIONS

## CHASSIS— FREIGHTLINER XC SERIES STANDARDS

- Alternator
- Battery - dual 12V, CCA
- Brakes - full air w/ auto slack adjusters and ABS.
- Cruise control
- Engine - Caterpillar 7.2L Turbo
- Engine HP - 330 at 2200 RPM
- Engine torque - 860 at 1440 RPM
- Exhaust brake
- Warranty - 3 year, 50,000 mile
- Fuel capacity - 100 gallon
- Power steering
- Rear axle ratio - 4.78:1
- Rim size - 22.5 x 8.25
- Suspension, front - Neway Air Suspension
- Leather wrap "Smart Wheel™" steering wheel
- Tires - Goodyear G670 275/80R 22.5 LRH
- Transmission - Allison 3000, 6-speed
- Wheel base - 252"

## EXTERIOR STANDARDS

- Automotive undercoating
- Foam seal undercoating
- 3M film front mask (option)
- Cable/TV phone jacks
- Coach battery - dual
- Crowned, fiberglass roof
- Entrance door awning
- Power step well cover - air actuated
- Entrance step - electric
- Entry assist handle -lighted
- Exterior gelcoat fiberglass skin
- Front entrance door w/ screen and deadbolt
- Fuel fill door (dual)
- Full length drip and awning rail
- Hitch - 10,000 lbs.
- Hydraulic leveling jacks
- Rear ladder (option)
- Lockable, lighted basement storage w/ single action slam latches
- Outside shower
- Automotive style carpeted storage compartments
- One-piece bus-style side hinged storage compartment doors
- Panoraphic intermittent windshield wiper system
- Patio awning - deluxe metal wrap
- One touch automativ patio awning (option)

- Patio light
- Remote control exterior spotlight (option)
- Full length mud flap with logo (option)
- Docking lights
- Remote heated mirrors
- Silde-out room awning
- Polished aluminum wheels
- TV antenna w/ booster
- Windows - dual pane
- Air horns
- Basement slide-out tray (option)
- Full body paint - five selections

## STRUCTURAL STANDARDS

- 3" floor with ducted heating
- 1/2" structure wood flooring
- Laminated, aluminum framed side-walls, roof (openings)
- Laminated steel framed floor
- Steel truss system

## DRIVER / PASSENGER AREA STANDARDS AND OPTIONS

- 6-way power driver seat
- Ultra leather 6-way power co-pilot seat (option)
- Extra wide ultra leather power co-pilot seat with foot rest (option)
- Automotive dash heater/ air conditioner w/ deluxe controls
- Auxiliary starter switch
- Defroster fans (2)
- Driver/passenger map lights
- Satellite prep
- Digital satellite system (option)
- GPS navigational system (option)
- Home theatre system with DVD & surrond sound (option)
- VCR (option)
- Front wraparound lined curtain w/ easy slide track
- ICC flash
- Pioneer AM/FM/CD/Radio
- 6-disc CD changer (option)
- Power sun visors (option)
- Radio power selector switch
- Rear vision camera w/ monitor

## LIVING/DINING/GALLEY STANDARDS AND OPTIONS

- 3-burner cooktop - recessed (SS)
- 3-burner range with oven - Recessed (option)
- Brushed nickel cabinet hardware with hidden hinges

- Choice of 3 décors
- Booth dinette (option)
- Dinette free standing with chairs
- Fluorescent lighting throughout
- Front color 27" T.V.
- Sofa bed
- Ultra leather J-Sofa
- Ultra leather recliner and table (DS only) (option)
- Ultra leather Euro-recliner w/ ottoman & table (DS Only) (option)
- Ultra leather magic bed sofa (option)
- Microwave - convection (SS)
- Mirrors
- Ceramic flooring in kitchen and bath area
- Decorative accent lights
- Overhead cabinets in slide-outs
- Pantry
- Stainless steel refrigerator
- Rubber step tread with accent lights
- Scotch guard sculptured carpet with pad.
- Single lever kitchen faucet w/ spray head
- Sink covers in kitchen
- Maple cabinetry
- Cherry maple cabinetry (option)
- Corian counter tops and one-piece molded sink basins (kitchen, bath and bedroom)
- Spice rack
- Soft touch vinyl padded ceiling
- Window - day/night shades

## BATH STANDARDS AND OPTIONS

- 10 gallon gas/electric water heater w/DSI
- Black water tank flush system
- Single lever lavatory faucet
- Full size mirror
- Toilet w/ foot flush and spray
- Medicine cabinet
- One-piece fiberglass shower
- One-piece fiberglass tub (option N/A 400TS)
- Shower skylight
- Towel bar
- Tub/shower door - glass
- Washer/dryer (option)

**BEDROOM STANDARDS**

- 60" x 80" island queen bed w/ bedspread, headboard and storage below
- 20" T.V. in bedroom
- Bedside wardrobe
- Decorative wall lights
- Night stand
- Bedspread w/ decorative pillows
- Windows - day/night shades

**SAFETY STANDARDS**

- 110V GFI protected circuit (kitchen, bath, exterior)
- Carbon monoxide detector
- Exit window
- LP gas detector
- Smoke Alarm
- Surface mounted fire extinguisher

**WATER/HEATING/VENTILATION/POWER STANDARDS AND OPTIONS**

- 50 amp 120V distribution panel and detachable cord
- Artic package (including fresh water tank)
- Electronic battery disconnect
- Fantastic roof vents - 3
- 8.0 generator with power slide tray
- Low profile front roof A/C 15,000 BTU ducted air conditioning with heat pump
- Low profile Rear roof A/C 13,500 BTU ducted air conditioning with heat pump
- 40,000 BTU furnace
- Water filter system (FO)
- Individual zoned water supply system
- Variable speed constant pressure water pump
- 2000 watt inverter (standard)

**DIMENSIONS**

Interior height	84"
Interior width	95 1/2"
Overall height with A/C	12'3"
Overall length	
400TS	39'3"
400QS	39'3"
Overall width	100"

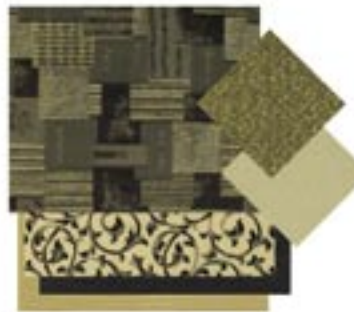
**LIQUID CAPACITIES**

Black water	44 gal.
Fresh water	86 gal.
Gray water	60 gal.
LP tank	39 gal.

**INTERIOR COLORS**



BEECHWOOD



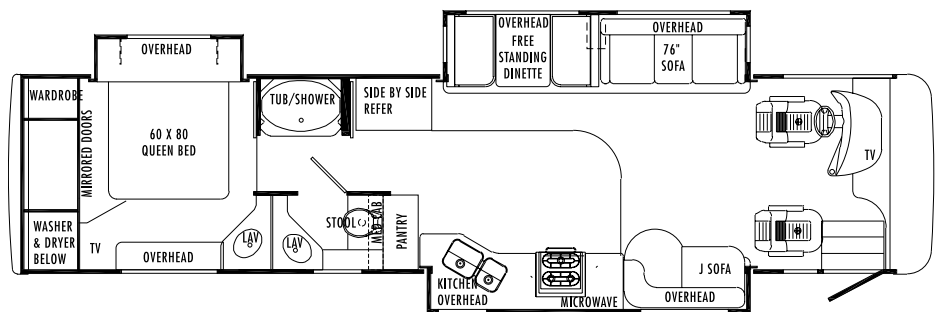
EBONY



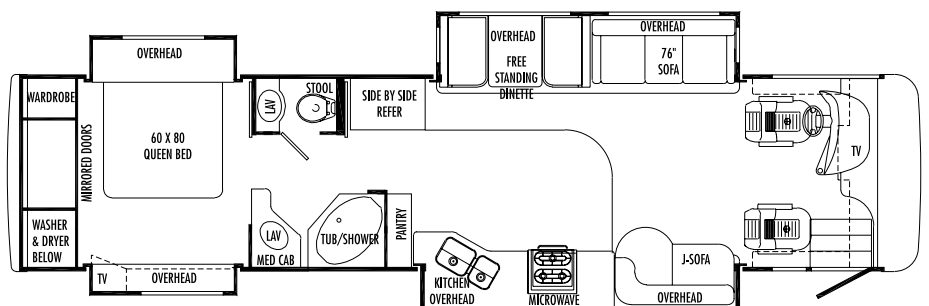
RAISIN

**FLOORPLANS**

**400 TS**



**400 QS**





## THE XC CHASSIS BY FREIGHTLINER

The XC Chassis by Freightliner Custom Chassis Corporation (FCCC). Offering a smooth ride and precise handling characteristics, the XC chassis provides a supreme driving experience for customers. And with the industry-leading wheel cut, the XC chassis is the most maneuverable chassis in the RV diesel pusher market. The Charleston comes standard with the following XC configuration:

- Raised Rail, Rear Radiator offers increased basement storage space and continuous 9" steel frame rails that minimize coach stress.
- I-Beam Front Suspension is engineered to increase stability, decrease body roll and provide the ultimate in ride quality.



Forest River, Inc. 55470 CR1 Elkhart, IN 46515-3030

Phone: 574-533-5934 Fax: 574-533-2965

[www.forestriverinc.com](http://www.forestriverinc.com) [www.forestriveraccessories.com](http://www.forestriveraccessories.com)

All illustrations and specifications contained in this literature are based on the latest product information at time of publication. Forest River reserves the right to make changes in prices, colors, materials, equipment and specifications at anytime without notice and assumes no responsibility for any error in this literature. All units are shipped F.O.B. Goshen, Indiana.

CONSULT YOUR LOCAL DEALER FOR WARRANTY INFORMATION.

YOUR CHARLESTON DEALER