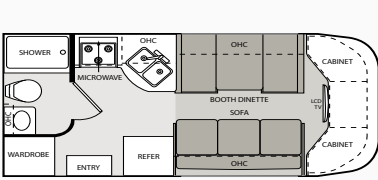


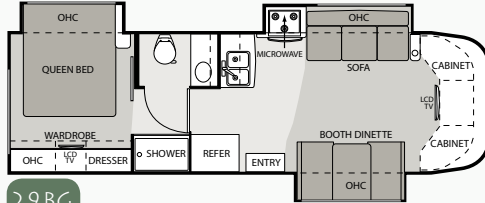
### KEY FEATURES

- European curved cabinetry
- New 28BK, triple slide with -U-shaped dinette
- New 24SC Sprinter model with bunk beds
- LCD Televisions
- New "Mega" storage in the basement area on the 31BH
- New 24SB Sprinter floorplan with Infiniss Leather sofa with air mattress hide-a-bed
- Back-up monitor standard on 24SA, 24SB and 24SC
- New Full-Body paint schemes

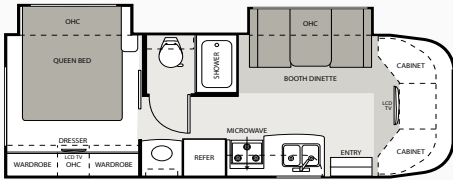
### FLOORPLANS



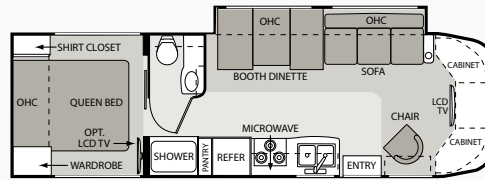
21BC



29BG

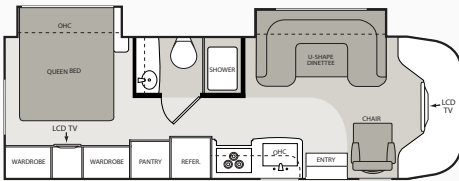


26BE



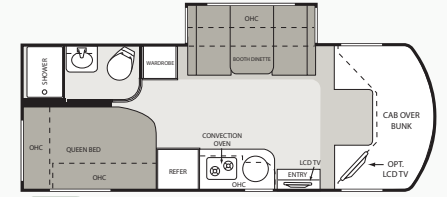
31BH

 **MEGA STORAGE**

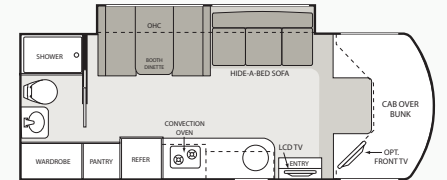


28BK

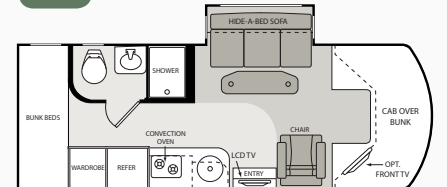
### CITATION SPRINTER



24SA



24SB



24SC

*FW Four Winds*  
INTERNATIONAL

### SPECIFICATIONS

| Model  | 21BC        | 26BE        | 28BK        | 29BG          | 31BH          | 24SA     | 24SB     | 24SC     |
|--|-------------|-------------|-------------|---------------|---------------|----------|----------|----------|
| <b>Ford Chassis - Triton Engine</b>                    | 5.4L/V-8    | 6.8L/V-10   | 6.8L/V-10   | 6.8L/V-10     | 6.8L/V-10     | N/A      | N/A      | N/A      |
| Gross Vehicle (GVWR)                                   | 11,500      | 14,500      | 14,500      | 14,500        | 14,500        | N/A      | N/A      | N/A      |
| Gross Combined (GCWR)                                  | 13,000      | 20,000      | 20,000      | 20,000        | 20,000        | N/A      | N/A      | N/A      |
| <b>Ford Chassis - Power Stroke Diesel Engine (opt)</b> | N/A         | 6.0L/V-8    | N/A         | N/A           | N/A           | N/A      | N/A      | N/A      |
| Gross Vehicle (GVWR)                                   | N/A         | 14,500      | N/A         | N/A           | N/A           | N/A      | N/A      | N/A      |
| Gross Combined (GCWR)                                  | N/A         | 20,000      | N/A         | N/A           | N/A           | N/A      | N/A      | N/A      |
| <b>Chevy Chassis - Vortec Engine</b>                   | 6.0L/V-8    | 6.0L/V-8    | 6.0L/V-8    | 6.0L/V-8      | 6.0L/V-8      | N/A      | N/A      | N/A      |
| Gross Vehicle (GVWR)                                   | 12,300      | 14,050      | 14,050      | 14,050        | 14,050        | N/A      | N/A      | N/A      |
| Gross Combined (GCWR)                                  | 16,000      | 17,600      | 17,600      | 17,600        | 17,600        | N/A      | N/A      | N/A      |
| <b>Sprinter Chassis - Turbo Diesel Engine</b>          | N/A         | N/A         | N/A         | N/A           | N/A           | 3.0L/V-6 | 3.0L/V-6 | 3.0L/V-6 |
| Gross Vehicle (GVWR)                                   | N/A         | N/A         | N/A         | N/A           | N/A           | 11,030   | 11,030   | 11,030   |
| Gross Combined (GCWR)                                  | N/A         | N/A         | N/A         | N/A           | N/A           | 14,530   | 14,530   | 14,530   |
| <b>WEIGHT RATING (LBS.)</b>                            |             |             |             |               |               |          |          |          |
| Wheel Base (Ford/Chevy)                                | 138"/139"   | 181"/182"   | 181"/182"   | 213"/214"     | 223"/224"     | 170"     | 170"     | 170"     |
| Exterior Length (w/out ladder) (Ford/Chevy)            | 22'8"/23'7" | 27'4"/28'3" | 27'4"/28'3" | 30'11"/31'10" | 31'11"/32'10" | 24'6"    | 24'10"   | 24'10"   |
| Exterior Height (w/ AC)                                | 10'7"       | 10'7"       | 10'7"       | 10'7"         | 10'7"         | 10'10"   | 10'10"   | 10'10"   |
| Exterior Width (without mirrors)                       | 94"         | 94"         | 94"         | 94"           | 94"           | 90"      | 90"      | 90"      |
| Interior Height  | 80"         | 80"         | 80"         | 80"           | 80"           | 80"      | 80"      | 80"      |
| Awning Size  | 11'6"       | 18'         | 18'         | 20'           | 16'           | 14'6"    | 14'6"    | 12'6"    |
| <b>CAPACITIES</b>                                      |             |             |             |               |               |          |          |          |
| Fuel (gallons) (Ford/Chevy)                            | 37/35       | 55/57       | 55/57       | 55/57         | 55/57         | 26.4     | 26.4     | 26.4     |
| LPG (pounds)   | 40.9        | 40.9        | 40.9        | 40.9          | 40.9          | 68.2     | 68.2     | 68.2     |
| Fresh Water (gallons)                                  | 39          | 33          | 33          | 33            | 40            | 40       | 42       | 40       |
| Waste Water (gallons)                                  | 26          | 25          | 25          | 25            | 22            | 38       | 34       | 38       |
| Gray Water (gallons)                                   | 26          | 33          | 37          | 23            | 22            | 34       | 38       | 34       |
| Water Heater (gallons)                                 | 6           | 6           | 6           | 6             | 6             | 6        | 6        | 6        |
| Furnace (BTUs)   | 25,000      | 25,000      | 25,000      | 25,000        | 25,000        | 25,000   | 25,000   | 25,000   |
| Exterior Storage Capacity (cubic feet) (Ford/Chevy)    | 4/4         | 16/12       | 17/17       | 24/24         | 96/96         | 56       | 40       | 46       |

# 2009 CHATEAU CITATION & SPRINTER STANDARD & OPTIONAL FEATURES

| BODY CONSTRUCTION/<br>EXTERIOR  |     | B+  | SP  |     |     |  |   | BEDROOM/BATHROOM |   | TC  | SP                     |    |     |
|---|-----|-----|---|-----|-----|--|---|------------------|---|---|------------------------|----|-----|
| Fully welded tubular steel floor system   | S   | N/A | Infiniss leather driver and passenger captain's chairs  | O   | O   | Fantastic fan  | O                                       | O                | Queen-size innerspring mattress (N/A on 21BC, 24SB and 24SC)  | S   | S                      |    |     |
| Fully welded tubular aluminum floor system with Tek-Modo floor decking                                  | N/A | S   | Power driver's seat (Ford chassis only)   | O   | N/A | <b>GALLEY</b>  |   | B+               | SP  | Bedsread and pillow shams (N/A on 21BC and Sprinter 24SB) | S                      | S  |     |
| Curved sidewall design  | S   | N/A | Back-up monitor   | O   | S   | Double door refrigerator with stainless steel door inserts   | S                                       | S                | Bunk Beds (24SC only)   | N/A   | S                      |    |     |
| Fully welded tubular aluminum roof and sidewall cage construction                                       | S   | S   | <b>INTERIOR</b>   |     | B+  | SP   | 3-burner high-output cooktop with cover | S                | N/A   | Power bath vent   | S                      | S  |     |
| Vacu-Bond laminated roof, walls and floors with high-density block foam insulation                      | S   | S   | 80" interior ceiling height   | S   | S   | European 2-burner high-output gas range top with glass cover   | N/A                                     | S                | China bowl toilet   | S   | S                      |    |     |
| Slick fiberglass exterior sidewalls   | S   | S   | Electric Euro-skylight  | N/A | S   | Stainless steel power range hood   | S                                       | S                | Skylight in shower  | S   | S                      |    |     |
| Exterior graphics package   | S   | S   | Residential linoleum (galley, bath and entry way)   | S   | S   | Stainless steel convection microwave   | S                                       | S                | Shower with curtain and curved curtain rod (21BC only)  | S   | N/A                    |    |     |
| Exterior graphics/partial paint packages  | O   | O   | Metal entry grab handle   | S   | S   | Non-stainless steel convection oven (Canadian units only)  | S                                       | N/A              | Shower with pleated shower curtain (N/A on 21BC)  | S   | N/A                    |    |     |
| Full-body paint package with Gel-coat sidewalls   | O   | O   | Windshield privacy curtain  | S   | S   | Laminated countertops  | S                                       | S                | Shower with glass door  | O   | S                      |    |     |
| Premium one-piece TPO roof—Energy Star approved   | S   | S   | Cab-over bed ladder   | N/A | S   | Solid surface countertop with sink covers  | O                                       | O                | <b>SAFETY/CONVENIENCE</b>   |   |                        | B+ | SP  |
| Crown roof  | S   | S   | 13,500 BTU low-profile A/C in front   | S   | S   | Flip-up countertop extension (not available on 21BC)   | S                                       | N/A              | Entry door with deadbolt lock   | S   | S                      |    |     |
| One-piece fiberglass front and rear caps  | S   | S   | 15,000 BTU low-profile A/C in front   | O   | N/A | Large stainless steel single bowl sink with goose neck faucet  | N/A                                     | S                | Telephone jack  | S   | S                      |    |     |
| Manual patio awning   | S   | S   | Ceiling ducted A/C system   | S   | S   | Large double bowl sink   | S                                       | N/A              | System control center   | S   | S                      |    |     |
| Roof ladder   | S   | S   | Fluorescent ceiling lighting  | S   | S   | Pantry (24SB, 28BK and 31BH only)  | S                                       | S                | Smoke, LPG, carbon monoxide detectors   | S   | S                      |    |     |
| Exterior rear MEGA storage compartment (31BH only)  | S   | N/A | Directional reading lights  | S   | S   | Full extension drawer guides   | S                                       | S                | Fire extinguisher   | S   | S                      |    |     |
| Seamless roto-cast storage compartments   | S   | S   | Cinnamon maple cabinetry  | S   | S   | <b>ENTERTAINMENT &amp; ACCESSORIES</b>   |   |                  | B+  | SP  | Slide-out battery tray | S  | N/A |
| Flush mount radius luggage doors  | S   | N/A | Honey Birdseye maple cabinetry  | O   | O   | Front entertainment center with 32" LCD TV in cab-over   | S                                       | N/A              | Convenience package: keyless entry and valve stem extenders   | O   | N/A                    |    |     |
| Side hinged slab luggage doors  | N/A | S   | Cherry cabinetry  | O   | O   | Front entertainment center with 26" LCD TV in cab-over with home theater system and DVD player (24SA and 24SB only)                        | N/A                                     | O                | <b>ELECTRICAL &amp; PLUMBING</b>  |   |                        | B+ | SP  |
| Slide-out room awning   | S   | S   | European style curved cabinetry with hidden hinges  | S   | S   | 19" LCD TV over the door and coach stereo system with AM/FM tuner and DVD player (24SA and 24SB only)                                      | N/A                                     | S                | Guardian® RV Quietpac™ 40G generator (3600 watts) gas generator   | O   | N/A                    |    |     |
| Automatic electric entrance step  | O   | S   | Hardware with brushed nickel finish   | S   | S   | 26" LCD TV in the living area and coach stereo system with AM/FM tuner and DVD player (24SC only)  | N/A                                     | S                | Onan® RV MicroQuiet™ 4.0 (4000 watts) gas generator   | O   | N/A                    |    |     |
| Clear acrylic, entry grab handle  | S   | S   | Day/Night shades throughout   | S   | S   | Portable 19" LCD TV in bedroom - can be removed and mounted to exterior hook-ups (N/A on 21BC, 24SB and 24SC)                              | O                                       | O                | Onan® 3.6 (3600 watts) LP generator (std. with Ford chassis with diesel engine option and Sprinter chassis) | S   | S                      |    |     |
| Outside Shower  | O   | S   | Soft touch vinyl ceiling  | S   | S   | Home theater system with DVD player and radio tuner (req. front entertainment center option on 24SA and 24SB)                              | O                                       | O                | Onan® RV QD 3200 (3200 watts) diesel generator  | N/A   | O                      |    |     |
| <b>AUTOMOTIVE/COCKPIT</b>   |     | B+  | Booth dinette (N/A on 28BK and 24SC)  | S   | S   | (2) - LCD monitors with integrated DVD players and wireless headphones in the bunk area (24SC only)  | N/A                                     | O                | 30-amp service with shore line power cord   | S   | S                      |    |     |
| 14,500 GVWR Ford chassis with 6.0L PowerStroke™ diesel engine (26BE only)                               | O   | N/A | Barrel chair (31BH only)  | S   | N/A | Outside entertainment center with AM/FM stereo and CD player (N/A on 21BC)   | O                                       | O                | Automatic shoreline-to-generator transfer switch  | O   | S                      |    |     |
| AM/FM dash radio with large buttons, CD player and weather band tuner; iPod and Sirius® satellite ready | S   | S   | Leatherette Euro-recliner with ottoman (optional on 31BH only)(std. on 24SC and 28BK)                                       | O   | S   | Outside entertainment center includes 26" LCD TV with AM/FM stereo, CD/DVD player with iPod ready jack and speakers (N/A on 21BC and 24SA) | O                                       | O                | Battery disconnect switch   | S   | S                      |    |     |
| Power window and door locks   | S   | S   | Fabric jackknife sofa (N/A on 26BE and 28BK)  | S   | N/A | TV antenna and booster   | S                                       | S                | Emergency start switch  | S   | N/A                    |    |     |
| 3-Point driver and passenger seat belts   | S   | S   | Infiniss™ Leather jackknife sofa (N/A on 26BE and 28BK)   | S   | N/A | Cable TV prep  | S                                       | S                | Auxiliary house battery   | S   | S                      |    |     |
| Driver and passenger air bags   | S   | S   | Infiniss™ Leather U-shape dinette IPO booth dinette (24SA and 28BK only)  | S   | O   | High-definition satellite  | O                                       | O                | Second auxiliary house battery  | O   | N/A                    |    |     |
| Upgrade dash insert with drink tray   | O   | N/A | Fabric/Infiniss™ Leather U-shape dinette IPO booth dinette (24SA only)  | S   | O   | HD/DSS satellite prep  | S                                       | S                | 6-gallon gas water heater   | S   | N/A                    |    |     |
| Fiberglass running boards   | S   | S   | Fabric hide-a-bed sofa (29BG only)  | O   | N/A | <b>KEY:</b>  |   |                  |   |   |                        |    |     |
| Stainless steel wheel liners  | S   | S   | Infiniss™ leather hide-a-bed sofa with air mattress (31BH-with optional euro-recliner and ottoman, 24SB and 29BG only)      | O   | S   | B+ = 21BC, 26BE, 28BK, 29BG and 31BH   |   |                  |   |   |                        |    |     |
| Deluxe exterior mirrors   | S   | N/A | Fabric jackknife sofa with pedestal table IPO booth dinette (N/A on 21BC with Ford chassis or 28BK)                         | O   | N/A | SP = 24SA, 24SB and 24SC   |   |                  |   |   |                        |    |     |
| Heated, remote exterior mirrors   | O   | S   | Infiniss™ leather jackknife sofa with pedestal table IPO booth dinette (N/A on 21BC with Ford chassis or 28BK)              | O   | N/A |  |   |                  |   |   |                        |    |     |
| Spare tire kit  | O   | S   | Infiniss™ leather hide-a-bed sofa with air mattress and pedestal table IPO booth dinette (24SA and 26BE only)(std. on 24SC) | O   | O   |  |   |                  |   |   |                        |    |     |
| 3,500-lb. trailer hitch   | N/A | S   |   |     |     |  |   |                  |   |   |                        |    |     |
| 5,000-lb. trailer hitch   | S   | N/A |   |     |     |  |   |                  |   |   |                        |    |     |



**VEHICLE LOADING:** Every effort has been made to provide the greatest number of options for the recreation vehicle owner. Along with these choices comes the responsibility to manage the loads that are imposed by the choices so that they remain within the manufacturer's specified chassis weight limits. Do not overload the recreation vehicle.

**IMPORTANT:** Towing capacity may vary by chassis model, floorplan, options and loading of the vehicle. This may result in a towing capacity which is less than the maximum capacity of the hitch. Do not exceed the vehicle's Gross

Combined Weight Rating (GCWR), or the hitch rating. A separate functioning brake system is required for any towed vehicle or trailer weighing more than 1,000 lbs. (450 KG) when fully loaded. Liquid capacities and weights are approximations only.

**WARNING:** This information is intended as a guide only. Weights of individual vehicles may vary. Consult your owner's manual and weight sticker affixed to each vehicle for complete loading, weighing, and towing instructions. Actual filled LP capacity is 80% of listing due to safety shut-off required on tank.

**WARRANTY:** This vehicle is provided with a one-year, 15,000-mile limited warranty and a three-year, 45,000-mile limited structural warranty. Chassis, component part and appliance manufacturers issue limited warranties covering those portions of the vehicle not covered by the limited warranties issued by Four Winds International. To learn what portions of the vehicle are excluded from coverage under the limited warranties issued by Four Winds International, please contact your selling dealership or Four Winds International directly, or review the warranty packet inside the vehicle.

Product information, specifications, and photography in this brochure were as accurate as possible at time of printing. Photographs may contain some features that are optional on your vehicle. Since we continually strive to improve our products, actual products may differ. The manufacturer reserves the right, at any time, to make changes in product design, materials, component specifications and pricing, without notice. All capacities are approximate and dimensions are nominal. Some features or options may be different or unavailable in Canada.