

CLASS C MOTORHOMES

# CONCORD

by Coachmen



# CONCORD





**CONCORD** INTERIOR APPOINTMENTS



Pop-up Kitchen  
Charging Station



300DS shown with Cocoa Ash cabinets and Linen décor w/Optional Fireplace • Residential Countertop Space w/Double Bowl Sink and Cover.



## CONCORD CLASS C MOTORHOMES

The Concord provides a luxurious and convenient solution to both traveling and RVing. This smart travel-minded motorhome is equipped and built with an attitude of providing the best in form, fit and function. Outside, Concord boasts color-infused fiberglass curved sidewalls with sleek, stylish molded front and rear fiberglass caps giving it a distinctive high-end look with an aerodynamic, easy-to-drive profile. Inside, there's an emphasis on clean lines, luxurious appointments and comfort. Driving a Concord says you want the best in styling, amenity and handling. For over 50 years, Coachmen has been providing a product you can rely on. You'll take pride in ownership of one of the top selling brands in the industry.



**BEDROOM:** 60" wide queen bed with standard upgraded Serta mattress • Large wardrobes and closets • Panoramic rear window • Pleated day/night shades • 24" LCD TV w/DVD (option) • TV prep (standard)

**KITCHEN:** Hardwood cabinet door and drawer fronts • 1-piece, self-edged Thermofoil countertops • Sealed burner range w/Slim Line vent **LIVING:** LED lighting throughout • Day/night shades throughout • Upgraded furniture and fabrics • Congoleum® Designer Series flooring • Front entertainment center with 32" LCD TV, DVD player and sound bar • Integrated back-up monitor and AM/FM Stereo/CD Player/Bluetooth (GPS ready) • Swivel pilot and passenger seats (optional) • Even Cool ceiling ducted A/C System



## CONCORD INTERIOR APPOINTMENTS



Seating areas convert into sleeping areas • Large windows • Booth seating with Dream Dinette • Seat belts at every occupancy seat • Thermofoil dinette tops • Convection oven • LED Interior lights • Bedroom power vents • 3-burner gas range with sealed burners and optional removable carpet

300TS shown with Cocoa Ash cabinets and Linen décor



# CONCORD STANDARDS AND OPTIONAL FEATURES



Coachmen's Even Cool™ air conditioning system is ducted through the crowned, vacuum-bonded roof. The system uses AMOCO insulated ductwork with radiused corners to provide maximum cooling efficiency.

TPO roof membrane – lightweight, durable and easy to maintain.



Molded fiberglass front and rear caps w/integrated LED Lighting add a sleek automotive touch.



Slide room awnings (where applicable) to protect your slide room from debris.

1 1/2" thick aluminum cage construction, color-infused, hi-gloss fiberglass sidewalls. (standard)



Privacy windshield cover (optional).



Long Arm Heated Exterior Mirrors w/Remote



LED Clearance, marker and tail lights



Firestone Ride Rite air assist suspension



Azdel SuperLite™ sidewall substrate – lightweight, durable and moisture resistant.

Stainless steel wheel inserts

Fiberglass running boards & fender skirts



Concord's one-touch power awning features adjustable arms for ease of use.



Standard ONAN 4.0kw gas generator gives you 110v power when shoreline power is not available.



Exterior Entertainment Center w/32" LCD TV/Stereo/DVD and Speakers. (optional Luxury Package)



Solar Panel Plug-in Connection (Solar panel sold separately)



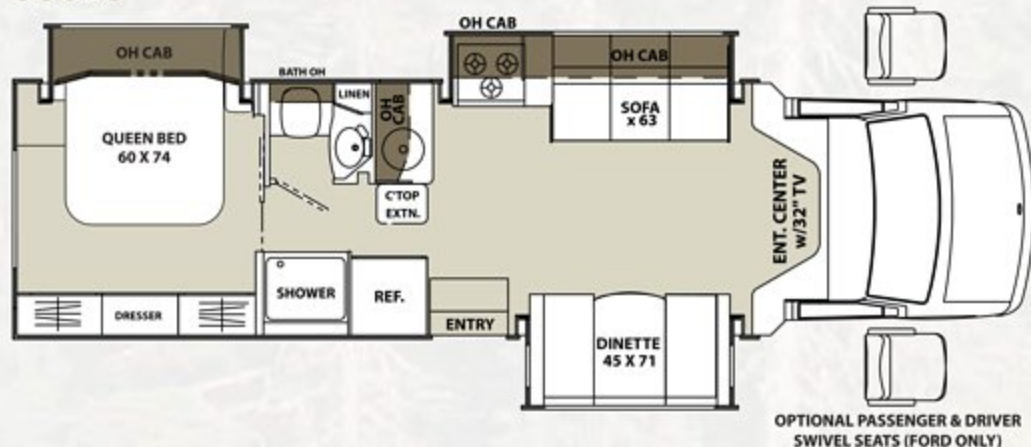
Power entry step with 80" entry door and auxiliary battery box.



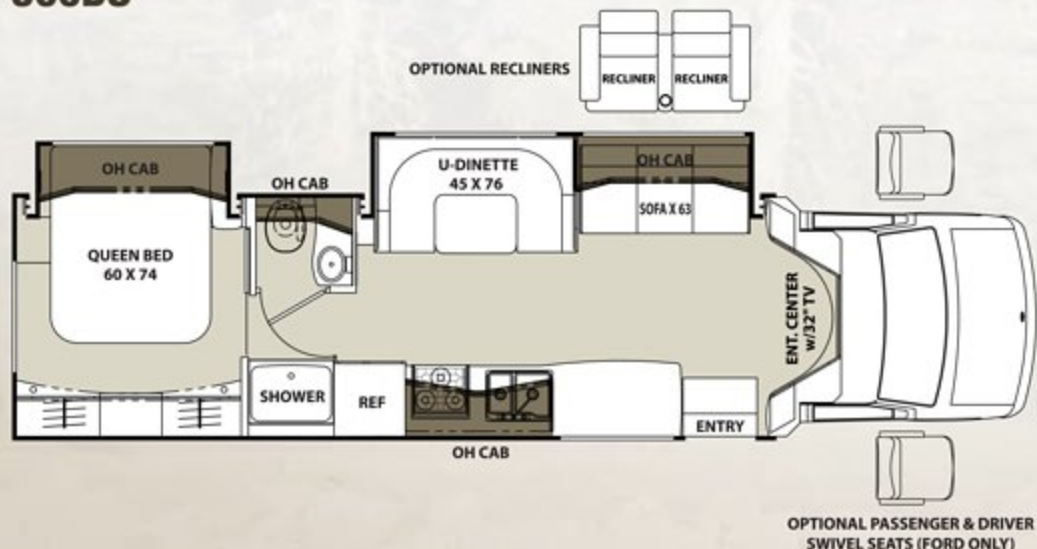
Fresh water fill, city hook-up, black water flush panel and pump switch winterize.



**300TS**



**300DS**



**SPECIFICATIONS**

MODEL	300TS	300DS
CHASSIS	4500-CHEVY / E450-FORD	4500-CHEVY / E450-FORD
ENGINE	V8-6.0L / V10-6.8L	V8-6.0L / V10-6.8L
HORSE POWER	324 / 305	324 / 305
TORQUE	373 / 420	373 / 420
WHEEL BASE	209" / 208"	224" / 223"
GVWR* (LBS.)	14,200 / 14,500	14,200 / 14,500
GCWR* (LBS.)	20,000 / 22,000	20,000 / 22,000
UVW* (APPROX. LBS.)	12,000 / 12,100	11,900 / 12,000
CCC (APPROX. LBS.)	2,200 / 2,400	2,300 / 2,500
GAWR FRONT (LBS.)	4,600 / 5,000	4,600 / 5,000
GAWR REAR (LBS.)	9,600 / 9,600	9,600 / 9,600
INTERIOR HEIGHT	6' 6"	6' 6"
EXTERIOR WIDTH	8' 0"	8' 0"
EXTERIOR HEIGHT (W/ A/C)	10' 8"	10' 8"
EXTERIOR LENGTH (W/ HITCH)	31' 3" / 30' 10"	33' 3" / 32' 9"
HITCH WEIGHT (LBS.)	5,000 / 7,500	5,000 / 7,500
FUEL CAPACITY (GAL.)	57 / 55	57 / 55
LP CAPACITY (LBS.)	85	85
FRESH WATER CAPACITY (GAL.)	41	41
WATER HEATER CAPACITY (GAL.)	6	6
GREY TANK CAPACITY (GAL.)	53	53
BLACK TANK CAPACITY (GAL.)	28	28
EXTERIOR STORAGE (CU. FT.)	36	43
AWNING LENGTH (FT.)	20'	19'

**GVWR (Gross Vehicle Weight Rating)** is the maximum permissible weight of the unit when fully loaded. It includes all weights, inclusive of all fluids, occupants, cargo, optional equipment and accessories. For safety and product performance do NOT exceed the GVWR.

**GCWR (Gross Combined Weight Rating)** is the maximum permissible loaded weight of your motor home and any towed trailer or towed vehicle. Actual GCWR of this vehicle may be limited by the sum of the GVWR and the installed hitch receiver maximum capacity rating; see hitch rating label for detail.

**GAWR (Gross Axle Weight Rating)** is the maximum permissible weight, including cargo, fluids, optional equipment and accessories that can be safely supported by each axle.

**UVW (Unloaded Vehicle Weight) \*** is the typical weight of the unit as manufactured at the factory. It includes all weight at the unit's axle(s), including full fuel, all fluids and LP Gas. The UVW does not include cargo, fresh potable water, additional optional equipment or dealer installed accessories.

\*Estimated Average based on standard build optional equipment.

**CCC (Cargo Carrying Capacity) \*\*** is the amount of weight available for fresh potable water, cargo, passengers, additional optional equipment and accessories. CCC is equal to GVWR minus UVW. Available CCC should accommodate fresh potable water (8.3 lbs per gallon). Before filling the fresh water tank, empty the black and gray tanks to provide for more cargo capacity.

\*\* Estimated average based on standard build optional equipment

Each Coachmen motorhome is weighed at the manufacturing facility prior to shipping. A label identifying the unloaded vehicle weight of the actual unit and the cargo carrying capacity is applied to every Coachmen motorhome prior to leaving our facilities.

The load capacity of your unit is designated by weight, not by volume, so you cannot necessarily use all available space when loading your unit.

Actual towing capacity is dependent upon your particular loading and towing circumstances, which includes the GVWR, GAWR and GCWR as well as adequate trailer brakes. Please refer to the Operator's Manual of your vehicle for further towing information.



## STANDARD

### WARRANTY

- Motorhome – 12 Month/ 12,000 mile limited warranty
- Chassis Warranty – See Chassis Owners Manual
- Travel Easy Roadside Assistance

### AUTOMOTIVE/EXTERIOR/CONSTRUCTION

- Deluxe Chassis Package
- Wood Grain Dash
- Driver & Passenger Air Bags
- Leatherette, Reclining Driver & Passenger Seats
- Cruise Control
- Tilt Steering Wheel
- Dash Air Conditioning
- Power Windows & Locks
- Removable Cab Carpeting
- Vacu-Bond Laminated 2" Steel Floor
- Vacu-Bond Laminated 1-1/2" Curved Aluminum Sidewalls
- Vacu-Bond Laminated Crowned Aluminum Roof w/TPO Exterior Surface
- Steel Entry Step Box
- Slam Latch Trunk Doors
- Emergency Start Button
- Curved Entrance Door w/Window & Deadbolt Lock
- Roto-cast Rear Warehouse Trunk Box w/Plasti-Cote Side Boxes
- LED Rear Storage Trunk Light
- Molded Fiberglass Front Cap w/LED Accent Lighting
- Molded Fiberglass Rear Cap
- Upgraded Exterior Range Vent
- Rear Exterior Roof Ladder
- Spare Tire
- Backup Camera
- Firestone Ride-Rite Rear Air Bags

### INTERIOR APPOINTMENTS

- Cocoa Woodgrain Cabinetry
- Hardwood Cabinet Door & Drawer Fronts
- Glass Insert Cabinet Doors (In Select Areas)
- Cabinet Hardware - Satin Nickel
- Roller Bearing Metal Drawer Guides Throughout
- Congoleum "Designer Series" Flooring Throughout
- Booth Dinette w/Dream Dinette Mechanism (300TS)
- U-Dinette (300DS)
- Single Child Tether at Forward Facing Dinette Seat
- Jackknife Sofa
- Soft Touch Ceiling (Hard Board Ceiling in Slideouts)
- Living Room 12" x 24" LED Light Panel w/Dimmer Control
- Upgraded "Shaker Style" Bath Door
- Upgraded Slideout Facer Board
- Interior Safety Grab Handle at Entrance Door
- Vinyl Padded Up and Angle Pads
- Pleated Day-Night Shades Throughout
- Tinted Safety Glass Radius Slider Windows
- Upgraded Seating Foam Pak and Sew Style
- Decorative Wall Mirrors

### INTERIOR EQUIPMENT

- Bedroom TV Prep
- Jack Wing TV Antenna
- LP Leak Alarm
- Smoke Detector
- Carbon Monoxide Detector
- Fire Extinguisher
- Pre-wired for Satellite Dish Thru Exterior Coax Input

### GALLEY

- Atwood 3 Burner Cooktop
- Cooktop Decorative Backsplash
- Convection Oven - Lower Cabinet Mounted
- Flush Mount, Double Door Refrigerator w/Raised Hardwood Inserts
- Double Bowl Kitchen Sink & Sink Cover
- Deluxe, Recessed Slim Line Range Hood
- Satin Nickel Kitchen Faucet w/Sprayer

### BATH AND WATER

- Water Works Panel w/Winterization & Black Tank Flush
- Swing Tube Termination Center w/Built-in Hose Storage
- Waste Termination Center Easy Access Door
- Exterior Shower
- Glass Shower Door
- Molded Plastic Shower Pan & Surround
- Satin Nickel Shower Head & Faucet
- Shower Skylight
- Single Bowl Bathroom Sink
- Satin Nickel Single Lever Bathroom Faucet
- Bathroom Medicine Cabinet w/Vanity Mirror & Makeup Light Bar
- Satin Nickel Towel Ring, Toilet Paper Holder & Robe Hooks
- Porcelain Foot Flush Toilet - Parchment
- Atwood 6-Gallon Gas/Electric DSI Water Heater
- Power Bath Vent Fan
- Demand Water Pump

### SLEEPING

- Queen Bed - 60" x 74"
- Upgrade Serta Mattress
- Bedspread & Pillow Shams
- Headboard
- LED Directional Reading Lights Above Bed
- Interior Cab Privacy Curtain

### ELECTRICAL/HEATING/AC

- Bed Area 110V CPAP Ready Area & 12V/USB Charging Station
- Exterior TV Ready Compartment
- Exterior Illuminated Acrylic Safety Grab Handle
- Exterior LED Porch Light
- Systems Command Center
- "Easy Access" Auxiliary Battery in Step-well
- Emergency Start Switch
- Power Roof Fan (Living Room)
- Entrance Step Well Light
- GFI Circuits (Kitchen, Bathroom, Exterior)
- Auxiliary Battery Disconnect
- Wall Mounted Thermostat
- "Even Cool" Roof Air Ducting System

- 13,500 BTU Low Profile Ducted Roof Air Conditioner
- 30,000 BTU Ducted Furnace
- 30 Amp Power Cord
- 55 Amp Electronic Converter

### CONCORD BANNER EDITION (Mandatory Option)

- Hi-gloss Color Infused "Carmel" Lamilux 4000 Sidewalls
- Azdel "Super Lite" Composite Sidewall
- Fiberglass Running Boards & Rear Fender Skirts
- LED Taillights w/Center Bar & LED Running Lights
- LED Ceiling Lights Throughout
- 4.0KW Onan Gas Generator
- Front Entertainment Center - 32" LCD TV/DVD, Stereo & Sound Bar
- Stainless Steel Wheel Liners
- Bluetooth Touch Screen Radio w/Built-in Backup Monitor (GPS Ready)
- Power Awning w/Vinyl Weather Guard
- Exterior Solar Panel Connection ("Furrion" Solar Panel Sold Separate)
- Pop-up Kitchen Recept & USB Ports
- Heated Remote Exterior Mirrors
- Automatic Power Entrance Step
- Slideout Awnings (N/A 300TS Dinette Slideout)
- 5,000 lb. Towing Hitch w/7-way Plug (Chevy Chassis)
- 7,500 lb. Towing Hitch w/7-way Plug (Ford E450 Chassis)

## OPTIONAL

### STAND ALONE OPTIONS

- Removable Coach Carpet
- Bedroom Power Vent Fan
- Automatic 4-Point Hydraulic Leveling Jacks
- Aluminum Rims
- Driver Swivel Seat - Ford or Chevy
- Passenger Swivel Seat - Ford or Chevy
- Exterior Windshield Cover
- Electric Fireplace (300DS)
- Cockpit Folding Table (Ford Only, Recommended with Swivel Seat Option)
- Dual Recliners (300DS)
- Bedroom TV - 24" LCD TV/DVD
- King Tailgater Autotracking Satellite System w/Dish Network Receiver
- Automotive Full Body Paint Exterior
- Painted Chassis Cab
- Ultra Leather Package (Includes Cockpit Seats; Sofa or Optional Recliners)
- Canadian Z240 RV Conversion Compliance (Ford Chassis Only)
- Canadian Chassis Compliance - Speedo & Lights (Ford Chassis Only)
- Canadian CD-MVSA (Mandatory For Canadian Dealers)

### CONCORD LUXURY PACKAGE

- Exterior Entertainment Center w/32" LCD TV, DVD & Stereo
- "Easy Access" Dual Auxiliary Battery in Step-well
- Side View Cameras
- 15,000 BTU Low-Profile Ducted Air Conditioner w/Heat Pump
- Camping Cozy Package (Heated Tank Pads & Upper Tank Valves)

*Standards and Options subject to change without notice.*

## DÉCOR



OXFORD

LINEN

COCOA ASH



## CONCORD EXTERIOR FEATURES



**Color-infused Fiberglass  
(Standard)**



**Vermillion  
Full Body Paint (optional)**



**Toffee  
Full Body Paint (optional)**



**Black Sand  
Full Body Paint (optional)**



### Travel Easy™ Roadside Assistance

RVing is easier with Coachmen's Travel Easy™ Roadside Assistance provided FREE the first year of ownership to those who purchase a New Coachmen RV. Administered by Coach-Net, this service provides you with 24/7 operational, technical and emergency road service coverage. Also included is towing, fuel delivery, jump starts, lockout service, tire changes, mobile mechanic and unlimited technical assistance. Anywhere. Anytime. Travel Easy™ is the security of knowing that help is an easy phone call away.



### Free One Year Membership – Coachmen Owners' Association

Coachmen is proud to sponsor the largest manufacturer sponsored camping club in North America ... Coachmen Owners' Association (COA). COA provides a broad breadth of value propositions for our owners including: planned trips/ tours and rallies at bulk rate discounts, free trip routing, free campground directory, free Easy RVing magazine, theme park discounts, fuel discounts, mail forwarding, a dedicated COA web site, local and state club activities and Caravan Chapter membership opportunities. Most importantly, COA enhances the Coachmen ownership and RV lifestyle experience.

*Every new Coachmen RV buyer is eligible for a 1 Year FREE membership in the Coachmen Owners' Association. It all adds up to an easy ownership experience!*



### Coachmen RV Owner "Digital Kit" App

Now you can have your Owners Manual with you wherever you are. Download our free App from iTunes and you'll have the information at your fingertips.



Learn More  
Scan this barcode using  
a QR Reader on your  
smart phone to learn  
more about Forest River.



A Berkshire Hathaway company.

All information contained in this brochure is believed to be accurate at the time of publication. However, during the model year, it may be necessary to make revisions and Coachmen reserves the right to make all such changes without notice, including prices, colors, materials, equipment and specifications as well as the addition of new models and the discontinuance of models shown in this brochure. Therefore, please consult with your Coachmen dealer and confirm the existence of any materials, design or specifications that are material to your purchase decision. 2/16

©Copyright 2016 Coachmen RV a Division of Forest River Inc - All Rights Reserved.



Forest River, Inc. encourages our customers to purchase their Forest River products from a local dealership whenever possible for the following reasons:

- 1) Forest River, Inc. dealers are independently owned and operated businesses so priority service and scheduling is at their discretion and is often provided to customers that purchased their unit at that dealership.
- 2) Purchasing locally allows customers to establish meaningful relationships with a dealer, enhancing the RV experience through assistance with product questions, user tips or RV regulations for your state or country, and much more!
- 3) Canadian customers must meet requirements to bring an RV purchased out of the country to their home. These requirements may involve additional inspections and certifications, taxes and fees. Your local Canadian Dealer is a professional at meeting these requirements.
- 4) Scheduling timely warranty repairs and adjustments through a local dealership provides far greater flexibility and convenience to you, the customer!

It is the goal of Forest River, Inc. that all of our RV owners fully enjoy the RV experience and that customer satisfaction meets or exceeds their expectations!

### Your **CONCORD** Dealer



**Coachmen**  
Leader to the Great Outdoors.

423 N. Main Street • P.O. Box 30  
Middlebury, IN 46540

To learn more about Coachmen RV and our products and see how Coachmen is making the easy life easier, call us toll free at (800) 353-7383, or visit [www.coachmenrv.com](http://www.coachmenrv.com)