

CROSSROADS

Recreational Vehicles

CAMEO



CAMEO



CE-3701RD Kitchen

Cameo: a household name since 1968

With luxurious living, Cameo meets the highest standards of excellence that continue to please thousands of loyal customers.



CE-3701RD
Dining Area



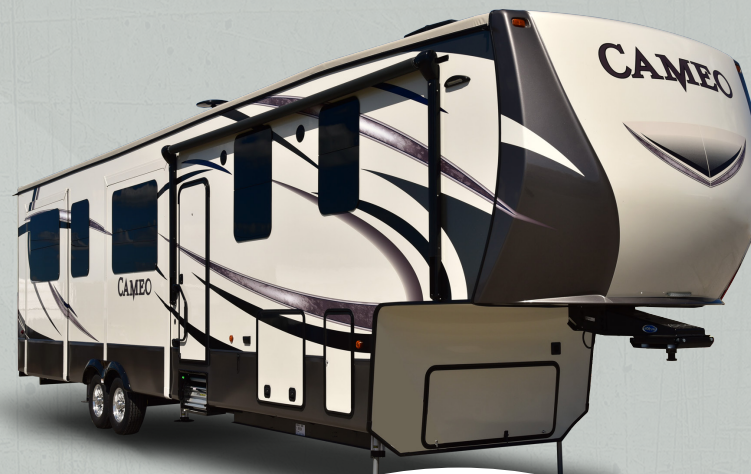
CE-3701RD Bedroom



CE-3801RL Bedroom
Wardrobe Slide

Quality, Uniqueness and Convenience

Cameo transfers its elegant and prestigious exterior to the interior as well.



CE-3701RD
Living Area



CAMEO



At-Home Comfort in Every Inch.

- 1. 3" Lighted Crown Molding
- 2. Oversized Panoramic Windows
- 3. Residential Refrigerator
- 4. Free Standing Table & Chairs
- 5. Oversized Pantry

CE-3701RD Kitchen in Matterhorn Decor Shown Above

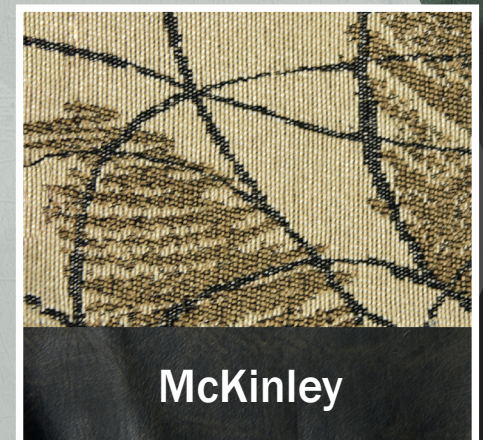
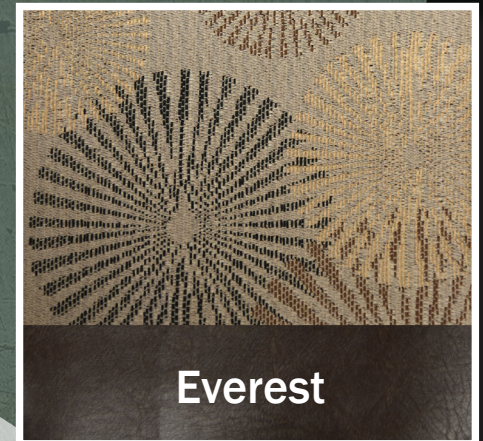


3701RD Kitchen
Full Size Chef's Pantry



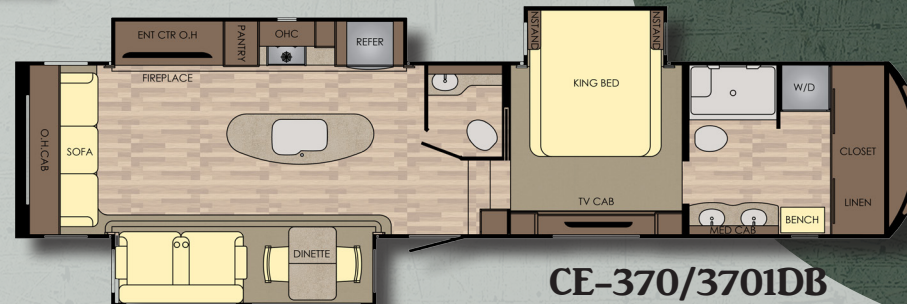
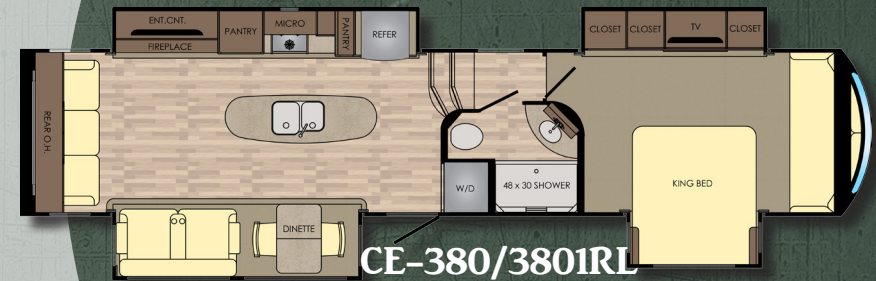
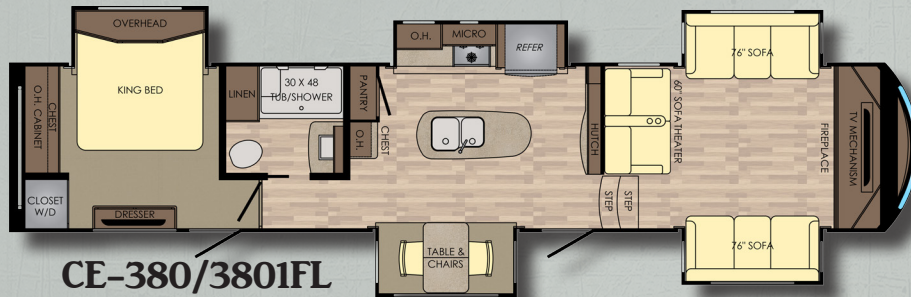
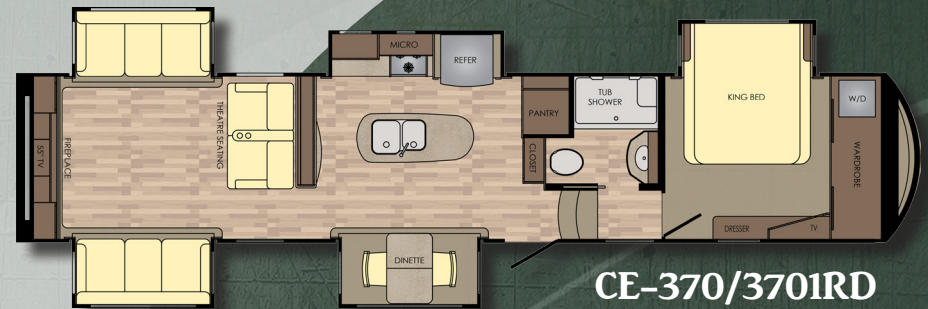
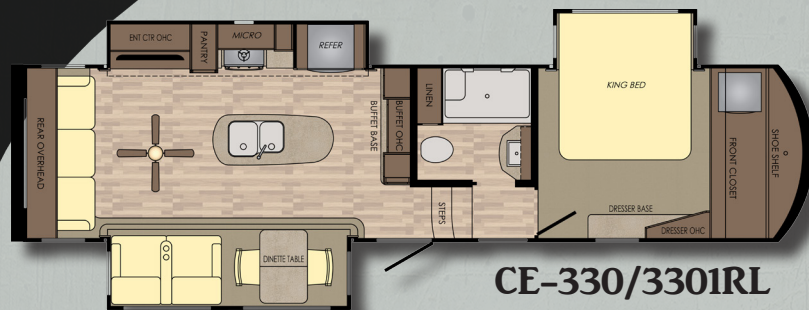
iN-Command Smart
Automation System

FABRIC OPTIONS



Cameo's
Master Suite

3801RL Bedroom
with Opposing
Slides & Day
Bed Lounge w/
Front Windshield



Unique Space & Comfort

With 5 floorplans to choose from, you're sure to find the right fit for your family!

FLOORPLANS & SPECS

The "1" at the end of the model number denotes a residential refrigerator.

| MODEL | CE-330/3301RL | CE-370/3701RD | CE-380/3801FL | CE-380/3801RL | CE-370/3701DB |
|----------------------|---------------|---------------|---------------|---------------|---------------|
| DRY WEIGHT | 11822 | 13814 | TBD | 13404 | TBD |
| GVWR | 16155 | 16860 | TBD | 17040 | TBD |
| CARRYING CAP. | 4333 | 3046 | TBD | 3636 | TBD |
| HITCH WEIGHT | 2158 | 2862 | TBD | 3042 | TBD |
| LENGTH | 35' 2" | 41' 5" | 42' 1" | 40' 0" | TBD |
| EXT. HEIGHT WITH A/C | 13' 3" | 13' 3" | 13' 3" | 13' 3" | TBD |
| FRESH WATER | 62 Gal | 62 Gal | 62 Gal | 62 Gal | TBD |
| BLACK WATER | 44 Gal | 45 Gal | 45 Gal | 45 Gal | TBD |
| GRAY WATER | 89 Gal | 88 Gal | 136 Gal | 88 Gal | TBD |
| TIRE SIZE | ST235/80R16E | ST235/80R16E | ST235/80R16E | ST235/80R16E | TBD |

STANDARDS AND OPTIONS



STANDARDS

CABINETS

- Maple Hardwood Cabinets
- Full Extension Ball Bearing Drawer Glides
- Hidden Hinges

EXTERIOR DESIGN

- Wireless Backup Camera Prep
- MORryde Rubber Pin Box
- Aerodynamic Profile
- Increased Turning Radius
- LED Hitch Pin Light for Easy Hookup
- Large Exterior Scare Light

EXTERNAL DOCKING STATION

- Exterior Hot/Cold Shower
- City Water Hook Up
- Black Tank Flush System
- Cable TV & Satellite Hook-Ups
- All Tank Pull Handles
- Winterization Valve
- 110v Outlet
- Water Pump - on/off Switch

EXTERNAL STORAGE

- Slam Latch Baggage Doors w/ Magnetic Catches
- Tough Ply Floor Covering
- Pass Through Storage
- Additional Utility Storage
- Bauer Keyed Alike System Throughout

FLOOR CONSTRUCTION

- 5/8" Floor Decking
- 3" Aluminum Framing - 11" on Center
- Seamless Residential Heat Ducts
- Enclosed & Heated Water Lines

WALL CONSTRUCTION

- 2" Laminated Sidewall
- High Gloss Gel Coat Fiberglass Exterior
- EGS Steel Backers for Cabinets

ROOF CONSTRUCTION

- 5" Stamped Steel Galvanized Roof Trusses
- Double Truss at each A/C
- 3/8" Roof Decking
- Full Walk-on Roof
- 5" Radius Metal Roof Cap
- One Piece Alpha Ply II Roof Material

WINDOWS

- Flush Mount Frameless Exterior Windows
- 80% Deep Dark Tint
- 100% UV Protectant

FRAME/TIRES/SUSPENSION

- 16" E-Range Tires
- 8 Lug Aluminum Rims
- 2" Self Adjusting Brakes
- 16" E-Range Spare Tire
- MORryde Pin Box
- Hydraulic Slide-Out
- 12" I-Beam Frame w/ 10" I-Beam Drop
- 7,000lb Axles
- Hydraulic 6pt w/ 1 Touch Auto Level
- Aluminum Quad Entry Step
- 2" Receiver Hitch
- MORryde CRE 3000 Suspension w/ Wet Bolt

TANKS/LP GAS SYSTEM

- (2) 30lb LP Bottles w/ Auto Change Over
- 62 Gallon Fresh Water
- 88 Gallon Grey Water (VBM)
- 45 Gallon Black Water (VBM)

ENTRY CLOSET

- Coat & Boot Closet w/ Hooks
- iN-Command System Access

POWER

- iN-Command Smart Automation System
- Solar Prep
- Progressive 90 Amp/12V DC Converter
- 50 Amp Detachable Power Cord
- Dual Battery Box
- 110V Exterior Receptacle
- Battery Disconnect Switch
- 1,000 Watt Inverter w/ Residential Refer

HEAT & A/C

- Seamless One Piece in-Floor Duct
- 35,000 BTU Furnace
- Heat & A/C Duct in Bathroom
- 15,000 BTU A/C in Living Room & Kitchen
- 15,000 BTU A/C w/ Heat Pump in Bedroom & Bathroom
- Quiet Residential A/C Returns
- New Flat Front Fireplace w/ LED Accents Heats 1,000 ft²

SLIDE ROOMS

- 7' Slide Room Interior Height
- Hydraulic Operation w/ Manual Override
- Selector Valves for Slide Rooms

ENTERTAINMENT

- 55" HD TV in Living Room
- Multi-Zone Audio/Video Soundbar w/ Sub
- Pre-Wired for Winegard Satellite Systems
- (2) Marine Grade Exterior Speakers in Sidewalls
- Samsung Blu-Ray Player

APPLIANCES

- Residential Refrigerator w/ 1000W Inverter
- 3 Burner Flush Mount Stove w/ Glass Cover
- 22" Deluxe Baker's Oven
- 30" OTR Microwave w/ Exhaust Fan
- 12 Gallon Gas/Electric DSI Water Heater
- Central Vac

INTERIOR/LIGHTING

- 5" Round LED Ceiling Lights
- 4" Round LED Accent Lights
- Pendant Kitchen Light w/ Ceiling Accents
- Decorative Dinette Fixture

KITCHEN

- LG Solid Surface Sink Covers
- Stainless Steel 60/40 Double Sink Basin
- Pots & Pans Storage
- 13 Gal Trash Can
- Large Residential Pantry
- High Rise Faucet w/ Pull Out Spray Hose
- Max Air Fan

LIVING ROOM

- 84" Residential Sleeper Sofa (Converts to King Bed) (VBM)
- 5 Function Tru-Sit Heated & Massage Theatre Seating w/ Hot/Cold Drink Holders
- Night Shades Throughout

BEDROOM

- King Bed
- Exclusive Dual Opposing Bedroom Slides - "Master Suites" (380/3801RL)
- 32" LED HD TV in Bedroom
- Night Roller Shades in Bedroom
- 2 Night Stands Each w/ a 110V Outlet
- i-Cool Memory Foam Mattress

CLOSET

- Spacious Walk in w/ Built in Shelving
- Prepped for W/D

BATHROOM

- 1 Piece Fiberglass Shower
- Porcelain Foot Flush Toilet
- Large Mirrored Medicine Cabinet
- Domed Skylight in Shower
- Large Linen Closet
- Adjustable Shower Head

OPTIONS

- Induction Cooktop
- Convection Microwave
- 18 ft³. "RV" Refer ipo Residential Refrigerator
- Dual Pane Windows
- Generator Prep
- 5.5 Onan LP Marquis Gold (includes gen prep)
- Heating Pads for Holding Tanks
- Max Air Power Vent in Bathroom

LUXURY TOURING PACKAGE

- Power Awning w/ LED Light
- 15K BTU Quiet A/C
- 55" LED TV w/ Soundbar in Living Room
- 32" LED TV in Bedroom
- Recessed LED Lighting Throughout
- Night Roller Shades
- 30# LP Tanks
- Washer/Dryer Prep
- Black Tank Flush
- Enclosed Heated Holding Tanks
- 30" OTR Microwave,
- Tinted Frameless Windows
- 50 Amp Service w/90 Amp Converter
- i-Cool Memory Foam Mattress
- MORryde Rubber Pin Box
- MORryde CRE 3000 Suspension System

CAMEO

CrossRoads RV offers a one year limited warranty on all products from the date of purchase. This applies to units sold in the United States and Canada by authorized CrossRoads Dealers.

There are few brands in the RV Industry as iconic as Cameo. For generations Cameo has stood as the choice for hard-working individuals who are ready to enjoy the fruit of their labor.

In continuing that tradition, the new Cameo offers industry leading 4 season construction, best-in-class innovation and amenities, and designer inspired decors.



Choose camping the way it should be.
Choose Cameo.

www.crossroadsrv.com • 1140 W. Lake St Topeka, IN 46571 • (260) 593 - 3850

DISCLAIMER: Product information is as accurate as possible as of the date of publication of this brochure. All features, floor plans, and specifications in this brochure are subject to change without notice. Please also consult CrossRoads' web site at www.crossroadsrv.com for more current product information and specifications. Tow Vehicle Disclaimer, CAUTION: Owners of CrossRoads recreational vehicles are solely responsible for the selection and proper use of tow vehicles. All customers should consult with a motor vehicle manufacturer or their dealer concerning the purchase and use of suitable tow vehicles for CrossRoads products. CrossRoads disclaims any liability or damages suffered as a result of the selection, operation, use or misuse of a tow vehicle. CROSSROADS' LIMITED WARRANTY DOES NOT COVER DAMAGE TO THE RECREATIONAL VEHICLE OR THE TOW VEHICLE AS A RESULT OF THE SELECTION, OPERATION, USE OR MISUSE OF THE TOW VEHICLE. REFERENCE CROSSROADS RV COMPANY OWNERS MANUAL FOR LIMITED WARRANTY DETAILS. *Length is defined as the distance from the centerline of hitch pin/coupler to rear bumper of trailer.

