

THE DIPLOMAT

A NEW LUXURY DIESEL

MOTORHOME FROM MONACO

a place for new beginnings



MONACO COACH CORPORATION



The Oceanside Suite Slide shows the full dimension of slide-out living comfort. Plush carpet and ceramic tile floors, beautiful cabinetry, comfortable sofas and a full size Recliner chair invite you to relax in style. (Recliner Chair is optional. Swivel Barrel Chairs are standard.)

EXPECT GENEROUS ROOM FOR LIVING

The new DIPLOMAT offers three spacious contemporary floorplans. Two of the new floorplans feature our *Suite Slide* design. Here you can expand your living, dining and kitchen area in minutes. Expanded or not, you always enjoy full use of your living area including the operation of all built-ins including the microwave oven and three burner range.

Comfort is at the top of the list whichever floorplan you choose. Features such as the 19" color TV and VCR in the living area and the 13" color TV in the bedroom are standard,

along with two 13.5M BTU ducted low profile roof air conditioners.

Tasteful interior design beautifies your surroundings. Select from a choice of designer furnishings, fabrics and colors: *Cognac, Vintage Burgundy, Oceanside* and *Cedar Creek*. Each reflects Monaco's quality of design with beautiful cabinetry, smooth solid surface countertops and ceramic tile flooring as standard features. The new DIPLOMAT offers an environment that's beautiful to live in—and easy to maintain.



Enjoy the Diplomat's designer features: a full sized shower with brass trim and fixtures, ceramic flooring and wood cabinetry with solid surface countertops. In the queen size bedroom, you will enjoy beautiful wood cabinetry and closets, a built in color TV and graceful lighting fixtures.

FLOORPLANS

The new DIPLOMAT offers a selection of contemporary floorplan designs including both 36' and 38' Suite Slides.

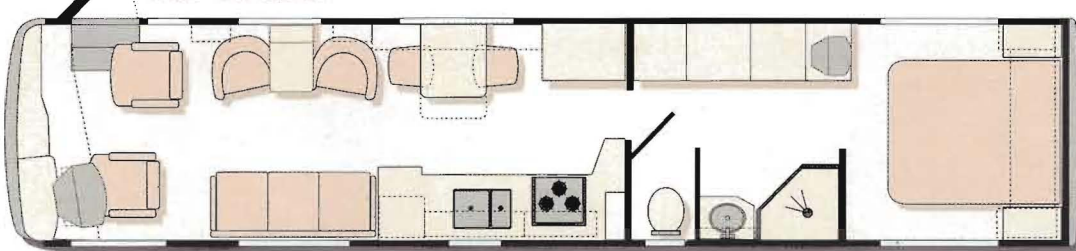
Beautiful Designer interiors are featured in your choice of four color decors.

36B DIPLOMAT SUITE SLIDE



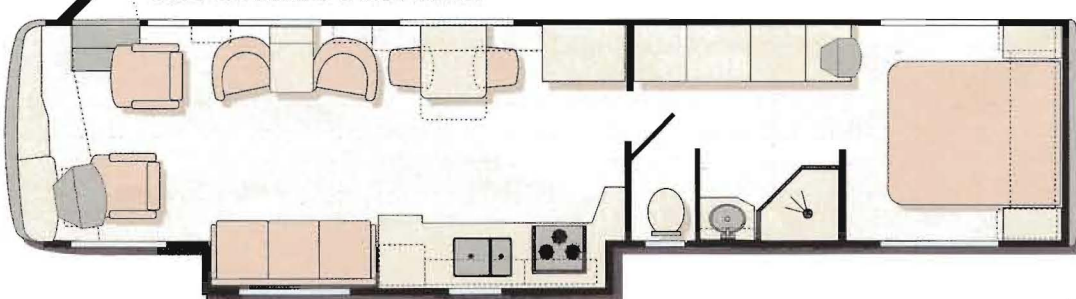
Oceanside

38C DIPLOMAT



Cedar Creek

38A DIPLOMAT SUITE SLIDE



Cognac

Vintage Burgundy



Specifications

Construction

Tubular Steel C-Channel Chassis Frame Construction
Aluminum Roof
Smooth Gel-Coat Fiberglass Exterior Walls (Polar White)
Front and Rear Molded Fiberglass Caps
Ozite Ceiling
Steel Framed Floor on Steel Trusses
Slide-Out Room w/Awning
Color Coordinated Vinyl Graphics and Paint (4 colors)
Exterior Storage Compartments
Baggage Doors with Integrated Single-Handle Latches
Fiberglass Front and Rear Bumpers Integrated
Rear Ladder
Undercoating

Chassis/Engine/Suspension

ROADMASTER Chassis, Rear Radiator
Cummins 275hp ISB Engine
Torque: 660 lbs/ft max net at 1,600 RPM
Allison MD3060 6 Speed World Transmission/Electronic Shifter
100 gallon Fuel Tank
160 AMP Alternator
Full Air Suspension
Four Double Lobe Airbags in Front, Four Large Single Lobe Airbags in Rear
Stainless Steel Wheel Liners
Radial Tires: P255.70R 22.5
Full Air Brakes (Drums) w/Automatic Slack Adjusters
5,000 lb. Hitch Receiver w/Skid Bar and Six-Point Connector
Exhaust Brake

Cockpit Features

Dash Instrument Gauges
Tilt/Telescoping VIP 18" Steering Wheel
Power Controlled Heated Exterior Mirrors
Manual Hydraulic Leveling Jacks - 3 Point
Rear Vision Camera
Vinyl Faced Driver and Passenger Recliner Seats - Pedestal

Optional

Six-way Power Driver Seat

Appliances and Accessories

8 cubic ft. Two-Way Refrigerator
17" High Output 3-Burner Range
.9 cubic ft. Microwave Oven
Systems Monitor Panel
TV Antenna and Booster w/12V Receptacle and TV Jack(s)
Electronic Tune AM/FM Cassette Stereo w/Four Speakers
Digital Satellite System (Pre-Wire only)
19" Color TV w/Remote Control in Living Area
13" Color TV w/Remote Control in Bedroom Area
VCR w/Video Switching Box
Cable TV Hook-up and Telephone Jacks

Optional

8 cubic ft. Two-Way Refrigerator w/Ice Maker
4-Door Refrigerator/Freezer w/Ice Maker
Combination Washer/Dryer
Washer/Dryer Prep
Deluxe CD Player

Interiors

Four Decor Colors: Cognac, Vintage Burgundy, Oceanside and Cedar Creek
Natural Light Cabinets
Wood Square Raised Panel Cabinet Doors
Solid Surface Kitchen Countertop w/Solid Surface Edge
Stainless Steel Sink
Laminate Vanity Countertop w/Solid Surface Edge
Queen Bed (60x74 Head to Rear)
Easy Bed Sofa w/Drawer

Fixed Dinette Table w/Two Chairs
Fabric Swivel Barrel Chair
Mini-Blinds throughout
Nylon Carpeting and Pad in Bedroom and Living Area
Ceramic Tile in Bath
Ceramic Tile in Kitchen

Optional

Day/Night Shades in Living Area and Bedroom
J-Lounge (not available in 36 B model)
Recliner Chair
Two Additional Folding Chairs
Booth Dinette

Electrical Systems and Lights

55 AMP 12V Electronic Power Converter
1500 Watt Inverter
50 AMP 120V Distribution Panel and Cord
Onan 6.5 KW LP Generator
Four 6V Deep Cycle Batteries
Fluorescent Lights in Ceiling

Optional

Diesel Generator Prep

Plumbing and LP Systems

6 Gallon LP Gas/Electric Water Heater
One-Piece Fiberglass Shower
Glass Shower Door
China Toilet w/Sprayer
No-Fuss Flush Holding Tank Rinsing System

Safety Features

Egress Windows

Windows, Doors and Awnings

Slider Dual Pane Windows
Radius Front Entrance Door w/Clear Glass
Screen Door
Front Door Awning
Acrylic Patio Awning (Aluminum Arms and Cover)

Heating, Vents and Air Conditioning

Two 13.5M BTU Ducted Low Profile Roof Air Conditioners
Dash Heating and Air Conditioner System w/Defroster
35M BTU Electronic Ignition Furnace in 36' Slide Out
40M BTU Electronic Ignition Furnace in 38' and 38' Slide Out models
12V Attic Fan in Bath (Non-thermostat)

Optional

12V Attic Fan in Kitchen

Weights

Gross Vehicle Weight Rating: 29,000 lbs.
Gross Combined Weight Rating: 34,000 lbs.
Front Gross Axle Weight Rating: 10,000 lbs.
Rear Gross Axle Weight Rating: 19,000 lbs.

Measurements: (Heights are based on static load equal to Gross Vehicle Weight Rating)

Overall Width: 100.5 inches
Overall Height: 11 ft. 11 inches
Interior Height: 6 ft. 7 inches
Wheelbase: 216" (36' Slide Out); 242" (38' model and 38' Slide Out)

Tank Capacities:

Water Heater: 6 gal./10 gal.
Grey Tank: 60 gallon
Black Tank: 30 gallon
Fresh Tank: 100 gallon
Fuel Tank: 100 gallon
LP Tank: 47.5 gallon Liquid Capacity -Tank manufacturer's listed water capacity (WC). Actual filled LP capacity is 80% of listing due to safety shutoff required on tank.

Optional

Second LP Tank: 25.3 gallon Liquid Capacity

SOMETHING NEW UNDER THE SUN

The new Diplomat by Monaco. A full-sized luxury diesel motorhome with a pedigree of engineering excellence and design integrity that has made Monaco famous.

And because this is a luxury diesel motorhome by Monaco, it does what all Monaco motorhomes do best: provide a perfect balance of performance features matched to refined living comfort.

The Diplomat's clean, uncluttered design will impress you inside and out. Smooth fiberglass exterior walls are easy to care for with a long lasting gel-coat finish. Our ROADMASTER Raised Rail chassis allows for large pass-through storage bays and incorporates a 100 gallon fuel tank. Many thoughtful details will add to your

traveling pleasure, from the in-dash rear vision camera to a hitch receiver rated to handle 5,000 pounds.

The raised rail design in Monaco's heavy duty ROADMASTER chassis is combined with a full air suspension system. Four outboard mounted double lobe airbags in front and four large single lobe airbags in the rear provide greater coach stability, smooth, even handling and an exceptionally comfortable ride.

We invite you to take a test drive soon to discover for yourself the engineering excellence built into *every* Monaco motorhome.



Cummins' 275hp ISB turbo diesel engine defines durability with electronic engine controls and high pressure fuel injection.



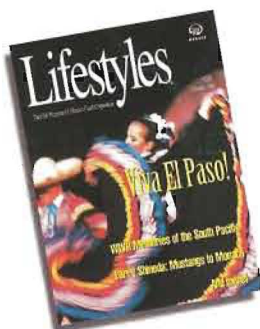


THE MONACO DIFFERENCE At Monaco, we know you're looking for a luxury motorhome that will enhance your lifestyle and also give you years of carefree travel. Our 170-person service and warranty staff are aided by computerized production records and a warranty tracking system that enables us to identify individual customer's needs and provide solutions quickly and efficiently—just one part of our effort to make all your experiences with Monaco the very best.



Emergency Road Assistance 24 hours a day, 365 days a year is provided to Monaco owners anywhere they travel in the U.S. or Canada.

24 HOUR EMERGENCY SERVICE The Monaco Roadside Assistance Program will give you additional peace of mind. It provides emergency roadside assistance 24 hours a day, 365 days a year to Monaco owners anywhere they travel in the U.S. or Canada. Whether you're just locked out, need a tire change, need fuel or require a tow to the nearest qualified RV repair facility. Just dial the toll-free Emergency Road Service number and you can be assured that a professional RV emergency repair and towing specialist will respond to your call.



Lifestyles, published by Monaco, highlights interesting trips, places to see, club activities and news about special events throughout the year.

MONACO CLUBS, RALLIES AND MORE When you join one of the Monaco owners clubs, you can't help but notice that meeting and traveling with friends adds something special to your trip. Monaco sponsors many club activities including half a dozen large rallies held during the year. Here, entertainment, great food, and exciting tour excursions are blended with seminars, free technical service, workshops, and the latest innovations in motorhome travel.

GET THE GRAND TOUR AT MONACO! Monaco is proud to invite you to visit our manufacturing facilities in Oregon and Indiana. Just call us toll free at 1-800-634-0855 for easy directions and to confirm plant hours.

YOUR DIPLOMAT DEALER

040 MOTORHOMES
4500 CONVOY ST.
SAN DIEGO, CA 92111
(619) 297-9100
040 MOTORHOMES
6644 DOWNS RD. #100
IRVING, CA 92614
(714) 952-7872



MONACO COACH CORPORATION

MONACO MOTORHOMES • HOLIDAY RAMBLER MOTORHOMES AND TOWABLES •
MCKENZIE TOWABLES • ROYALE COACH CONVERSIONS
91320 Industrial Way, Coburg, OR 97408 Toll Free (800) 634-0855 or (541) 686-8011
Indiana Division: 606 Nelson's Parkway, Wakarusa, IN 46573 • Toll Free (800) 650-7337
Monaco is traded on the NASDAQ Stock Exchange under the listing MCCO
Visit our websites at www.monaco-online.com and www.holidayrambler.com