

Dolphin



1 9 9 7
M O T O R H O M E S

Enjoy Affordable Elegance With Dolphin Motorhomes...

Only Dolphin brings you high-line styling, extensive standard amenities, and long-term value at such affordable prices. Outstanding choices are another Dolphin tradition - you can select from five newly designed models with expansive 102" widebodies. And yes, we offer slide-out rooms for extra spaciousness. The only place you won't see much is on the option list, since Dolphins come with a wealth of standard equipment.

Always eager to improve on an already excellent product, National RV has plenty to offer you for 1997. This exceptional motorhome features a bus-type front end with full fiberglass cap and single-piece, high-gloss fiberglass Mende Board sidewalls. Enhancements include a new backlit dash to make it easier to see at night and sensational new interior fabrics to accent the beautiful wood package. We've added an access light for viewing under the hood, as well as a new central thermostat to provide extra-efficient climate control.

The more you know about motorhomes, the more you'll appreciate Dolphin. Instantly, this full basement RV stands apart with the

bright new look achieved by exciting ribbon exterior graphics and distinctive surf blue accents on the lower body. Many features are equally attractive, but far less obvious. For instance, our holding tank flush system is designed to make cleaning easier and quicker.

Inside and out, amenities abound. Catering to your traveling convenience, sculptured fiberglass baggage doors open ample outside storage with easily accessed illuminated compartments. Master suites, galleys, and baths are among the finest you'll find. And typical of National RV products, our value-packed Dolphin motorhomes invite your closest comparison.



Model 535S



Expand Your Possibilities

Dolphin's slide-out rooms are an incredibly popular choice among Dolphin owners. Within minutes after you stop for the night, you instantly gain loads of additional space right where you need it most. The slide-out contains an attractive and cozy dinette booth - table and chairs are available as options - and an exceptionally comfortable sofa/sleeper combination. Dolphin's spacious floor plans are always a delight, at their roomy best when you choose one of our slide-out models.



Model 5335

Gourmet's Galley

The galley deserves special comment. Now there's more storage space than ever with the addition of a china cabinet. Work space has grown as well, with an expanded Corian counter top in a U-shape that contributes greatly to meal preparation ease. The cook top is neatly recessed, and counter height is perfect for the average-size chef. We've also incorporated a new GE microwave oven with built-in range hood and light. And we've even thrown in an improved kitchen sink. (It's bigger!) Handsome oak trim is utilized throughout. Be sure to check the fabulous fit and finish of Dolphin's expertly crafted cabinetry.

Complementing the beauty of our traditionally popular raised panel cabinetry is a clever new folding Corian counter top which conceals the range when not in use. An optional extension is available for extra counter space.



Inviting Interiors Grace Every Dolphin...

Dolphin motorhomes are big on comfort and interior amenities, so come in and look around! Once inside, tall folks in particular will appreciate the extra 3" of headroom we've added. Recently we've done some redecorating to make you feel completely at home. Ease into an ultra-comfortable deluxe recliner chair or the stylish sofa. An upgraded fluorescent lighting system brightens up the living areas, while a ducted floor heating system is a nice, cozy addition. What a great place to relax at the end of another glorious day on the road!



National RV's intriguing designer interiors completely pamper you with quality woven fabrics, deluxe carpeting, sound-dampening fabric ceilings, plus day/night shades with an elegant valance in the living room. Decorative mirrored doors in the lounge contribute to the overall feeling of openness, as do our space-saving pocket doors.

Quality touches are at every turn, including cedar-lined closets, raised panel oak frame cabinetry, and oak trim throughout. For easy, trouble-free operation, our all-wood drawers feature ball bearing glides.



Elegant fabrics impart an inviting designer touch to every Dolphin model.



Model 534



Dolphin's Elegant Master Suite

Dolphin is known for its innovative floor plans, and maximum use of interior space is showcased in our smartly designed bedroom. A larger mirror, graced with attractive Dolphin graphics, really opens up the room. Exclusive this year on most models is a queen bed measuring 60" x 80". Besides bringing you all the comforts of home, your Dolphin master suite provides plenty of space for you to pack your personal belongings. Together, the expansive 3-door wardrobe and night stand offer a dozen storage drawers.



Large Garden Bath

Lounge in an inviting tub, as you reflect on the pleasures of today's travels. You're literally surrounded by luxury. A domed skylight really opens up the room, greatly enhancing the feeling of spaciousness. Elegance and convenience abound. The attractive glass-enclosed shower is replete with handsome gold tone fixtures and trim, sinks are enlarged, and even a hair dryer is included as a standard amenity.



Model 534S & 535S

Specifications

VEHICULAR DRIVING AREA

- ☐ Chevrolet 454 CID, 7.4L, V-8 EFI
- ☐ Ford 7.5L, V-8 EFI
- ☐ L29 - 290 HP Vortec Engine
- ☐ Engine Oil Cooler
- ☐ Transmission Oil Cooler
- ☐ Overdrive Automatic Transmission
- ☐ Power Steering/Brakes
- ☐ Electric Fuel Pump
- ☐ Auxiliary Start System
- ☐ Alternator AMPS:
105 Amp Chevrolet, 130 Amp Ford
- ☐ Radial Tires (7)
- ☐ Tilt Steering Wheel
- ☐ Cruise Control
- ☐ In-Dash Heat & Air Conditioning
- ☐ Full Panoramic Wrap-Around Tinted Windshield
- ☐ Panoramic Windshield Wipers w/Intermittent Speed Control
- ☐ Map Light
- ☐ Cigarette Lighter
- ☐ Reclining Bucket Seats w/Swivel
- ☐ Protector Sun Visors
- ☐ AM/FM Auto Reverse Stereo Cassette
- ☐ Wheel Covers
- ☐ Deluxe Power Mirrors w/ Heat
- ☐ Class III Trailer Hitch
- ☐ Dash Fans

EXTERIOR FEATURES

- ☐ Full Fiberglass Front and Rear Caps
- ☐ High Gloss Mende Board Side Walls
- ☐ Insulated Fiberglass Baggage Doors
- ☐ Rubber Roof
- ☐ Brushed Stainless Steel Front Bumper
- ☐ Radius Windows
Sliders in Living Room
Jalousie in Bedroom/Galley
- ☐ Tinted Windows w/Screens
- ☐ Awning Rail

- ☐ Dead Bolt Lock
- ☐ Water Fill w/ Switch Over Valve
- ☐ Lighted Cargo Bins
- ☐ Outside Porch Light
- ☐ Radius Entrance Door
- ☐ Insulated Cargo Bin Floors
- ☐ Outside Shower
- ☐ Black Tank Flush System
- ☐ Rain Gutter w/ Drip Spouts
- ☐ Power Entry Step
- ☐ Roof Rack & Ladder
- ☐ Slide-out Awning (533S, 535S & 536S)

INTERIOR FEATURES

- ☐ Porcelain Sink in Galley
- ☐ Recessed Fluorescent Lights
- ☐ Oak Framed Raised Panel Cabinet Doors in Lounge
- ☐ Decorative Mirrored Doors in Lounge & Bedroom
- ☐ Hardwood Plank Floor in Galley
- ☐ Oak Trim Throughout
- ☐ Deluxe Highline Carpet & Pad Throughout
- ☐ Pantry
- ☐ Sliding Privacy Door
- ☐ Built-In Waste Can
- ☐ Oak Drawer Fronts

Specifications / Dimensions / Capacities

DIMENSIONS	532	534	533S	535S	535S	536S	536S
Chassis	Ford	Ford	Ford	Chevrolet	Ford	Chevrolet	Ford
Overall Length	34' 4"	35' 9"	33' 6"	36'	36'	36'	36'
Overall Height w/Air	11' 7"	11' 7"	11' 7"	11' 8"	11' 8"	11' 8"	11' 8"
Overall Width	8' 6"	8' 6"	8' 6"	8' 6"	8' 6"	8' 6"	8' 6"
Interior Height	6' 7"	6' 7"	6' 7"	6' 7"	6' 7"	6' 7"	6' 7"
Interior Width	8' 2 1/2"	8' 2 1/2"	8' 2 1/2"	8' 2 1/2"	8' 2 1/2"	8' 2 1/2"	8' 2 1/2"
CAPACITIES (Gallons)	532	534	533S	535S	535S	536S	536S
Fresh Water	100	100	100	100	100	100	100
Hot Water	6	6	6	6	6	6	6
Waste Water Hold. Tank**	50	50	50	50	50	50	50
Gray Water Hold. Tank**	50	50	50	50	50	50	50
LP Gas Capacity	24	24	24	24	24	24	24
Fuel Capacity	75	75	75	80	75	80	75
WEIGHTS/DIM.	532	534	533S	535S	535S	536S	536S
Wheel Base	228"	228"	208"	208"+43"	208"+43"	208"+43"	208"+43"
GCWR - lbs.	25,000	25,000	25,000	21,000	25,000	21,000	25,000
GVWR - lbs.	17,000	17,000	17,000	19,500	20,000	19,500	20,000
Unloaded Vehicle Wt.* - lbs.	14,720	14,880	n/a	17,010	17,210	16,550	17,360
Net Carrying Capacity - lbs.	2,280	2,120	n/a	2,490	2,790	2,950	2,640

* Unladen weight includes full fuel, roof air conditioning, and microwave. The 533S, 535S, and 536S also include jacks and camera.

** Approximate capacities.

Floor Plans

- ☐ Color Coord. Mini Blinds w/Designer Valances
- ☐ Fabric Ceiling
- ☐ Color Coord. Bedspread, Shams & Pillows
- ☐ Beveled Dressing Mirror
- ☐ Skylight in Shower
- ☐ Single Lever Galley Faucet
- ☐ Fire Extinguisher
- ☐ Dinette Booth
- ☐ Recessed Cook Top
- ☐ Flush Corian Stove Top Cover
- ☐ Padded Dinette End Caps
- ☐ Coach Ceiling Vents
- ☐ Corian Galley Top & Sink Cover
- ☐ Day/Night Shades in Lounge Area
- ☐ Drink Tray

APPLIANCES & ELECTRICAL

- ☐ Generator: 5.5 KW
- ☐ Central Air: DuoTherm 2 - 13,500 BTU
- ☐ Microwave Oven (900 Watt)
- ☐ 6 Gallon DSI Hot Water Heater
- ☐ 19" TV w/ Remote
- ☐ TV Antenna w/ Amplifier
- ☐ Coffee Maker
- ☐ Smoke Alarm CO/LPG Detectors
- ☐ 110 Amp Deep Cycle House Battery
- ☐ Phone Jack
- ☐ Intellitec Runs Two Roof A/Cs on 30 Amp Service
- ☐ Hair Dryer
- ☐ Dust Buster
- ☐ Battery Disconnect Switch
- ☐ Second House Battery
- ☐ 8' Dometic Refrigerator
- ☐ TV Signal Switching
- ☐ Water Filter
- ☐ Water Heater By-Pass
- ☐ GFI Protected Electrical Circuit
- ☐ 120V/12V/ 55 Amp Power Converter

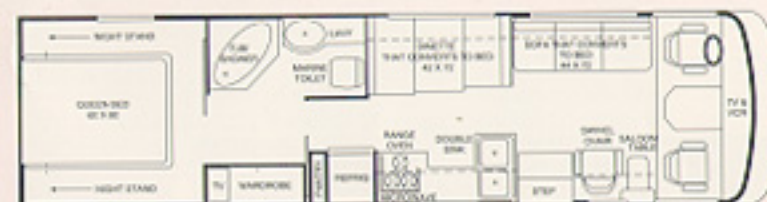
- ☐ Charger-55 Amp
- ☐ 3-Burner Cook Top
- ☐ Power Range Hood w/ Light
- ☐ Demand Water Pump
- ☐ Systems Monitor Panel to Measure Tanks, Battery & Propane
- ☐ Adjustable Reading Lamps
- ☐ Power Vent in Bath
- ☐ Cable TV Hookup
- ☐ 35,000 BTU Ducted Furnace

OPTIONAL FEATURES

- ☐ Ice Maker for 8' Refrigerator
- ☐ Upgrade to 10' Double Door Refrigerator w/ Ice Maker
- ☐ Thermostatically Controlled Exhaust Fan
- ☐ 21" LP Gas Oven
- ☐ VCR w/ Antenna Switch
- ☐ 13" TV in Bedroom - I10 Only
- ☐ Twin Beds
- ☐ Exterior Electric Horns
- ☐ Stainless Steel Wheel Liners
- ☐ Convection Microwave Upgrade
- ☐ AGE 9000 Awning
- ☐ 6-Way Power Driver Seat
- ☐ Alarm System w/ Remote
- ☐ Insulated Windows
- ☐ Privacy Decal In Shower
- ☐ CD Player
- ☐ Bedroom Stereo w/ Clock Radio
- ☐ Porcelain Toilet w/ Spray
- ☐ Washer Dryer
- ☐ Extra Wide Co-Pilot Chair
- ☐ Dinette Table w/ 4 Chairs
- ☐ Deluxe Recliner
- ☐ Counter Extension
- ☐ Canadian CSA Approval
- ☐ Hydraulic Leveling Jacks (Std 533S, 535S, 536S)
- ☐ Back-up TV Camera (Std 533S, 535S, 536S)



Model 532



Model 534



Model 533S



Model 535S



Model 536S

Built Better By Design

From the moment we opened our doors in 1963, National RV began building a reputation for superior products. Because we know that there are no shortcuts to quality, we have always insisted on the most thorough engineering, the best materials, and the finest craftsmanship.



National RV's lot of satisfied customers keeps growing, and so do our facilities. We've recently expanded for even more efficient production capabilities.



State-of-the-art fiberglass manufacturing holds to tight tolerances and achieves the highest levels of quality.



Extensive undercoating applied to each unit provides properly sealed compartments and enhances sound deadening.



After being aligned on the most advanced electronic equipment, every National RV motorhome is road tested for ride and handling.



Custom designed furniture receives its finishing touches in our factory to guarantee high levels of quality and comfort.



National RV's modern facilities are designed for smooth, error-free automated production every step of the way.



Each unit is thoroughly rain-tested before delivery. This important step helps assure a quality motorhome.

Dealer



24-Hour Toll-Free Help Line

As an original Dolphin owner, you can call toll-free, anytime, for expert advice on any problem you might have. (Good for one year from date of purchase. Non-transferable program can be extended for a nominal fee.)



Quality is Built Into Every Detail...

Dolphin's thoroughly insulated rubber roof assures your long-term comfort. Note also that our roofs have more steel cross members than most.



Check out Dolphin's handsome high-gloss gel-coat walls and sleek fiberglass rear cap with built-in spare tire compartment!

Dolphin



National R.V., Inc.
3411 N. Perris Blvd., Perris CA 92571 • 909-943-6007

Copyright © 1996, National R.V., Inc. 12/96 40M