

DURANGO

full-profile luxury fifth wheels

KZ
Est. 1972

DURANGO full-profile luxury fifth wheels



GENEROUS LUXURY *at an* **AFFORDABLE PRICE**

DURANGO offers the best of all worlds. If the highway calls but you still need space and creature comforts, Durango's got you covered. The all-weather insulation package keeps you comfy no matter the weather, and electric auto-leveling makes setup a breeze.

Sweeten the deal with upgrades, like heat and massage theater seating, full-size 18-cubic-foot refrigerator, central vacuum or off-the-grid solar package.

D333RLT : Slate décor

Solid hardwood
slideout fascia

PERKS OF HOME SWEET HOME

- glazed maple cabinetry
- solid surface countertops
- stainless steel sink and appliances
- 40-inch fireplace (D333RLT shown)



MASTER BEDROOM

features six-drawer dresser, a padded window seat bench with storage, and optional 32-inch TV. (D333RLT shown)

BATHROOM

generous his-and-hers vanity with stainless steel sinks and plenty of drawer and cabinet space (D333RLT shown)





Weathered-wood-look linoleum comes with a 3-year warranty against cold-cracking

COZY & STYLISH

- standard 40-inch fireplace
- facing sofas
- fully-equipped entertainment center, including HD LED flat panel TV with swing-arm bracket

CHEF'S APPLIANCE PACKAGE

includes a 3-burner stainless steel gas range with built-in oven and 30-inch convection microwave. Maple cabinetry with solid door fronts offers plenty of storage, and you'll appreciate the generous counter space and wide window. (D342FLQ shown)



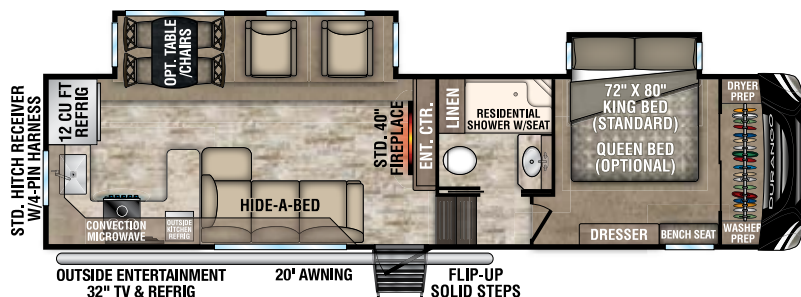
LUXURY BEDROOM

- 72 x 80-inch king bed
 - overhead storage and decorative shelving
 - USB ports, outlets and oversized light switches are all within easy reach
- (D342FLQ shown)



STAINLESS STEEL SINK with pull-down sprayer faucet and seamless SOLID-SURFACE COUNTERTOPS





D315RKD

CONSTRUCTION FEATURES

- 5-Sided 100% Aluminum Frame
- Steel Powder Coated I-Beam w/Drop-Frame Pass-Thru Storage
- R-11 2" Block Foam Bonded Sidewalls w/EGS Metal Backing Strips (to support all int. cabinets)
- Lamilux® Gelcoat Fiberglass
- Fully-Insulated Sliderooms
- Walk-On TPO Roof Membrane
- 5/8" Tongue & Groove, Screwed & Glued Plywood Floor Decking
- Fully-Vented Attic System
- Completely Heated Water System
- Pex® In-Floor Heated Waterlines & Kitchen Gray Pipes (all waterlines & drainlines are located above all insulation)
- Fully Heated & Enclosed Underbelly
- Radius Front Cap (for increased turning radius on short bed trucks)
- Extra-Reinforced Heavy-Duty Front Fiberglass Cap
- All Weather Insulation PKG (upgrades roof, floor, ceiling, endcaps & tanks to R-38)

EXTERIOR FEATURES

- Dexter® Axles w/Self Adjusting Brakes & Height Adjusting Hangers
- 8-Lug Heavy-Duty Aluminum Rims w/16" E-Range Nitrogen-Filled Radial Tires
- 100% Exterior LED Running Lights & Taillights
- LED Front Docking Light & Sewer Hookup Light
- Electric Power Awning w/LED Light Strip
- (2) 30 lb. Propane Bottles on Same Side of Coach for Easy Access
- Side-Mounted Sealed Battery Compartment
- Partially Painted Front Cap
- 50 AMP Service w/Marine Power Cord
- 15,000 BTU Ducted Roof A/C w/Pre-Wire for Optional 13,500 BTU Bedroom A/C
- 3" x 14" Foam-Core In-Floor Straight-Line Heating System w/35,000 BTU Furnace

- Deluxe Heated Water Convenience Center (incl. black tank flush, power fresh tank water fill, winterizing system, outside shower)
- Fully-Finished, Heated & Sealed Basement Storage Compartment
- 12 GAL Gas/Electric/DSI Hot Water Heater
- Swing-Away Assist Grab Handle
- Roof Ladder
- No-Slide Rubberized Basement Flooring
- Dual Lock Basement Storage Slam Latches
- Satellite Pre-Wire (roof & ground)
- Outside Speakers & Pre-Wire for Exterior TV
- Full-Perimeter Rain Gutter System (incl. rear & additional gutters over sliderooms)
- LP Quick Connect
- Under-Mount Spare Tire

LIVING ROOM/KITCHEN FEATURES

- Solid Surface Kitchen Countertops & Sink Covers w/Large Handholds
- Residential Stainless Steel Sink
- Pullout High Arching Faucet
- Storage Shelf under Kitchen Sink
- Heavy-Duty 100 LB Drawer Glides on Every Drawer
- Baltic Birch Drawer Boxes
- Kitchen Window (most models)
- All-Wood Lumber Core Screwed Cabinets w/Hardwood Doors
- 5" Brushed Nickel Cabinet Hardware
- 3/8" Re-Bond Carpet Pad w/22 OZ Residential Carpet Throughout
- XL Toggle Light Switches
- Large Ceiling Crown Molding
- All LED Ceiling & Cabinet Lights w/Multiple On/Off Switches
- Deluxe Residential-Style Furniture
- HD Flat Panel TV w/Swing Arm Bracket & Storage behind TV (most models)
- Adjustable Pantry Shelves (where applicable)
- All Kitchen OH Cabinets incl. Shelf

- 4" High Density Foam Cushions on all Booth Dinettes
- Ceiling Fan (where applicable)

BATHROOM/BEDROOM FEATURES

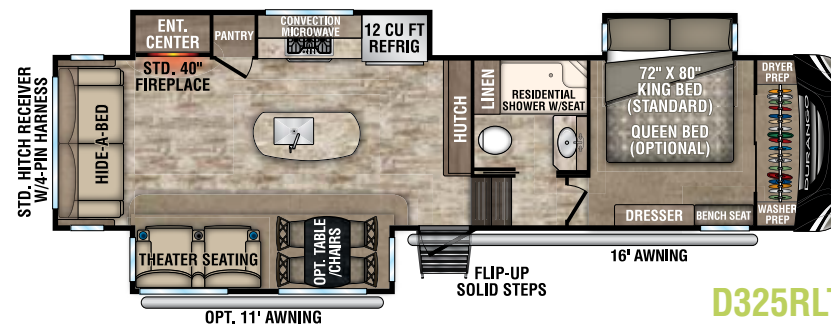
- Residential One-Piece Fiberglass Shower Stall w/Built-In Seat & Glass Doors
- Shower Skylight
- Porcelain Foot-Flush Toilet
- All LED Lights in Bed & Bath w/Multiple Large Switches
- Vent Fan in all Baths
- Large Linen Closet in Every Bathroom
- One-Level, Full-Height Bedrooms
- Padded Headboard w/Power Outlet Near Bed
- XL Under-Bed Storage
- Luxurious Bedspread
- Dual Drawers, Large Hanging Space
- Washer & Dryer Prep in Front Closet
- Bedroom TV Pre-Wire

OPTIONS (EXTERIOR)

- 2nd A/C Ducted (13,500 BTU)
- Dual Pane Windows (frameless)
- Wireless Backup Camera System - Observation
- "Off the Grid" Solar Package*
- Roto Flex Rubberized Pin Box
- Generator Prep
- 5.5KW LP Onan Generator (requires prep)
- 2nd LED Lighted Power Awning (D325RLT, D333RLT, D343MBQ)

OPTIONS (INTERIOR)

- 32" Bedroom LED TV
- F/S Dinette Table & 4 Chairs IPO Dinette
- Theater Seating w/Heat & Massage Features IPO Tri-Fold HAB (D347BHF)
- House Residential Refrigerator w/1200W Inverter (18 CU FT) IPO 12 CU FT Gas/Electric Refrigerator (N/A CSA option & D347BHF)
- Power Vent Fan in Bathroom
- Queen Black Label Pillowtop Mattress 60" x 80"
- Central Vac System (N/A D347BHF)



D325RLT

- Hide-A-Bed Sofa IPO Lower Bunk (D347BHF only)
- *Cannot get House Residential Refrigerator w/"Off the Grid" Solar Package

KZ ADVANTAGE PACKAGE (MANDATORY OPTION) EXTERIOR

- 4 Point Auto Electric Leveling
- Polar White Gelcoat Exterior Fiberglass
- Painted Fiberglass Front Cap
- 5-Sided Aluminum Framing
- Flip-Up Entry Steps (main entry)
- 50 AMP Service w/2nd A/C Prep
- 15K Ducted A/C
- 5/8" T&G Plywood Floor
- Key-Alike for Baggage & Entry Doors
- Friction Hinge Entry Door
- Screenshot Feature on Entry Door
- Large Folding Grab Handle
- Undermount Spare Tire
- Equa-Flex® Suspension
- Nitrogen Filled Tires
- Battery Disconnect
- Black Tank Flush
- Backup Camera Prep
- Roof Mounted Solar Prep
- All Weather Insulation Package (heated, insulated & enclosed underbelly plus foil in floor, roof, front, rear)
- 2" Towing Receiver Hitch w/4 Pin Wire Harness Connection (3,000 lb tow rating & 300 lb hitch rating)
- Roof Ladder
- Fully Vented Attic System w/2 Attic Vents

INTERIOR

- Maple Glazed Cabinetry
- Glazed Solid Hardwood Slideout Fascia
- Solid Surface Countertops w/Deep Undermount Stainless Steel Kitchen Sink w/Sink Cover
- Chef's Appliance Package (2-piece SS gas cooktop w/built in oven & 30" convection microwave)
- Kitchen Skylight w/Shade
- Power Vent Fan in Main Area
- 36" Pullout Storage Bins in Booth Dinette

- Tri-Fold HAB Sofa
- 3 Motion Sensor Lights (entry, closet, basement)
- 40" Wideview Fireplace
- LED TV
- Multiple Media Stereo w/DVD/Bluetooth/NFC Wireless Connectivity
- 12V Dual USB Charging Station
- Night Roller Shades
- Porcelain Foot Flush Toilet
- Stainless Steel Oval Bathroom Sink
- Plywood Bed Base
- Upgraded King Black Label Pillowtop Mattress 72" x 80"

KZ CONVENIENCE PACKAGE (MANDATORY OPTION) EXTERIOR

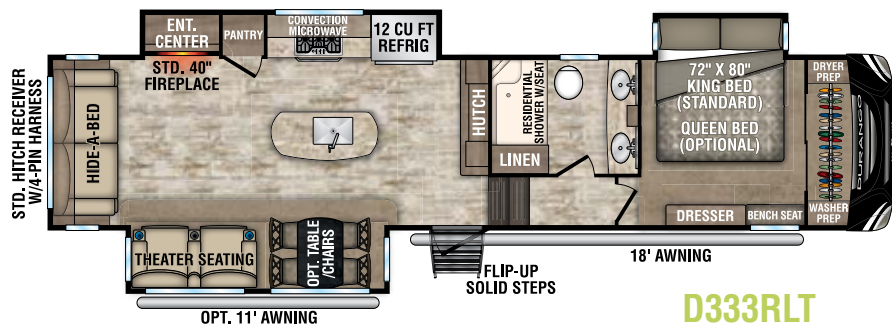
- Power Awning w/LED Light Strip
- 16" Tires w/Aluminum Wheels
- Magnetic Catches for Baggage Doors
- Directional HDTV Antenna
- LED Lights in Exterior Speakers

INTERIOR

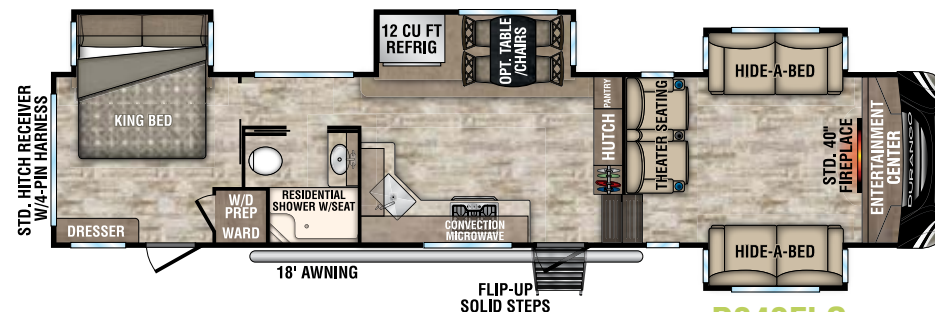
- Residential Grade Linoleum
- 12 CU FT Gas/Electric Refrigerator w/Temperature Controls
- Stainless Steel Residential Kitchen Faucet w/Pulldown Sprayer
- Surfex Wood Step in FW Hallway
- Dark Accent Trim on Corners/Entry Doors
- Electric Outlet in Bunk Area

BONUS FEATURES

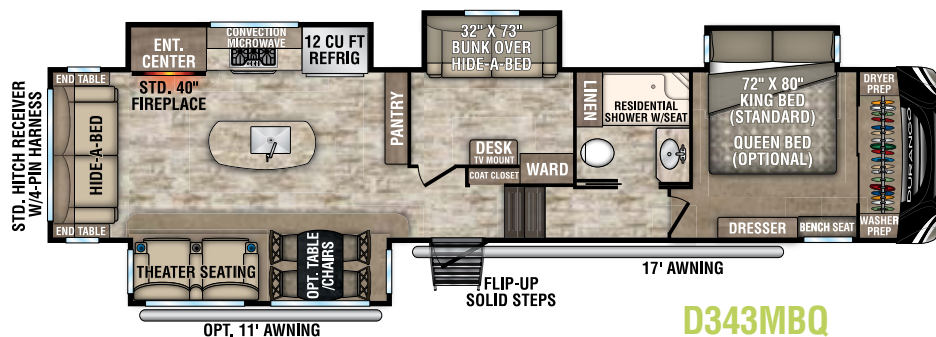
- 2-Year Limited Warranty
- Lightest high-profile luxury fifth wheels in the industry (average weight is 11,000 LBS)
- KZ has received the Dealer Satisfaction Index Award for 18 years
- KZ's 47 years of stable, dedicated manufacturing experience, coupled with its predominant Amish workforce, heritage and commitment to superb quality, allow us to produce the best value luxury fifth wheel available.



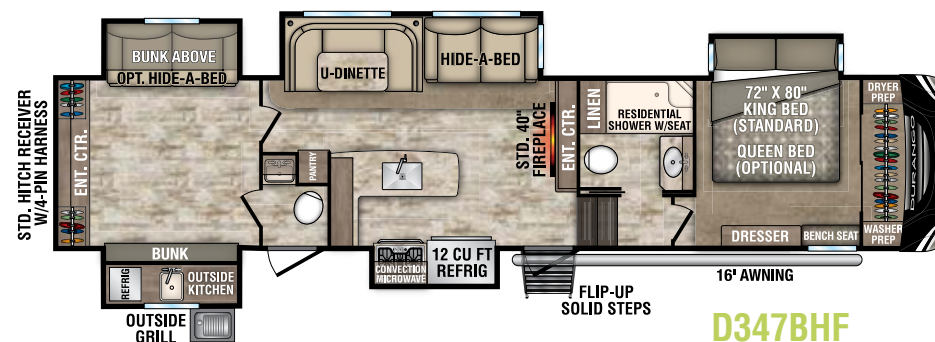
D333RLT



D342FLQ



D343MBQ



D347BHF

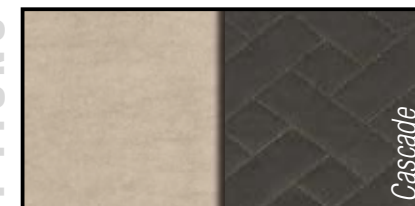
Fifth Wheels	D315RKD	D325RLT	D333RLT	D342FLQ	D343MBQ	D347BHF
UVW (Unloaded Vehicle Weight)*	10,100	10,400	10,700	11,440	11,790	12,440
Dry Hitch Weight*	1,920	1,950	2,020	2,370	2,300	2,110
Dry Axle Weight*	8,180	8,450	8,680	9,070	9,490	10,330
NCC (Net Carrying Capacity)	2,400	2,600	2,300	3,060	2,710	2,060
GVWR	12,500	13,000	13,000	14,500	14,500	14,500
Exterior Height w/ A/C	12' 8"	12' 9"	12' 10"	12' 10"	12' 10"	12' 10"
Exterior Width	96"	96"	96"	96"	96"	96"
Exterior Length**	34' 0"	35' 7"	37' 10"	39' 11"	40' 2"	40' 1"
Refrigerator (cu. feet)	12	12	12	12	12	12
Water Heater Cap. (gal. G/E w/DSI)	12	12	12	12	12	12
Fresh Water Cap. (gal.) [Including Water Heater Capacity]	67	67	67	67	67	67
Waste Water Cap. (gal.)	53	53	53	53	53	53
Gray Water Cap. (gal.)	93	53	53	53	53	53
1/2 Bath Cap. (gal.)	N/A	N/A	N/A	N/A	N/A	53***
LP Gas Cap. (lbs.)	60	60	60	60	60	60
Furnace BTUs (1,000s)	35	35	35	35	35	35
Tire Size	16"	16"	16"	16"	16"	16"
Awning	20'	16'/11 opt.	18'/11 opt.	18'	17'/11 opt.	16'

*This weight reflects the rolling average unit weight for each model. Your trailer weight will vary according to optional equipment.

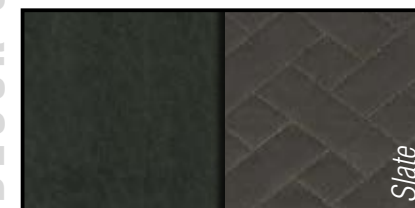
**Exterior length is measured from center of hitch pin to rear wall.

***Also includes kitchen

DÉCOR OPTIONS



Cascade



Slate

DURANGO

EXTERIOR FEATURES



STANDARD FLIP-UP ENTRY STEP

solid footing, coming and going. Handy friction hinge and screenshot auto-door-close feature



CENTRALIZED COMMAND CENTER

well-lit, heated & all systems conveniently located



8-lug, heavy-duty, 16-inch **ALUMINUM WHEELS** with E-range tires (G-range on select models)



5/8" TONGUE & GROOVE PLYWOOD



BACKUP CAMERA PREP



140 CUBIC FOOT BASEMENT STORAGE
featuring motion-light



Standard **4-POINT AUTO-LEVELING** does all the work



POWER AWNING WITH LED LIGHT STRIP
makes evening gatherings magical



INTERIOR FEATURES



THEATER SEATING
with heat, massage, and
LED lighted cupholders



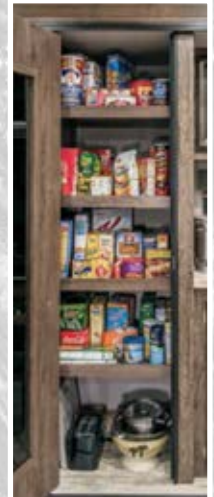
Stainless steel **BATH SINK**
with high-rise faucet

CHEF'S APPLIANCE PACKAGE

- 30" Convection Microwave
- 3-Burner gas range
- Built-in oven



12 CU FT gas/electric
4-DOOR REFRIGERATOR
with temperature controls



KITCHEN STORAGE
including pantry
in most floorplans

KZ DURANGO TOWING PACKAGE

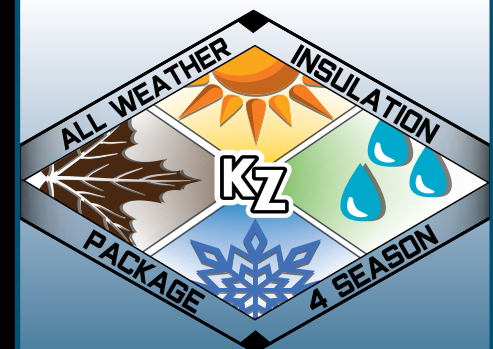
3000 LB TOW RATING
4-PIN WIRE HARNESS CONNECTION
300 LB HITCH RATING
2" TOWING RECEIVER HITCH

SOLAR POWER

Harness the power of the sun to run your TV and outlets. Roof mounted solar prep standard. **Optional "Off the Grid" solar package** includes 170W panel, 1200W inverter and interior control center.

FULLY VENTED ATTIC SYSTEM

Two attic vents are in each RV, providing vital escape routes for unwanted moisture that accumulates during use.



Heated, insulated & enclosed underbelly plus foil in floor, roof, front, rear! R-11 sidewalls, R-38 roof and floor.

DOWNLOAD YOUR FREE

KZ RV APP TODAY!

Owning and operating an RV has never been easier. Everything you need is now in the palm of your hand.



Track RV Maintenance



Keep RV Service Close



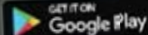
Set Custom Notifications



Reference Checklists for RV Trips



DOWNLOAD
NOW!



VISIT KZ-APP.COM TO LEARN MORE.



True 2-Year Limited Warranty!

KZ's 24-month hitch-to-bumper limited warranty umbrella is the best two-year warranty in the business, covering more than 1,500 operation codes for a full two years and approved for full-time living, thus protecting your investment while you enjoy your RV.

You've found the RV that fits your needs... now you want total confidence in your selection. Because KZ has total confidence in the products we build, we can pass that along to the original purchaser, starting from the date of delivery. Rest easy... you've partnered with the right manufacturer!

KZ Recreational Vehicles... *A History in Progress*

Sam King and Daryl Zook built a truck camper in 1972, with founding principles of quality, fairness, courtesy and integrity. Nearly 50 years later, our 625 employees build your recreational vehicles, on our 100+ acre campus in Shipshewana, IN.

When you communicate with KZ, you'll always be speaking with someone who takes you seriously and treats you with respect. Thank you for considering KZ, and welcome to our world-wide family of satisfied customers!



Portions of this brochure were used with the expressed authority of Dexter Axle, but Dexter Axle is not responsible for the accuracy of the information contained herein.



Dealer:



985 N 900 W • Shipshewana, IN 46565
E-mail kz@kz-rv.com • www.kz-rv.com

Due to continual research and advances, manufacturer reserves the right to change specifications, design, price and equipment without notice, and assumes no responsibility for any error in this literature. Some items shown are not included as standard or optional equipment. ©2019KZ | 01/15/19 | 60M