

 **FLEETWOOD**
Driven to Explore

Expect more.

{Pace Arrow}

PACE ARROW Class A Gas 2005



LIFE IS GOOD AND YOU SHOULD ENJOY
EVERY MOMENT OF IT. TAKE ADVANTAGE OF
WHAT THE ROAD HAS TO OFFER. SEIZE
THE DAY IN STYLE AND VENTURE WHEREVER YOU
LIKE WITH SEAMLESS EASE. WALK TALL,
A LITTLE SHOWING OFF NEVER HURT ANYONE.



Pace Arrow 36B shown in Pewter interior decor with Plantation Cherry wood finish.



Pace Arrow 36B shown in Bronze interior decor with Windsor Birch wood finish.

SETTING THE PACE.

Adventure at your own speed and enjoy the road the way it was meant to be enjoyed...in luxury. The Pace Arrow is the cat's meow of the Class A Gas line, boasting features like raised wood panel cabinetry and Flexsteel® furniture with Ultraleather™ for the utmost in comfort.

You'll enjoy only the finest name brands like top of the line Fabrica® carpeting, and you'll love all the extra perks like stylish window treatments and elegant lighting, creating the ultimate experience in style and luxury. Looking good on the road has never been this easy.



DASH INTEGRATED COMPUTER WORKSTATION is the perfect fit for a laptop, including 12V, 120V and telephone outlets, creating an ideal area to email friends and family.



ENJOY THE 27" FLAT SCREEN TV, 5-disc DVD home theater sound system and Hi-Fi VCR.



PASSENGER SIDE AMENITIES include a pull-out drawer to conveniently store items you'll need on the road, a cup holder for drinks and a magazine rack for reading material.

DINE IN.

Plush amenities, an elegant dining area and a well appointed galley— it is hard to believe all these luxuries are packed into a motor home. That's because Pace Arrow is much more than just a motor home; it is an experience in luxury travel. Pace Arrow's galley will not disappoint

with a Sharp® convection microwave oven, elegant cabinetry with decorative glass inserts, a whole coach water filtration system for fresh water throughout, and stain resistant solid surface countertops. You'll love all the amenities at your fingertips. Bon Appetite.



THE FREESTANDING DINETTE easily seats four for comfortable dining. You'll also love the large window for a wonderful view of your surroundings.



THE DOUBLE STAINLESS STEEL SINK is spacious and great for food preparation, featuring a single lever faucet with sprayer and soap dispenser.



PULL-OUT BASKETS in the pantry, slide in and out for easy loading and unloading.



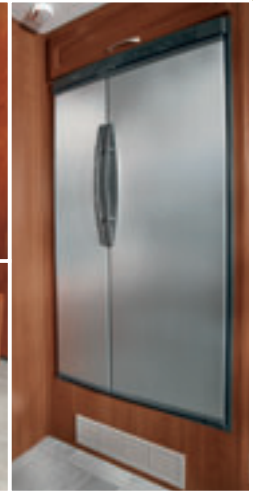
AN IRONING BOARD comes standard and conveniently fits into the cutting board slot (not available on 35G).



A CONVENIENT CUTTING BOARD is perfect for slicing and dicing and easily detaches for cleaning.



DELUXE ROLLER BEARING DRAWER GUIDES on all the hardware throughout are very sturdy, and gives you full access to the drawers for your storage needs.



THE LARGE 12 CU. FT. DOMETIC® REFRIGERATOR features an icemaker and comes with a brushed stainless steel finish for a luxurious look.



Pace Arrow 36B shown in Pewter interior decor with Plantation Cherry wood finish.



*Pace Arrow 36B shown in Pewter interior decor
with Plantation Cherry wood finish.*

COMFORT AWAITS.

Unwind in luxury with features like the queen-size Restonic® deluxe pillow top innerspring mattress, a 20" flat screen TV for your viewing pleasure, and day/night pleated shades for those afternoon naps.

You'll also enjoy the luxuries of beautiful cherry, maple or birch wood cabinetry, and a deluxe fabric headboard, making for an ideal and elegant bedroom on the road.



THE ELEGANT GLASS ENCLOSED SHOWER WITH SKYLIGHT features a top of the line deluxe adjustable showerhead, a dispenser for bodywash, shampoo and conditioner and a convenient towel rack.



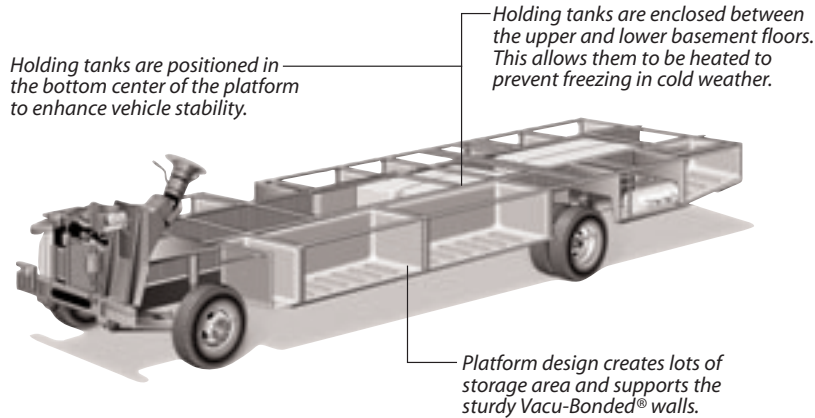
THE BEDROOM WARDROBE with mirrored doors gives you plenty of room to hang garments, storage space for shoes, drawers with full extension drawer guides, and is lined with cedar to keep your clothes smelling fresh.



CONVENIENT UNDER-THE-BED STORAGE provides plenty of room to store extra bedding, clothing or extras that you might need during your travels.

POWER PLATFORM CONSTRUCTION

Fleetwood's patented Power Platform begins with two 10-in. steel I-beams welded lengthwise to the chassis. From the beams, steel outriggers extend outward. Together, they create a basement for fluid tanks and storage while supporting the floor, walls and roof with a rigid metal frame. This complements the chassis to make it even stronger.



*Drawings are for illustrative purpose only to highlight aspects of motor home construction. Actual motor home design depends on model and is subject to change.

A 2 Stage Dupont® Paint Process (full paint optional) is carefully applied to increase durability and give the exterior a sleek look and beautiful shine. This process ensures only the best in quality and appearance.

Tuff-Ply Roof is UV resistant, durable, easy to clean, and doesn't scratch like many competitors' fiberglass or aluminum roofs.

Tuff-Coat® Exterior Fiberglass Sidewalls are Vacu-bonded® into a strong composite structure, as opposed to competitors' thin fiberglass laminate.

Storage Compartments are lighted and include single paddle latches, gas-lift supports, stainless steel hinges and insulated aluminum doors.

Power Entry Steps retract when the door is closed and lower as the door opens.

Stylish Fiberglass Front Cap will be sure to turn heads while you're out on the road.



THE UTILITY COMPARTMENT provides a central place to empty your holding tanks and includes a water sprayer for quick clean up. For your convenience the compartment is lighted and all components are clearly marked.



THE REAR VISION CAMERA features one-way audio and a live video feed to the driver's area to aid the driver when backing up.



THE DRIVER'S AREA features Flexsteel® Ultraleather™ captain's chairs with power back/slide controls, cup holders, tilt steering, dash fans and double swivel sun visors with map pockets.



THE DRIVER'S DOOR has convenient steps for entering and exiting your coach with ease.



EZ STORE® COMPARTMENTS allow for storage of oversized or bulky items and conveniently move with the slide-out for easy access to your gear.



THE TEMPERATURE GAUGE AND COMPASS are great tools to help you navigate on your journey. **DISTINCTIVE TAILLIGHTS** are visible even when towing most types of vehicles.

FOUR INTERIORS, THREE WOOD FINISHES, THE CHOICE IS YOURS.

Choose from one of four deluxe interior decor motifs with color coordinated exterior graphics, 12 combinations in all.



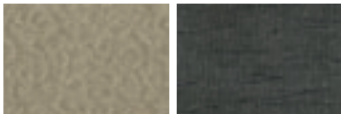
SAND

Living/Dining Room



Ultraleather™ Sofa Bed & Recliner *Dinette Cushions* *Throw Pillow*

Bedroom



Bedsread *Headboard*

SLATE

Living/Dining Room



Ultraleather™ Sofa Bed & Recliner *Dinette Cushions & Throw Pillow*

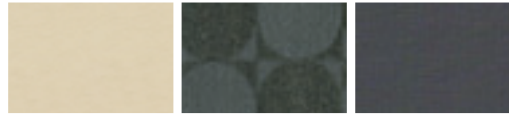
Bedroom



Bedsread *Headboard*

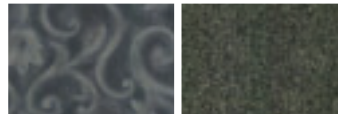
PEWTER

Living/Dining Room



Ultraleather™ Sofa Bed & Recliner *Dinette Cushions* *Throw Pillow*

Bedroom



Bedsread *Headboard*

BRONZE

Living/Dining Room



Ultraleather™ Sofa Bed & Recliner *Dinette Cushions & Throw Pillow*

Bedroom



Bedsread *Headboard*

INTERIOR WOOD FINISHES



Plantation Cherry *Fairfield Maple* *Windsor Birch*

CHOOSE FROM SIX FULL PAINT OPTIONS TO CUSTOMIZE YOUR PACE ARROW.

Mix and match a full paint option with any interior combination to customize your Pace Arrow.



Warm Shadow



Estate Green



Harvest Beige



Platinum



Shalestone



White Pearl

Pace Arrow

What Drives You?

Maybe it's feeling like you're the only one on Earth. Perhaps it's the unique sense of closeness with the great outdoors. Or, it might be the joy that comes from spending quality time with family and friends. Whatever the reason, we know that you have a strong drive to experience everything that comes with spending time on the road. And for more than 50 years, we've shared that passion with you. Because we're RV enthusiasts ourselves, you can see our passion in the vehicles we design and build. Own a Fleetwood, and you'll feel like you're not just traveling, but embarking on an experience unlike any other. Set your own course for adventure and get out there and explore the world around you. Once you do, you'll see what it is that drives us — it's you.

RV OWNERCARE* is a limited one-year/15,000-mile and three-year/50,000-mile structural warranty and it is fully transferable for the first 12 months. RV OWNERCARE is one of the RV industry's most comprehensive programs and includes systems, appliances, components and construction, with no deductible and no service charge. RV OWNERCARE coverage is provided from a company that will be around in the future to service your needs. See your nearest Fleetwood dealer for a full explanation of benefits and restrictions.

CLUB FLEETWOOD As a Fleetwood owner, you're eligible to become a member of our owners' group, Club Fleetwood. It's a perfect way to meet other Fleetwood owners who love to travel to beautiful resorts and vacation spots all across America. Call (877) 577-2560 and join the fun! Or visit www.fleetwood.com/clubs to learn more.

FLEETWOODRV.COM To locate a dealer near you, visit our website or call 1-800-444-4905. We can also be contacted at Fleetwood Customer Relations, P.O. Box 7638, Riverside, CA 92513-7638.

IMPORTANT—PLEASE READ Product information, photography and illustrations included in this publication were as accurate as possible at the time of printing. For further product information and changes, please visit our website at www.fleetwoodrv.com or contact your local Fleetwood dealer. Prices, materials, design and specifications are subject to change without notice. All weights, fuel, liquid capacities and dimensions are approximate. Fleetwood has designed its recreational vehicles to provide a variety of uses for customers. Each vehicle features optimal seating, sleeping, storage and fluid capacities. The user is responsible for selecting the proper combination of loads (i.e. occupants, equipment, fluids, cargo, etc.) to ensure that the vehicle's capacities are not exceeded.

Your local Fleetwood dealer is:



www.fleetwoodrv.com

*For complete info see your Fleetwood dealer. © 2004. Fleetwood Enterprises, Inc.
Printed in the USA. Inventory control number PA05B1 8/04.

treadlightly!
LEAVING A GOOD IMPRESSION

