

The Standard for Excellence

PHOENIX *Cruiser*

#1 CHOICE in Downsizing!

*Join the Phoenix Cruiser Family
Adventure Anywhere.*



574.266.2020

www.phoenixcruiser.com

Phoenix USA, Inc - Factory Direct to You from Elkhart, IN

INTERIOR FEATURES



- 4 COLOR CHOICES
- MAPLE OR CHERRY CABINETS
- RAISED CABINET DOORS
- SPACIOUS WARDROBE CLOSET
- PADDED FLOORING THROUGHOUT
- DAY/NIGHT SHADES
- DECORATIVE VALANCES
- MOUNTED COFFEE POT
- SOLID WOOD TABLES
- SOLID WOOD COUNTERTOP EXTENSIONS
- BALL-BEARING DRAWER GLIDES
- OVERSIZED SOLID SURFACE GALLEY SINK
- SOLID SURFACE COUNTERTOPS
- EASILY CUSTOMIZED WITH OPTIONS

Cruisers are built to the **highest quality standard**, and are **beautiful inside and out**. Not only are our units **easy to drive**, but they also give **great fuel economy** even when towing! Phoenix Cruisers have long been the **best value for the dollar** of any vehicle in their class. Now, with **Factory-Direct sales** to the public, we will **take your trade**, and put you in the RV of your dreams today! There has never been quality like this available at these rates!

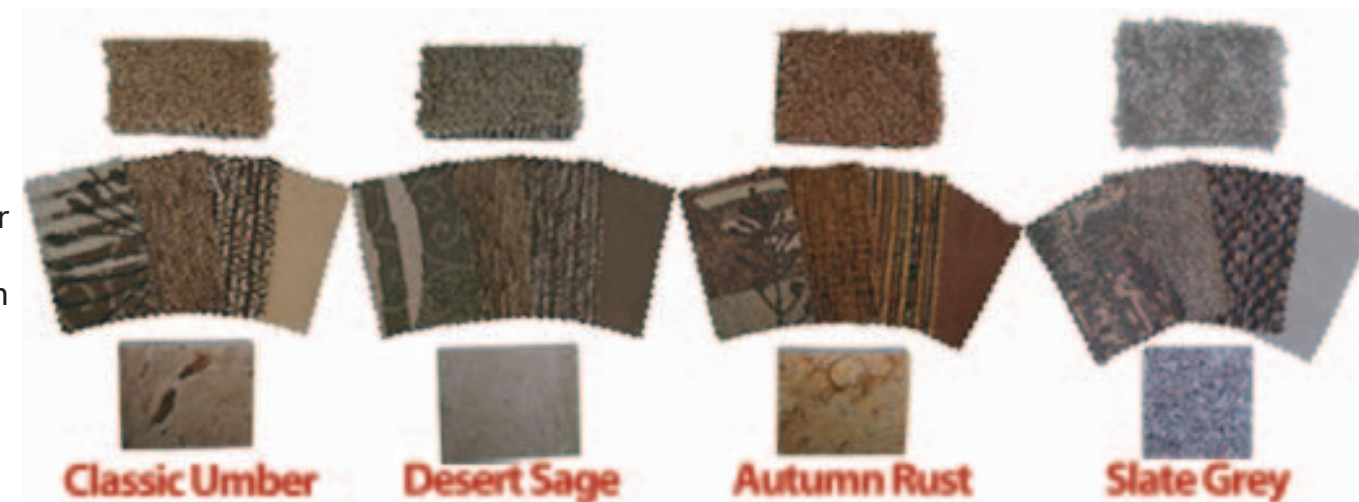
At Phoenix USA we take a lot of pride in setting a **standard of excellence** for compact motorhomes. We go the extra mile in providing **standard equipment** not found on competitive units. We pay attention to the **smallest details** as we craft each unit. This creates a **superior product** that gives one of the **highest customer satisfaction ratings** in the industry.

4 COLOR THEMES AVAILABLE

Carpet

Sofa
Captain's Chair
Barrel Chair
Leather Option

Corian
Countertops



Phoenix USA, Inc - Factory Direct to You from Elkhart, IN

EXTERIOR FEATURES



See why we're the
**#1 Choice in
Downsizing!**

*Make a statement
wherever you go*

FULL BODY PAINT OPTIONS



Classic Umber



Autumn Rust



Slate Grey



Sage Green



LOWER BODY PAINT OPTIONS



Classic Umber



Autumn Rust



Slate Grey



Sage Green

- 12 OPTIONAL PAINT SELECTIONS
- BODY CONTOURED ENTRY W/ DEADBOLT
- DUAL TIRE INFLATORS
- FRONT CHROME BUMPER & GRILLE
- SPARE TIRE & RIM W/ LOCKING COVER
- ROOF RACK & LADDER
- SLIDE-OUT STORAGE (N/A 2100, 2400)
- ONE-PIECE FIBERGLASS ROOF
- PREMIUM GRAPHICS PACKAGE
- HIDE-AWAY RETRACTABLE SCREEN
- WEATHER-SHIELDED FIBERGLASS RUNNING
BOARDS
- FRAMELESS AWNING-TYPE CRANK-OUT
WINDOWS



Shown: The Phoenix cab area has taken every step to maximize your experience while traveling and camping.

- FACTORY INSTALLED A/C**
- FACTORY INSTALLED AM/FM/CD STEREO**
- DRIVER & PASSENGER FRONT AIR BAGS**
- CRUISE CONTROL**
- POWER STEERING**
- POWER WINDOWS & LOCKS**
- TILT STEERING WHEEL**
- PLEATED WINDSHIELD PRIVACY WRAP**
- HIDDEN DRIVER & PASSENGER RUNNING BOARDS**
- SWIVEL FRONT PASSENGER SEAT**
(OPTIONAL ON 21', 23', AND 24' MODELS)

A lot of thought has gone into designing the Cruiser cab area, and you'll notice it right away. From the hidden driver's and passenger's running boards to the optional 6-way power driver's seat, the comforts of the cab area are designed to make driving and riding a relaxing experience for everyone. Whether you are a seasoned RV owner, or have never been in the driver's seat at all, we think you'll find that our cab area is designed to allow you to enjoy the 'getting there'.

Once you park, the cab area keeps working for you, with the optional swivel passenger seat as part of the living area--another way that we maximize every inch of space inside the Cruiser! These are just some of the things that make Phoenix Cruiser the #1 choice in downsizing for so many people. Call or come in to see us, and you'll be eager to adventure anywhere in your new Cruiser.



RV Sani-Con Holding Tank Management System

Introduced in 2006 as standard on all Phoenix Cruisers, the RV Sani-Con System has been a huge success, and is clearly the most modern, sanitary, and convenient method for dumping the tanks. The transfer-grinder pump is called a macerator pump. It allows the liquids and solids in the holding tanks to be emptied by 12-volt DC power instead of gravity. As opposed to

See why we set the standard for excellence!

emptying the tanks downhill only, the RV Sani-Con System can lift the liquid stream as much as 200+ feet up into any legal receptacle. The pump has the capacity to discharge the tanks through a 3/4" water hose, if necessary. The Sani-Con name is derived from the sanitary and convenient benefits of the design. Don't worry. Regular 3" dump hook-up also included with electric.

Inverter System

Phoenix installs an 1,800-watt inverter in each vehicle. Instead of a converter, which converts 110-volt AC to 12-volt DC, the inverter converts 12-volt DC to 110-volt AC. The advantage of an inverter is that the majority of your 110-volt AC receptacles are live using only your coach batteries. There's no need to run the generator or to be plugged into a power source to have 110-volt AC service in the vehicle.

Dual Auxiliary Batteries

Phoenix Cruisers come with two deep cycle marine batteries on a slide out tray for the occasional dry camping!!!

Electric Dump Valves

Our electric dump valves are designed to get you away from the dumping station, and on to the next part of your trip as quickly as possible.



Our frameless awning-type crank-out windows have the sleek look expected in the 21st century. No more worries about open windows letting in rain or unwanted guests! Our RV's are designed to give you peace of mind while camping, and to give you as much time as possible to just enjoy your trip. This is just another reason why we have one of the highest customer satisfaction ratings in the industry.

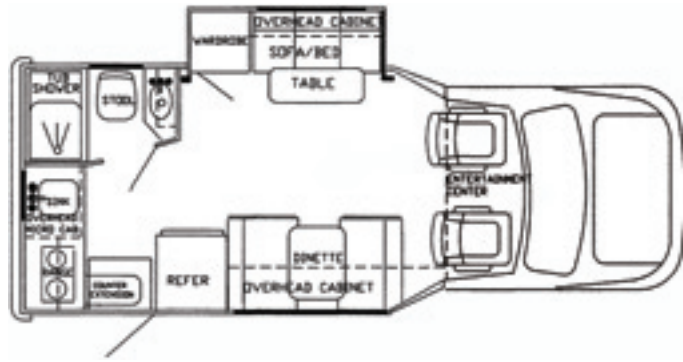


Shown: 1800-watt inverter (top), 2 auxiliary batteries with slide-out tray (above), electric dump valves (below left) hands-free macerator pump (below right)

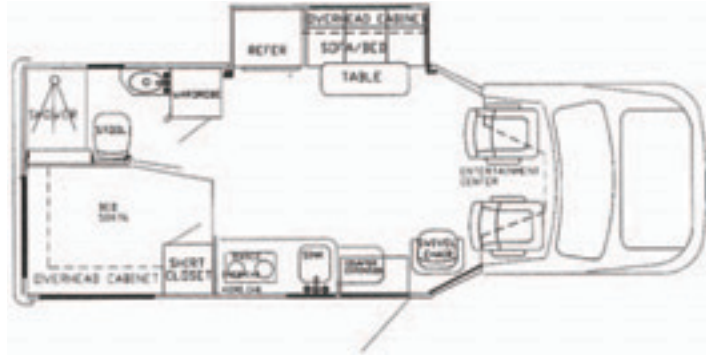


- BLACK/GREY WATER FLUSH SYSTEM
- SYSTEM MONITOR PANEL
- HEATED HOLDING TANKS
- CITY WATER HOOK-UP
- 30AMP 25FT DETACHABLE POWER CORD
- 1800-WATT INVERTER/CHARGER
- 110V GFI EXTERIOR OUTLETS
- 2 AUX. BATTERIES W/ SLIDE-OUT TRAY
- CABLE TV HOOK-UP
- PREP FOR GENERATOR
- PREP FOR ROOF AIR
- ELECTRIC DUMP VALVES
- SEWAGE MACERATOR PUMP FOR BLACK/GREY WATER HOLDING TANKS

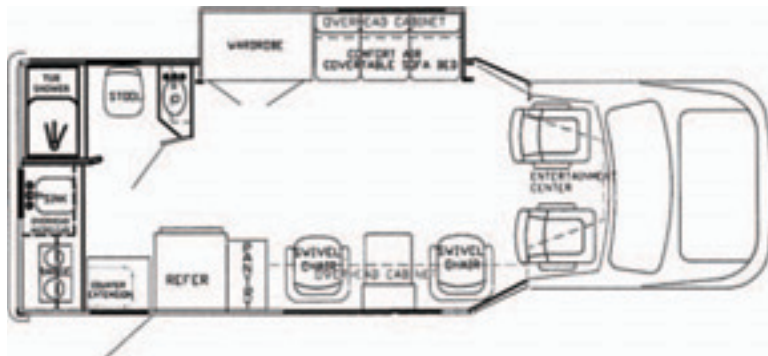




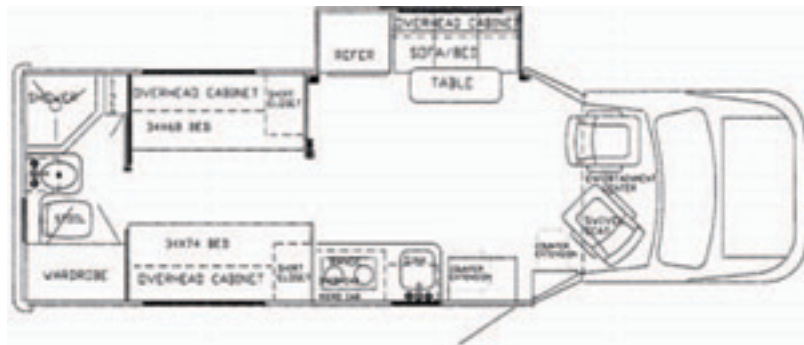
Model 2100
 Built on the E-350 chassis, this unit is 21' long. With a rear kitchen, and convertible sofa bed, this model offers everything you need to get on the road, in as compact a package as possible.



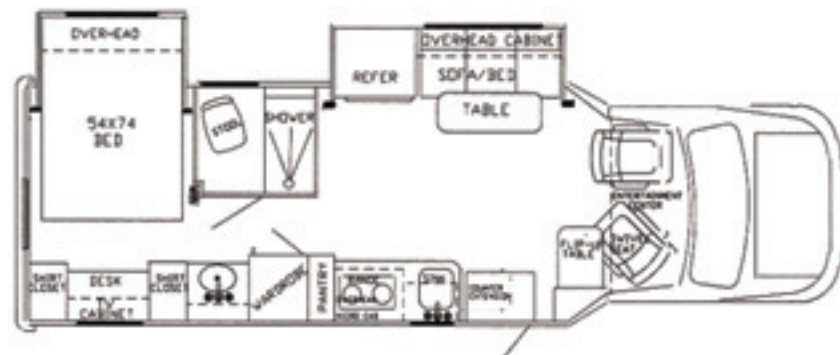
Model 2350
 Built on either the Ford E-350, or the Mercedes Sprinter chassis, this unit is 23'8" long. With a rear bed and a convertible dining/sofa/bed area, this unit maximizes all available space.



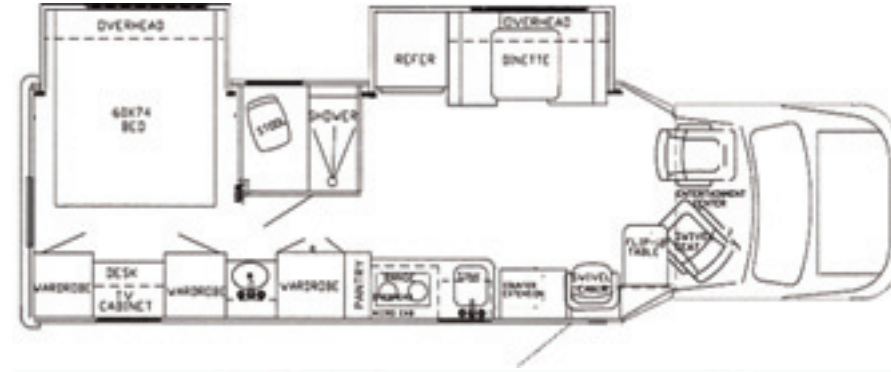
Model 2400
 Built on either the Ford E-350, or the Mercedes Sprinter chassis, this unit is 24' long. With the kitchen in the rear, the sofa bed and two swivel chairs provide for roomy, comfortable living space.



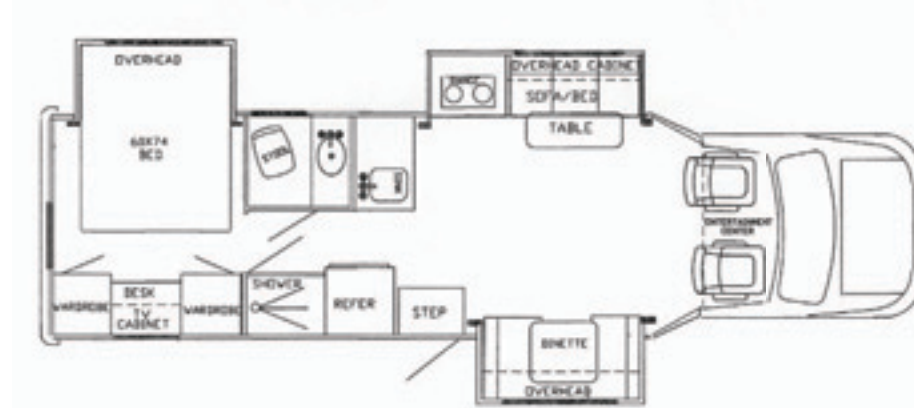
Model 2551
 Built on the E-450, this unit is 26'5" long. Rear twin beds, a convertible sofa bed, and plenty of closet space make this our most popular model.



Model 2700
 Built on the E-450 chassis, this unit is 27' long. With the double slide option, the 2700 has a surprising amount of living and work space.

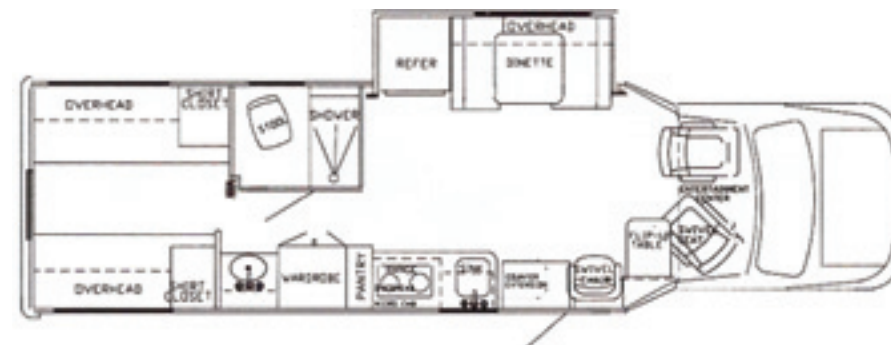


Model 2900
 Built on the E-450 chassis, this unit is 29'8" long. With the double slide option, this model has a walk-around queen bed, loads of closet and pantry space, a rear desk and TV cabinet that give you everything you need on the road.

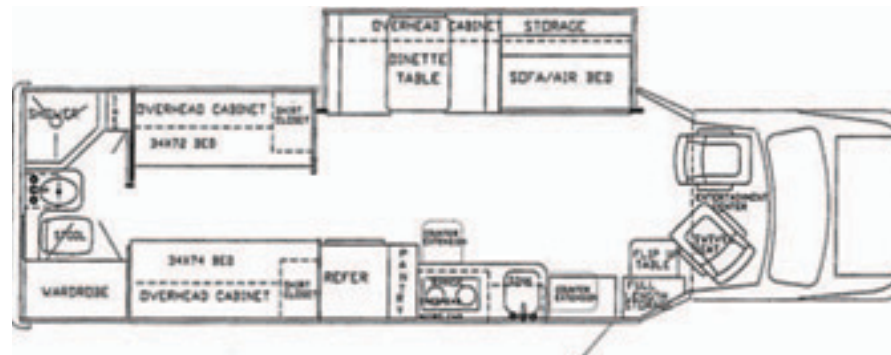


Model 2910
 Built on the E-450 chassis, this unit is 30'6" long. With triple slide-outs, a walk-around queen bed, and abundant storage, this model will truly be your home on the road.

Now available in 9 models and 2 chassis. The Phoenix Cruiser truly has something for everyone. Visit our website to see detailed photos of standard and custom builds of each model. All units shown with optional slide-out.



Model 2950
 Built on the E-450 chassis, this unit is 29'8" long. With rear twin beds, this model provides a tremendous amount of living/floor space to accommodate your every need while traveling.



Model 3100
 Built on the E-450, this 30'6" long unit is our longest model. Rear twin beds, a convertible sofa bed, separate dinette, and plenty of closet space give this model all the comforts of home.

Chassis Specifications	Ford									Sprinter	
	2100	2350	2400	2551	2700	2900	2910	2950	3100	2350	2400
Chassis	E-350	E-350	E-350	E-450	E-450	E-450	E-450	E-450	E-450	3500	3500
Engine	6.8, V-10	6.8, V-10	6.8, V-10	6.8, V-10	6.8, V-10	6.8, V-10	6.8, V-10	6.8, V-10	6.8, V-10	3.0, V-6 Turbo Diesel	3.0, V-6 Turbo Diesel
Axle Ratio	4.1	4.1	4.1	4.56	4.56	4.56	4.56	4.56	4.56	3.92	3.92
Wheel Base	138"	158"	164"	194"	192"	208"	218"	208"	218"	170"	170"
5-Speed Automatic	✓	✓	✓	✓	✓	✓	✓	✓	✓	✓	✓
GVWR (lbs)	12500	12500	12500	14500	14500	14500	14500	14500	14500	11,030	11,030
GAWR Front (lbs)	4600	4600	4600	4600	4600	4600	4600	4600	4600	4,410	4,410
GAWR Rear (lbs)	8500	8500	8500	9500	9500	9500	9500	9500	9500	7,720	7,720
GCWR (lbs)	20000	20000	20000	20450	20450	20450	20450	20450	20450	15,250	15,250
Dual Wheels	✓	✓	✓	✓	✓	✓	✓	✓	✓	✓	✓
Tires	LT225/75R16									LT225/75R16	
4-Wheel ABS Brakes	✓	✓	✓	✓	✓	✓	✓	✓	✓	✓	✓
Exterior Length w/o Ladder	21' 2"	23' 8"	24' 1"	26' 5"	27' 1"	29' 8"	30' 6"	29' 8"	30' 6"	24' 6"	24' 6"
Exterior Height w/ AC	9' 10"	9' 10"	9' 10"	10' 1"	10' 1"	10' 1"	10' 1"	10' 1"	10' 1"	10' 1"	10' 1"
Exterior Width	93"	93"	93"	93"	93"	93"	93"	93"	93"	93"	93"
Interior Height	6' 4"	6' 4"	6' 4"	6' 4"	6' 4"	6' 4"	6' 4"	6' 4"	6' 4"	6' 4"	6' 4"
Fuel Capacity (gal)	55	55	55	55	55	55	55	55	55	25	25
Fresh Water Cap (gal)	31	38	31	45	46	46	46	46	46	38	38
Waste Water Cap (gal)	23	35	23	35	23	23	23	23	23	35	35
Gray Water Cap (gal)	35	23	35	23	35	35	35	35	50	23	23
L.P. Gas Tank (lbs)	42	42	42	42	42	42	42	42	42	42	42
Chassis Warranty	36,000 miles/ 3 years									36,000 miles/ 3 years	
Powertrain Warranty	60,000 miles/ 5 years									100,000 miles/ 5 yr	

Due to Phoenix USA's continuing product improvement program, actual weights, length, and specifications are subject to change without notice or obligation. Photographs may show optional equipment that is not included in the price of the unit.

574.266.2020

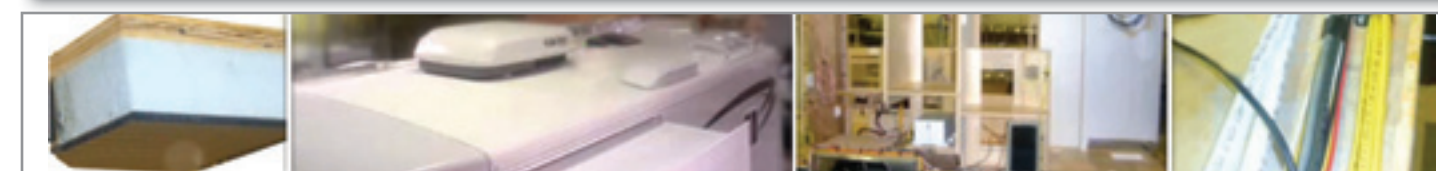


LARGE DOUBLE DOOR REFRIGERATOR
RECESSED 2-BURNER RANGE
30,000 BTU FURNACE
6-GALLON GAS WATER HEATER W/ ELECTRONIC IGNITION

TAKE OUR VIRTUAL CONSTRUCTION TOUR ONLINE!

CONSTRUCTION FEATURES

AERODYNAMIC BODY STYLING W/ CURVED WALLS
SMOOTH VACU-BOND LAMINATED GEL-COAT FIBERGLASS EXTERIOR
2-1/8" THICK FLOOR, TUBULAR STEEL CONSTRUCTION
STRONG, LONG-LASTING 1/4" PLASTIC FLUTED SHEET UNDERBELLY
MOISTURE-PROOF PLYWOOD AS FLOORING SUB-BASE
1-1/2" THICK WALL, ALUMINUM CAGE CONSTRUCTION
METAL FRAMING AROUND ALL OPENINGS (WINDOWS, DOORS, ETC)
BLOCK FOAM INSULATION IN ROOF, FLOORS & SIDEWALLS
CONTINUOUS WIRING PREVENTS WIRING PROBLEMS BY ELMINATING WIRING HARNESES
RUBBER PUCKS BETWEEN FLOOR & FRAME FOR SMOOTHER RIDE & REDUCED ROAD NOISE



www.phoenixcruiser.com



We know that every camper is unique. We are committed to meeting those individual needs with many optional features available. Customize your Cruiser to fit your camping lifestyle preferences.

Talk to your Phoenix Cruiser representative about your needs, and you'll be amazed at how affordably we can build a custom unit just for you!



Shown: Cherry option (top left), hydraulic leveling jacks (top right), back-up monitor (center), slide-out with electric sofa and cherry option (above).

- PREMIUM CONVENIENCE PACKAGE
- 4KW ONAN GENERATOR
- CHERRY CABINETRY
- 26" LCD TV (FRONT)
- 15" LCD TV (BEDROOM)
- MIRROR W/ COMPASS & OUTSIDE TEMP
- DOUBLE SOFA FLOORPLAN
- LEVELING JACKS
- BACK-UP MONITOR
- INSULATED GLASS
- 6-WAY POWER SEATS
- FANTASTIC VENT
- SLIDE-OUT W/ ELECTRIC SOFA
- SURROUND SOUND W/ DVD PLAYER
- LEATHER SEATING
- ELECTRIC-TYPE AWNING
- LOWER OR FULL BODY PAINT W/
DIAMOND SHIELD PROTECTION
- PASSENGER SWIVEL SEAT
- (STANDARD ON 25', 27', AND 29' MODELS)
- MANY OTHER OPTIONS AVAILABLE!**

The Standard for Excellence

PhoenixCruiser

*Our attention to detail provides
superior quality.*

*Our Factory-Direct sales provide
affordability.*



*We are happy to **take your trade**
and put you in the RV of your
dreams today!*

Adventure Anywhere

PHOENIX
Cruiser

Now Factory Direct!

574.266.2020

www.phoenixcruiser.com